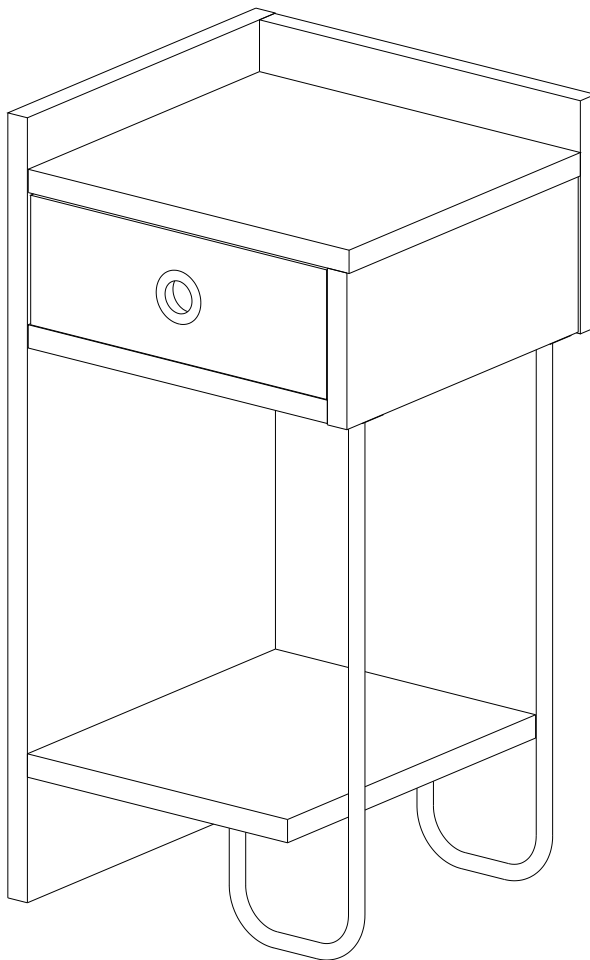


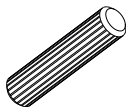
GP037-0164,1



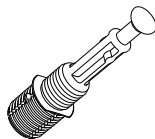
ATTENTION !!

Minifix is the main connection material used in our products.
Before starting assembly, please check the drawings below.

A04



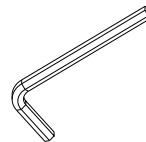
A23



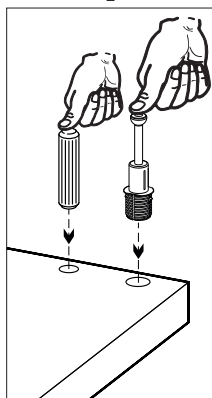
A22



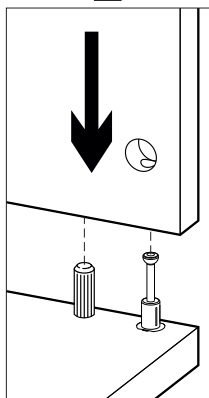
A12



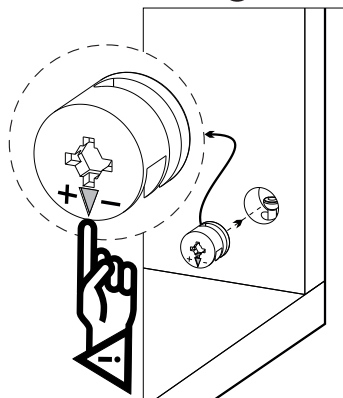
1



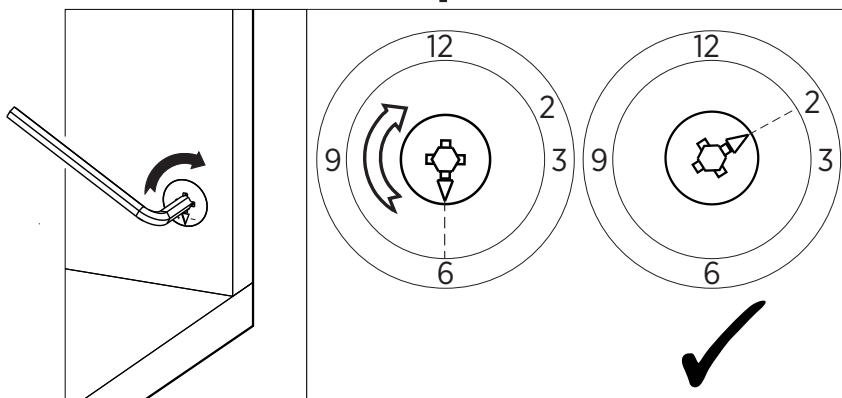
2



3

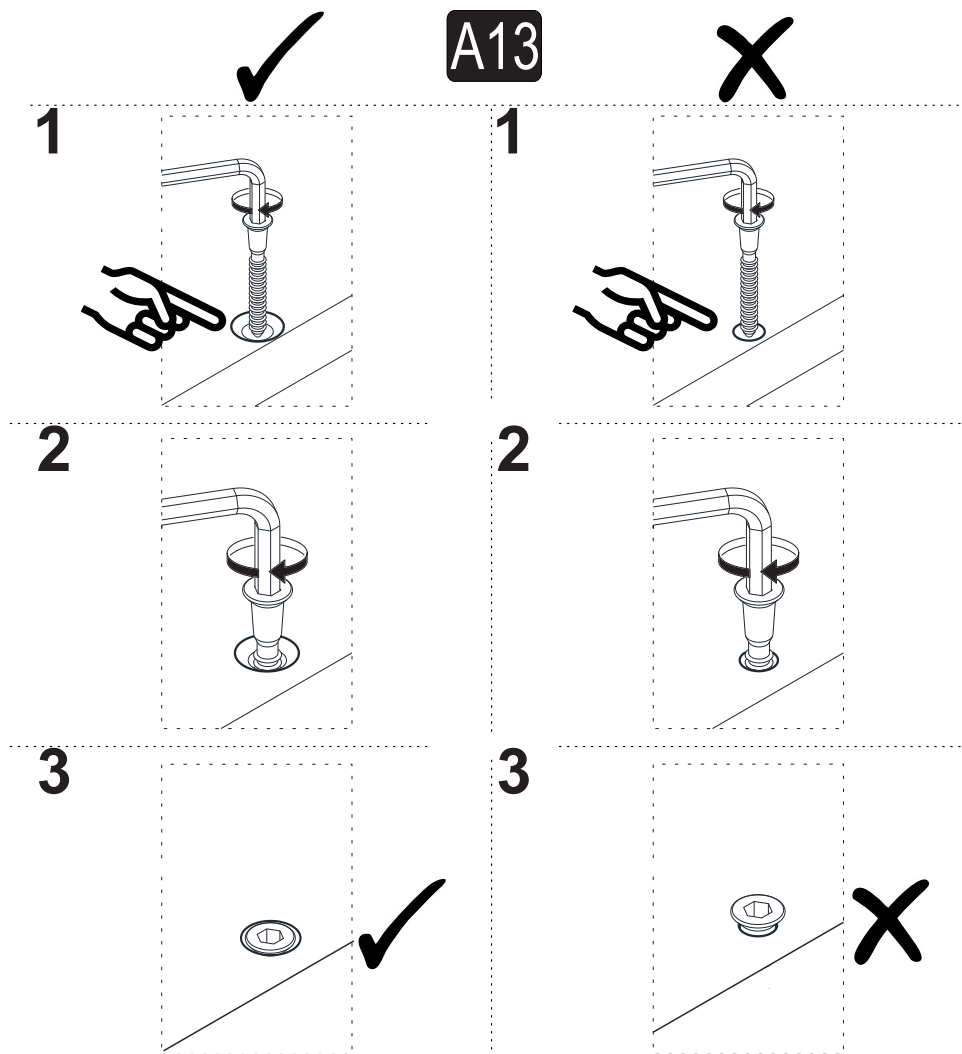


4



ATTENTION !!









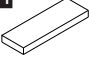

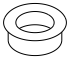

Our products are screw system. Before you proceed with installation try to understand the following

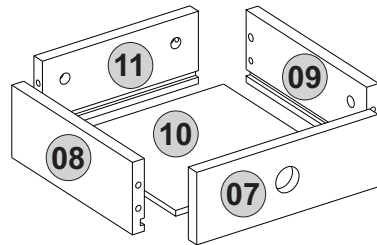
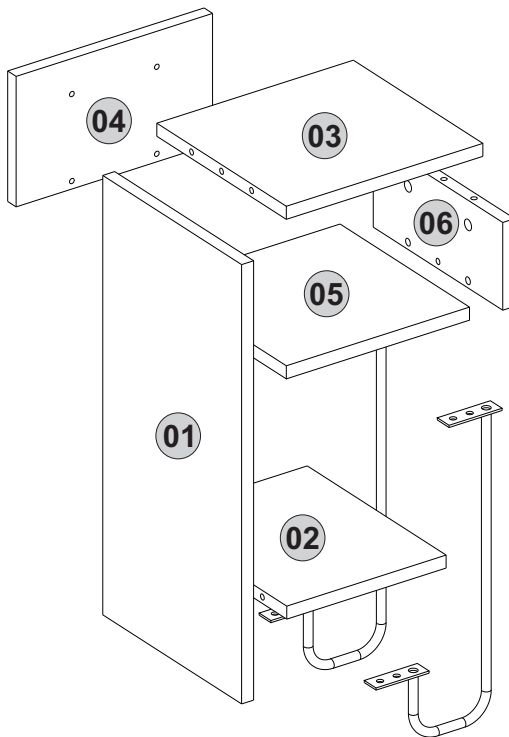


Follow the installation steps in the order as shown.
Position the parts as shown in the installation guide steps.

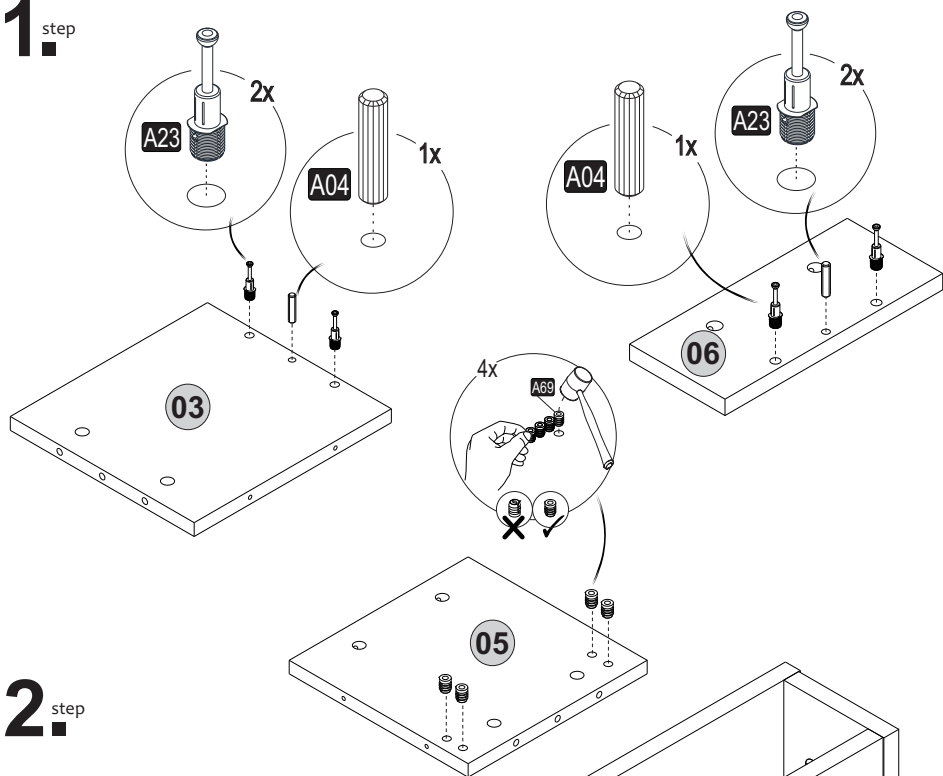


ACCESSORY LIST

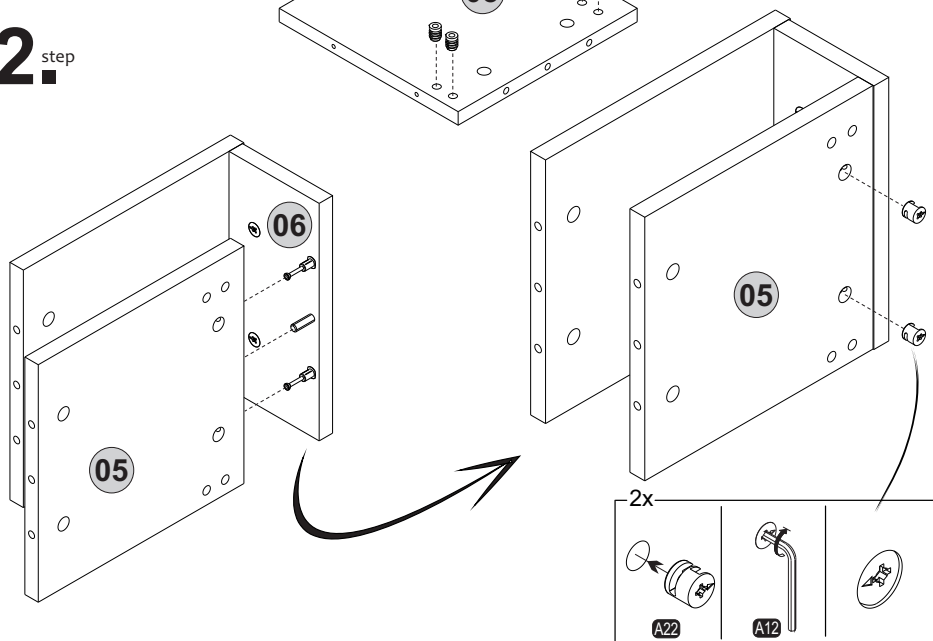
A04  Ø8 9x	A06  18mm C1-18x P.D.	A12  Allen 1x	A13  50mm 4x Kece	A22  Minifix k18 14x
A23  Minifix M10 14x	A69  8x	B15  15 (black)mm 8x	PB01  2x	Z24  Ma Ayoo4 2x
Z37  35mm pygk (Black) 1x	Z54  Pp1501 2x			



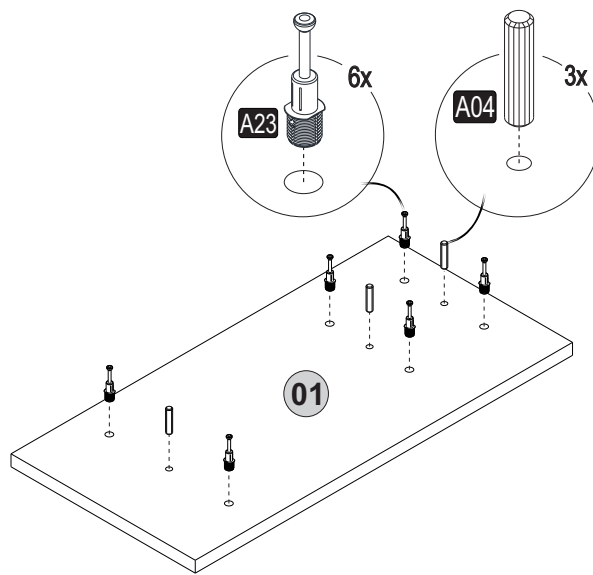
1. step



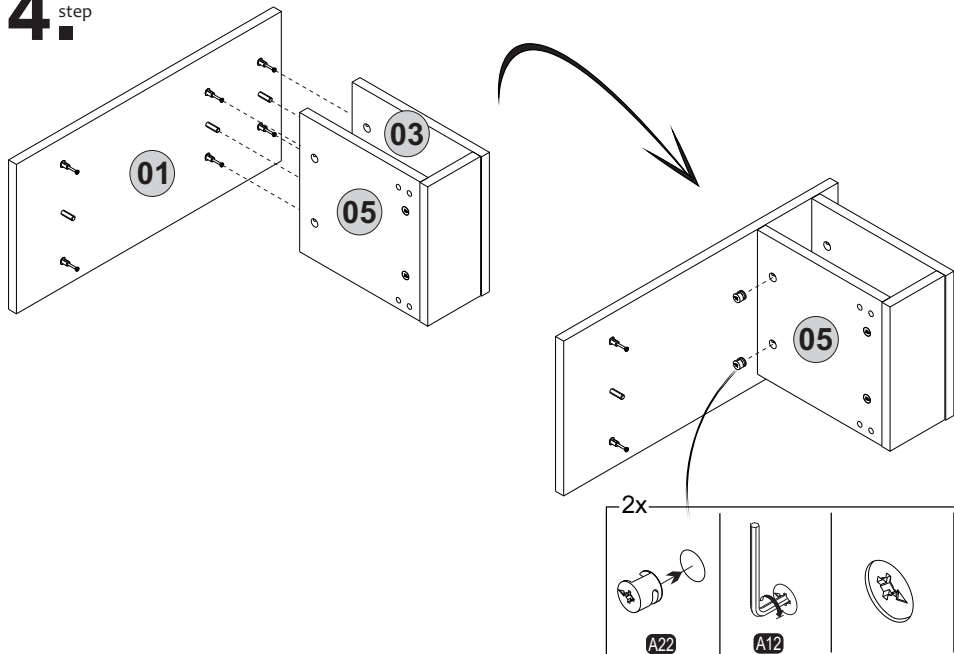
2. step



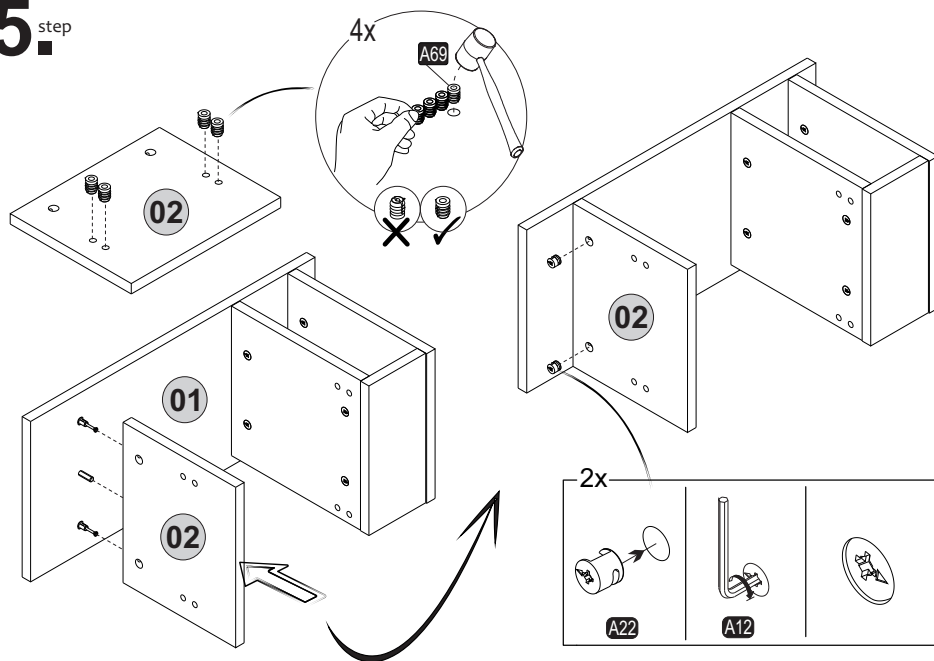
3.^{step}



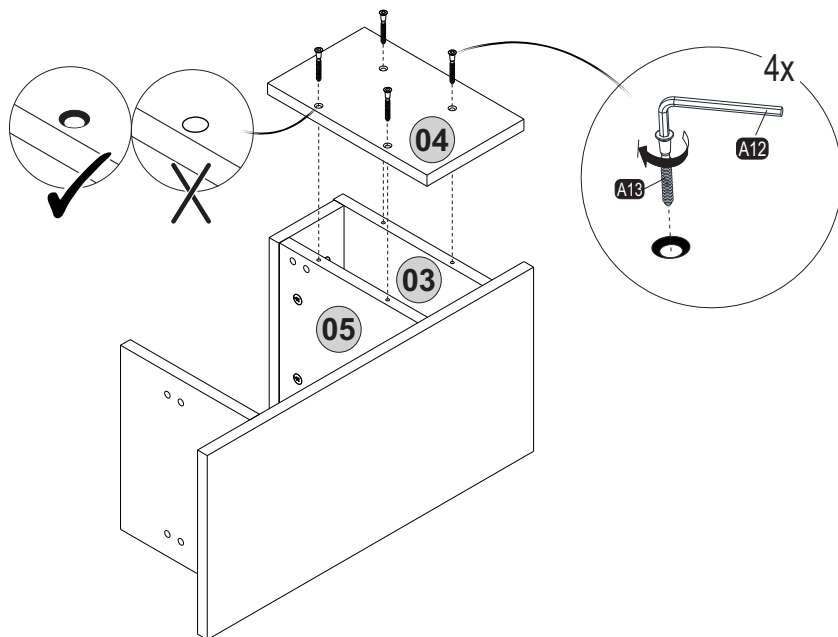
4.^{step}



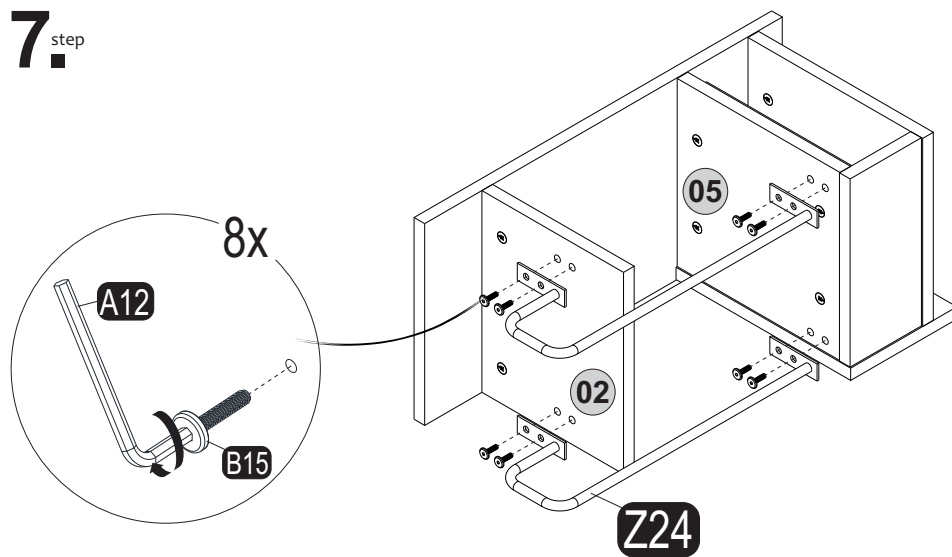
5.^{step}



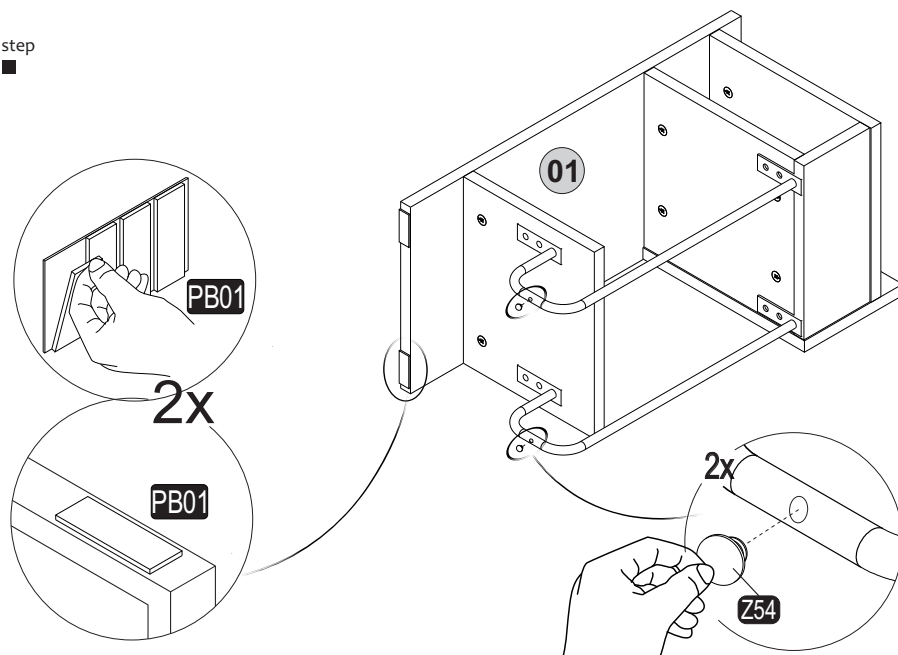
6.^{step}



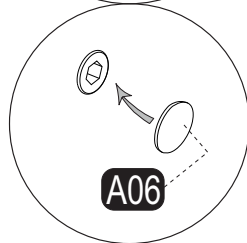
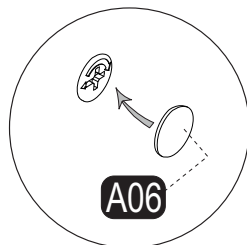
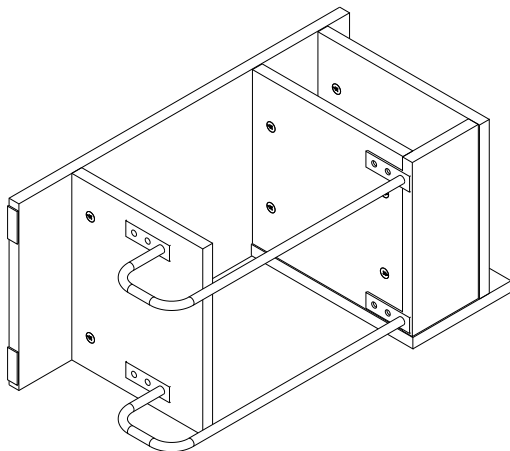
7. step



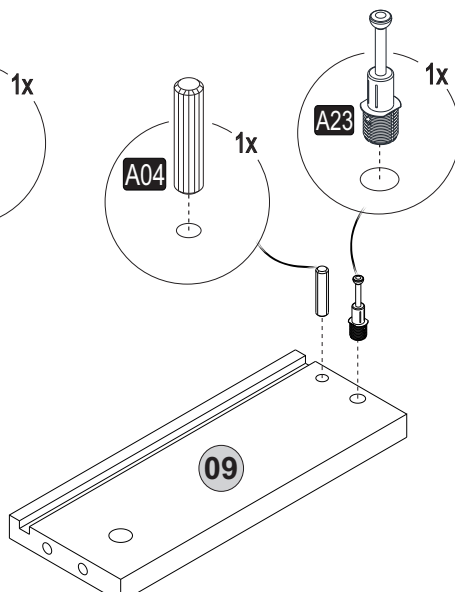
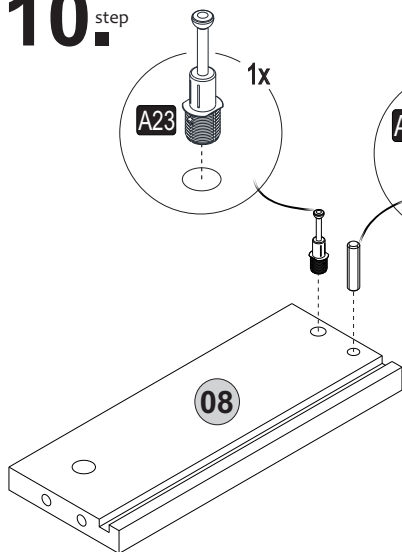
8. step



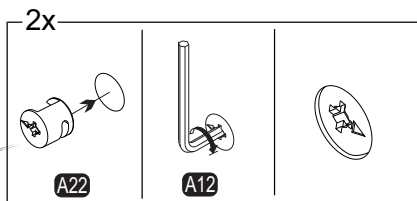
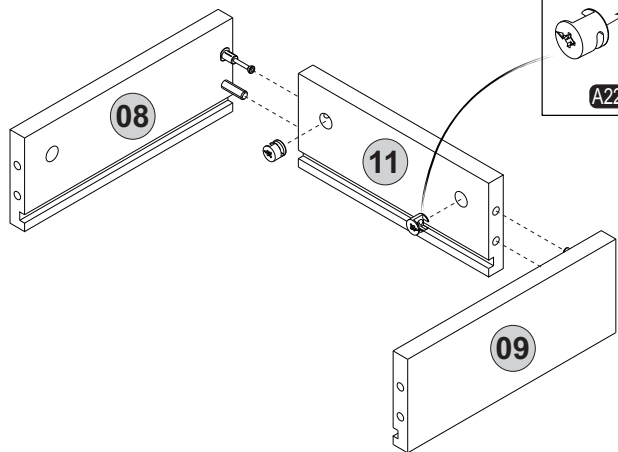
9._{step}



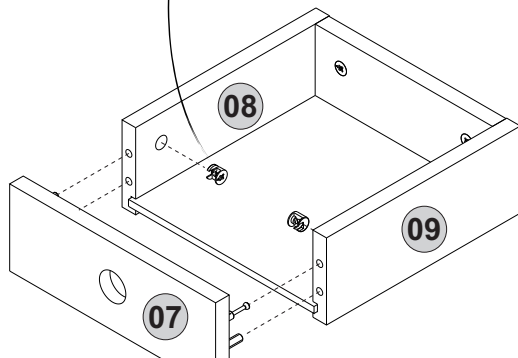
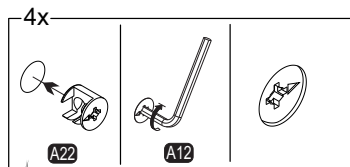
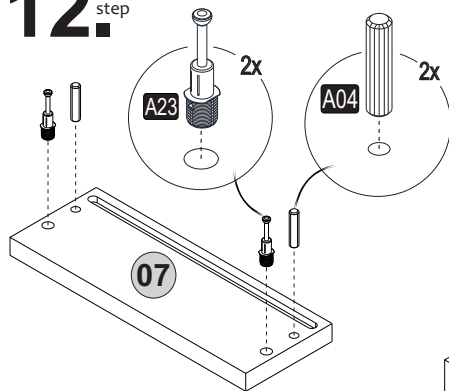
10._{step}



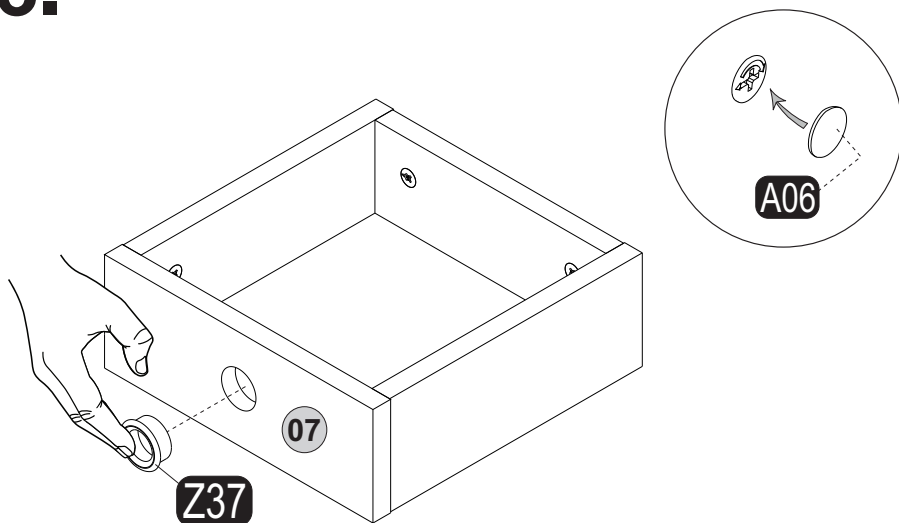
11.step



12.step



13._{step}



14._{step}

