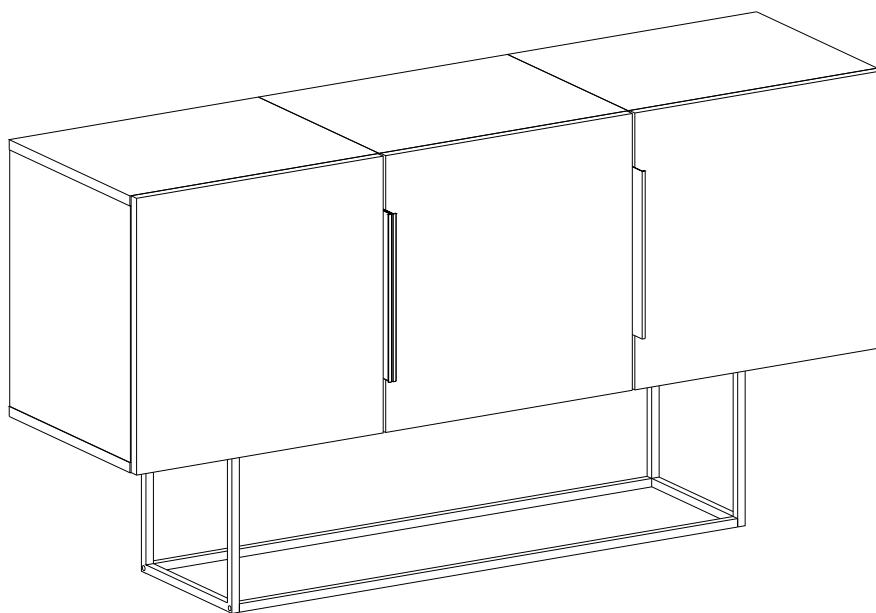


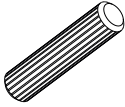
GP037-0176,1



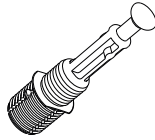
ATTENTION !!

Minifix is the main connection material used in our products.
Before starting assembly, please check the drawings below.

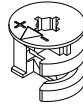
A04



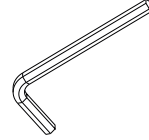
A23



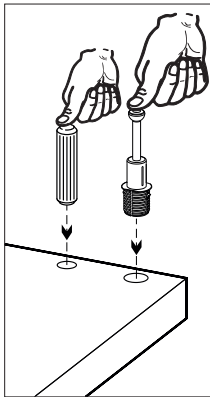
A22



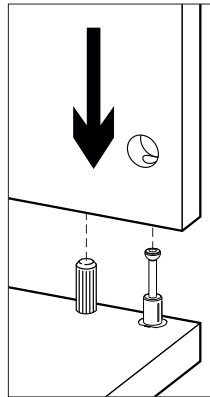
A12



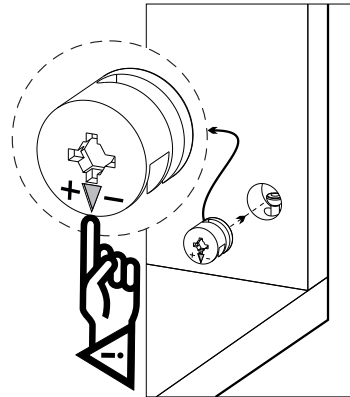
1



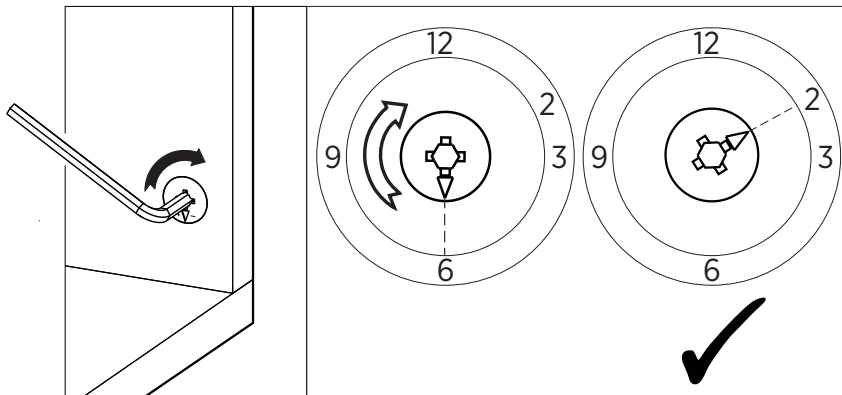
2



3

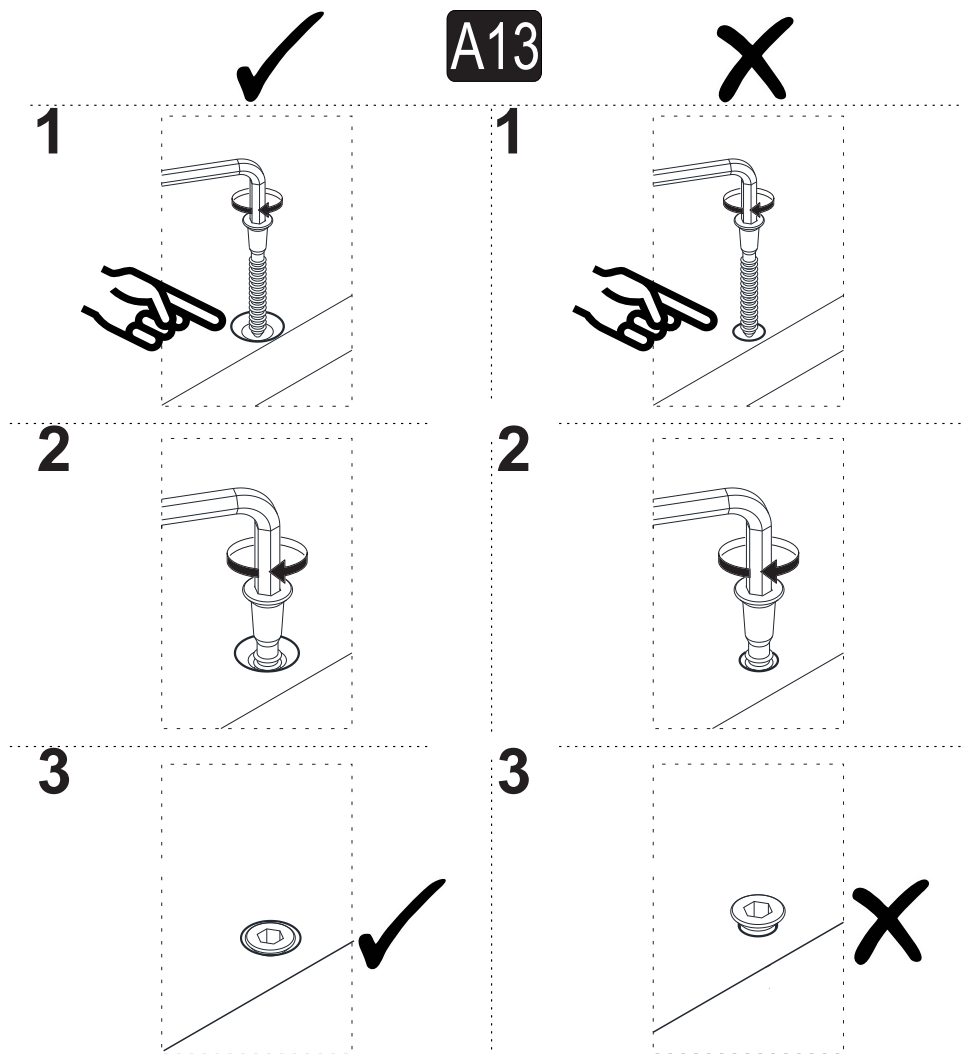


4



ATTENTION !!





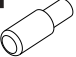








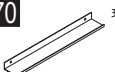

Our products are screw system. Before you proceed with installation try to understand the following

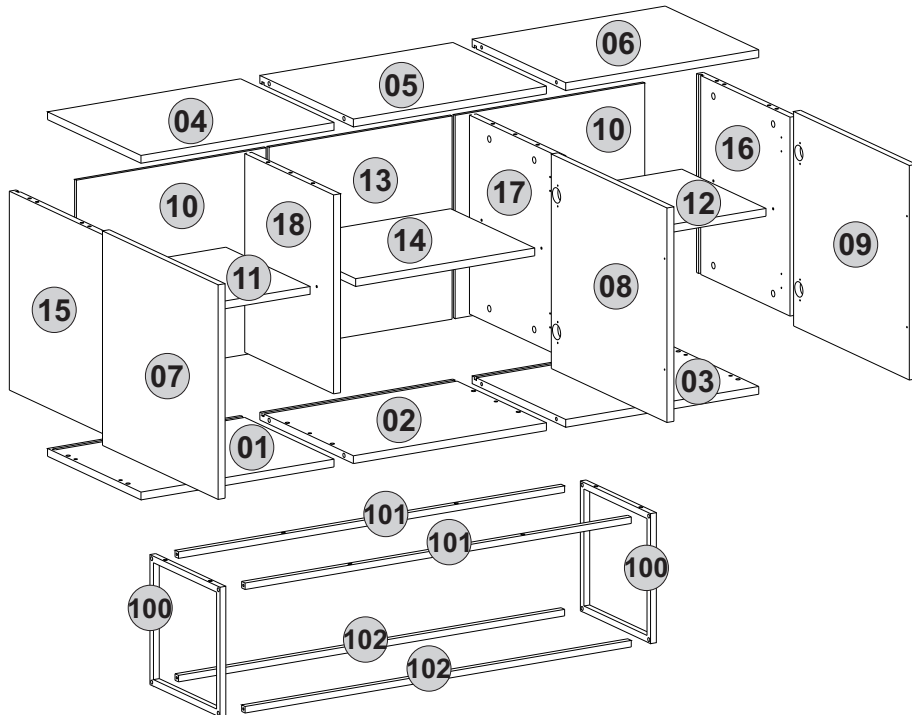


Follow the installation steps in the order as shown.
Position the parts as shown in the installation guide steps.

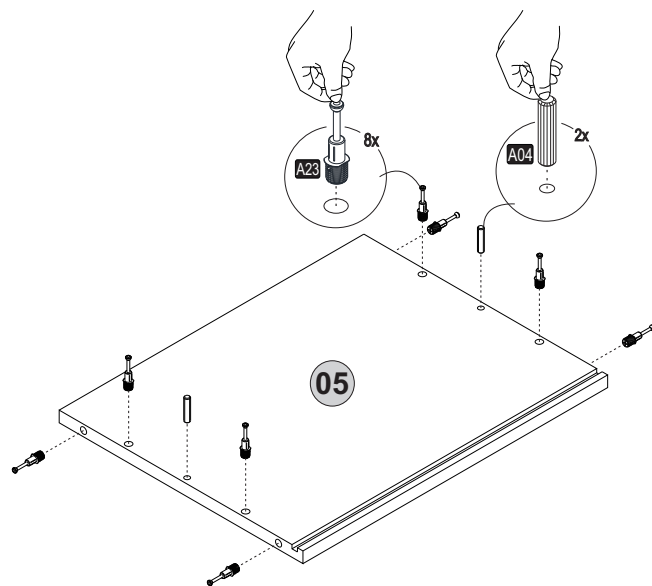


ACCESSORY LIST

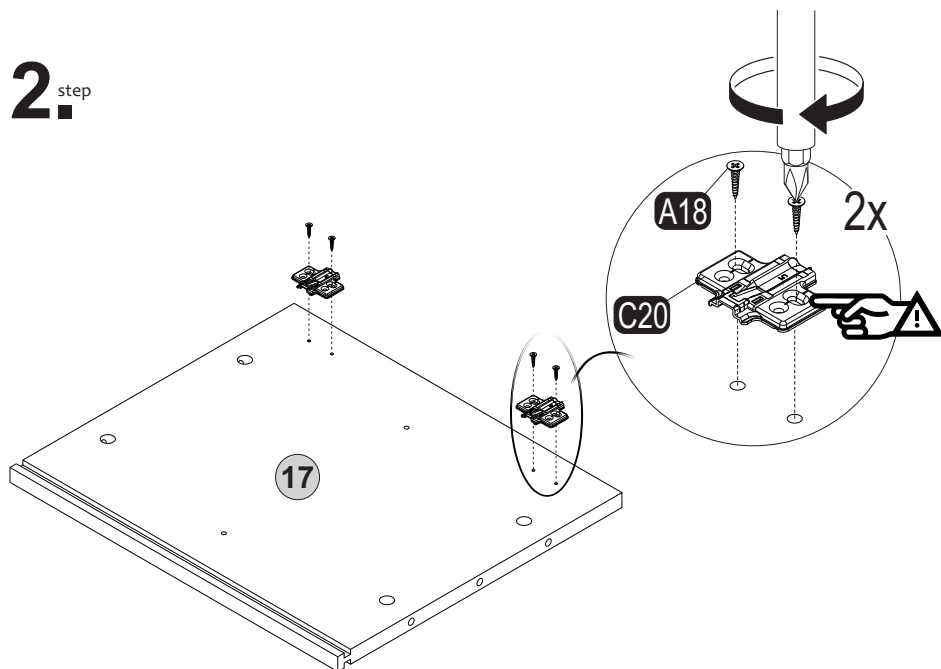
A22 Minifix kit8  24x 18mm	A23 Minifix M16  24x	A04 Ø8  12x	A12 Allen  1x	A48 Raf Pimil  12x 3,5x18
A06  C1-8x C2-8x C3-8x P.D.	C14  Dm(S) 3x	C17  DmF(S) 3x	C20  Mtk(S) 6x	A18  48x 3,5x16 (Black)
A69  8x	B13  25 (black)mm 16x	A25  ARK.PL 12x	Z70  Kulp 300mm 3x	A50  6x



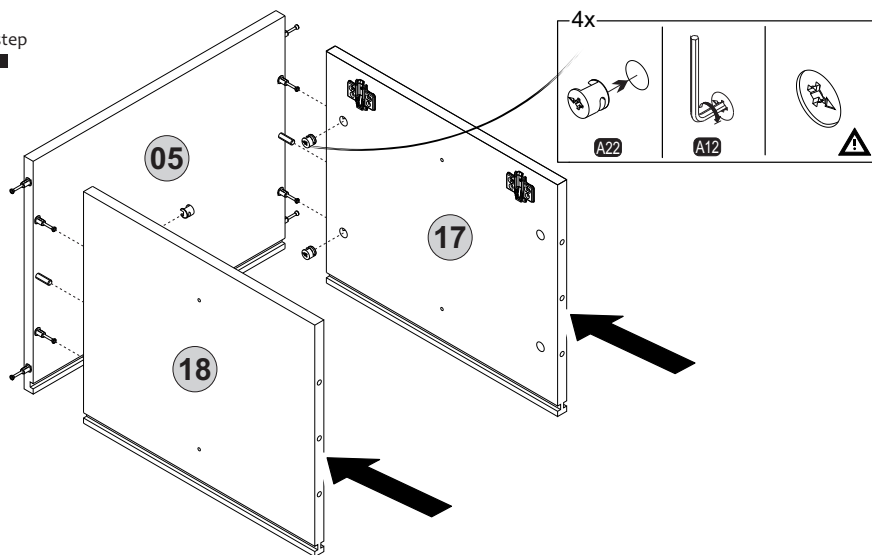
1 ^{step}



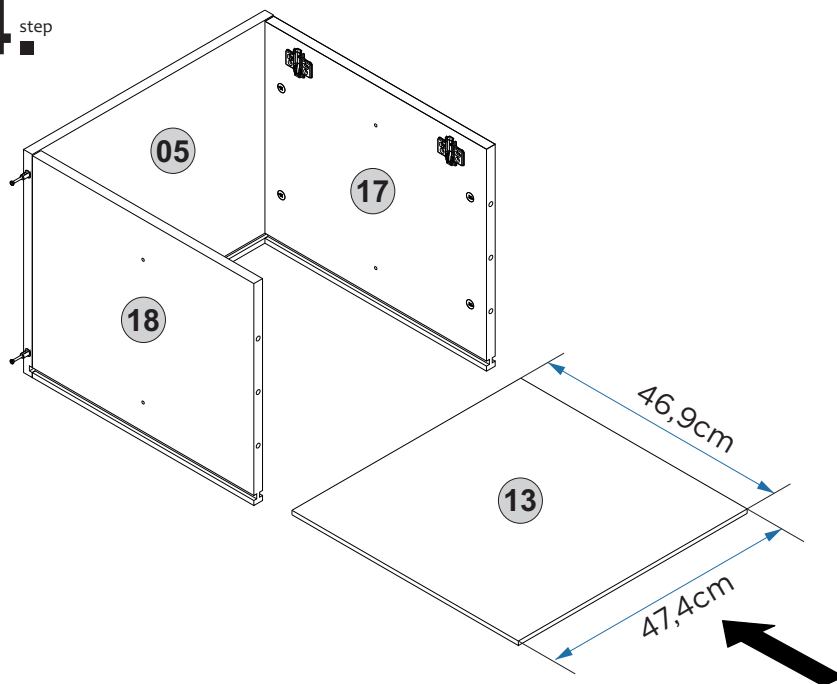
2 ^{step}



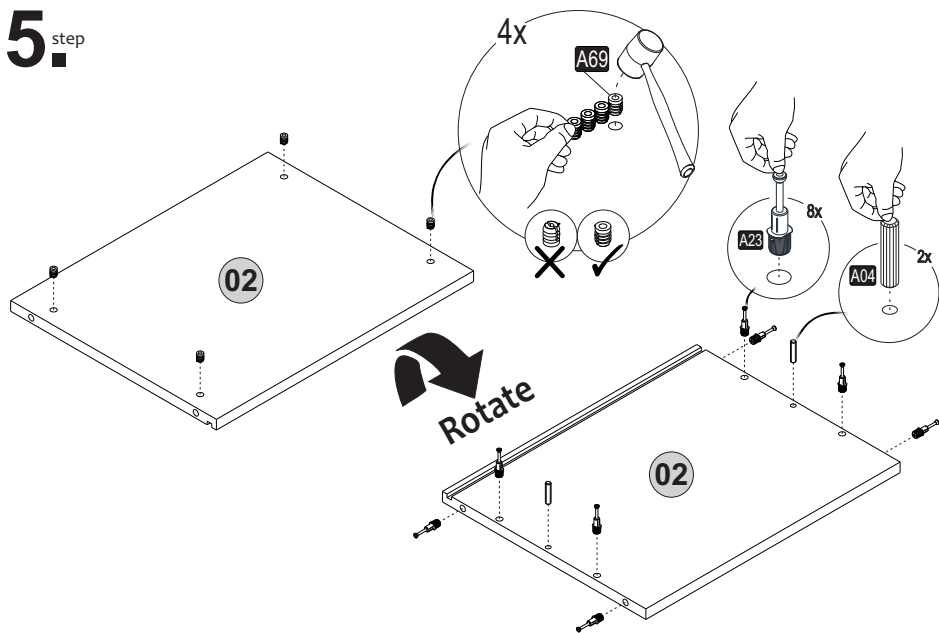
3. step



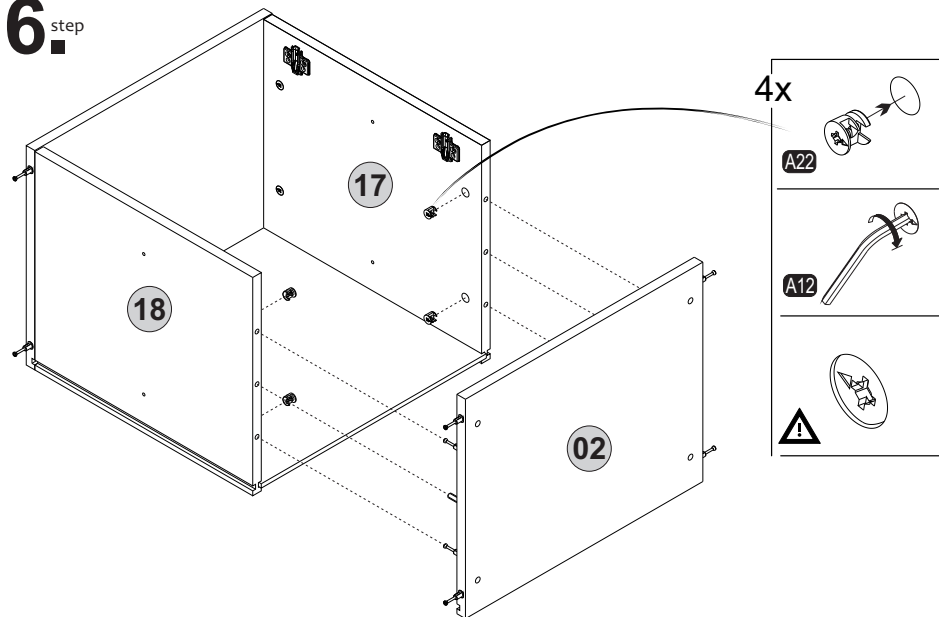
4. step



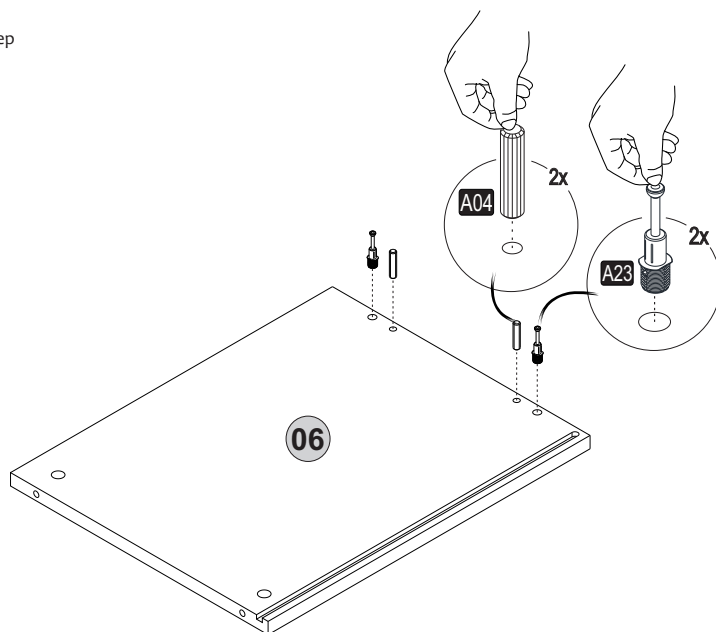
5.^{step}



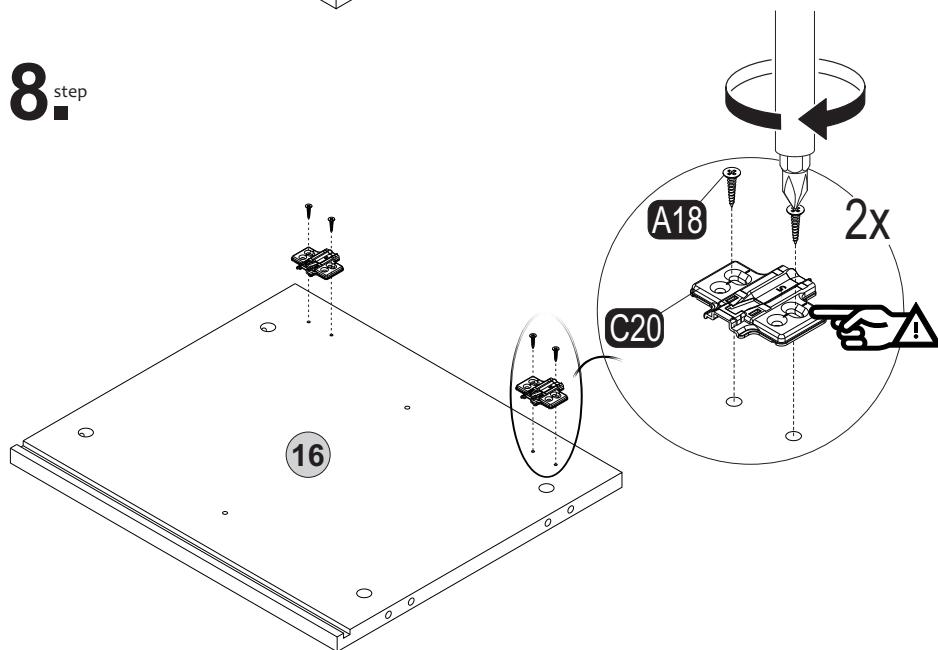
6.^{step}



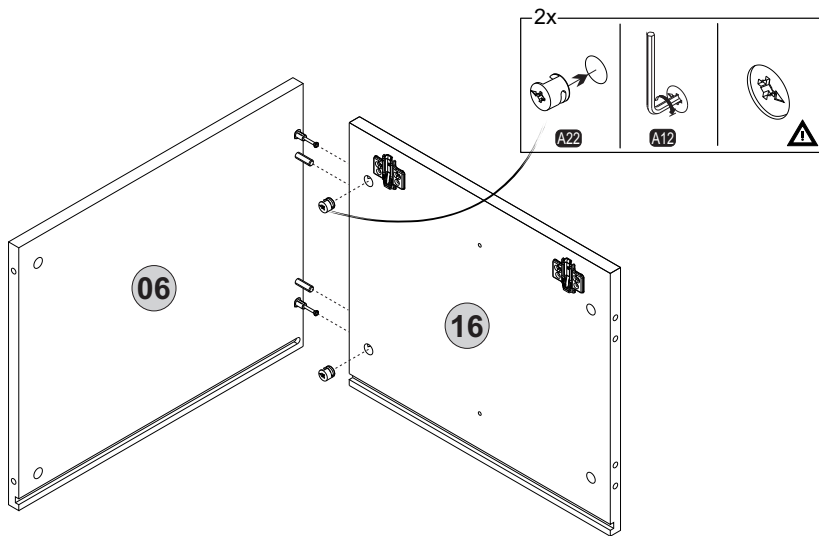
7._{step}



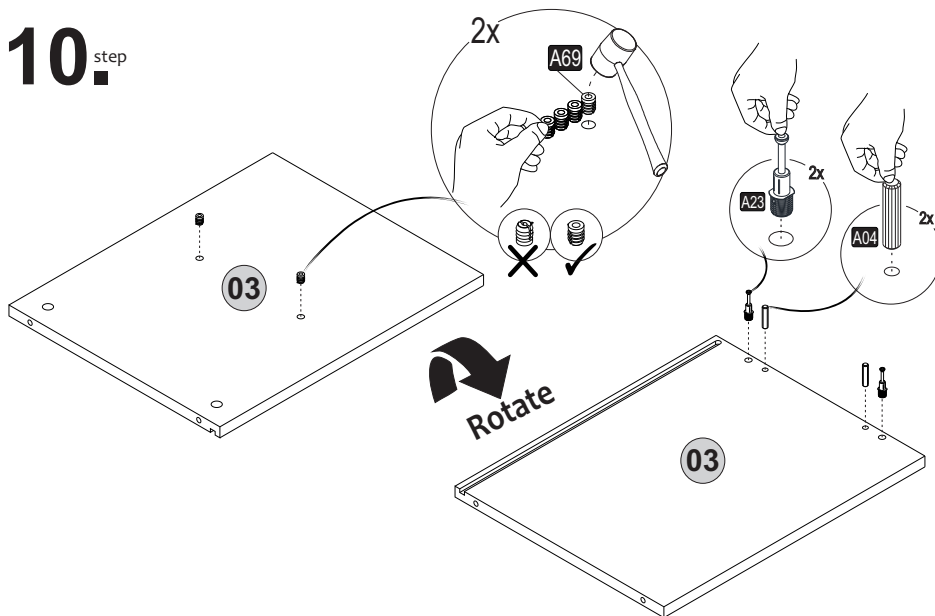
8._{step}



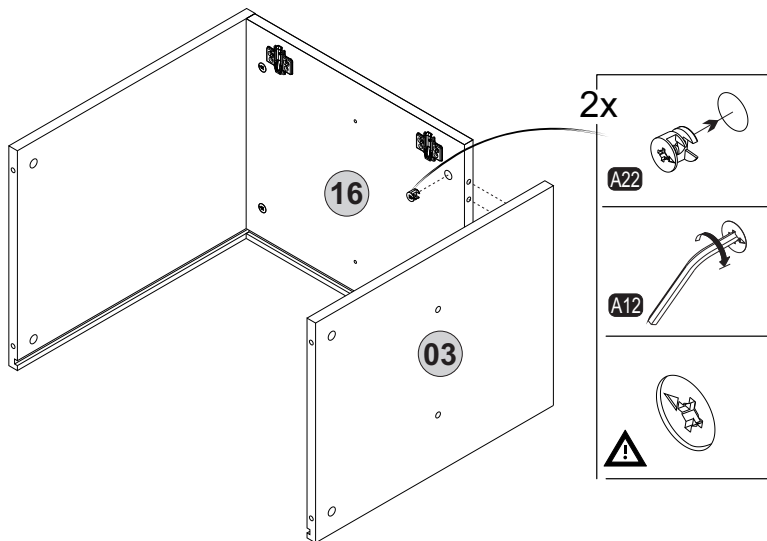
9.^{step}



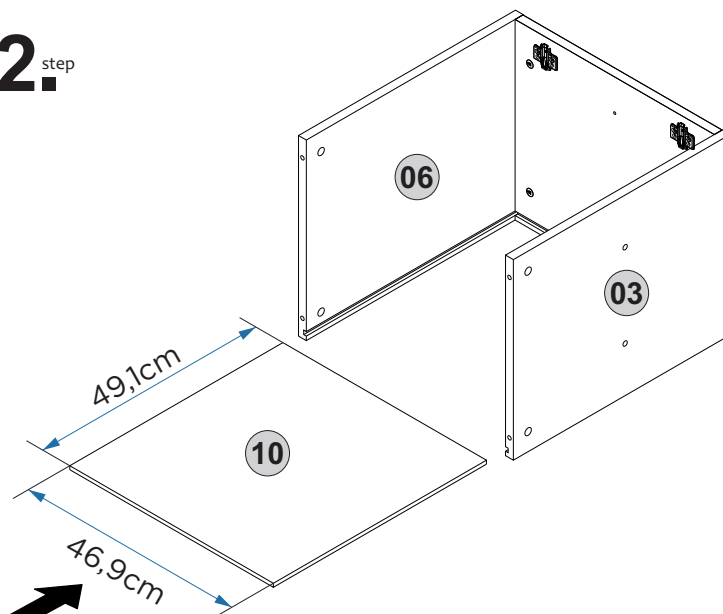
10.^{step}



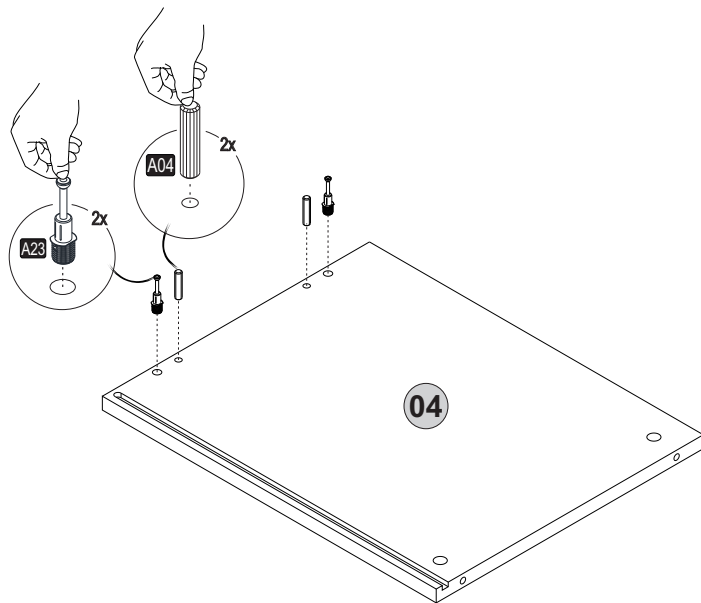
11._{step}



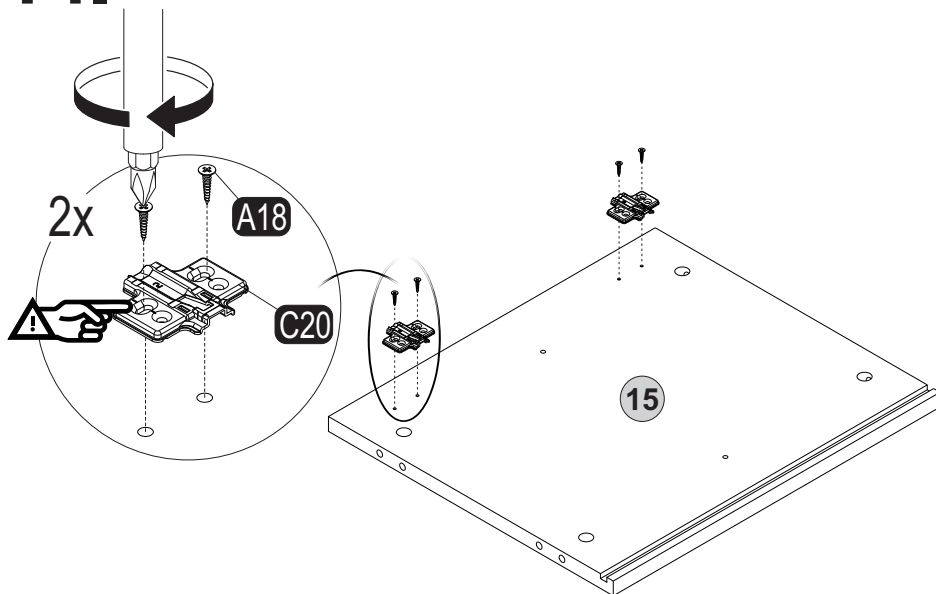
12._{step}



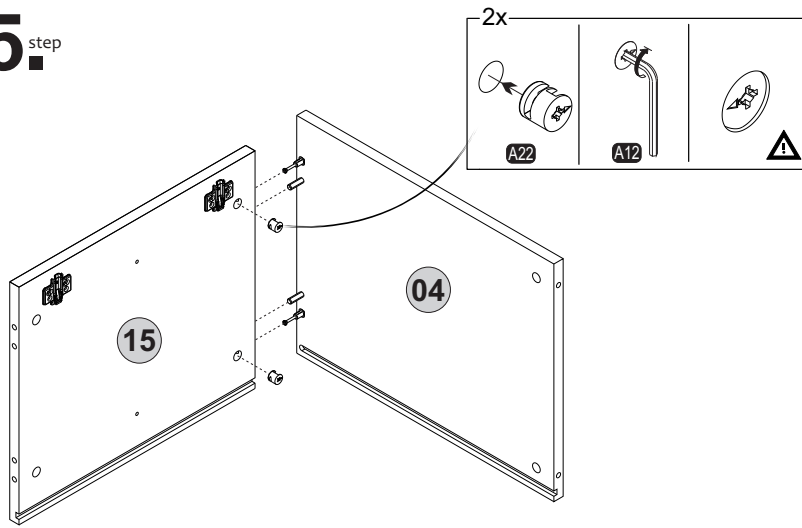
13.^{step}



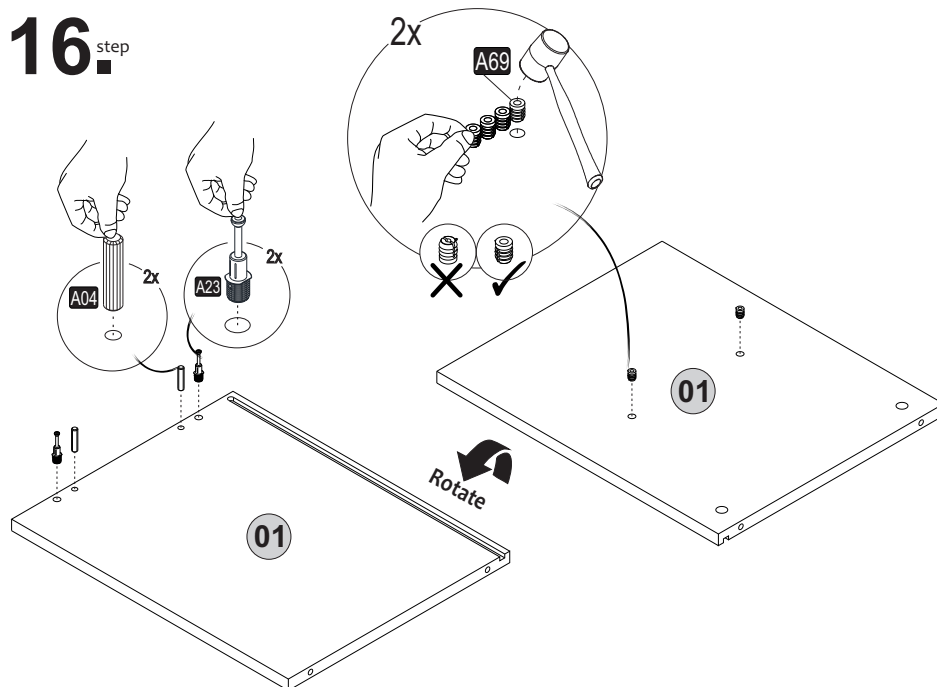
14.^{step}



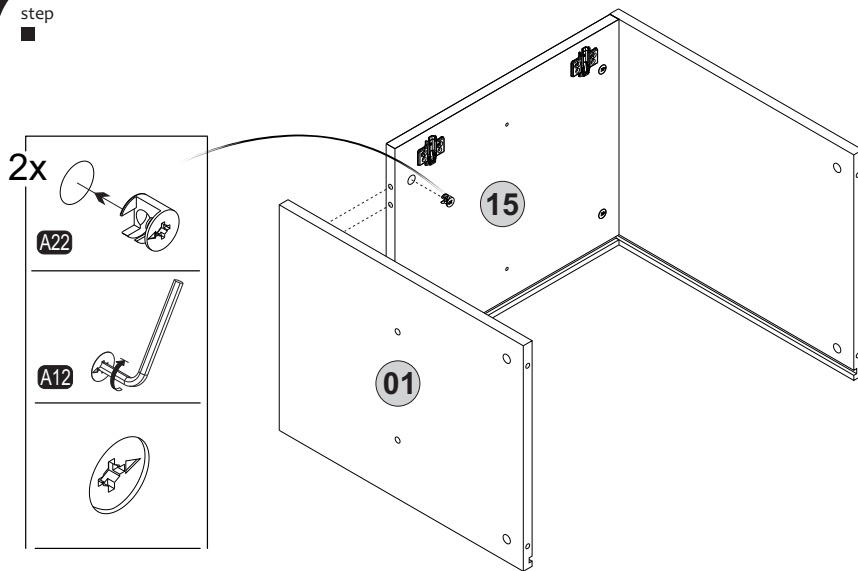
15.^{step}



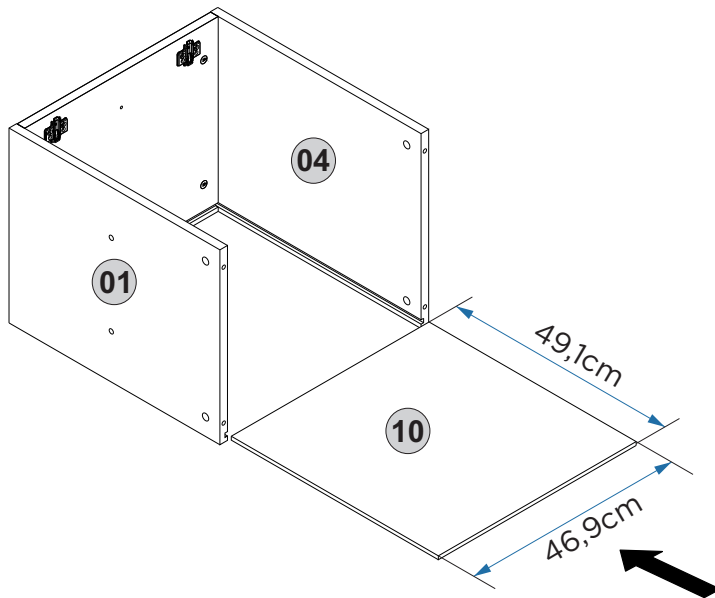
16.^{step}



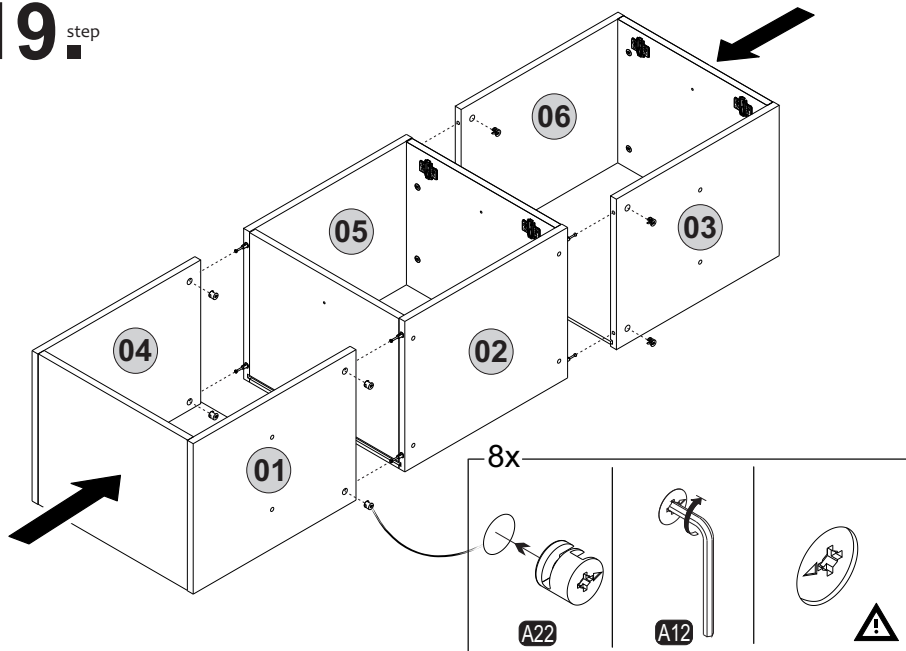
17.^{step}



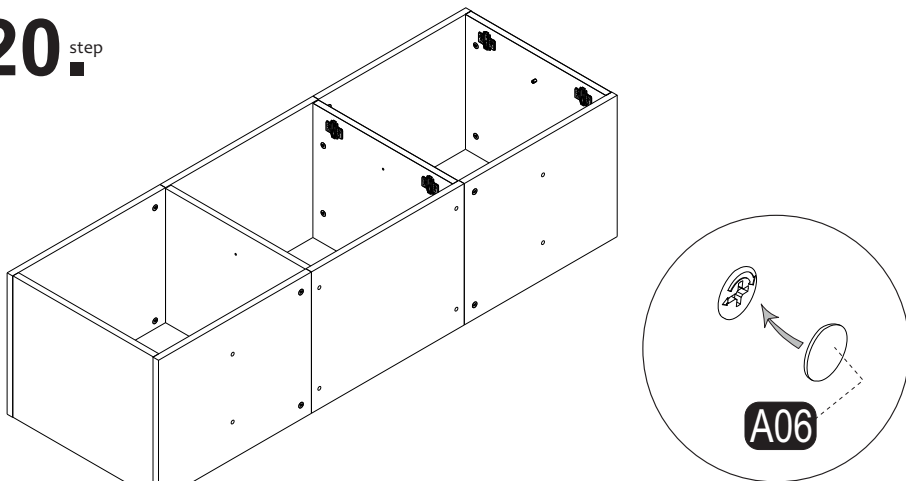
18.^{step}



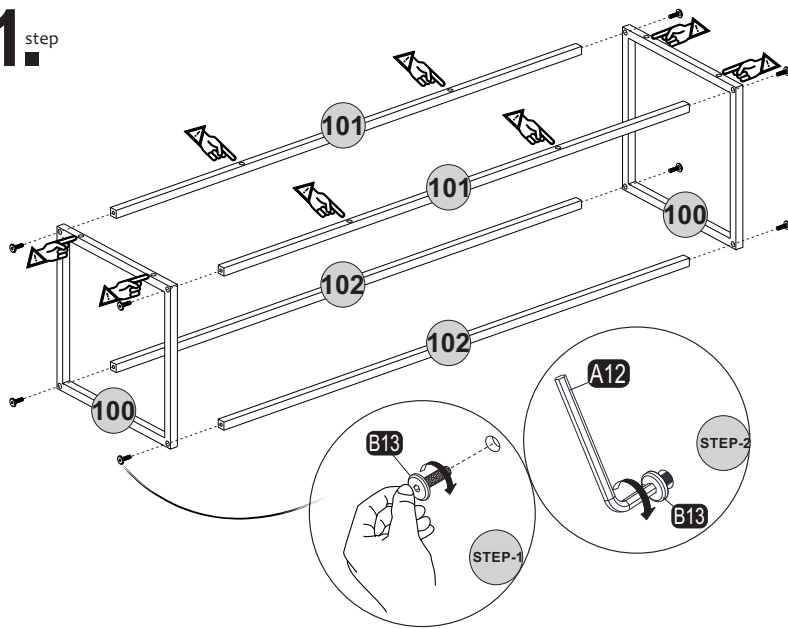
19.^{step}



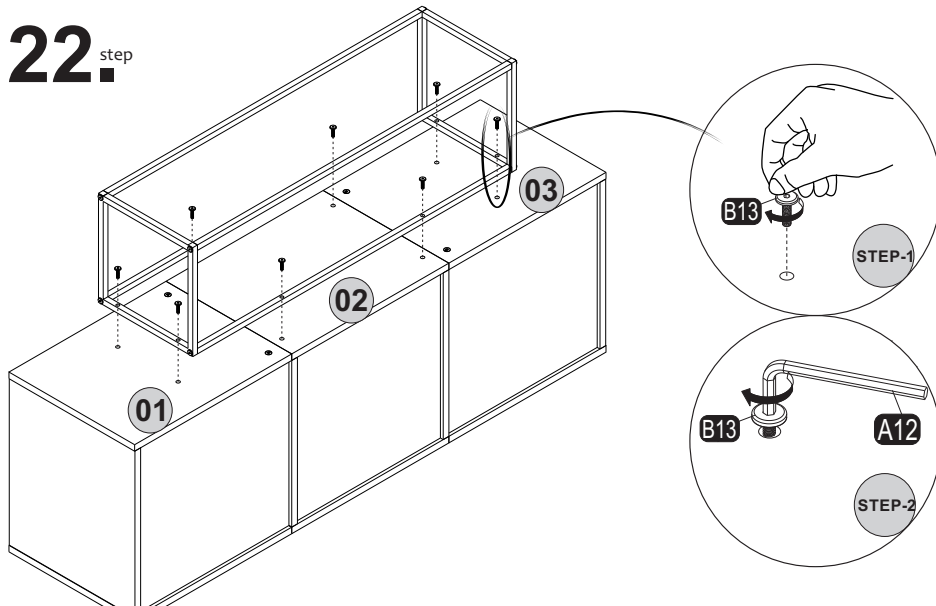
20.^{step}



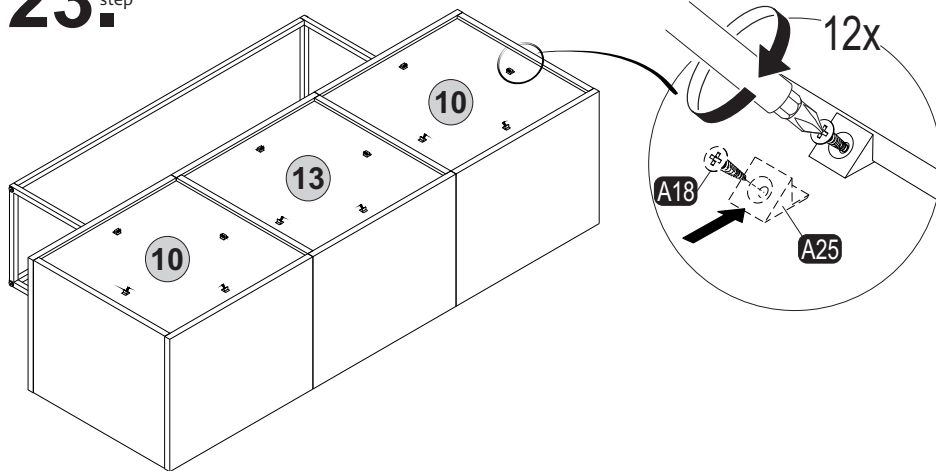
21.^{step}



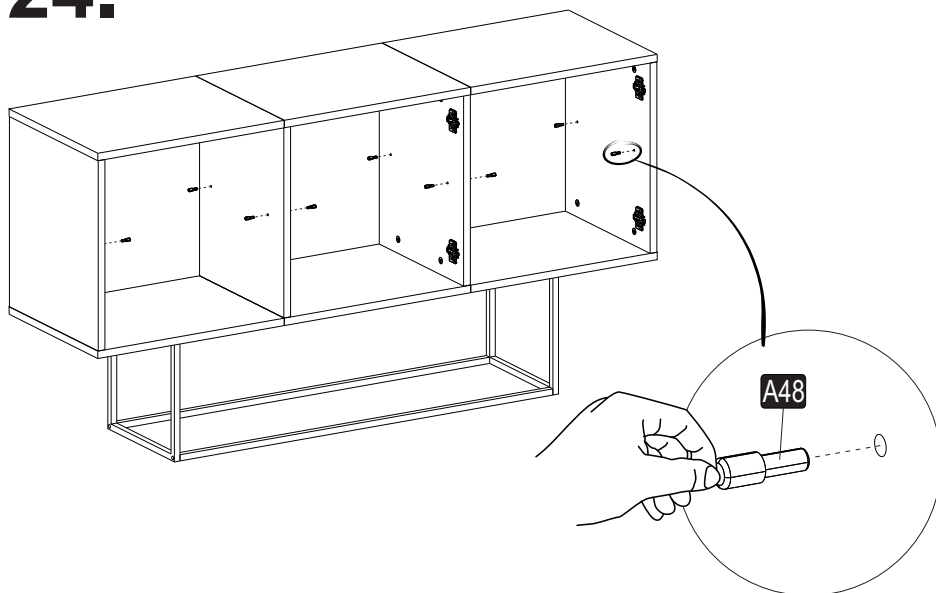
22.^{step}



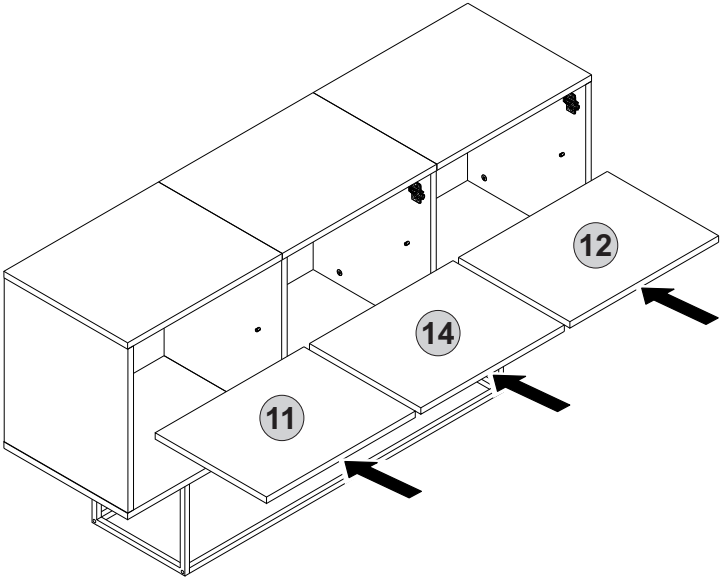
23. step



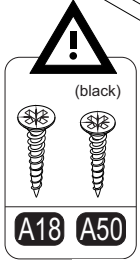
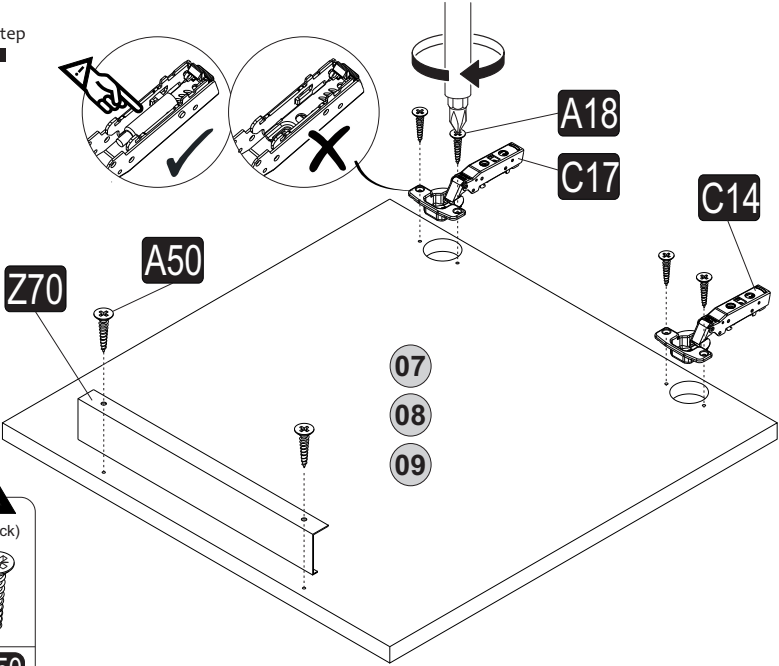
24. step



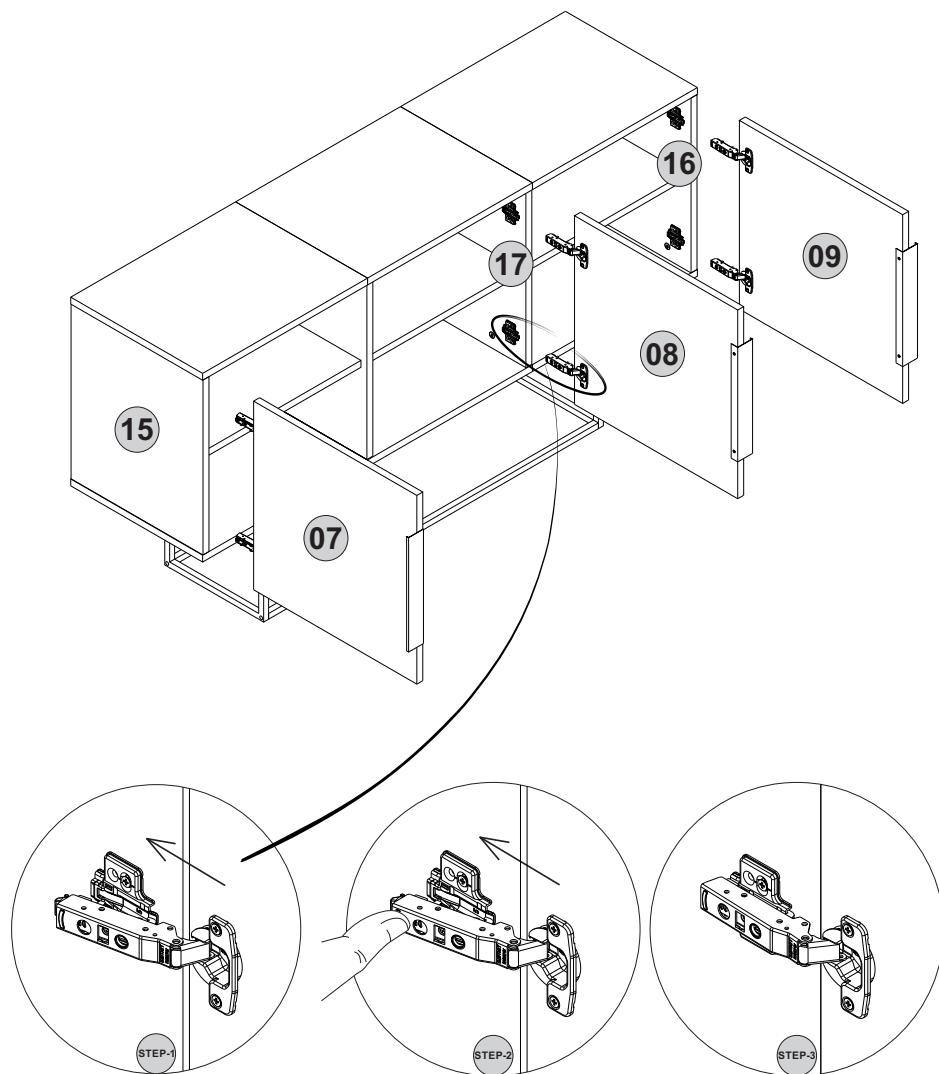
25^{step}



26^{step}



27.^{step}



28^{step}

