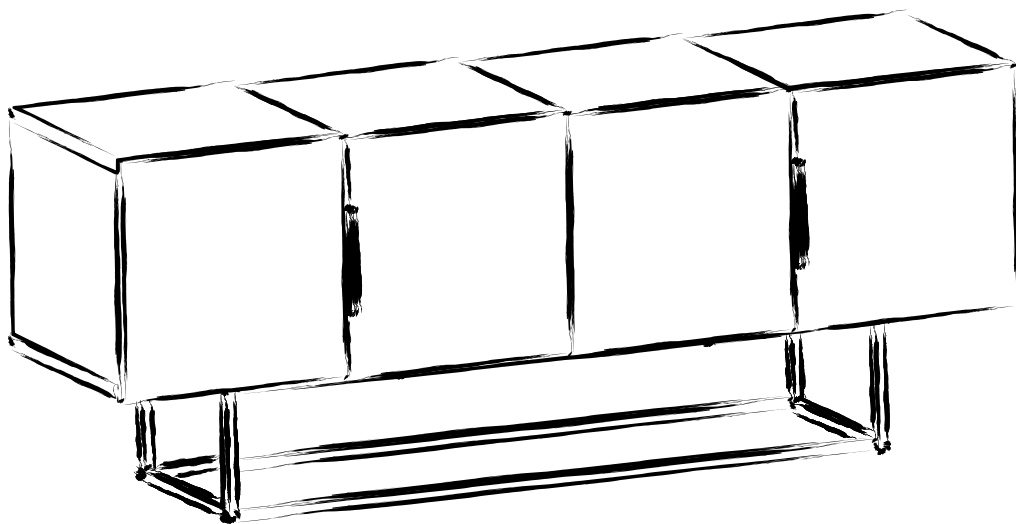


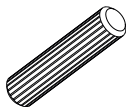
GP037-0177,4



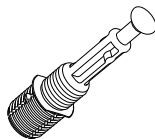
ATTENTION !!

Minifix is the main connection material used in our products.
Before starting assembly, please check the drawings below.

A04



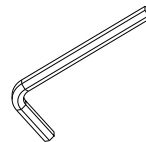
A23



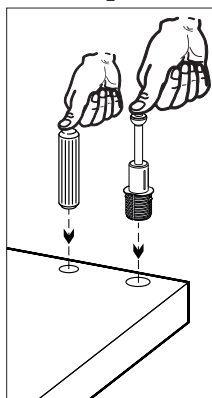
A22



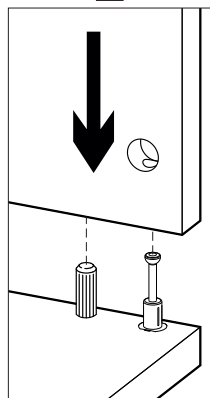
A12



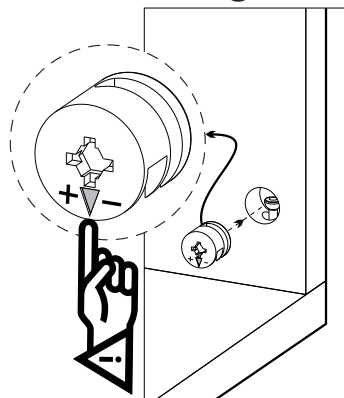
1



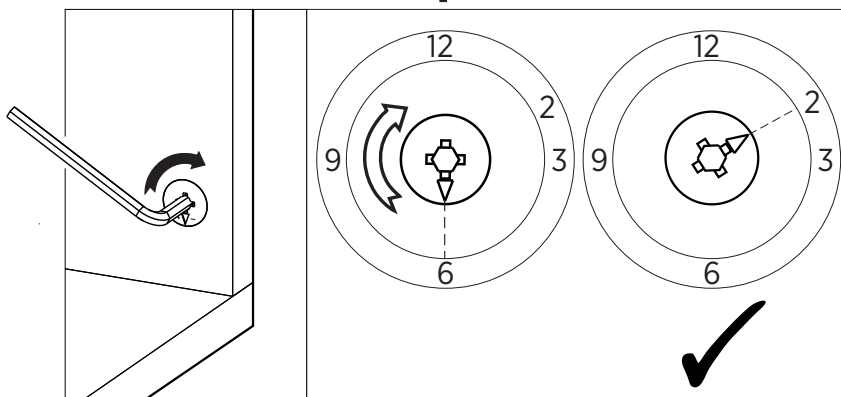
2



3

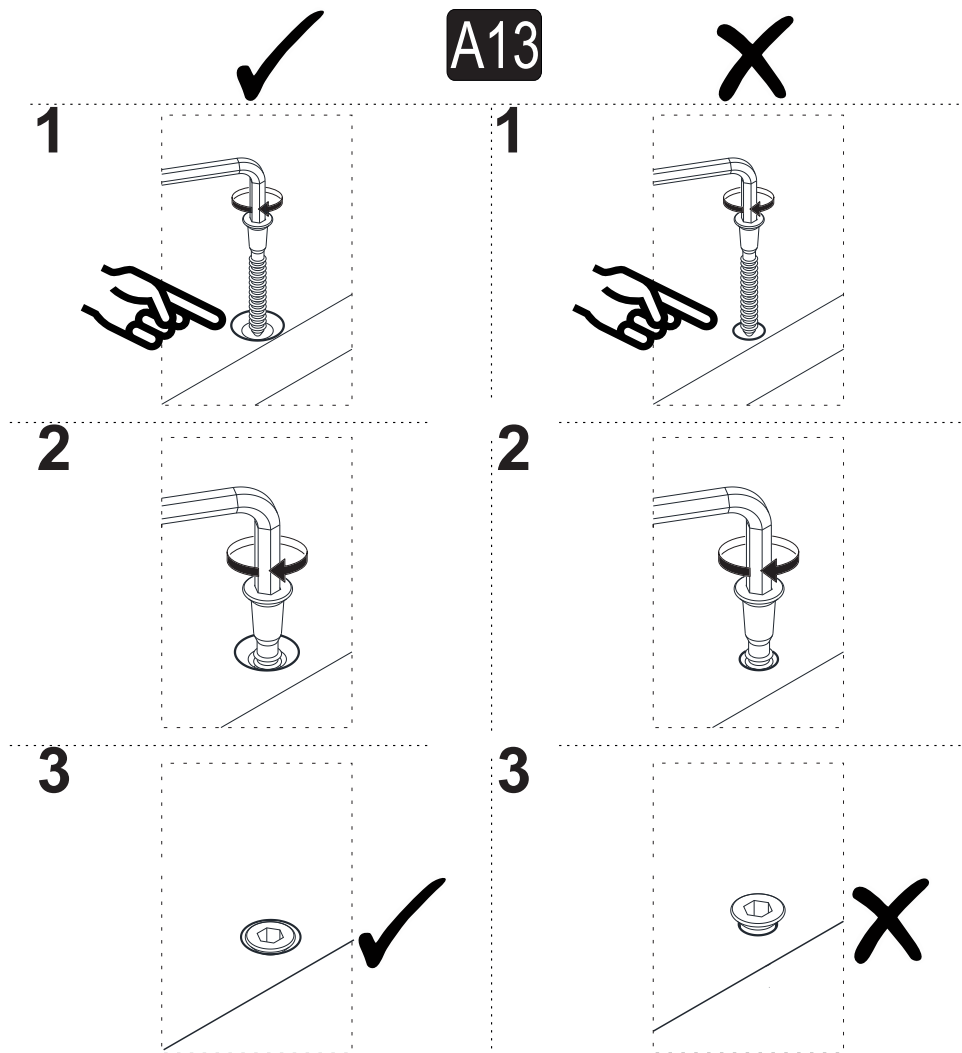


4



ATTENTION !!









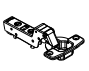







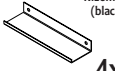
Our products are screw system. Before you proceed with installation try to understand the following

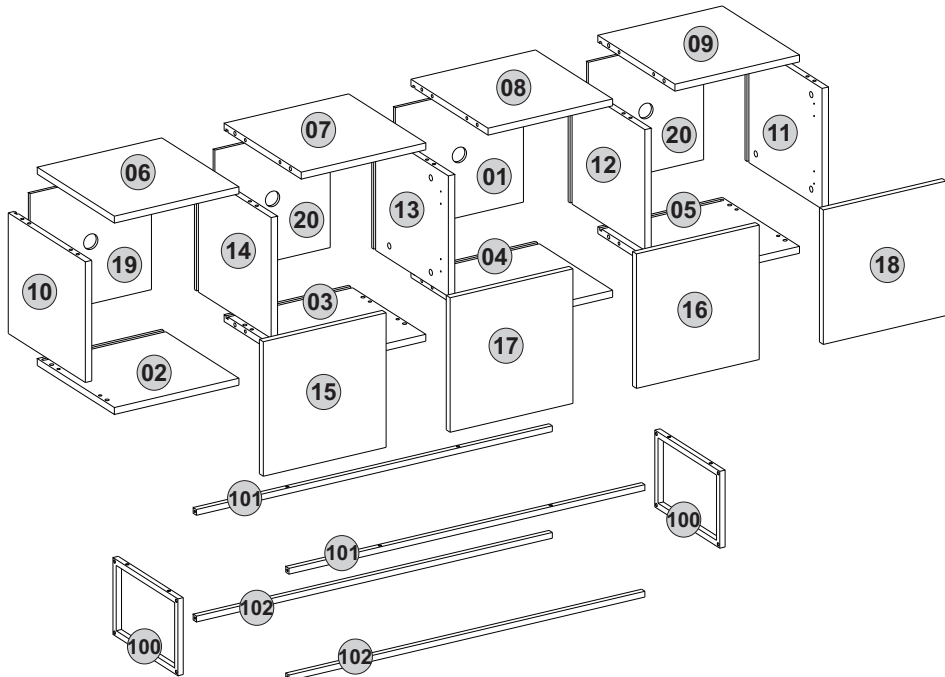


Follow the installation steps in the order as shown.
Position the parts as shown in the installation guide steps.

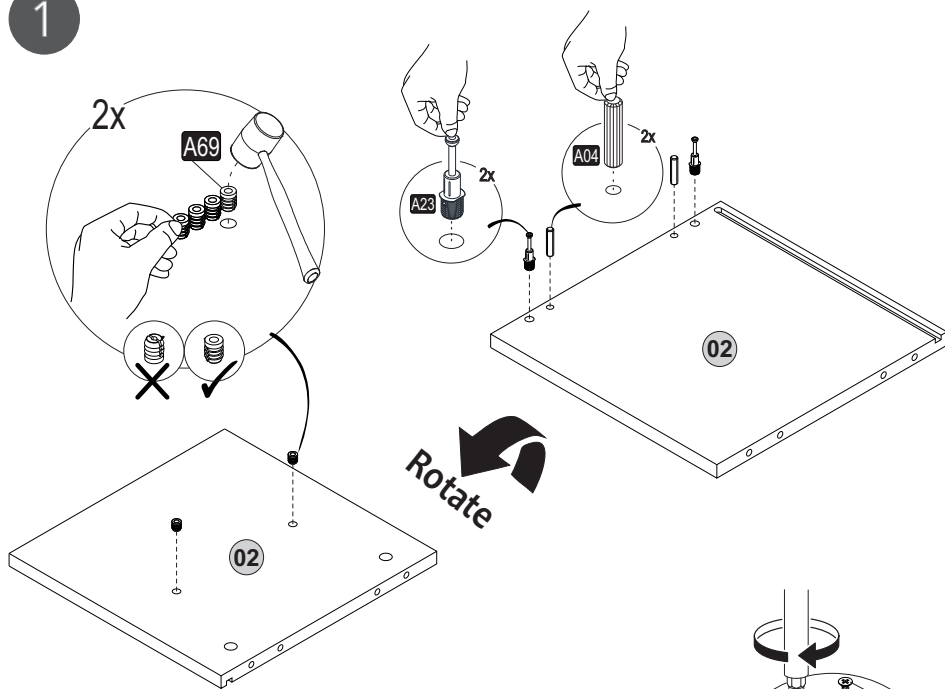


ACCESSORY LIST

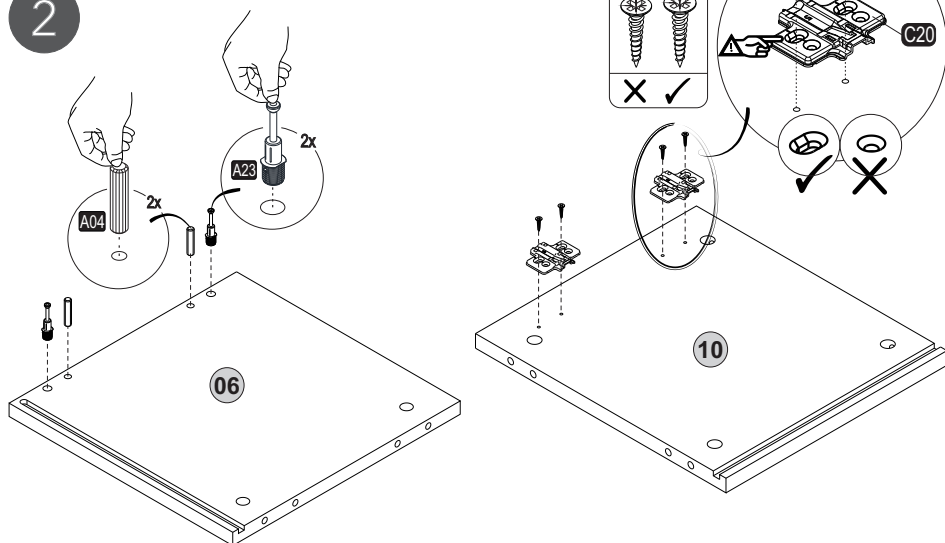
A22 Minifix kt18  32x	A23 Minifix M10  32x	A04 Ø8  32x	A12 Allen  1x	A06 18mm C1-8x C2-8x C3-8x C4-8x 
C20 Mtk(S)  8x	C14 Dm(S)  3x	C17 Dmf(S)  3x	C16 Sdb(S)  1x	C19 SdbF(S)  1x
A69 P.D.  8x	B13 25 (black)mm  16x	A25 ARK.PL  16x	A18 3,5x18  64x	A50 3,5x16 (Black)  8x
			Z105 TM TV  100-2x 101-2x 102-2x	Z51 K128mm (black)  4x



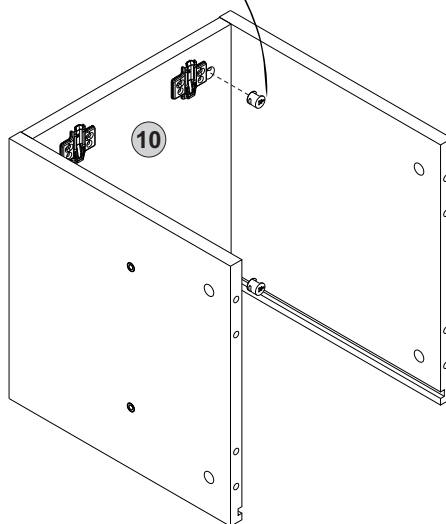
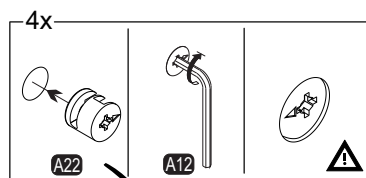
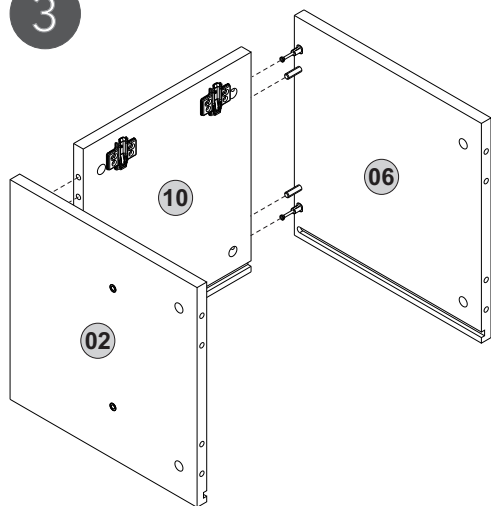
1



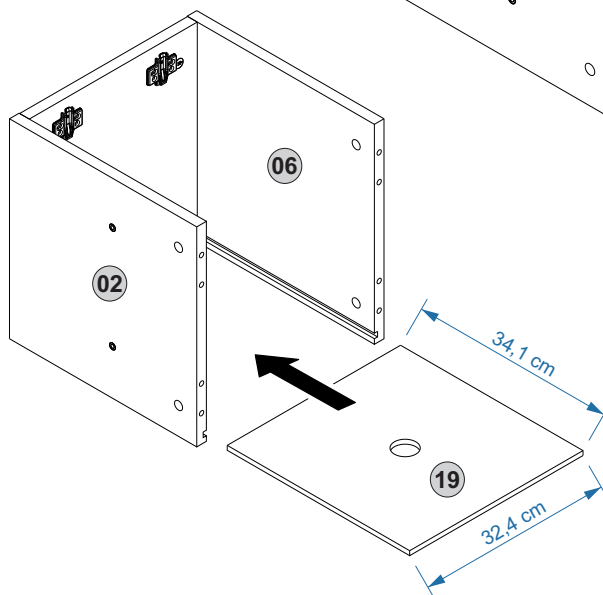
2



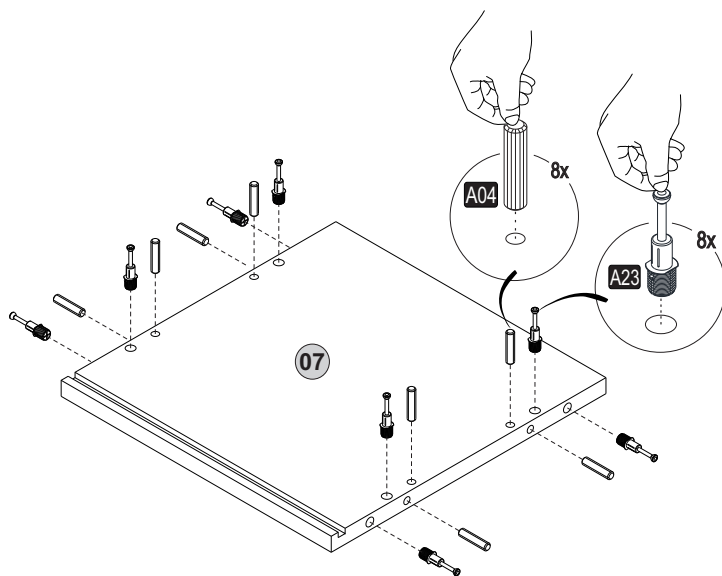
3



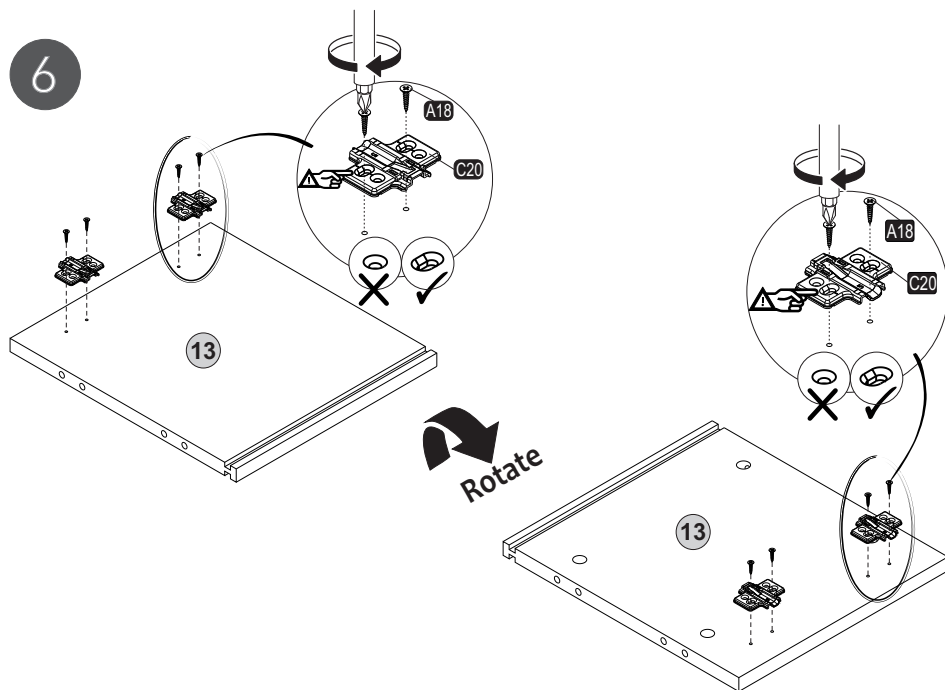
4



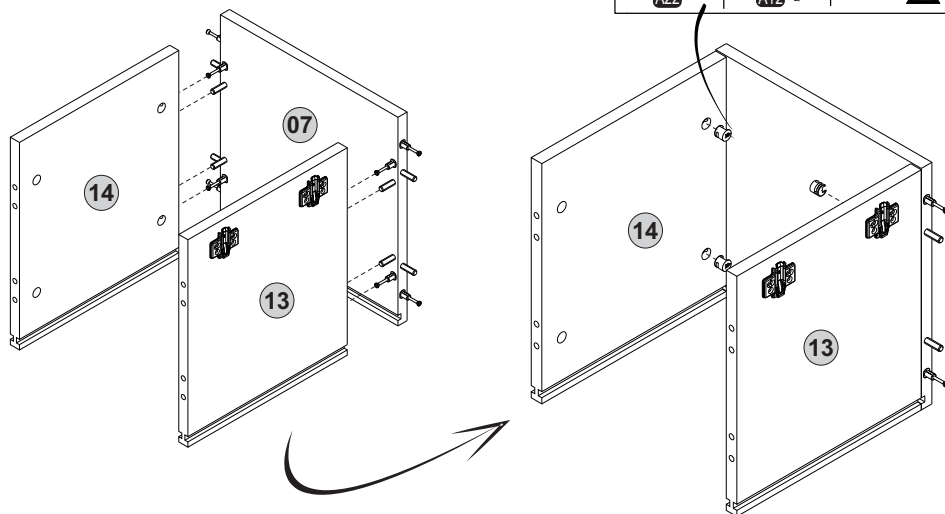
5



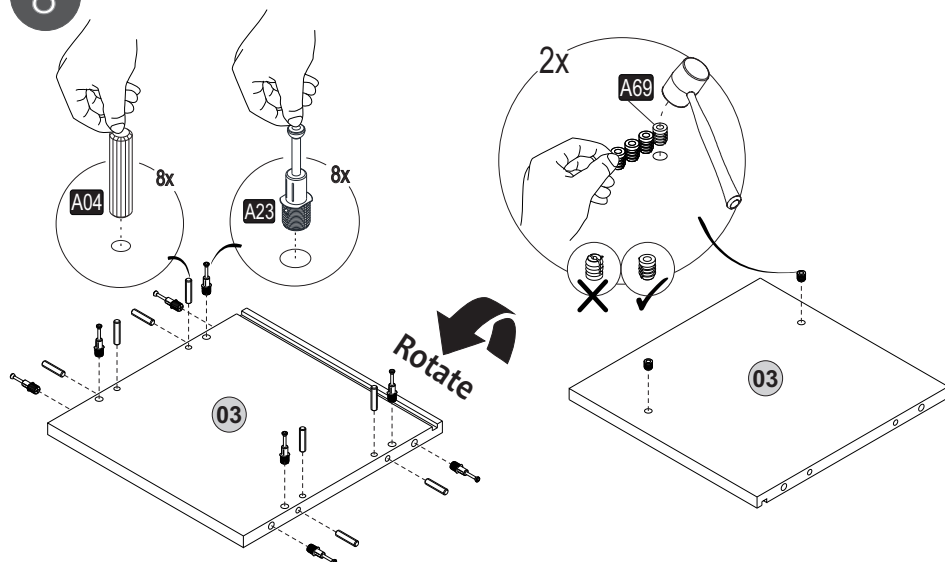
6



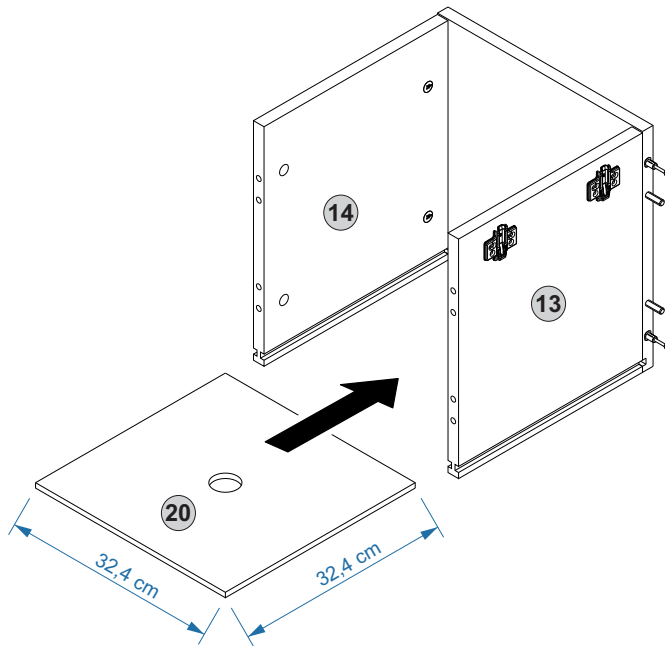
7



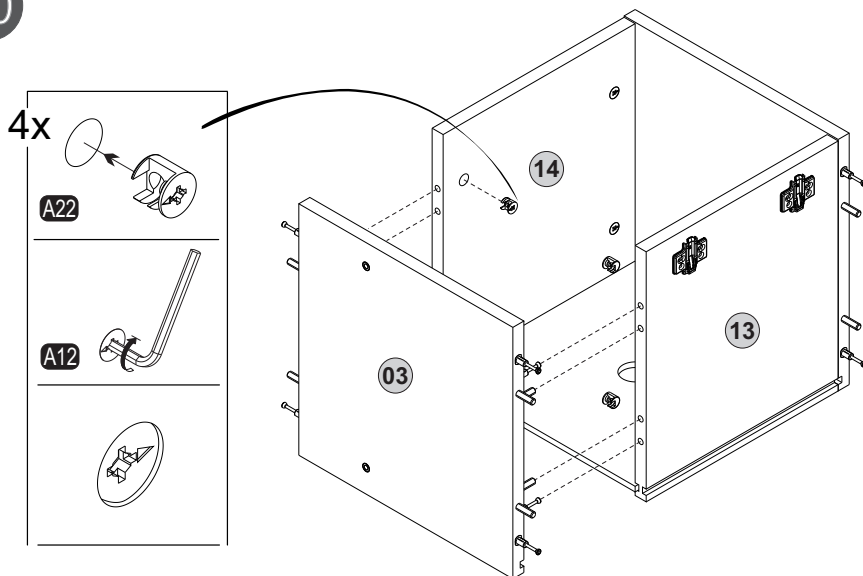
8



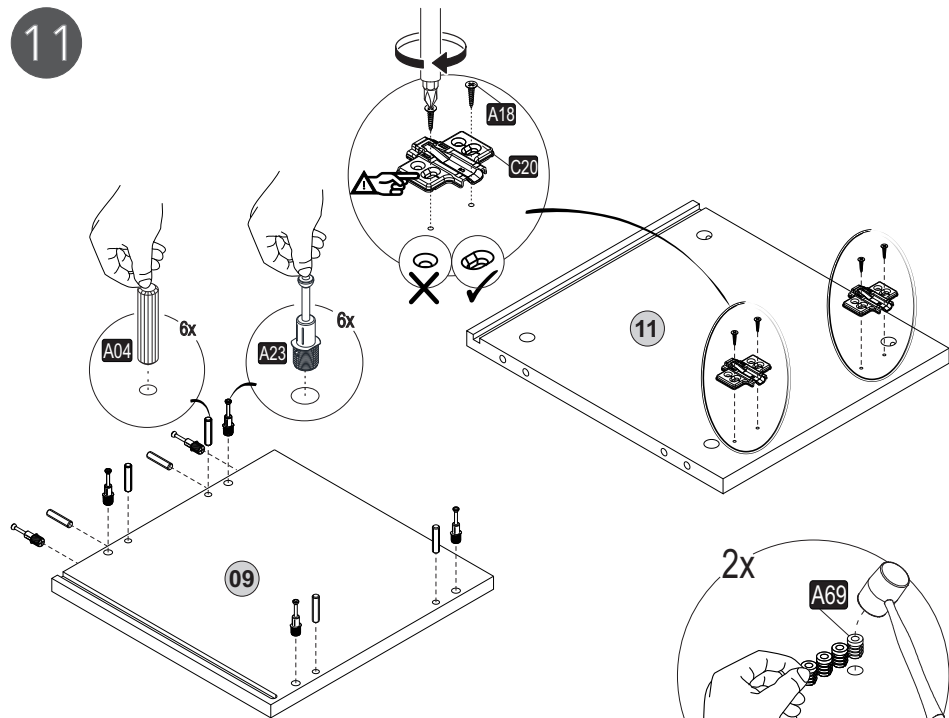
9



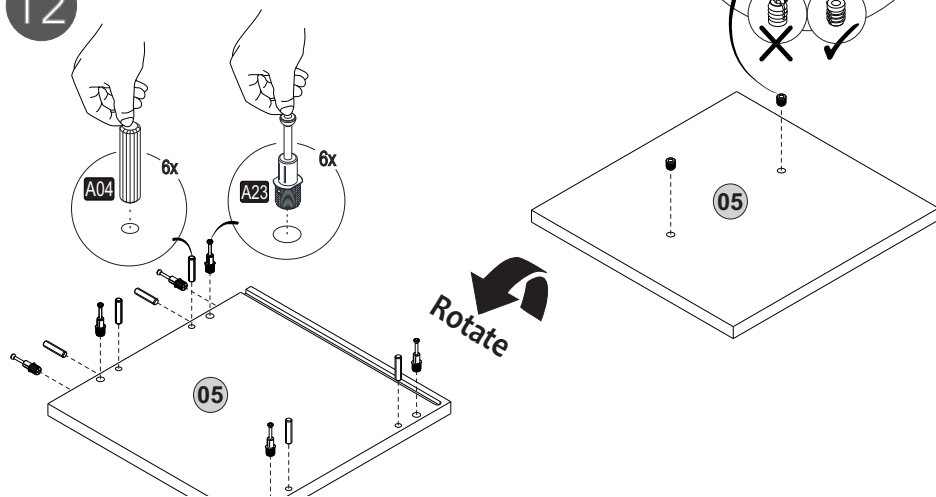
10



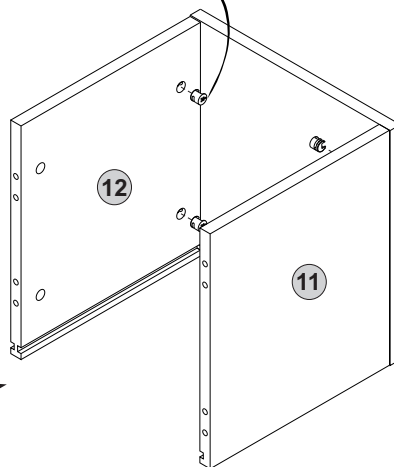
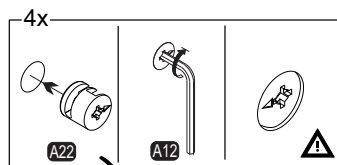
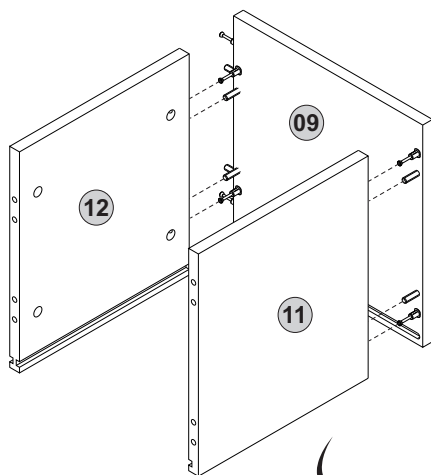
11



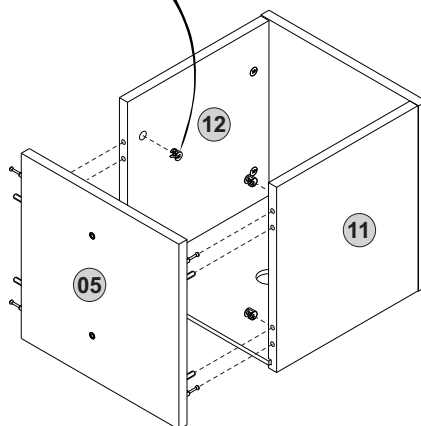
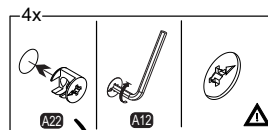
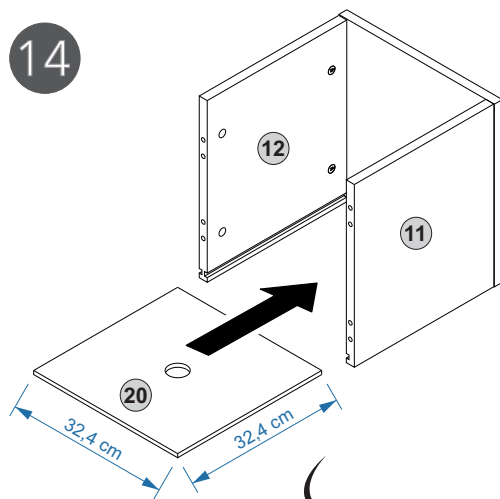
12



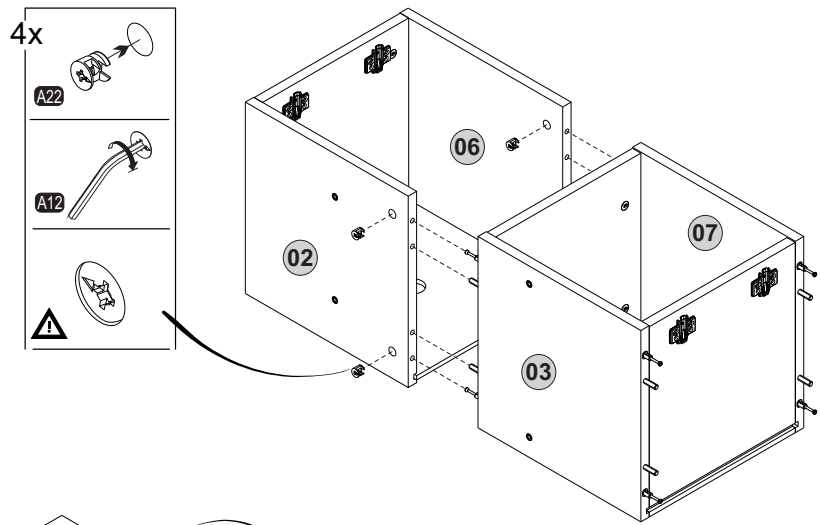
13



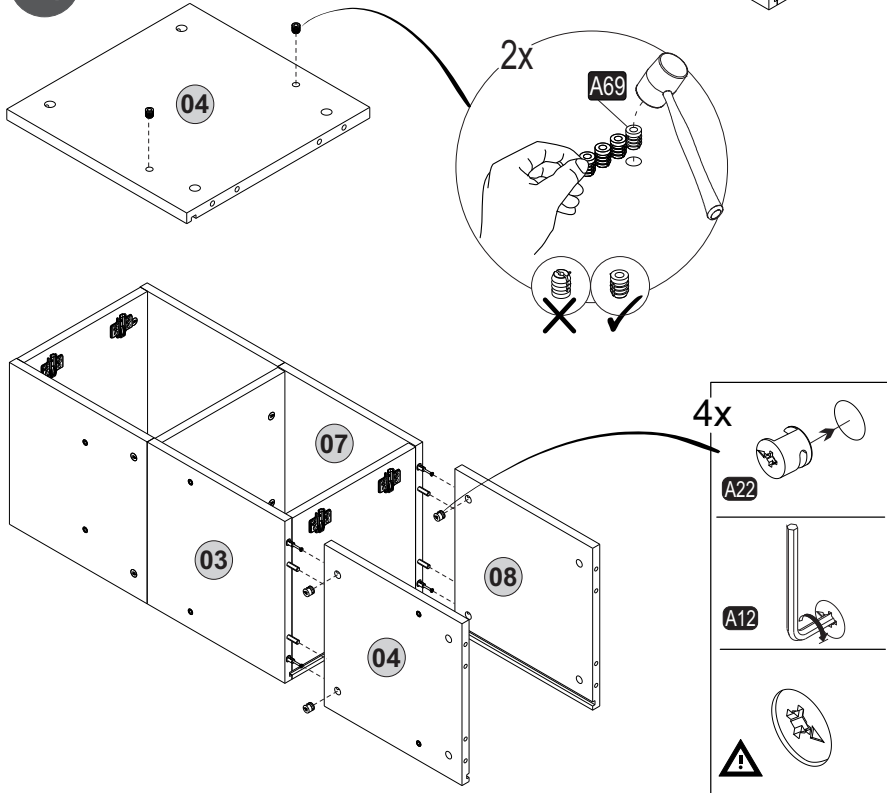
14



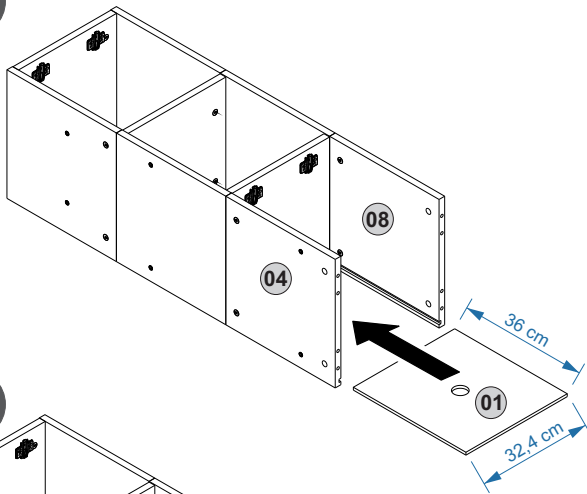
15



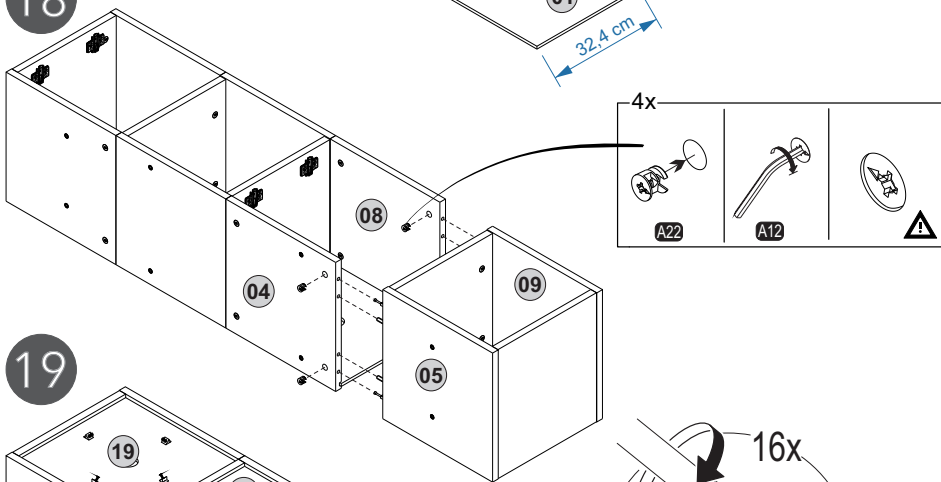
16



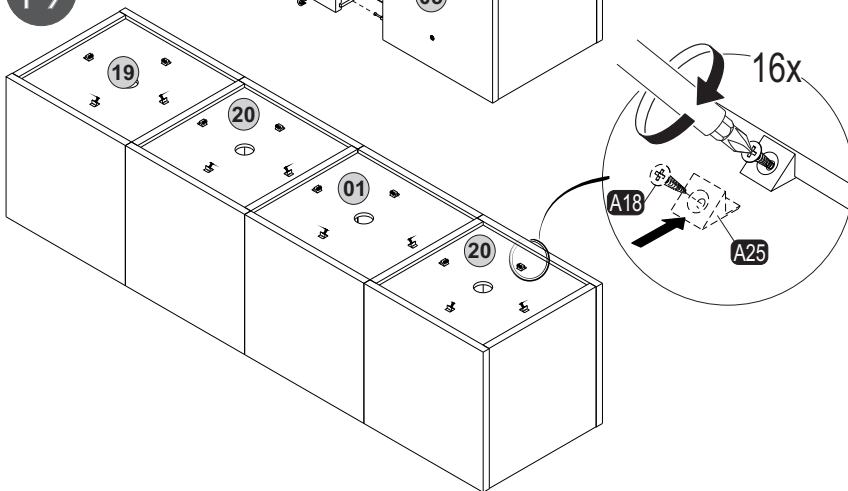
17



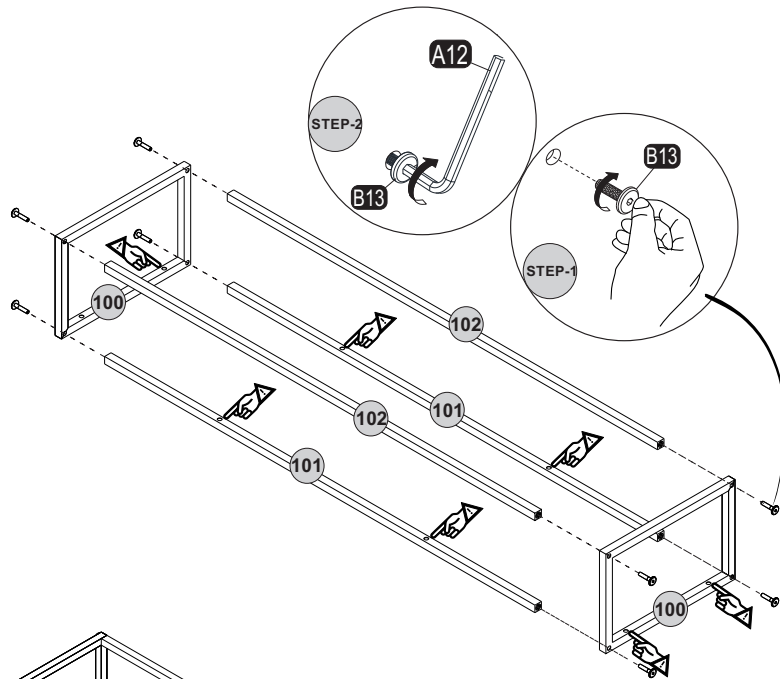
18



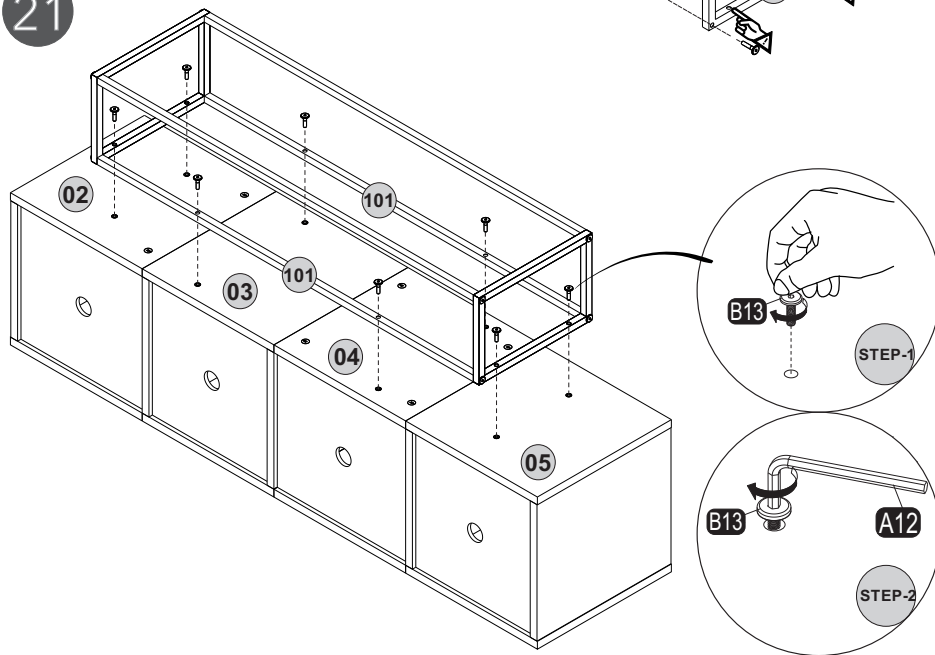
19

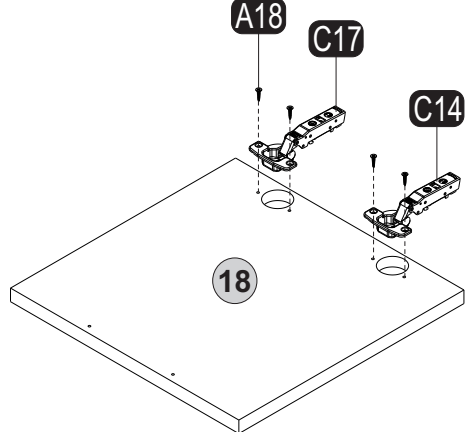
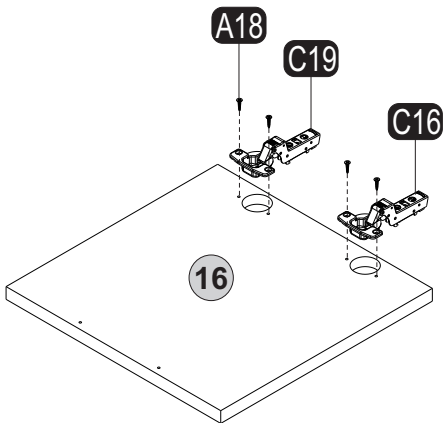
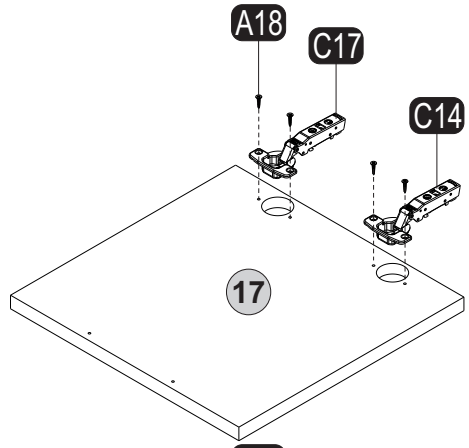
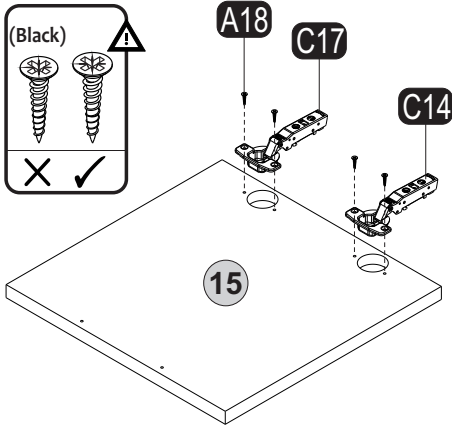
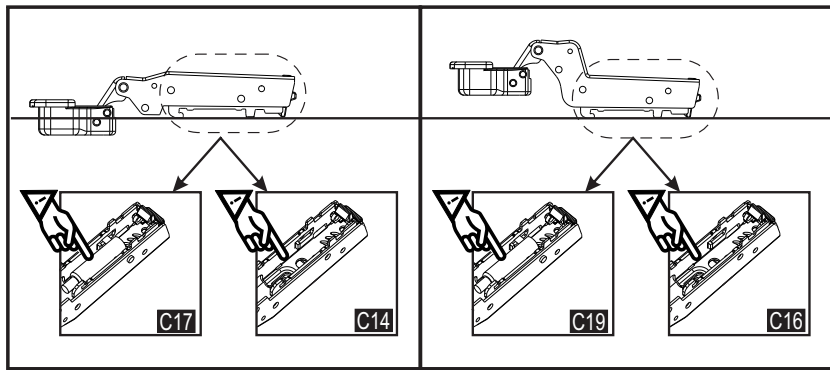


20



21





23

15

16

17

18

C19


C16

STEP 1

STEP 2

STEP 3

24

(Black) 

Z51

A50

A06

15

16

17

18

25

