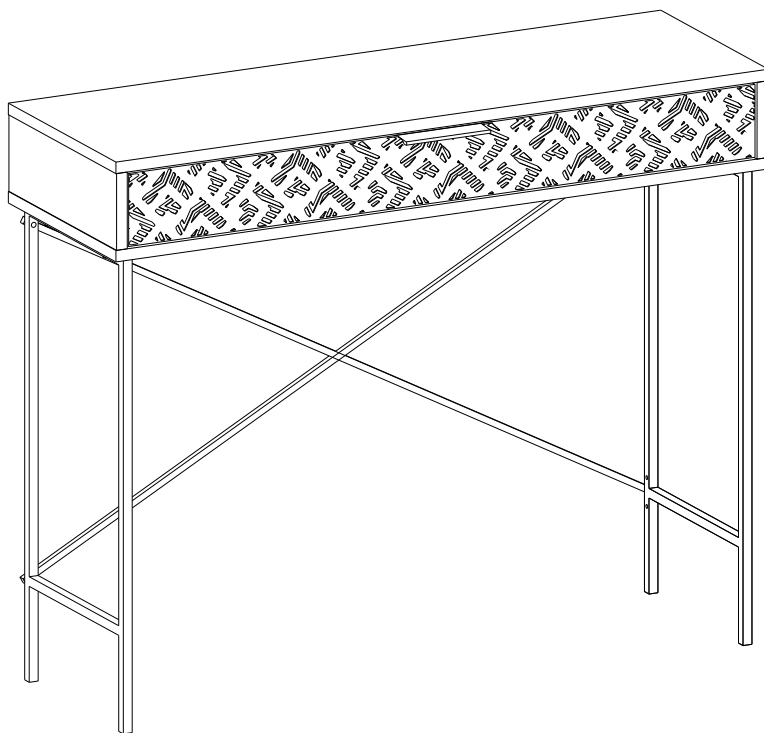


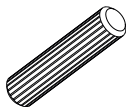
GP037-0191,1



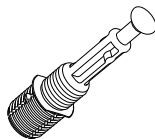
ATTENTION !!

Minifix is the main connection material used in our products.
Before starting assembly, please check the drawings below.

A04



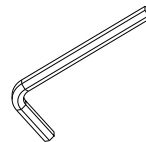
A23



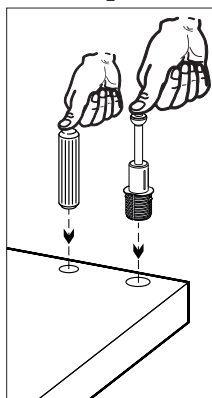
A22



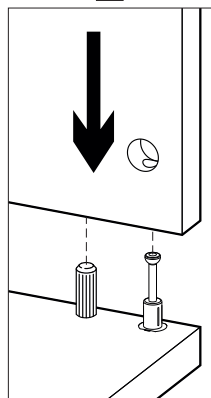
A12



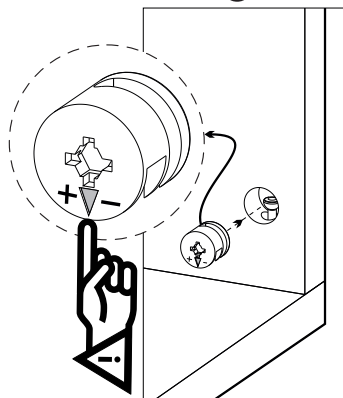
1



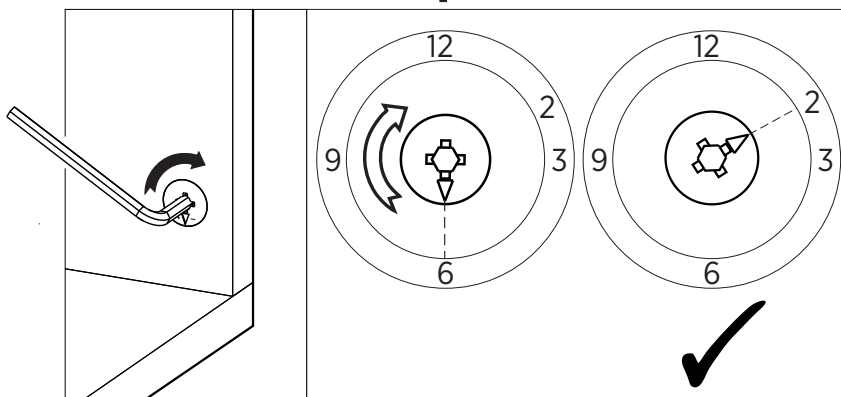
2



3

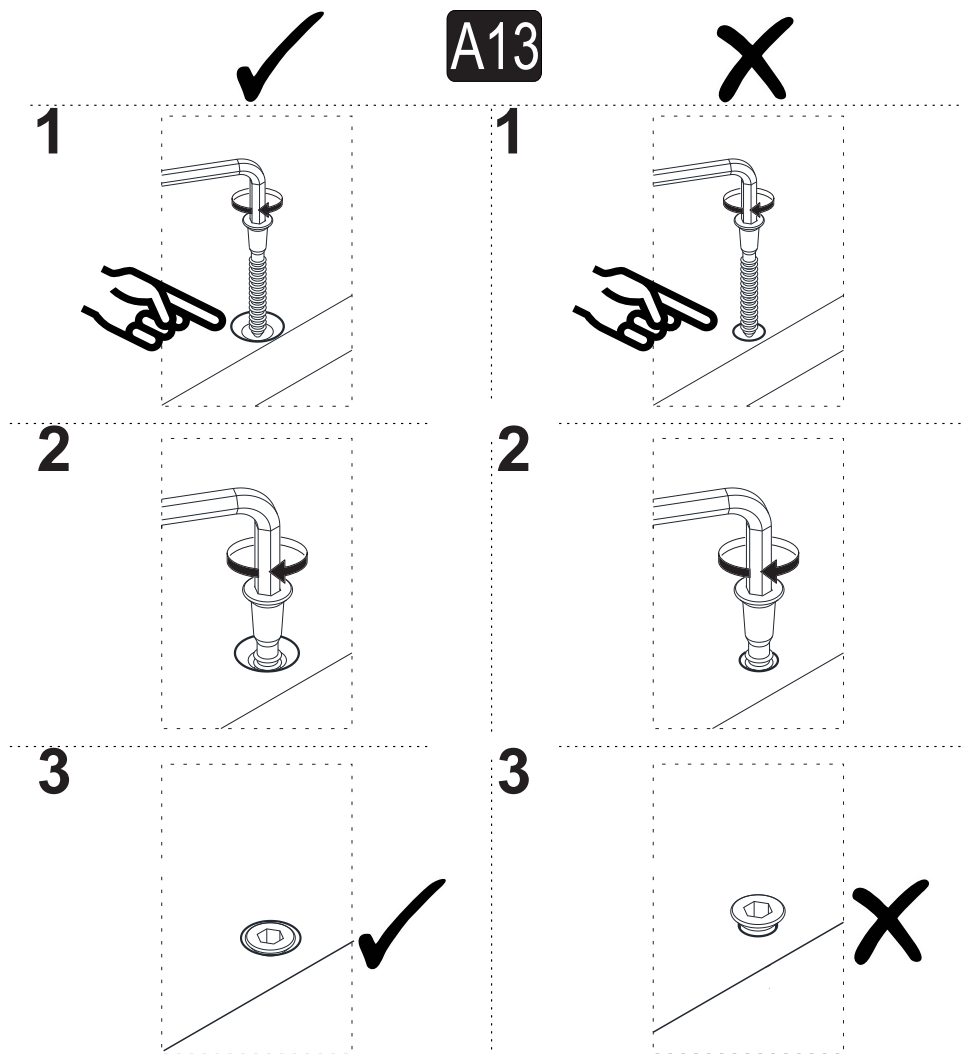


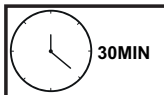
4



ATTENTION !!

Our products are screw system. Before you proceed with installation try to understand the following

















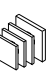





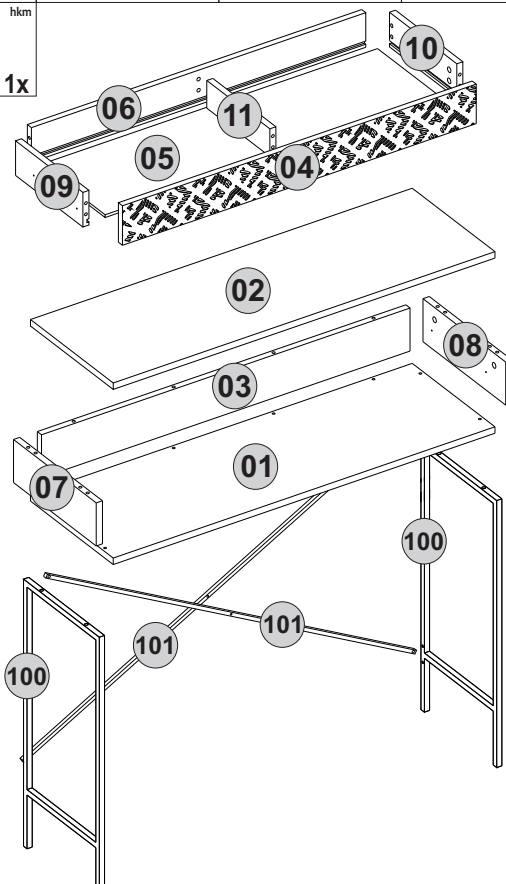
30MIN

Follow the installation steps in the order as shown.
Position the parts as shown in the installation guide steps.

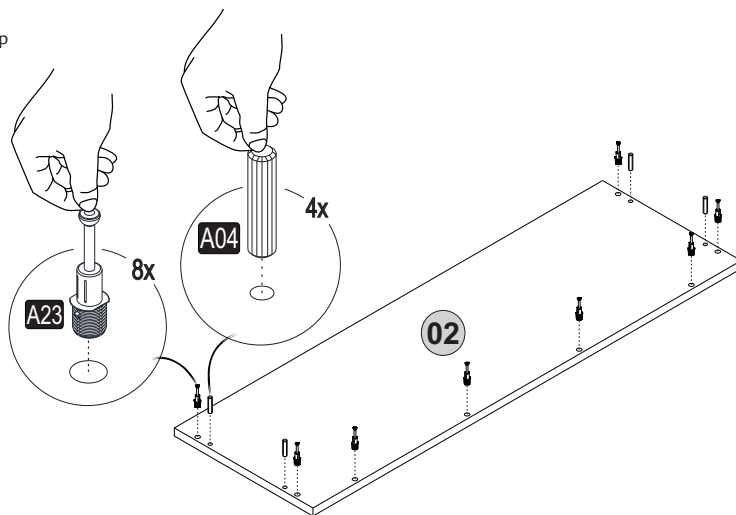


HARDWARE LIST

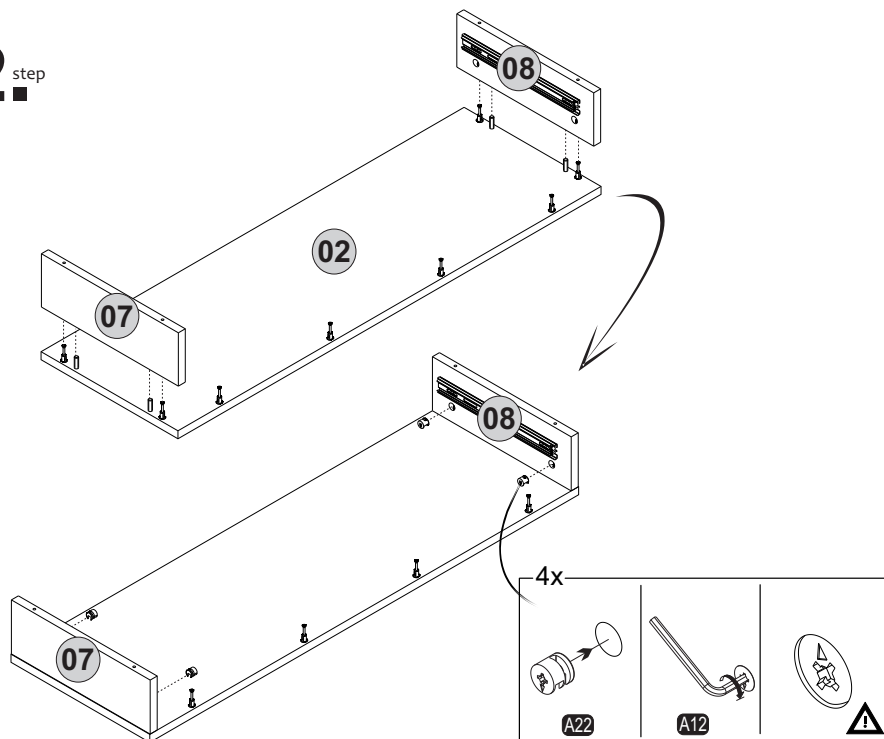
A22 Minifix k18  20x 50mm	A23 Minifix M10  20x P.D.	A04 Ø8  4x	A12 Allen  1x	A06 18mm  C1-28x 3,5x18
A13  8x	A69  4x	B13 25 (black)mm  4x	B15 15 (black)mm  4x	A18  8x
A25 ARK.PL  6x	A87 15x90x30  1x	A17 4x50  1x	A16 DbØ8  1x	Z21 15x15x18  4x
Z122  1x				A50 3,5x16 (Black)  2x
				Z51 K128mm (black)  1x



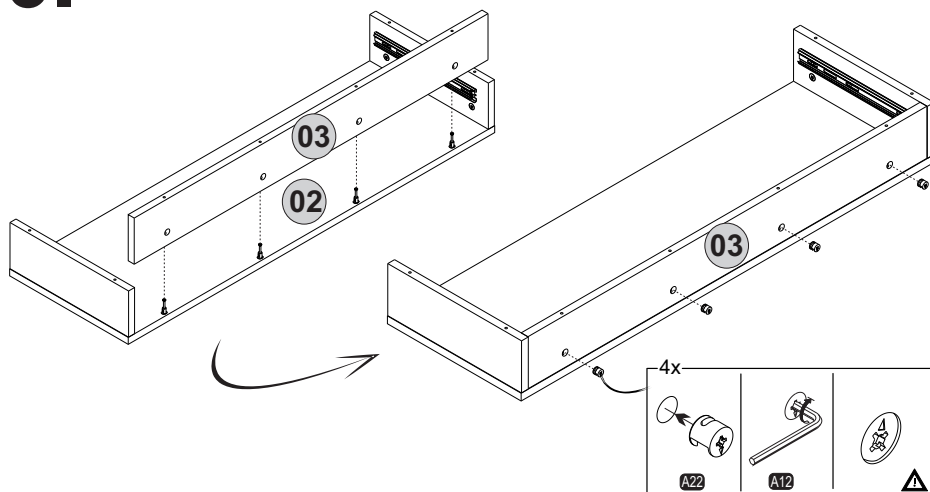
1. step



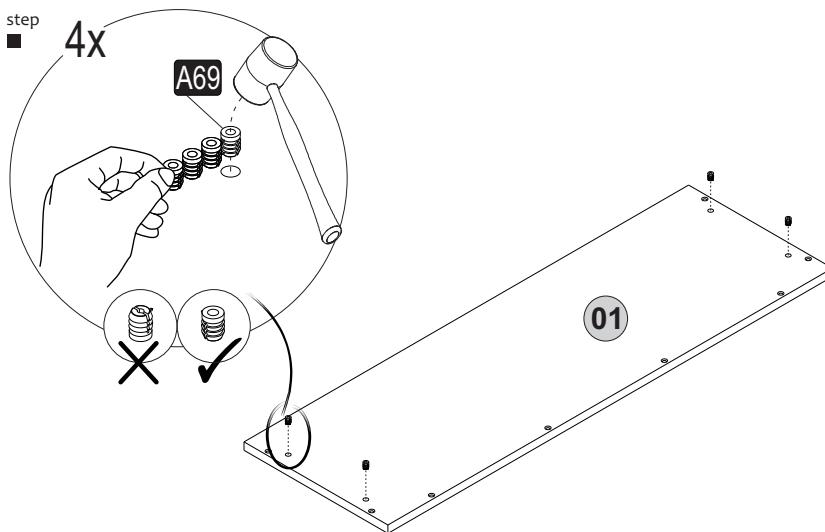
2. step



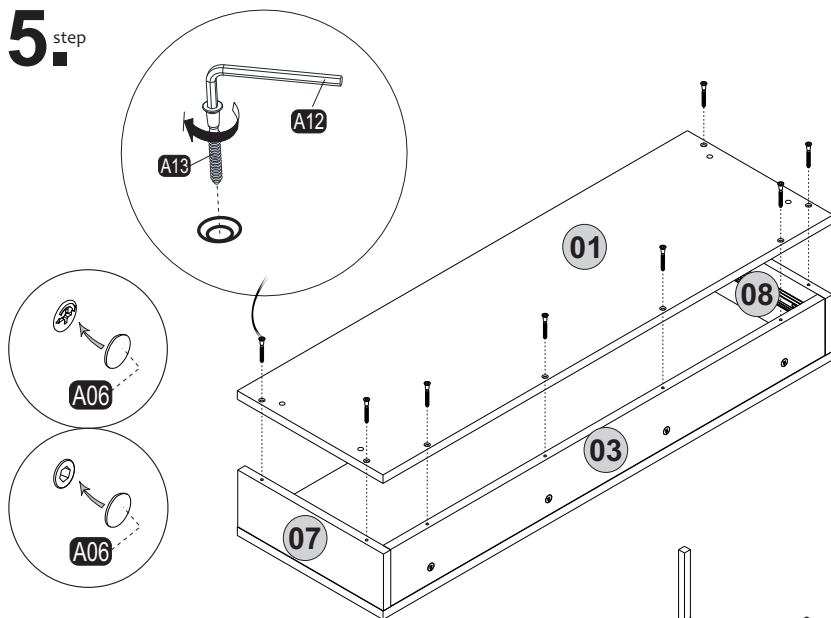
3. ^{step}



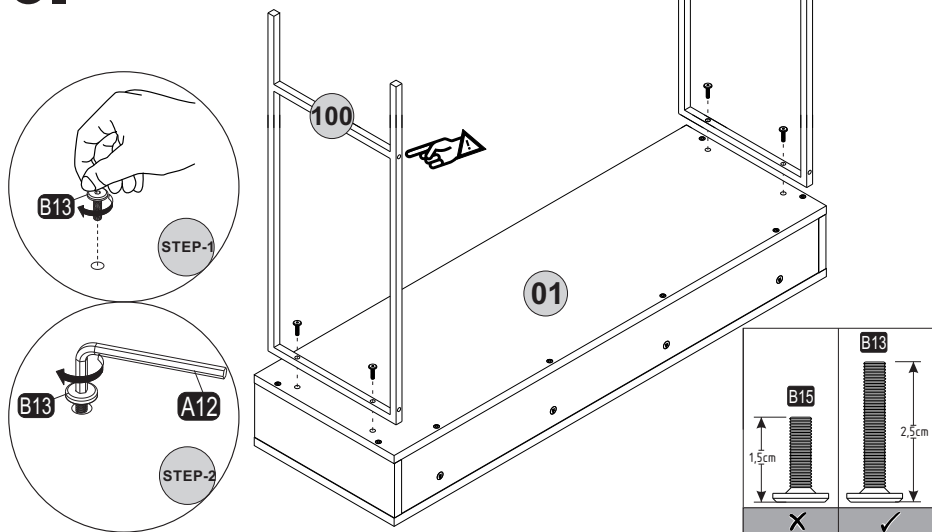
4. ^{step}



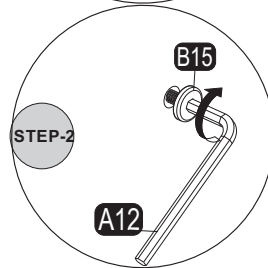
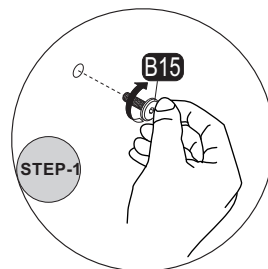
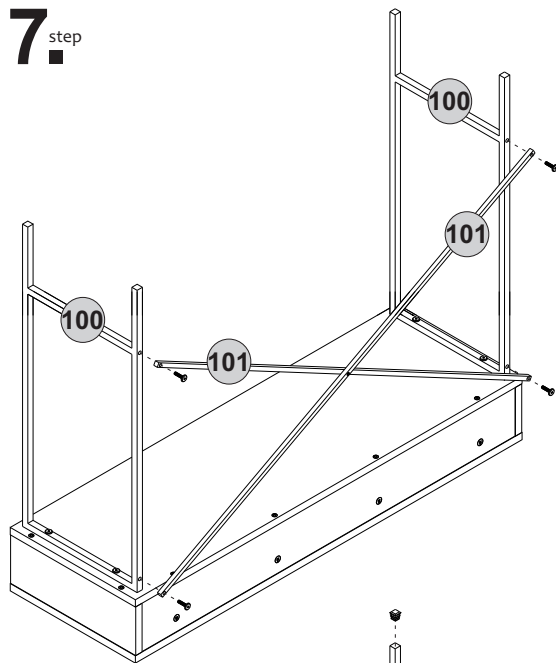
5_{step}



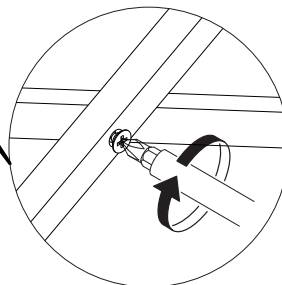
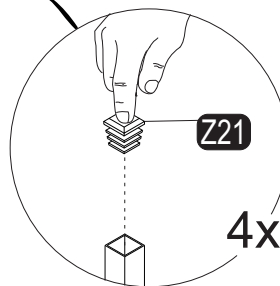
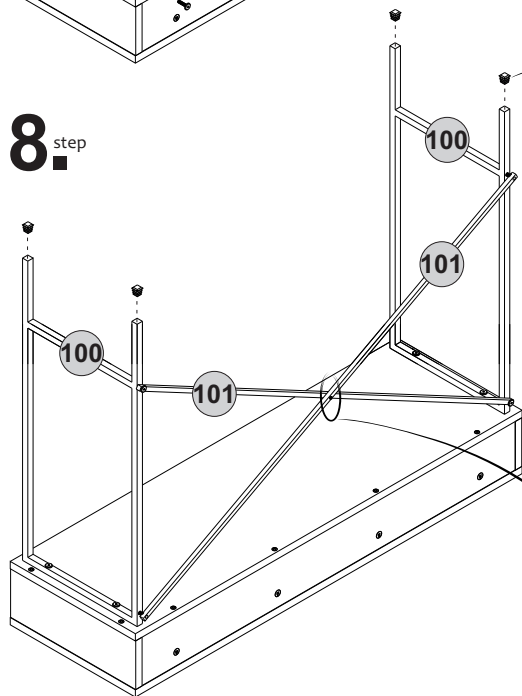
6^{step}



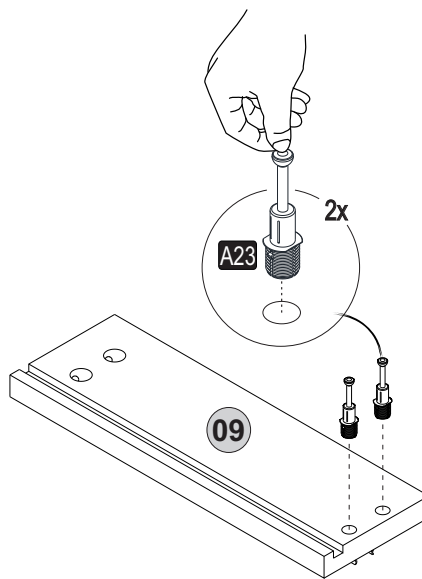
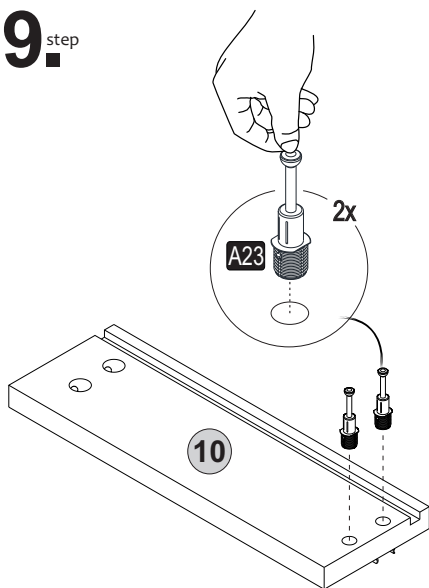
7.^{step}



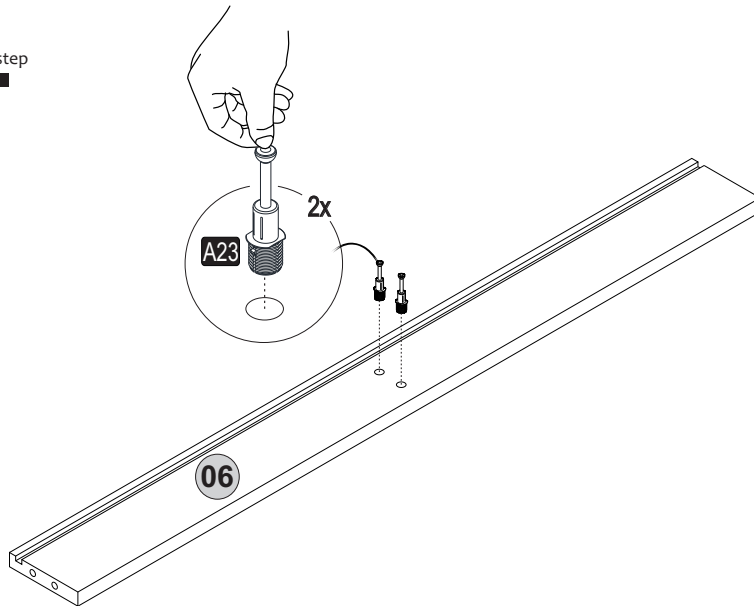
8.^{step}



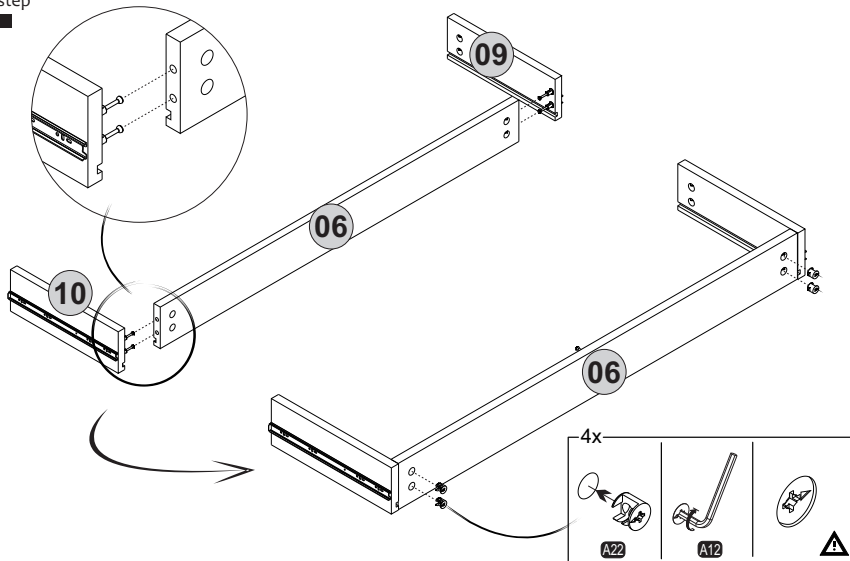
9._{step}



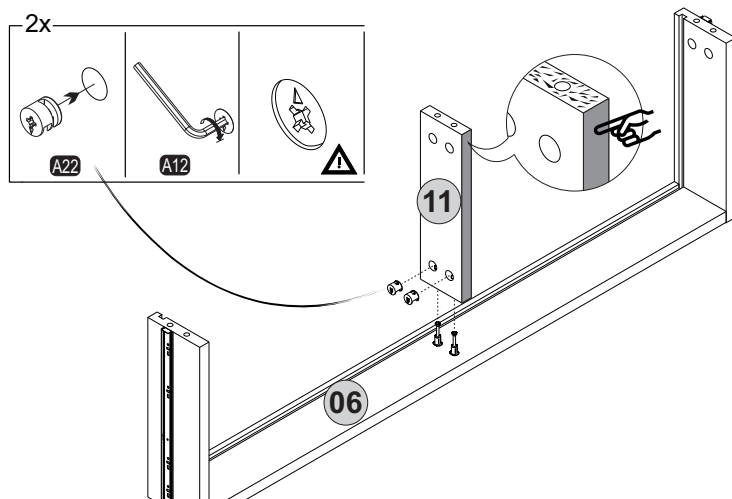
10._{step}



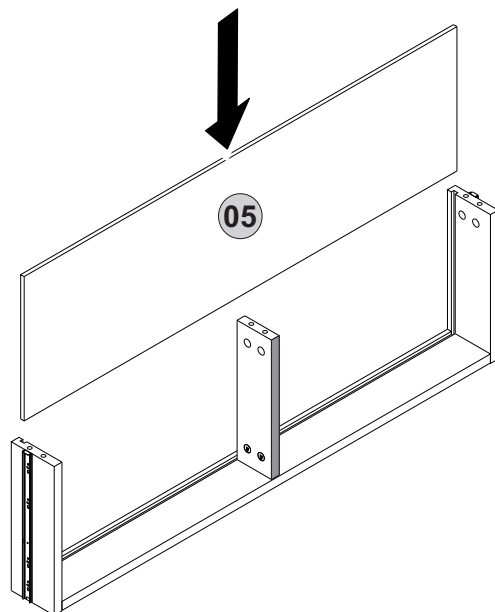
11.^{step}



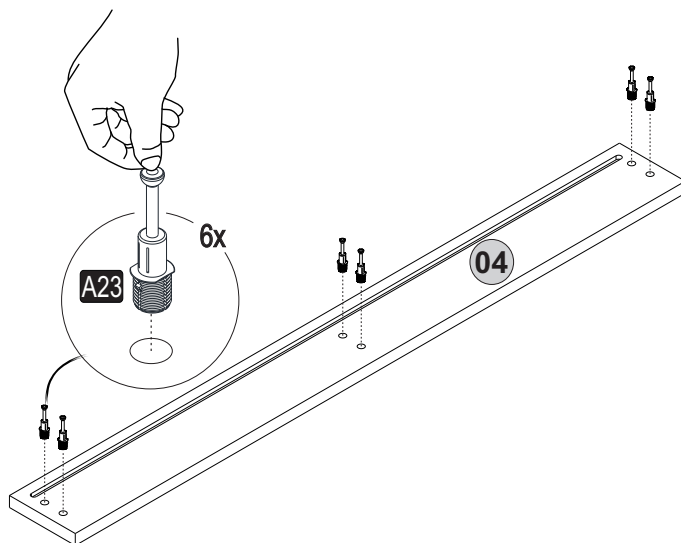
12.^{step}



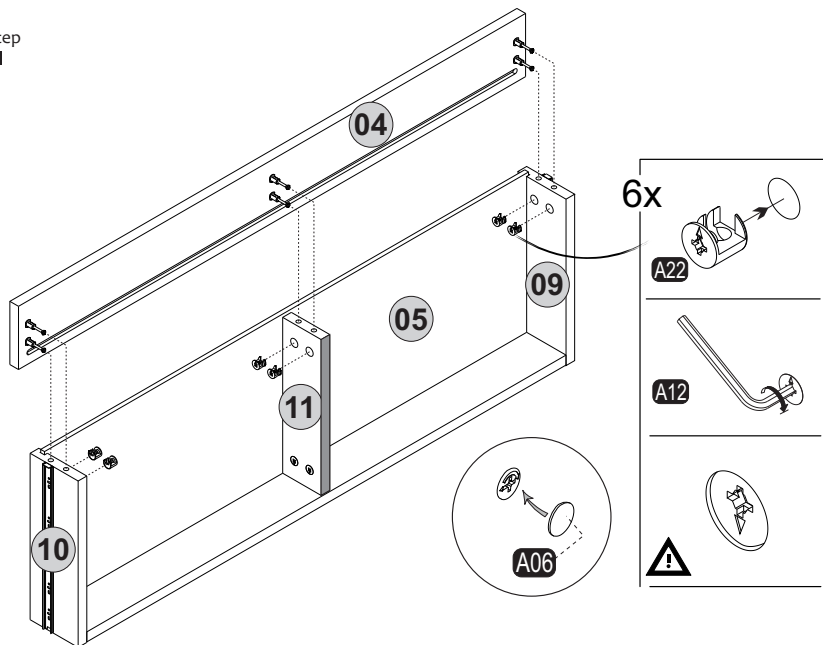
13._{step}



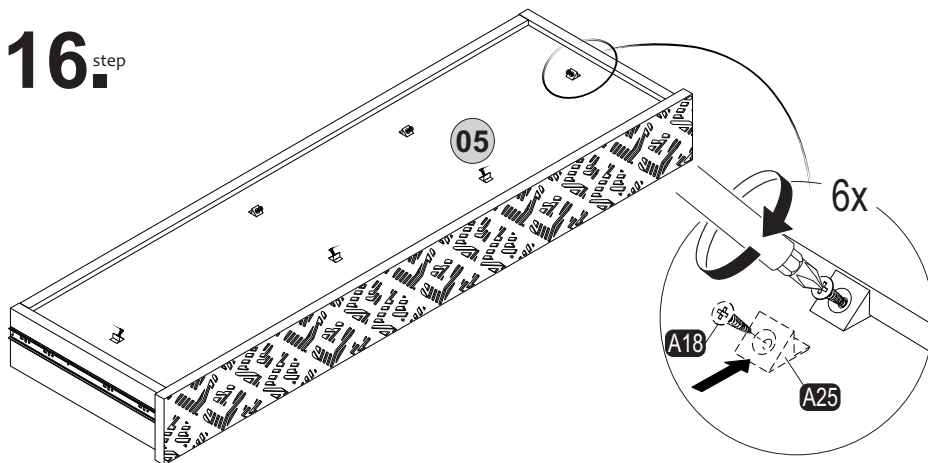
14._{step}



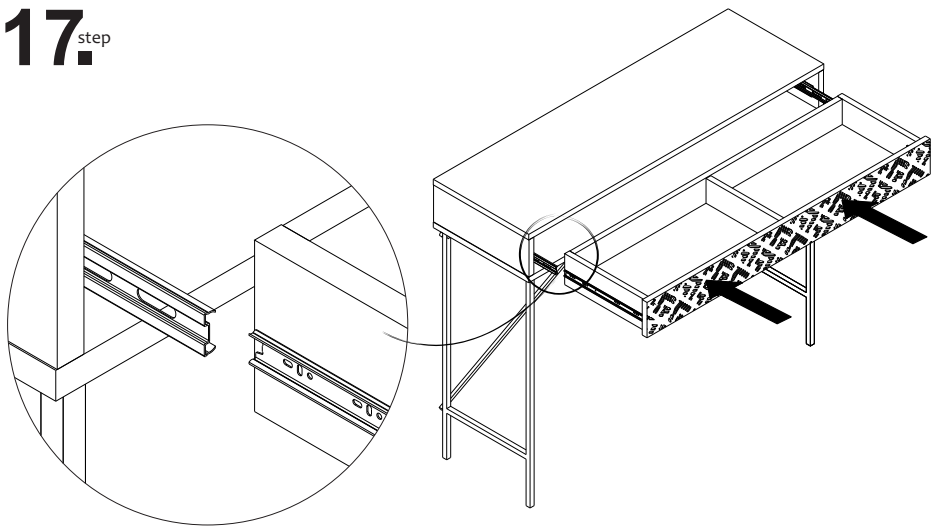
15.^{step}



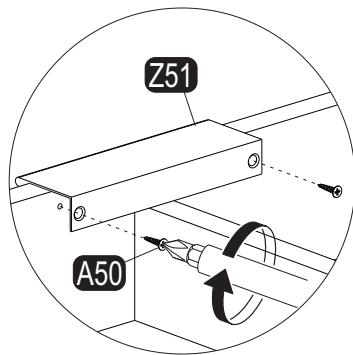
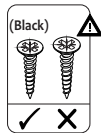
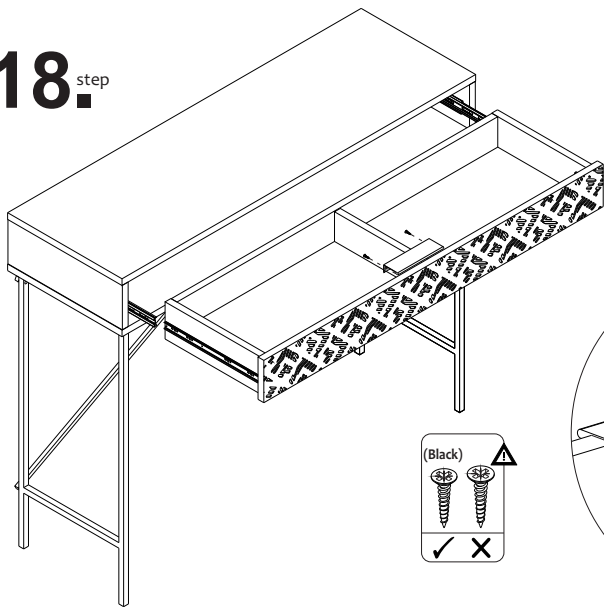
16.^{step}



17._{step}



18._{step}



19.^{step}

