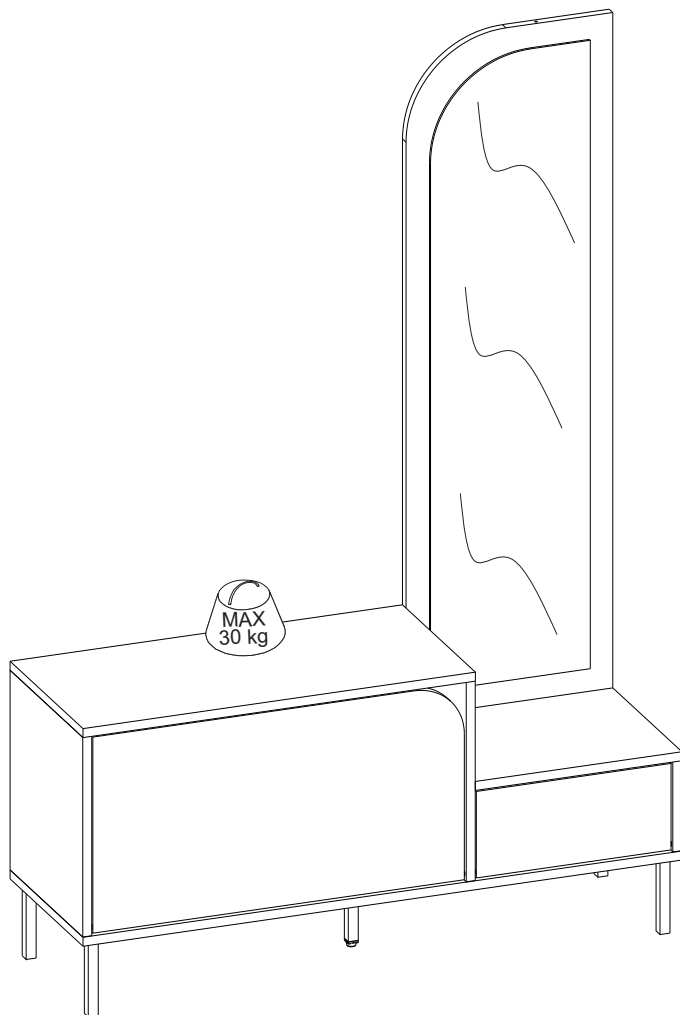


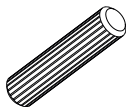
GP037-0201,2



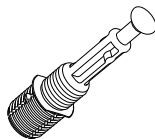
ATTENTION !!

Minifix is the main connection material used in our products.
Before starting assembly, please check the drawings below.

A04



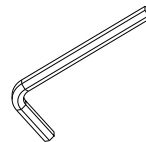
A23



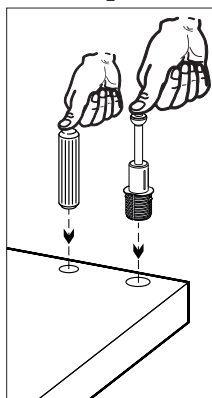
A22



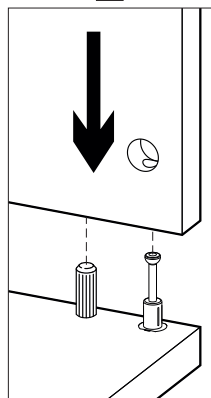
A12



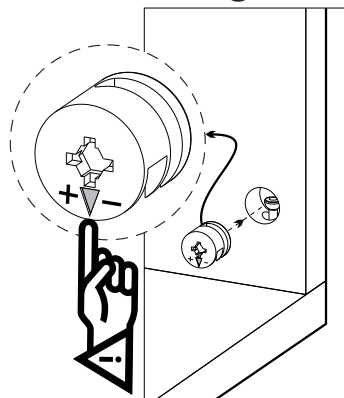
1



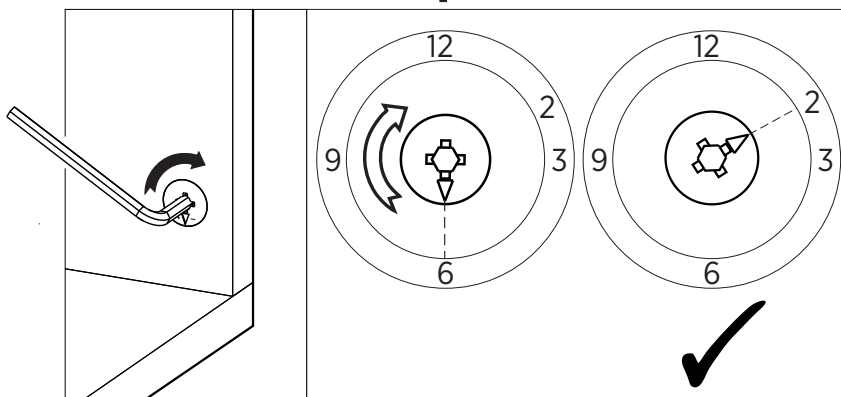
2



3

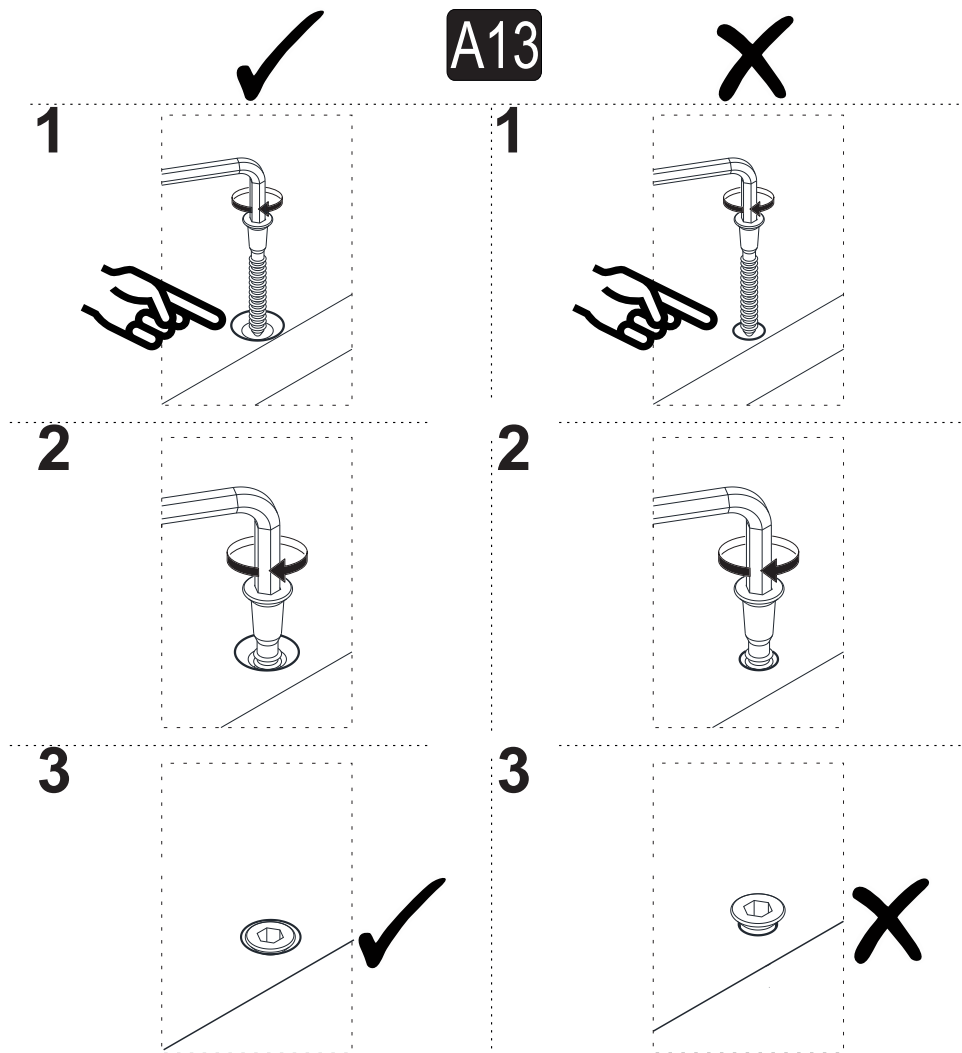


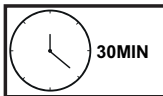
4



ATTENTION !!

Our products are screw system. Before you proceed with installation try to understand the following










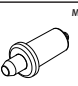


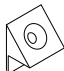

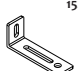



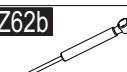
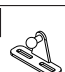
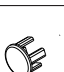
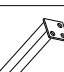

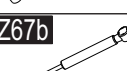






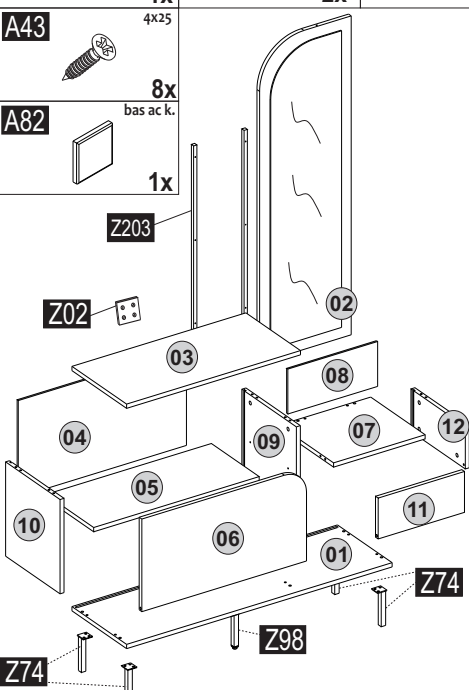





30MIN

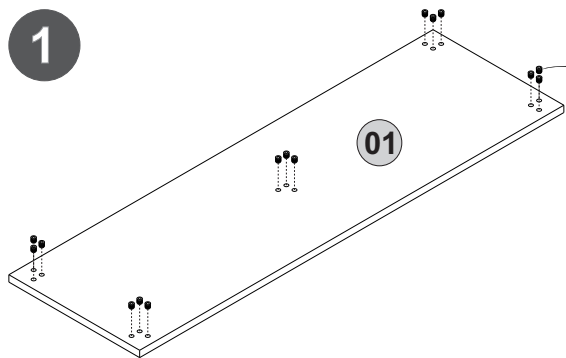
Follow the installation steps in the order as shown.
Position the parts as shown in the installation guide steps.



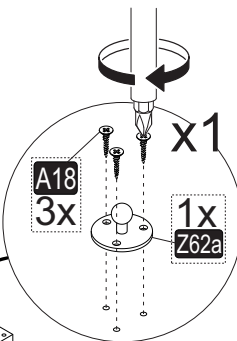
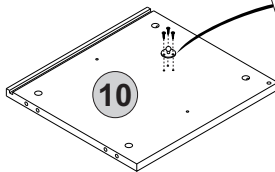
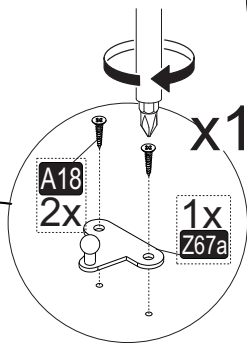
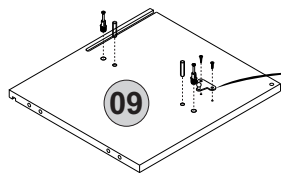
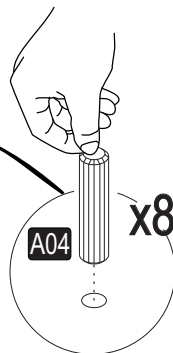
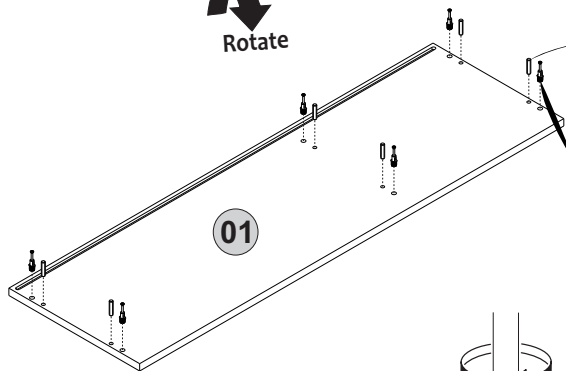
HARDWARE LIST

A22 Minifix k18  16x 4x50	A23 Minifix M10  16x 3,5x18	A04 Ø8x30  16x	A12 Allen  1x	A06 18mm  C1-16x P.D.
A17  1x	A18  26x	A65 M11 Montesa  4x	A96 MCP  1x	A69  15x
A25 ARK.PL  8x	A48 Raf Piml  4x	A89 15x18x50  1x	A16 DbØ8  1x	B15 15 (black)mm  15x
Z62a DKP  1x	Z62b DKP  1x	Z62c DKP  1x	Z62d DKP  2x	Z74 A.M.A.S  4x
Z67a DKP  1x	Z67b DKP  1x	Z67c DKP  1x	Z67d DKP  2x	Z98 AMA 150mm  1x
Z158 MÇCK galvaniz  1x	A80 bas ac  1x	A43 4x25  8x		
Z02 Bd  1x	Z203 Ym.Bm  1x	A82 bas ac k.  1x		

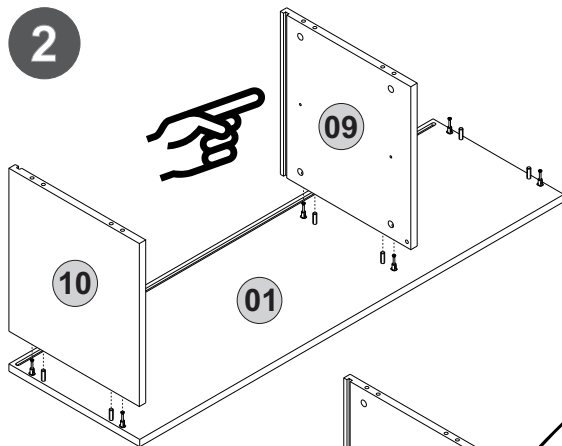
1



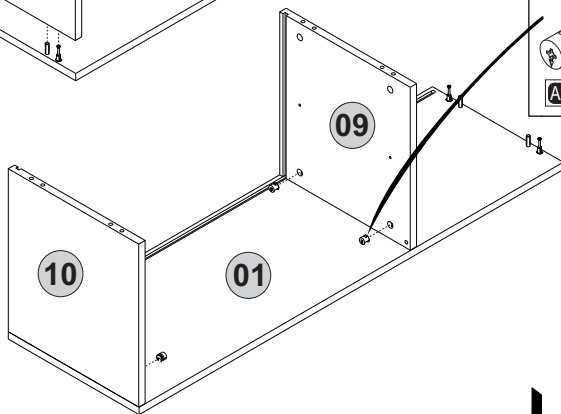
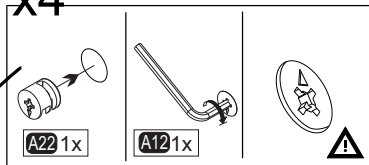
Rotate



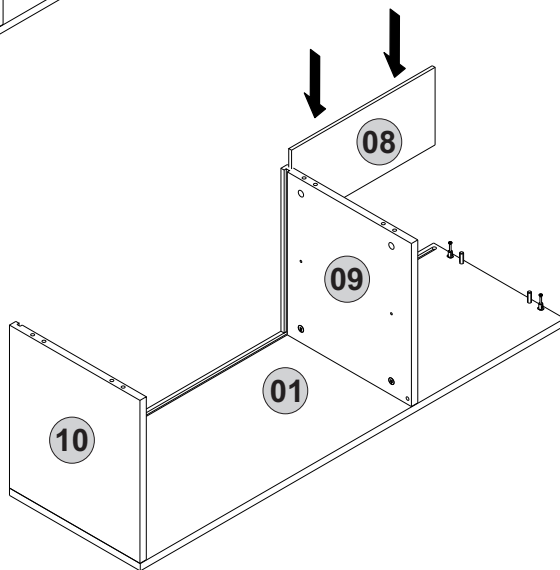
2



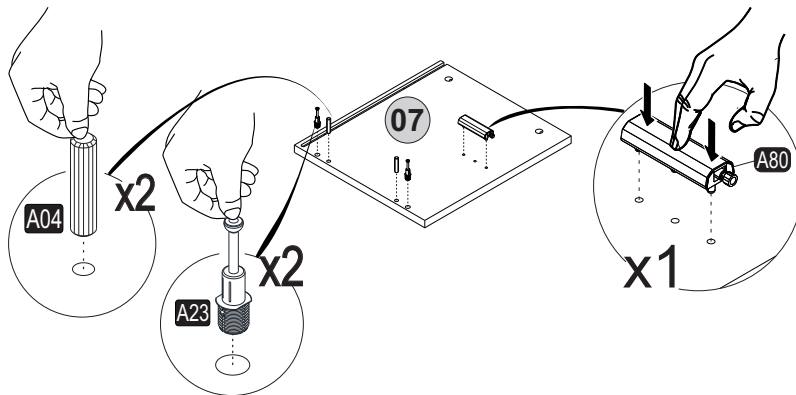
x4



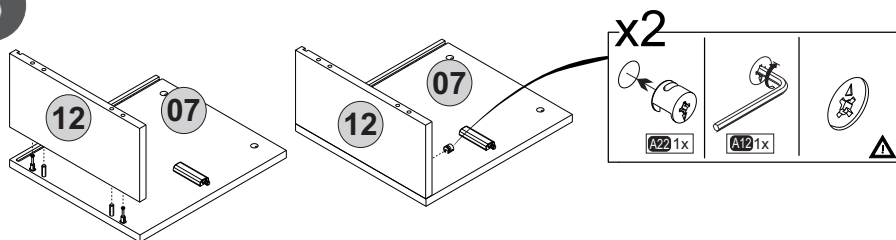
3



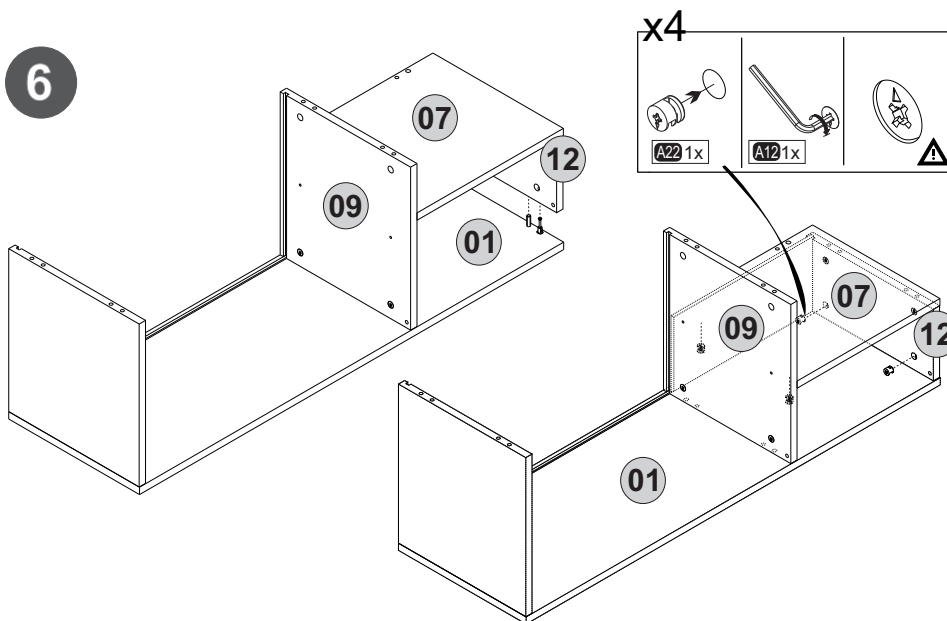
4



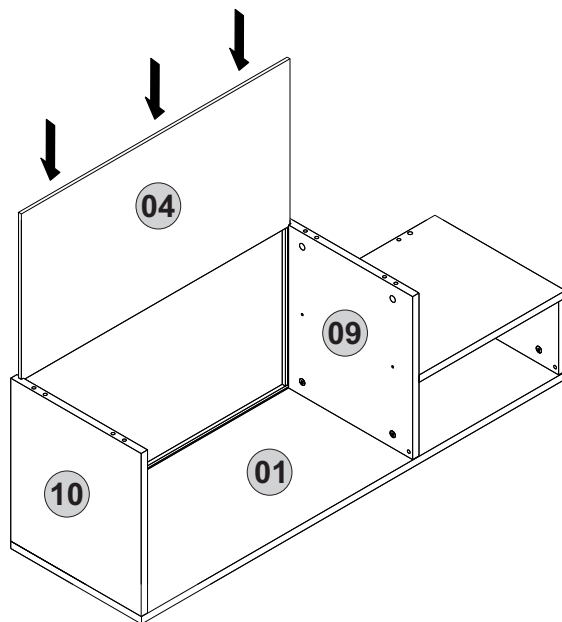
5



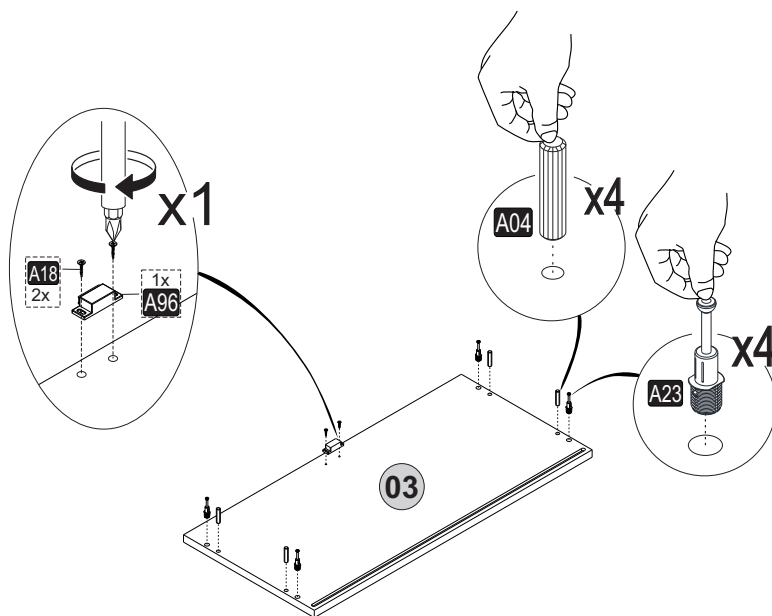
6

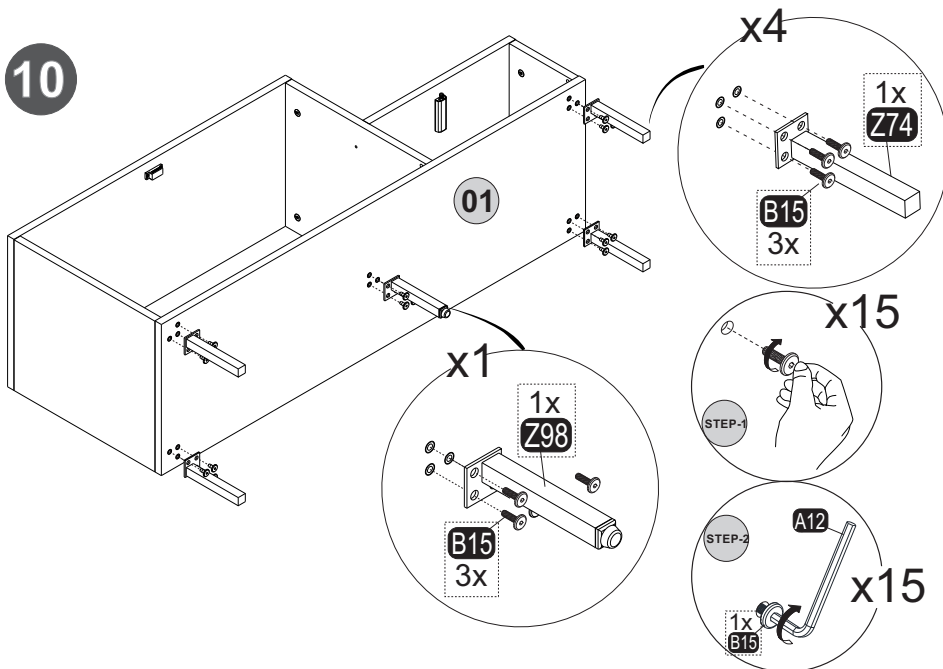
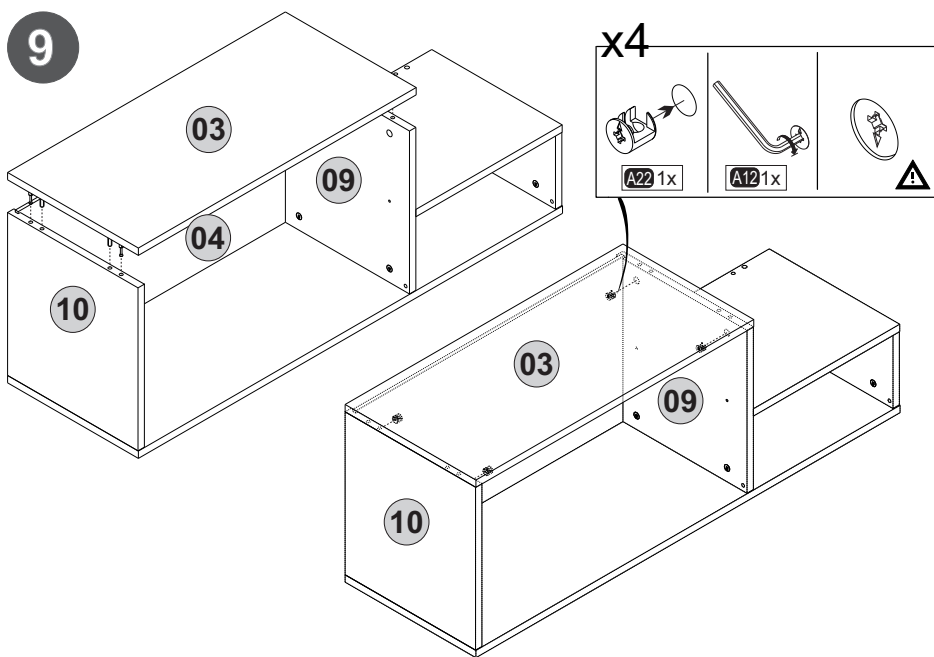


7

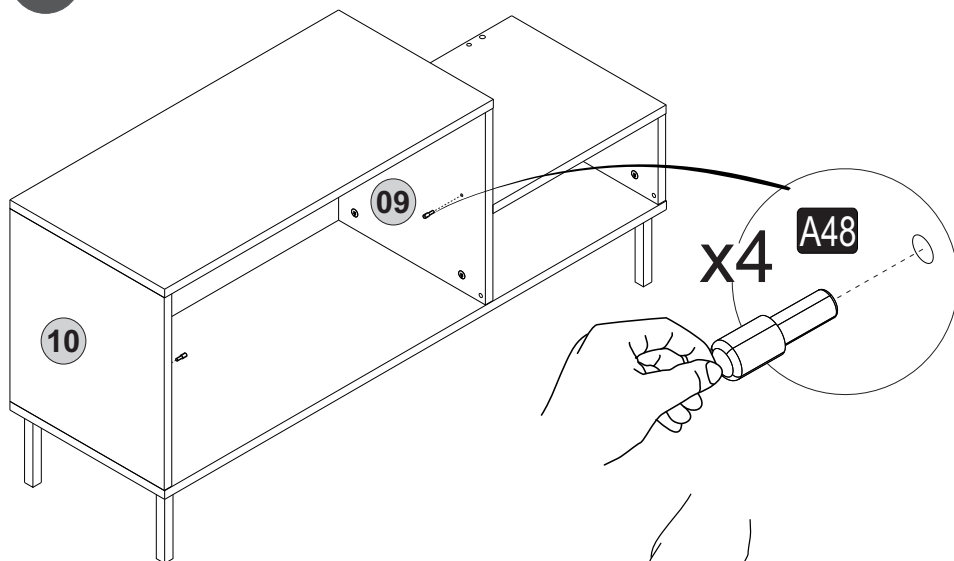


8

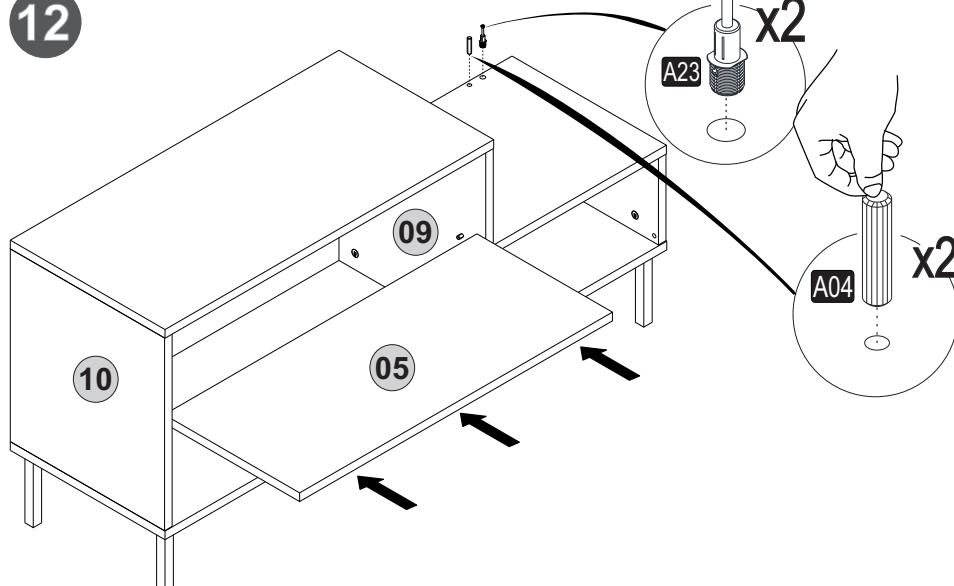




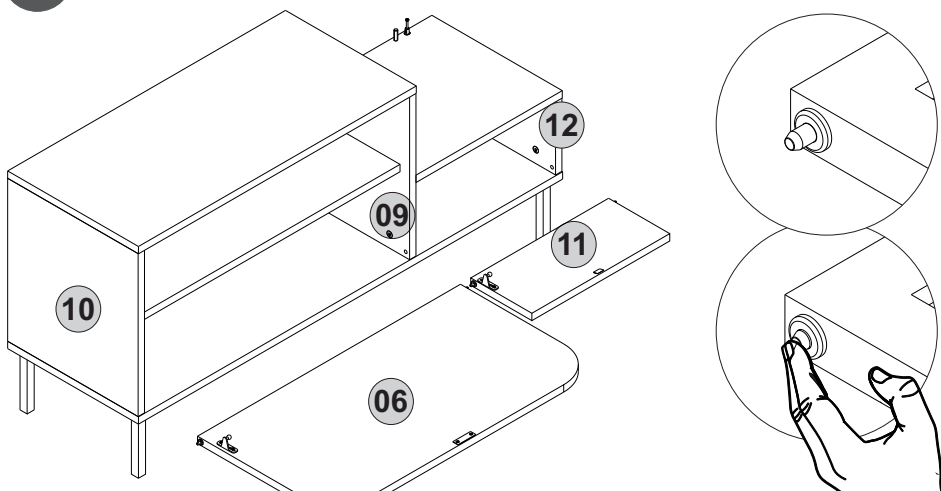
11



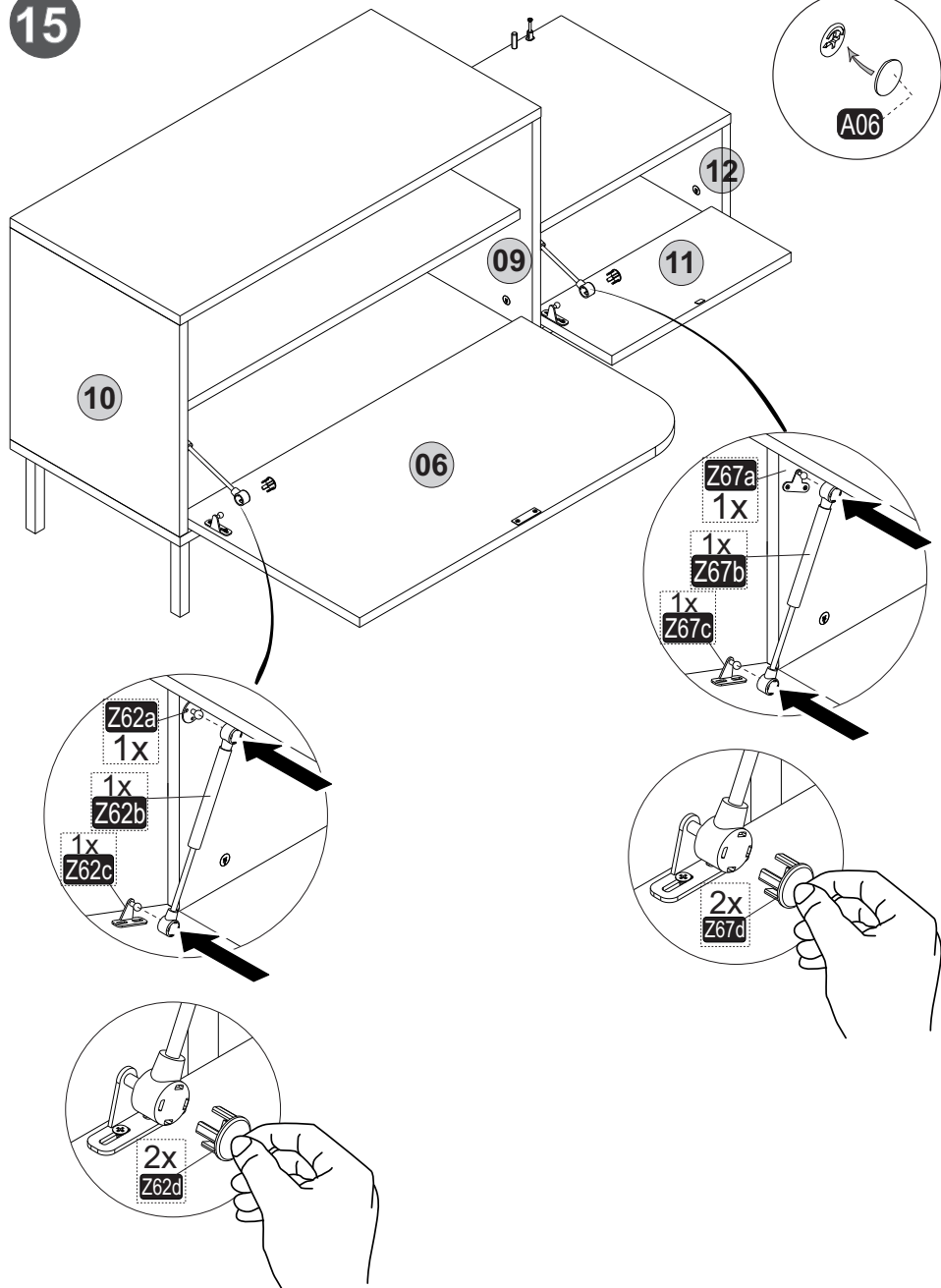
12



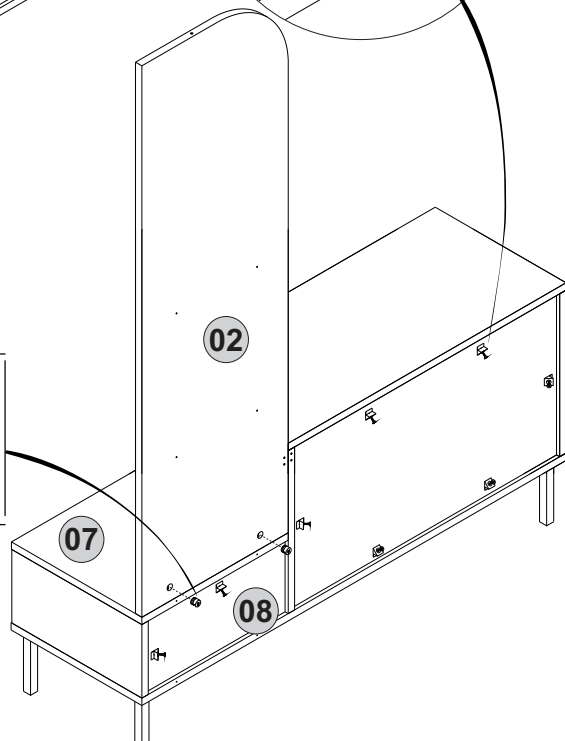
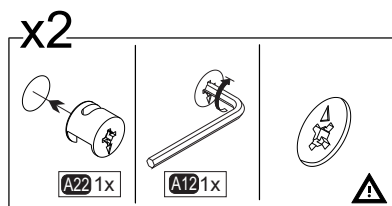
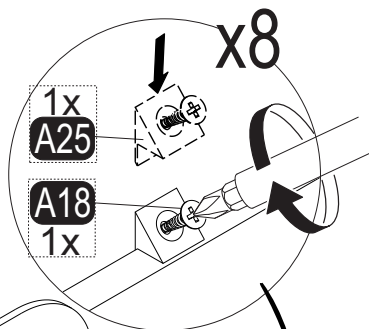
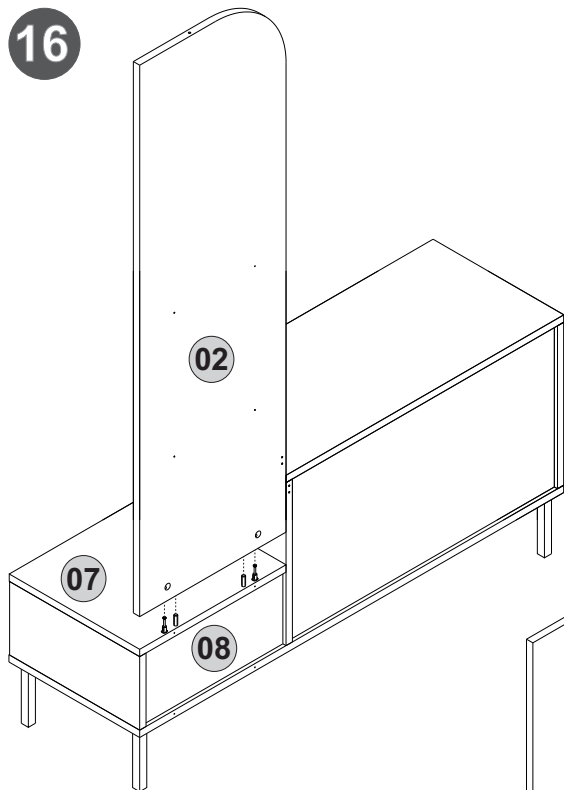
13



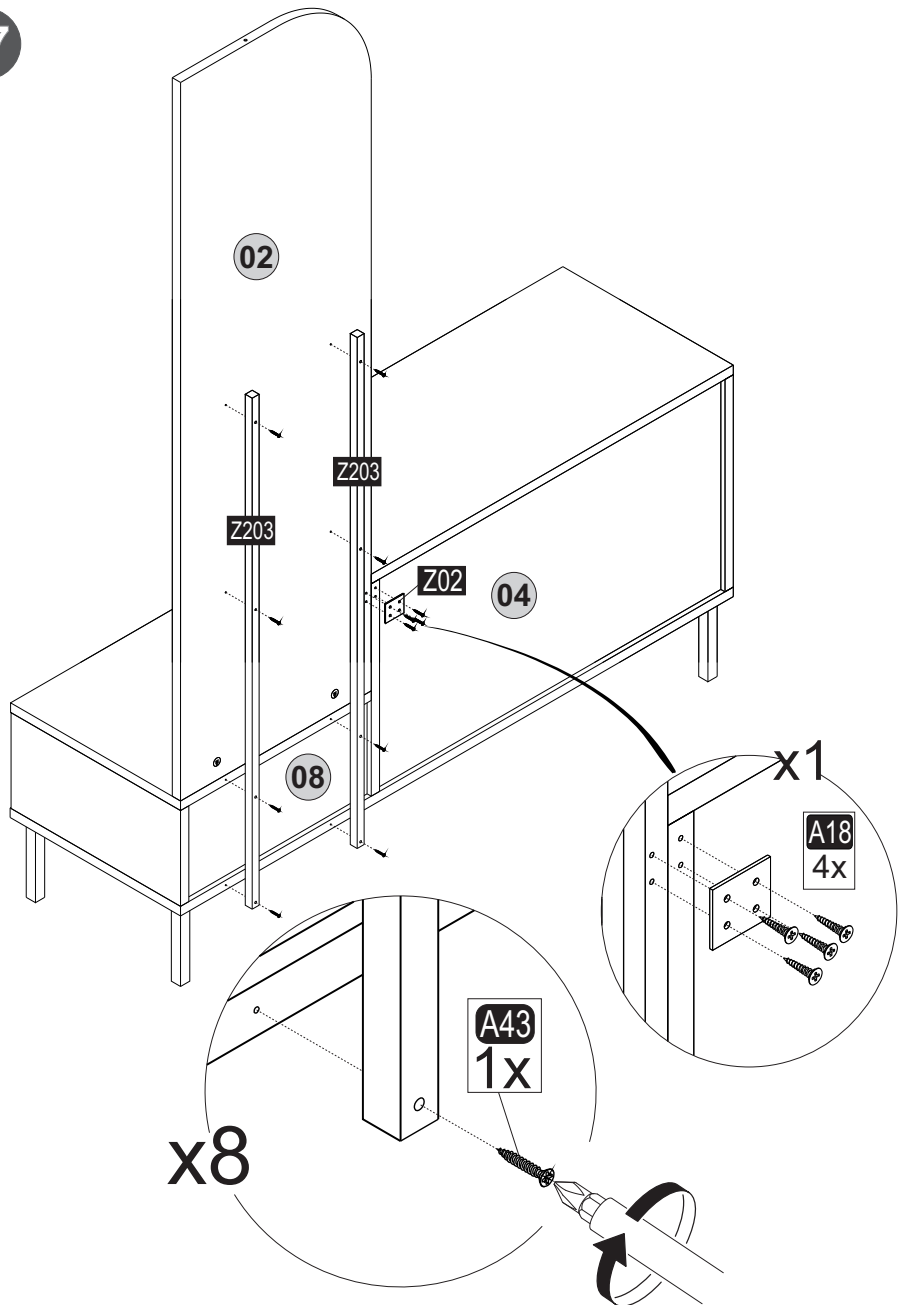
15



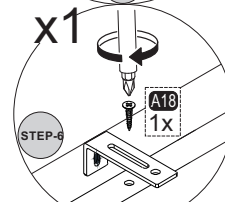
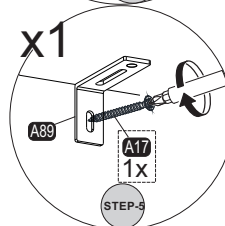
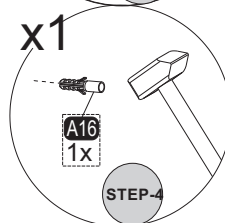
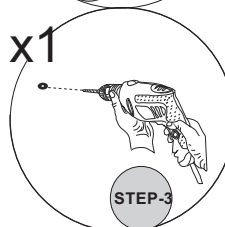
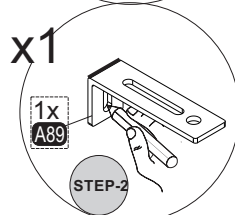
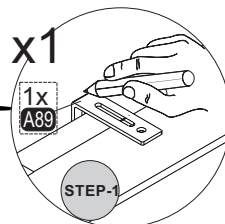
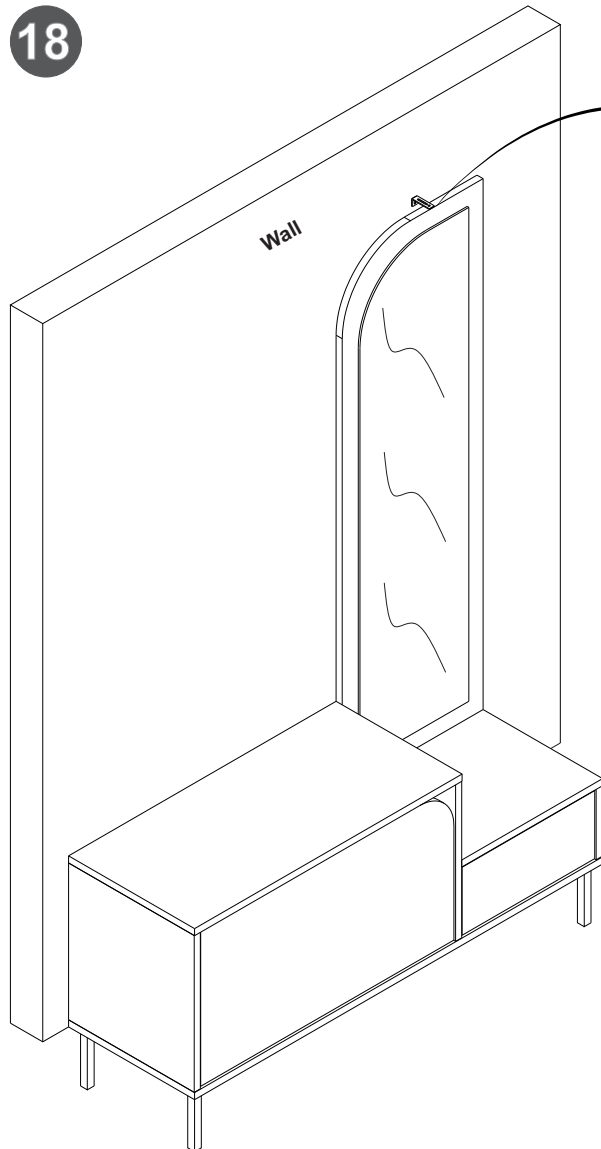
16

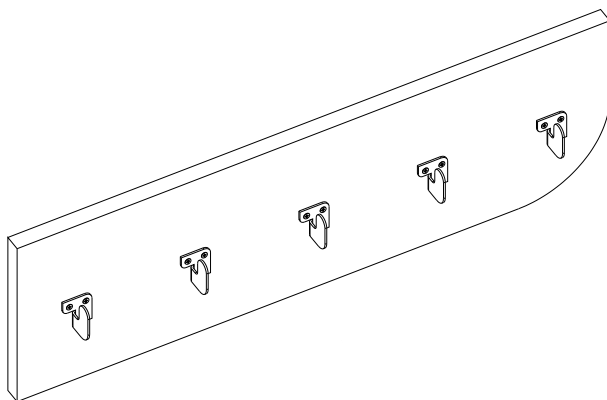


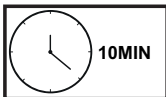
17



18








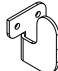


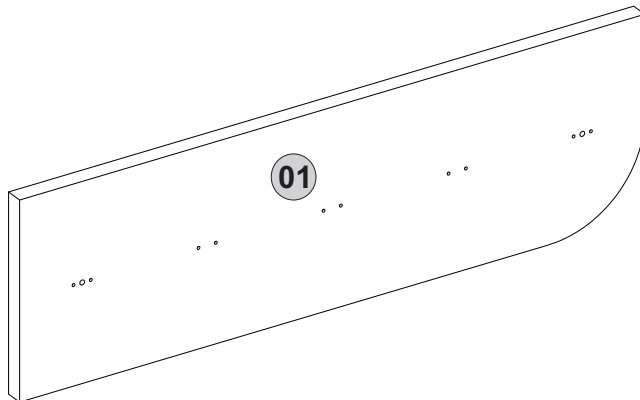
10MIN

Follow the installation steps in the order as shown.
Position the parts as shown in the installation guide steps.

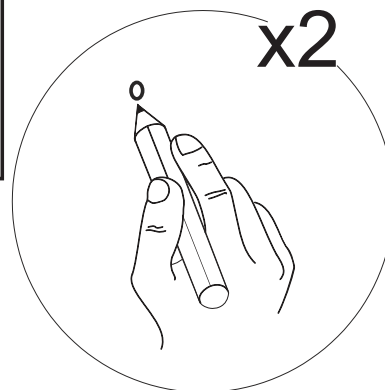
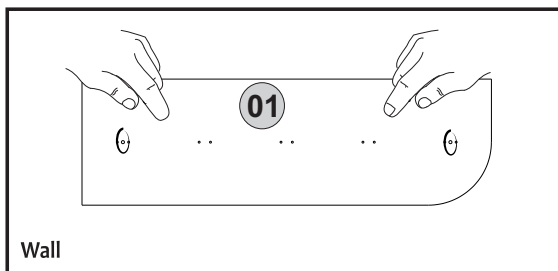


HARDWARE LIST

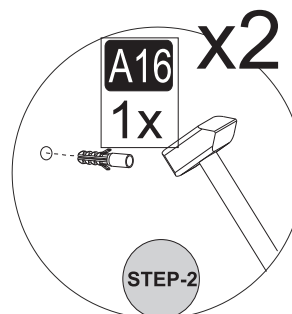
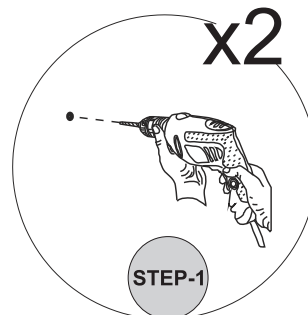
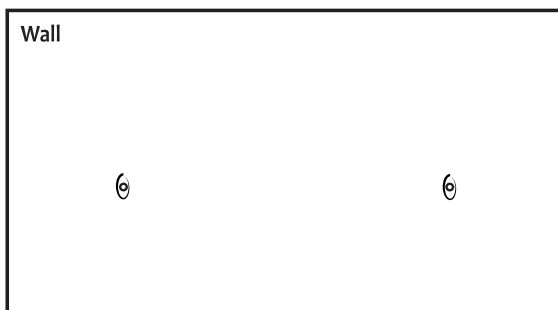
A50  10x	3,5x16 (Black) A33  2x	4x60 A16  2x	DbØ8 Z153  5x
--	--	---	--



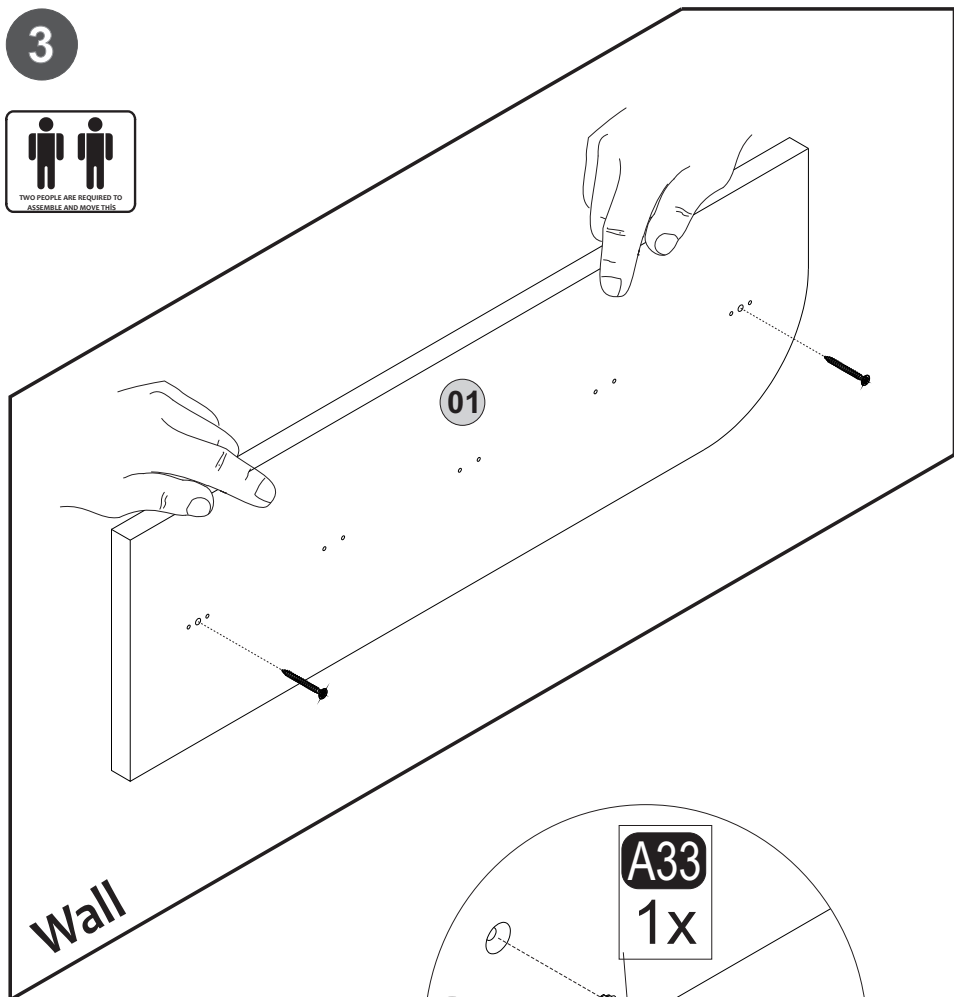
1



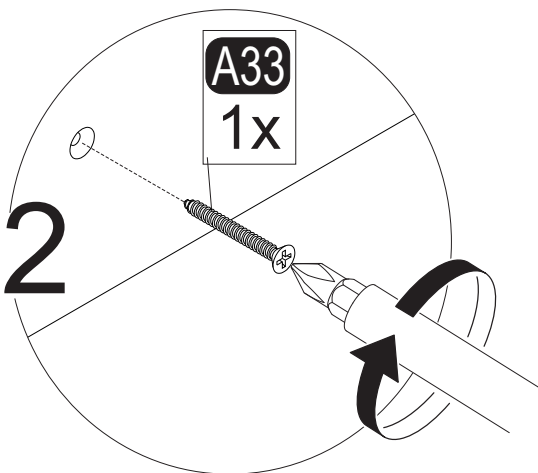
2



3



x2



4

