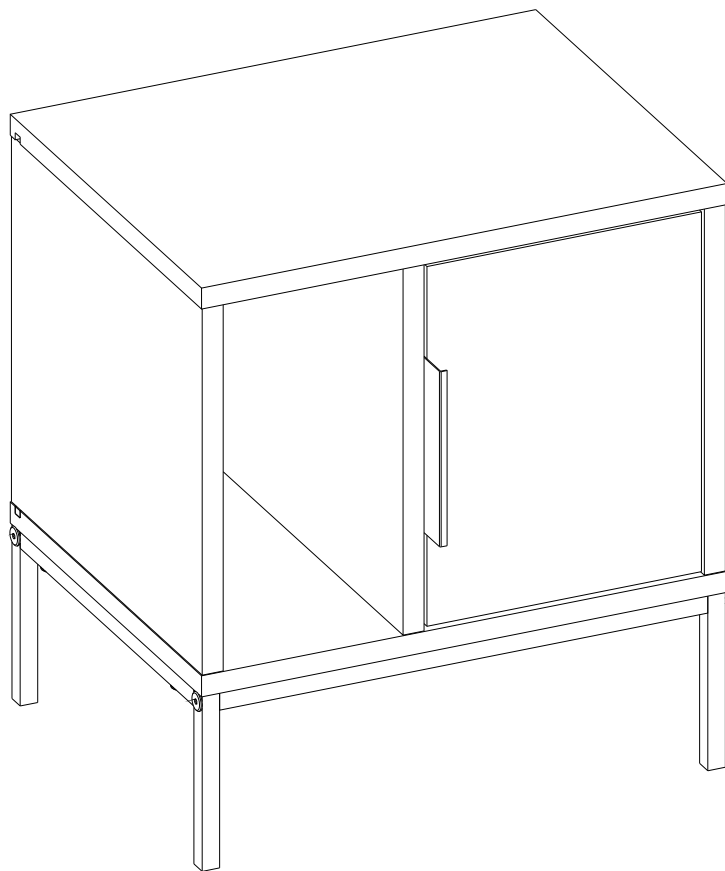


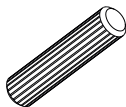
GP037-0233,1



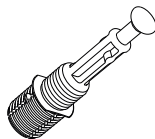
ATTENTION !!

Minifix is the main connection material used in our products.
Before starting assembly, please check the drawings below.

A04



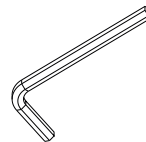
A23



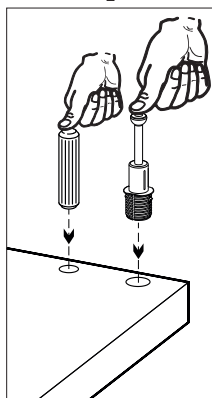
A22



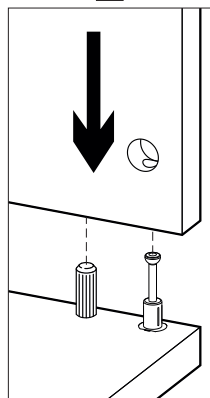
A12



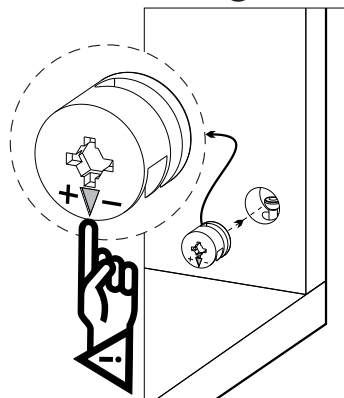
1



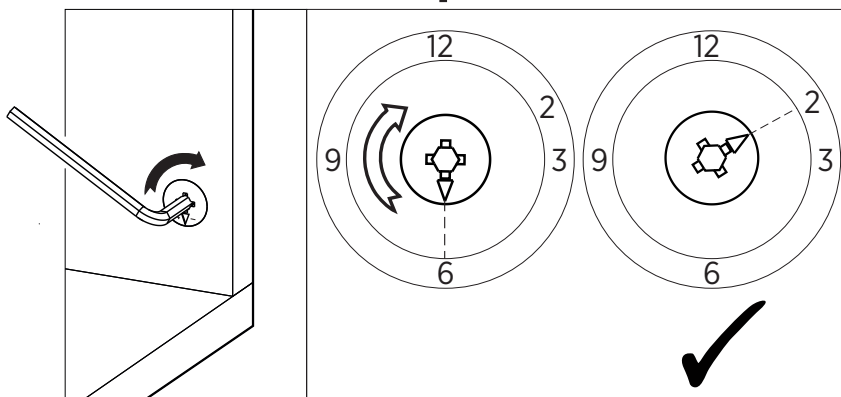
2



3

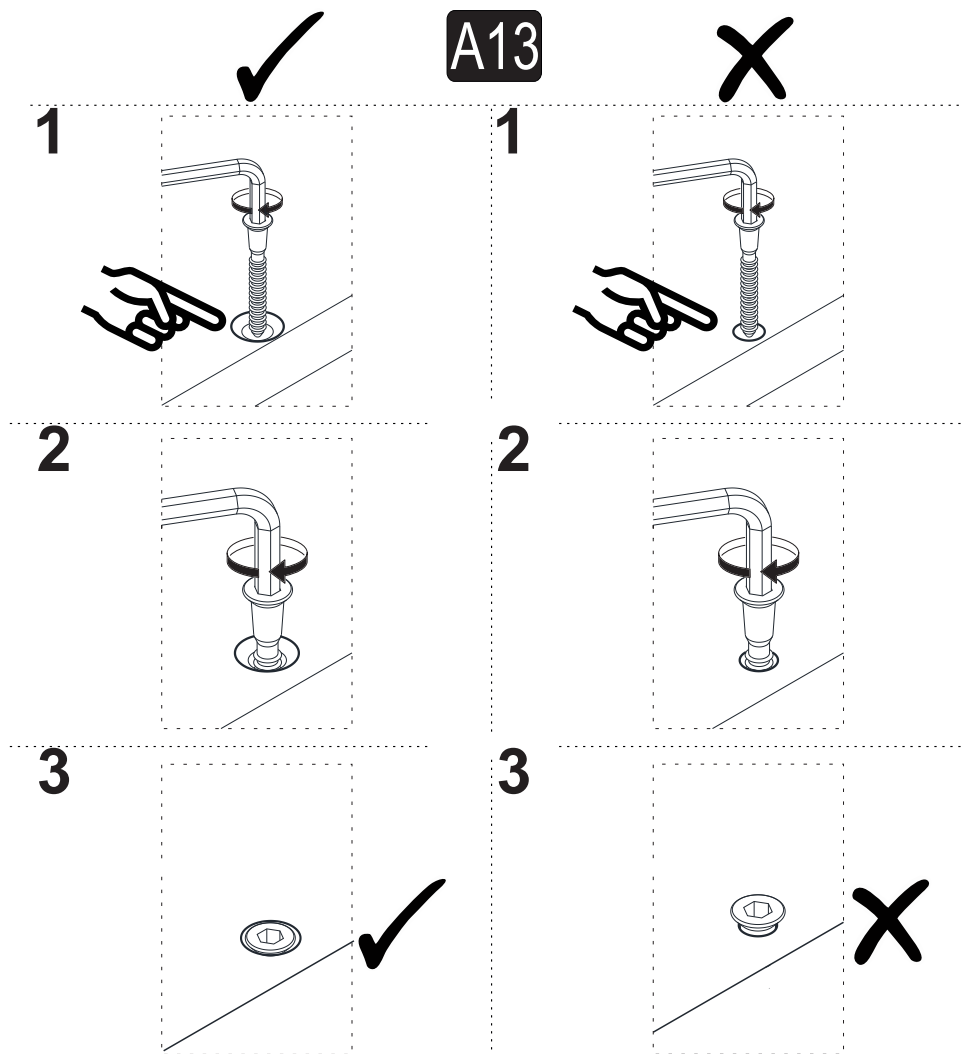


4



ATTENTION !!

Our products are screw system. Before you proceed with installation try to understand the following








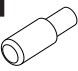







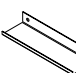



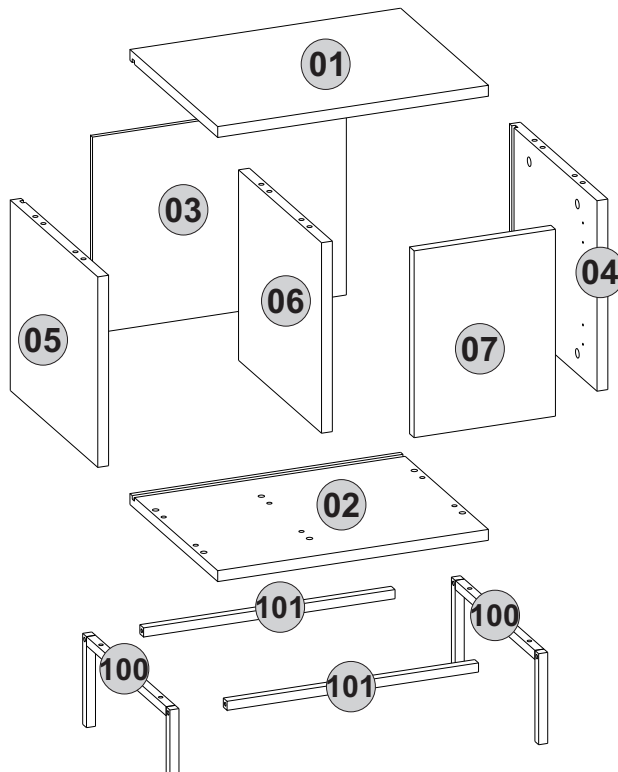


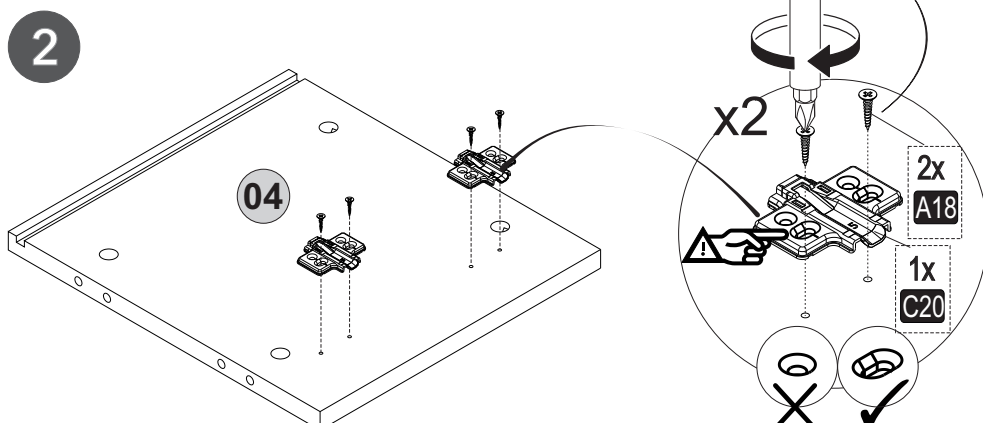
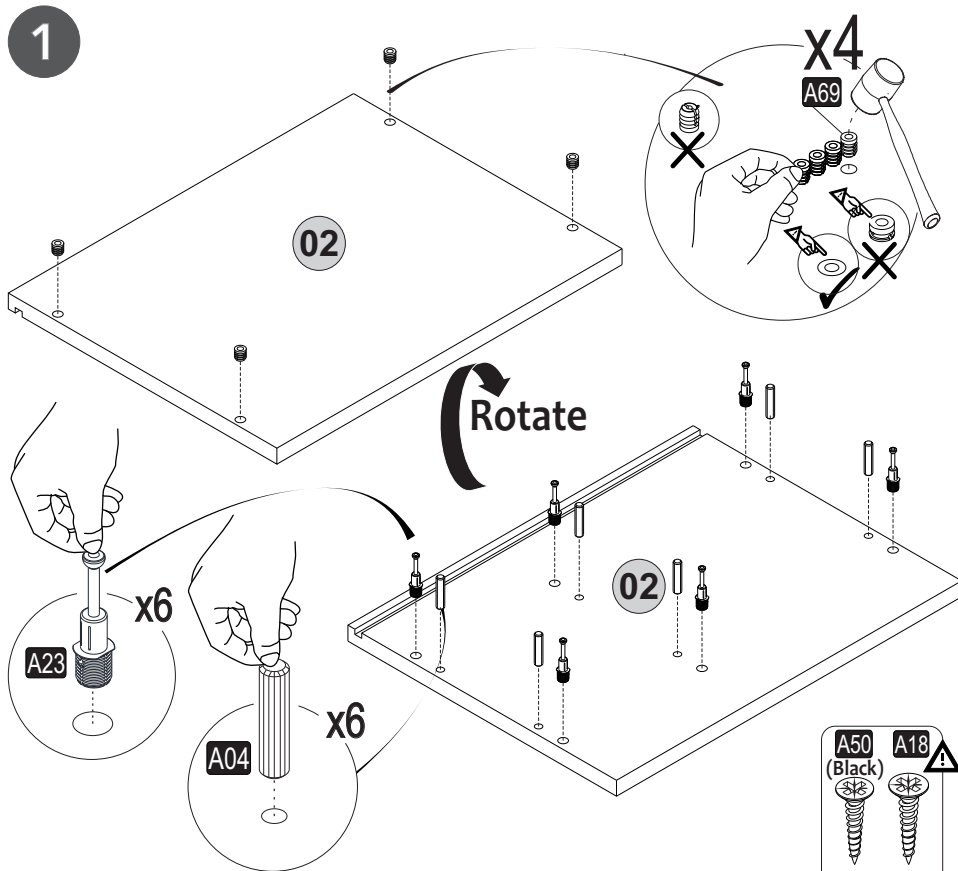
Follow the installation steps in the order as shown.
Position the parts as shown in the installation guide steps.



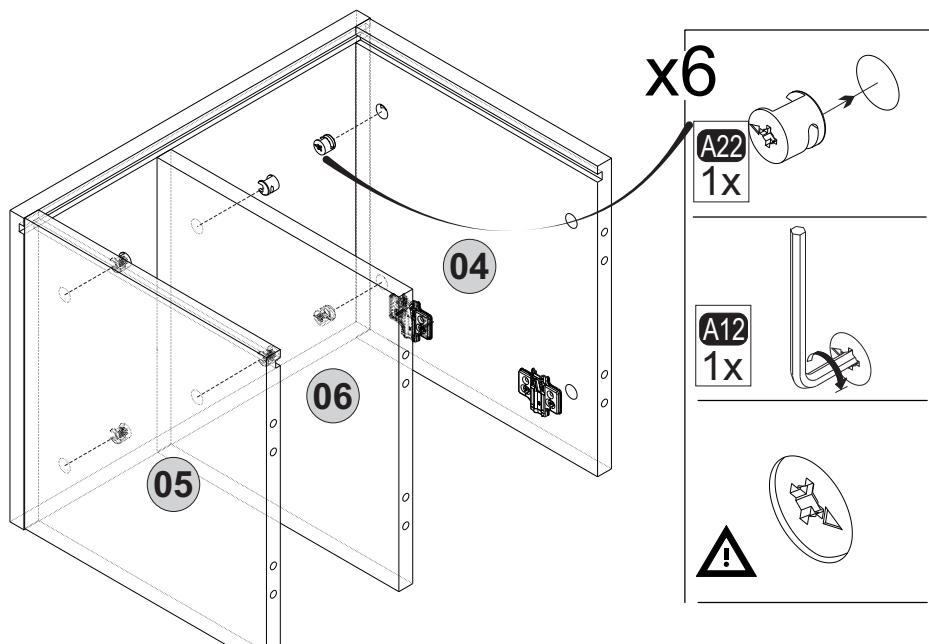
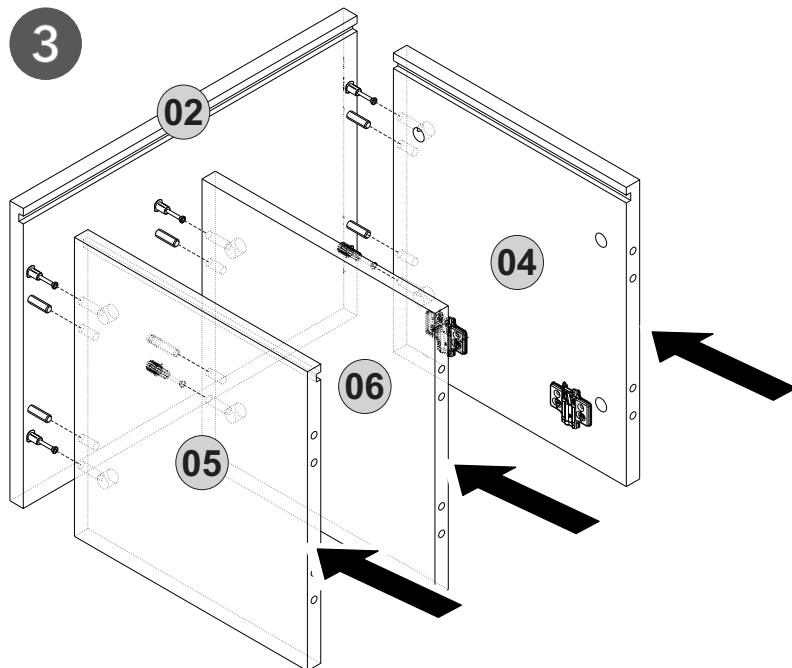
HARDWARE LIST

A04 Ø8x30  12x	A06 18mm  12x	A12 Allen  1x	A18 3,5x18  16x	A22 Minifix k18  12x
A23 Minifix M10  12x	A25 ARK.PL  4x	A48 Raf Pim  1x	A50 3,5x16 (Black)  2x	A69 P.D.  4x
B13 25 (black)mm  8x	C16 Sdb(S)  1x	C19 SdbF(S)  1x	C20 Mtk(S)  2x	Z21 15x15x18  4x
Z51 K128mm (black)  1x	Z152 G.K.M.T  100-2x 101-2x			



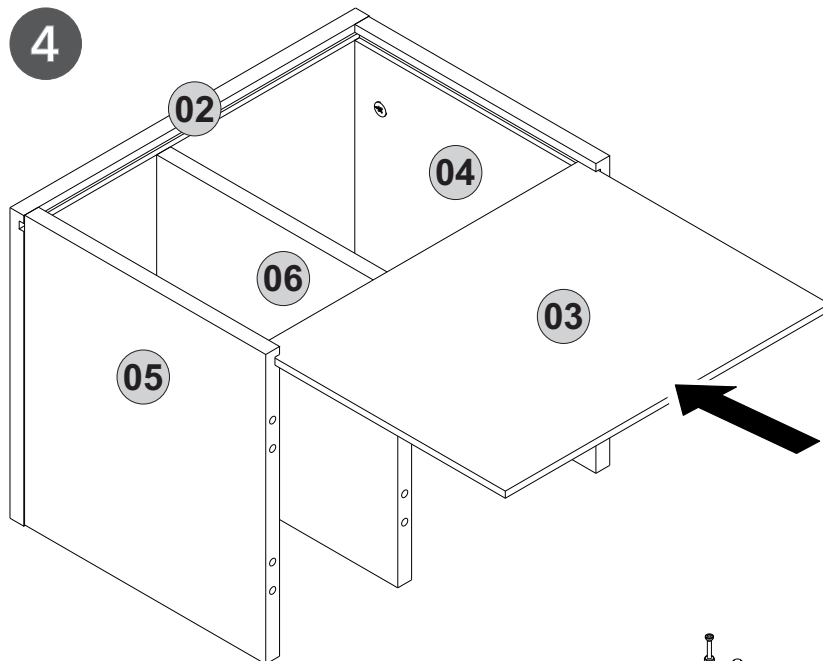


3

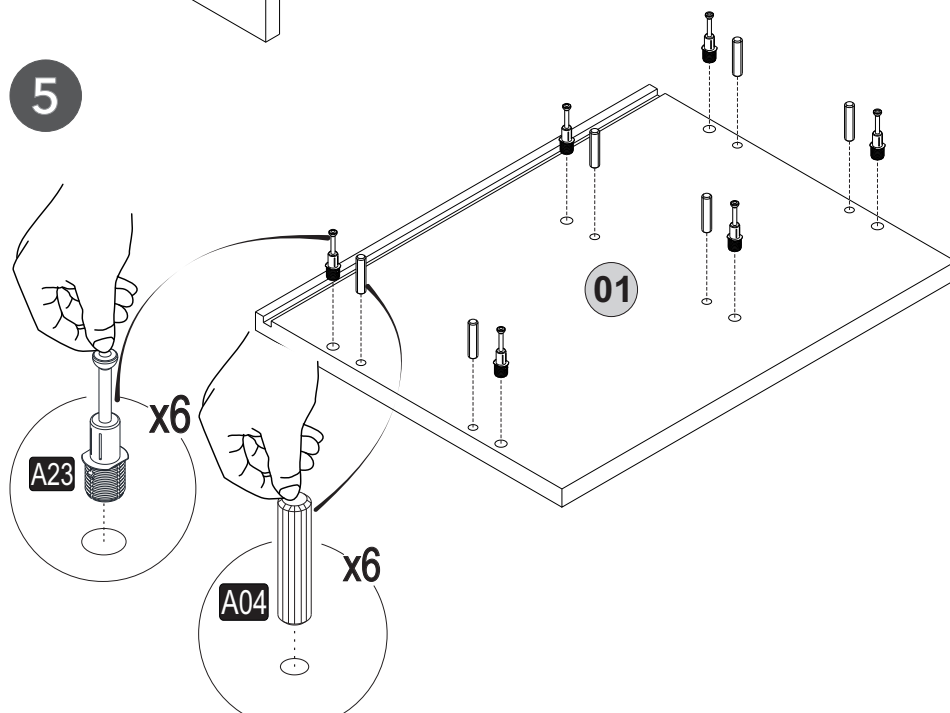


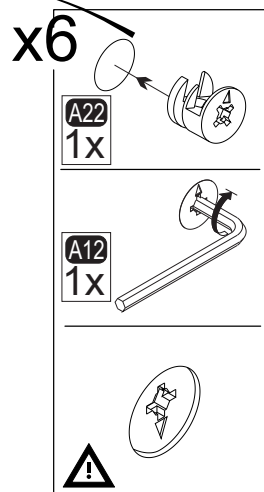
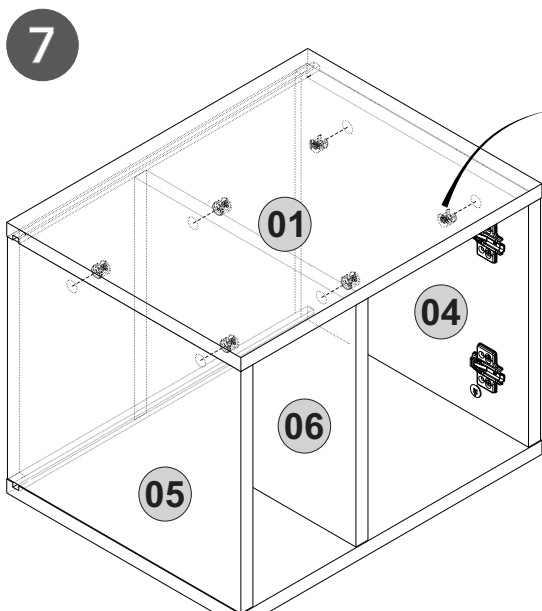
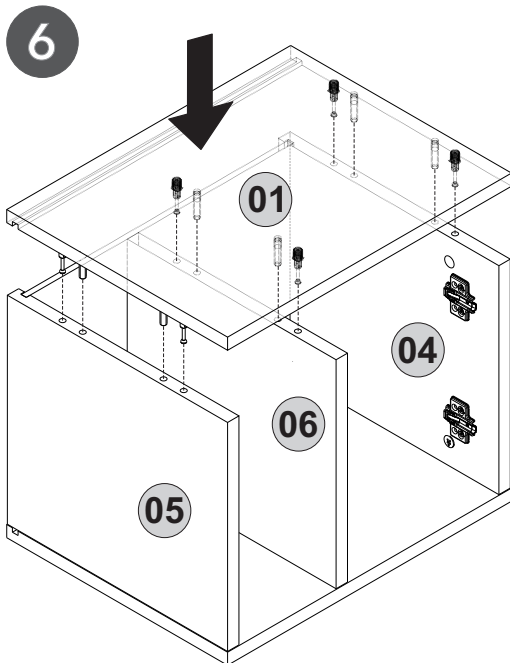
15

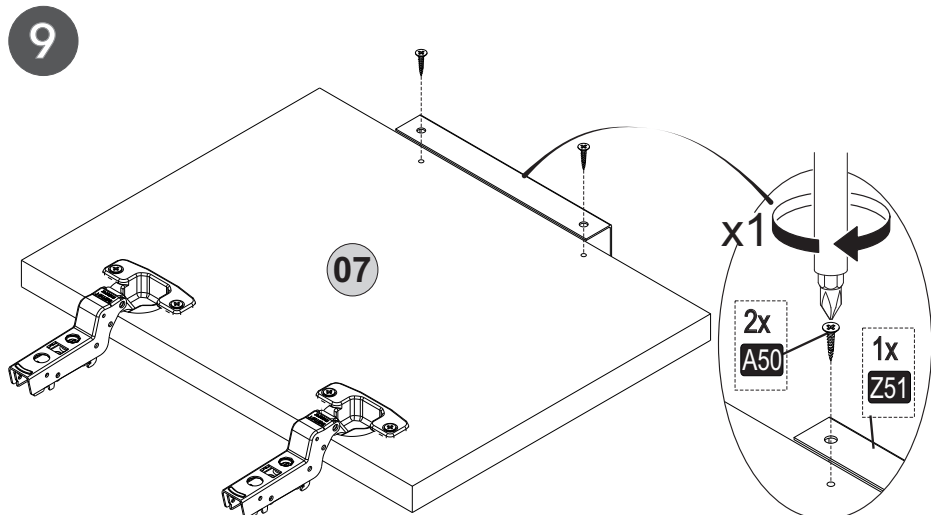
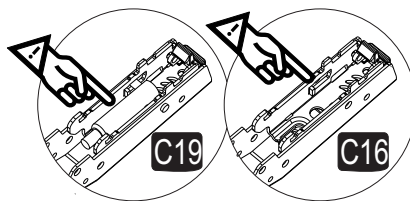
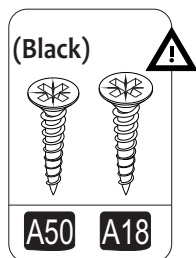
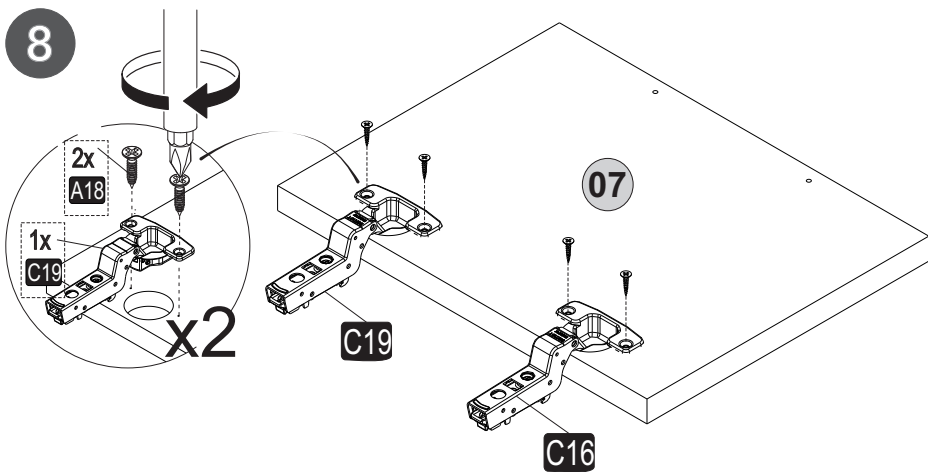
4



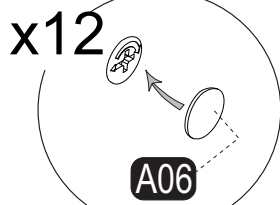
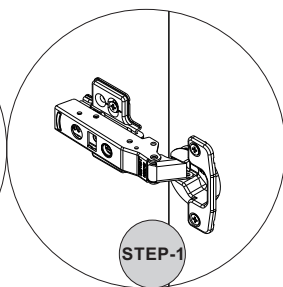
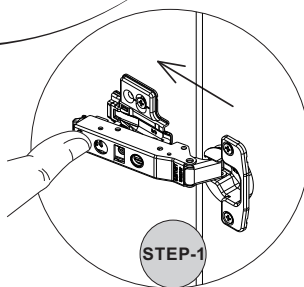
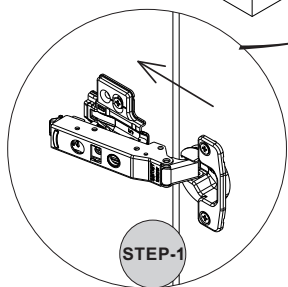
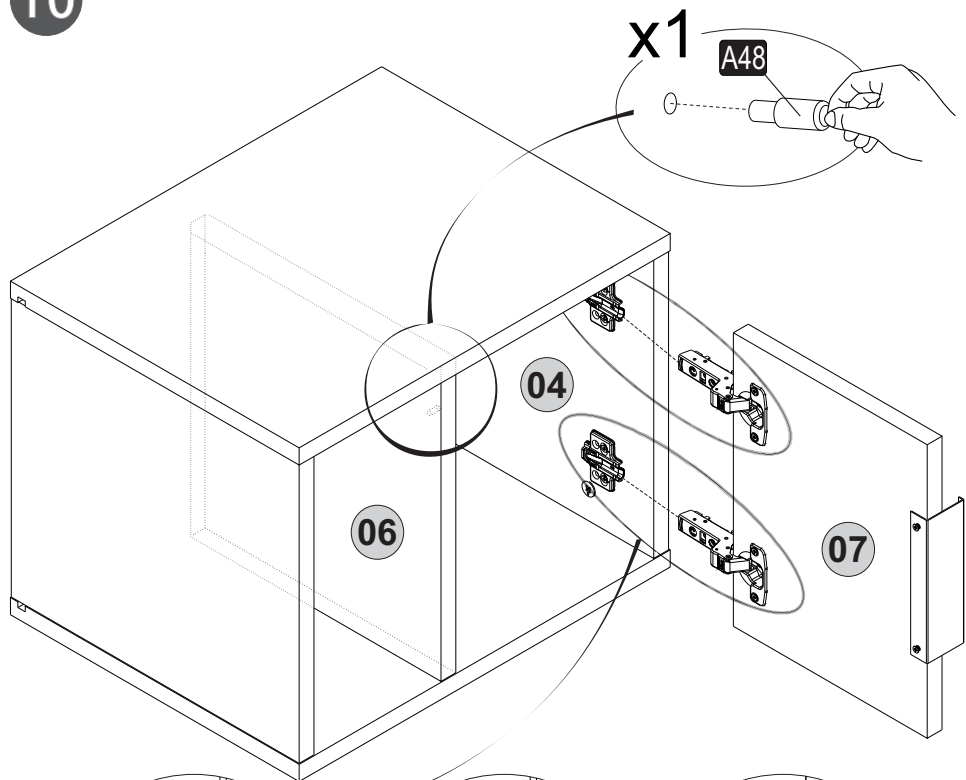
5



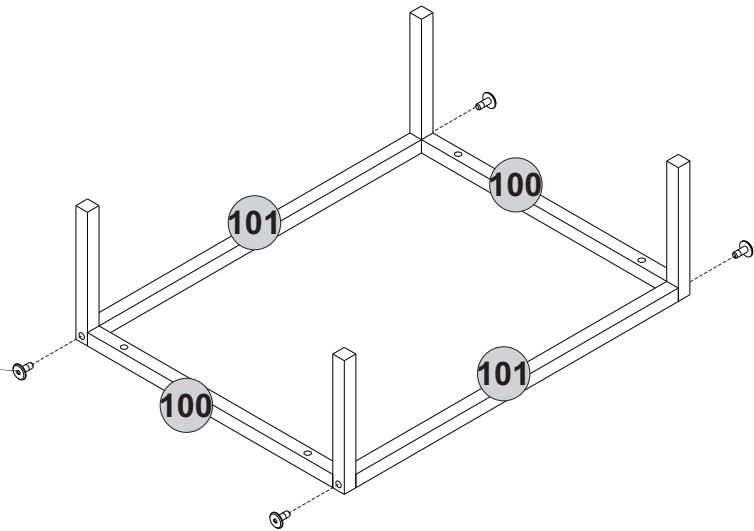
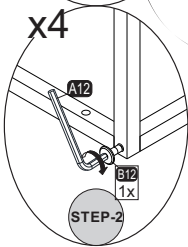
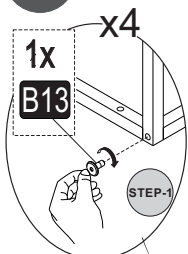




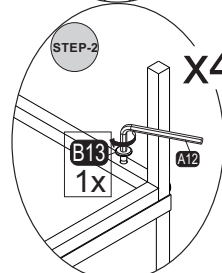
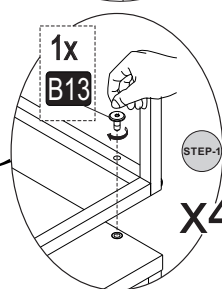
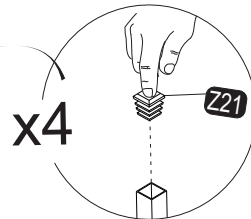
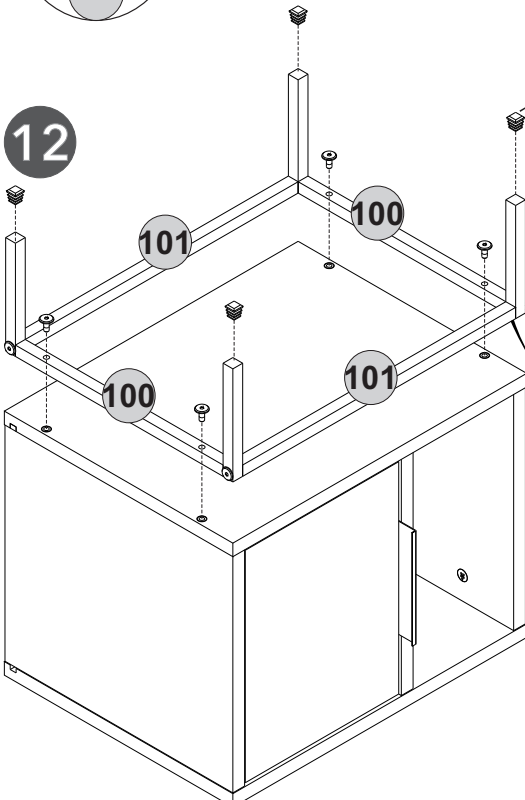
10

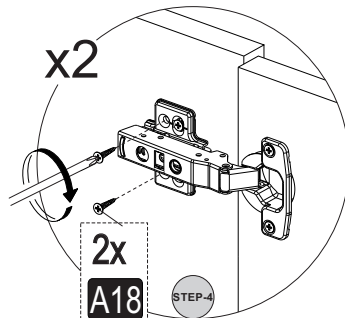
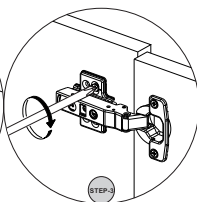
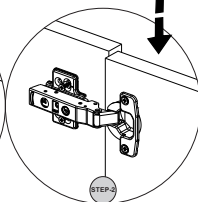
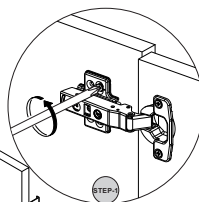
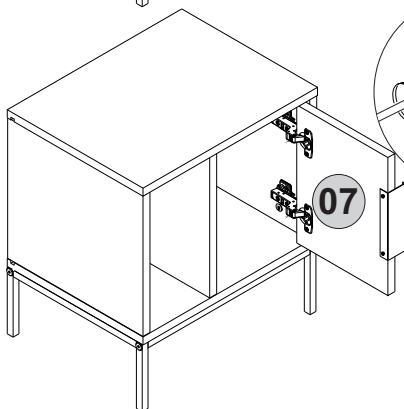
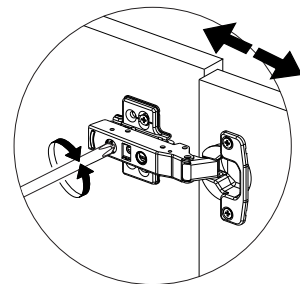
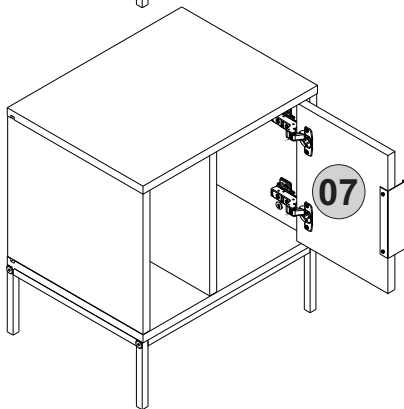
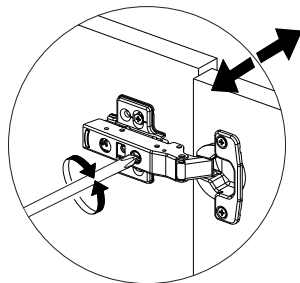
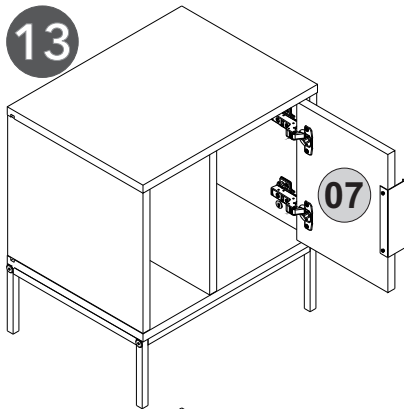


11

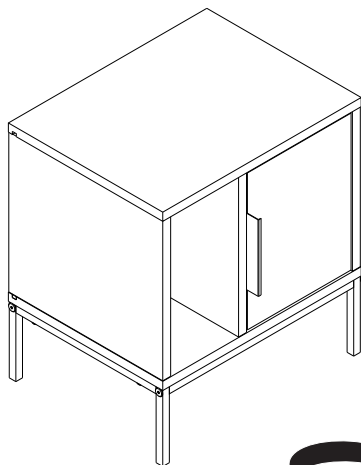


12





14



Rotate

