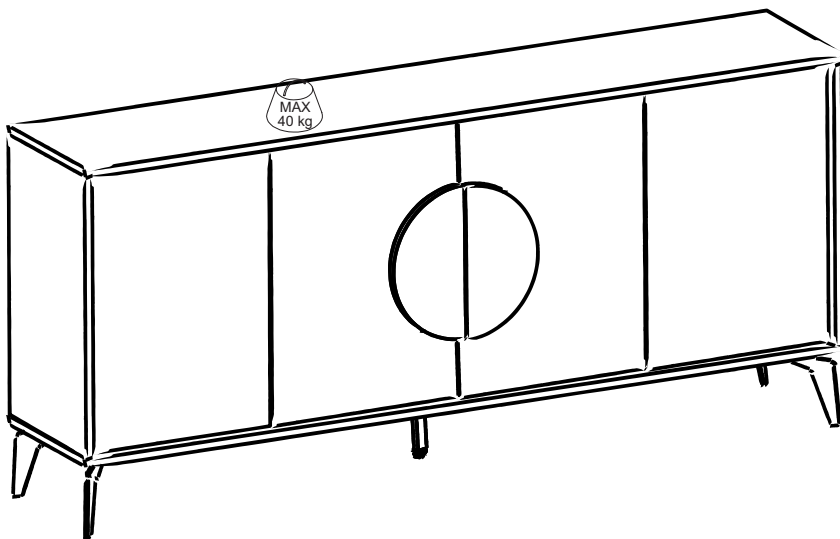


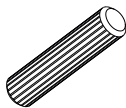
GP037-0250,2



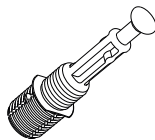
ATTENTION !!

Minifix is the main connection material used in our products.
Before starting assembly, please check the drawings below.

A04



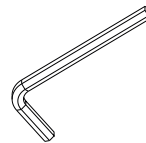
A23



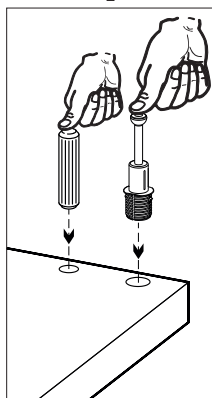
A22



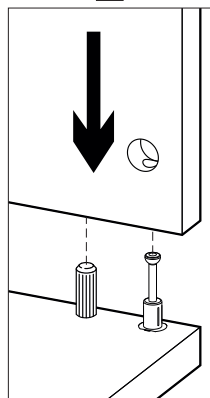
A12



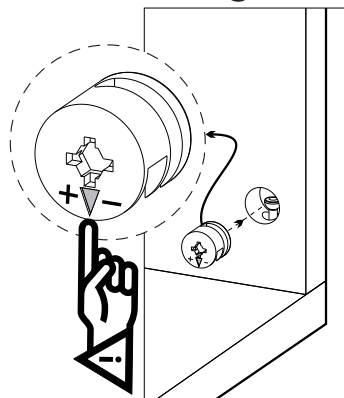
1



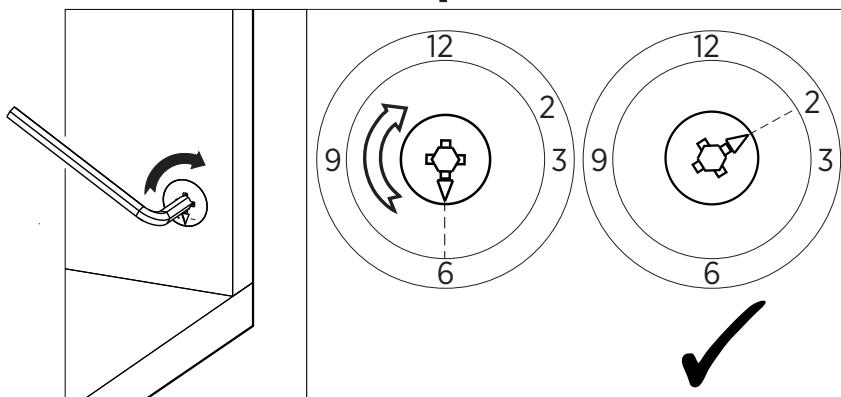
2



3

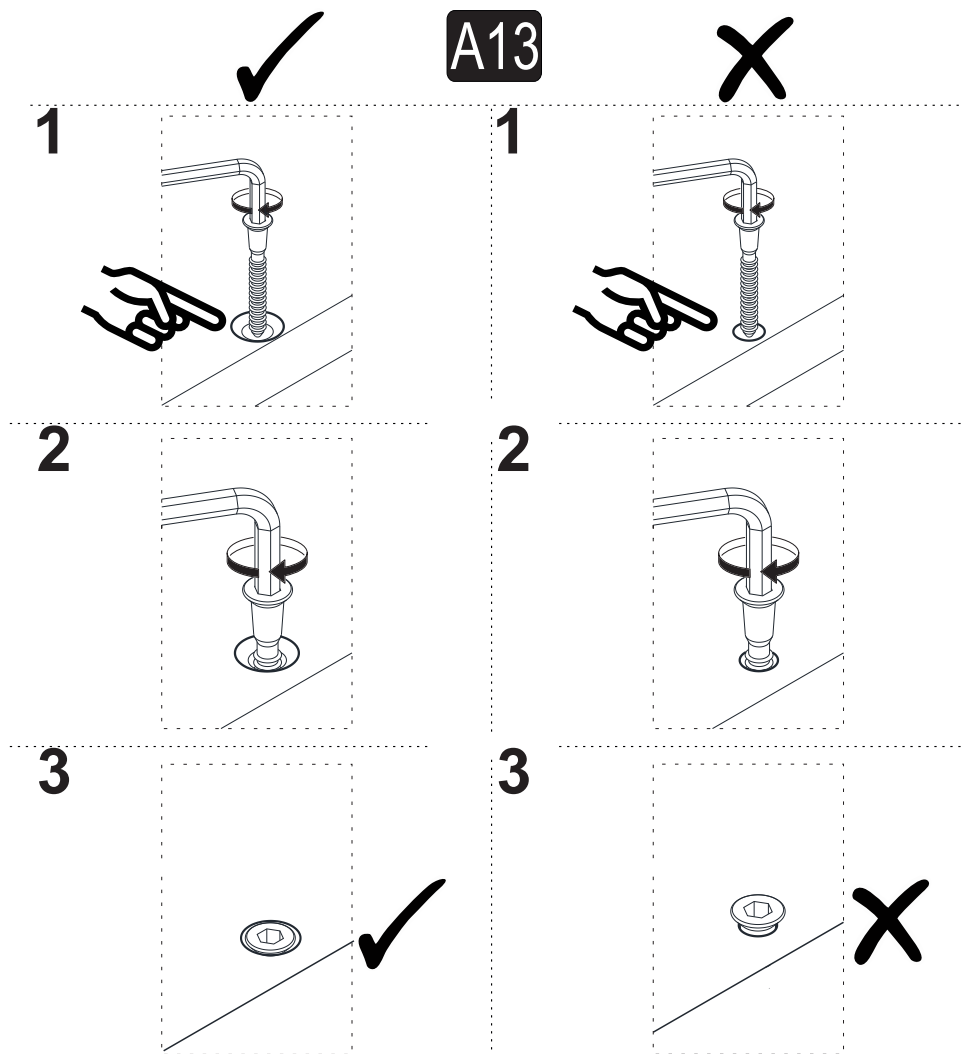


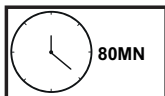
4



ATTENTION !!

Our products are screw system. Before you proceed with installation try to understand the following
















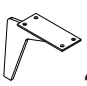




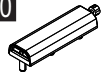


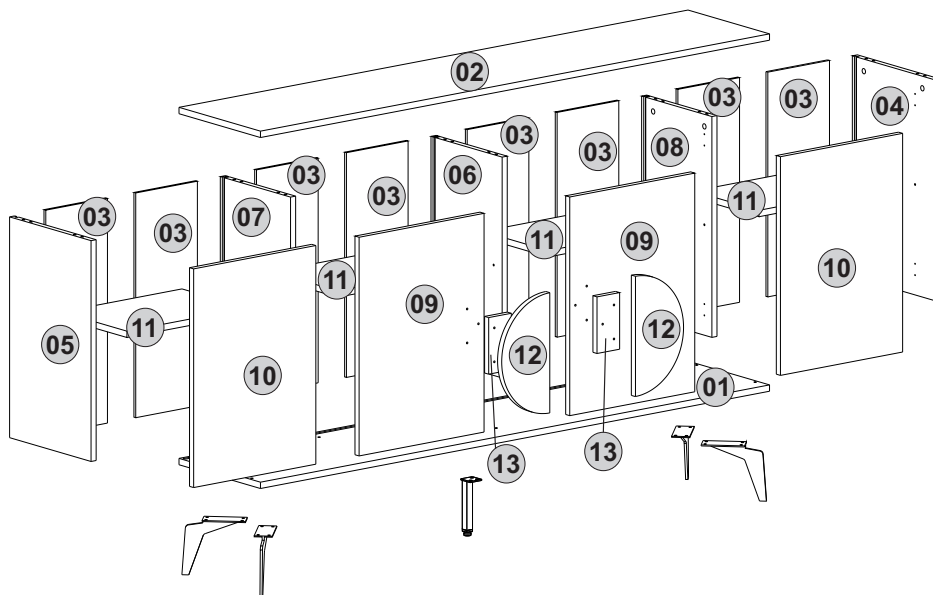


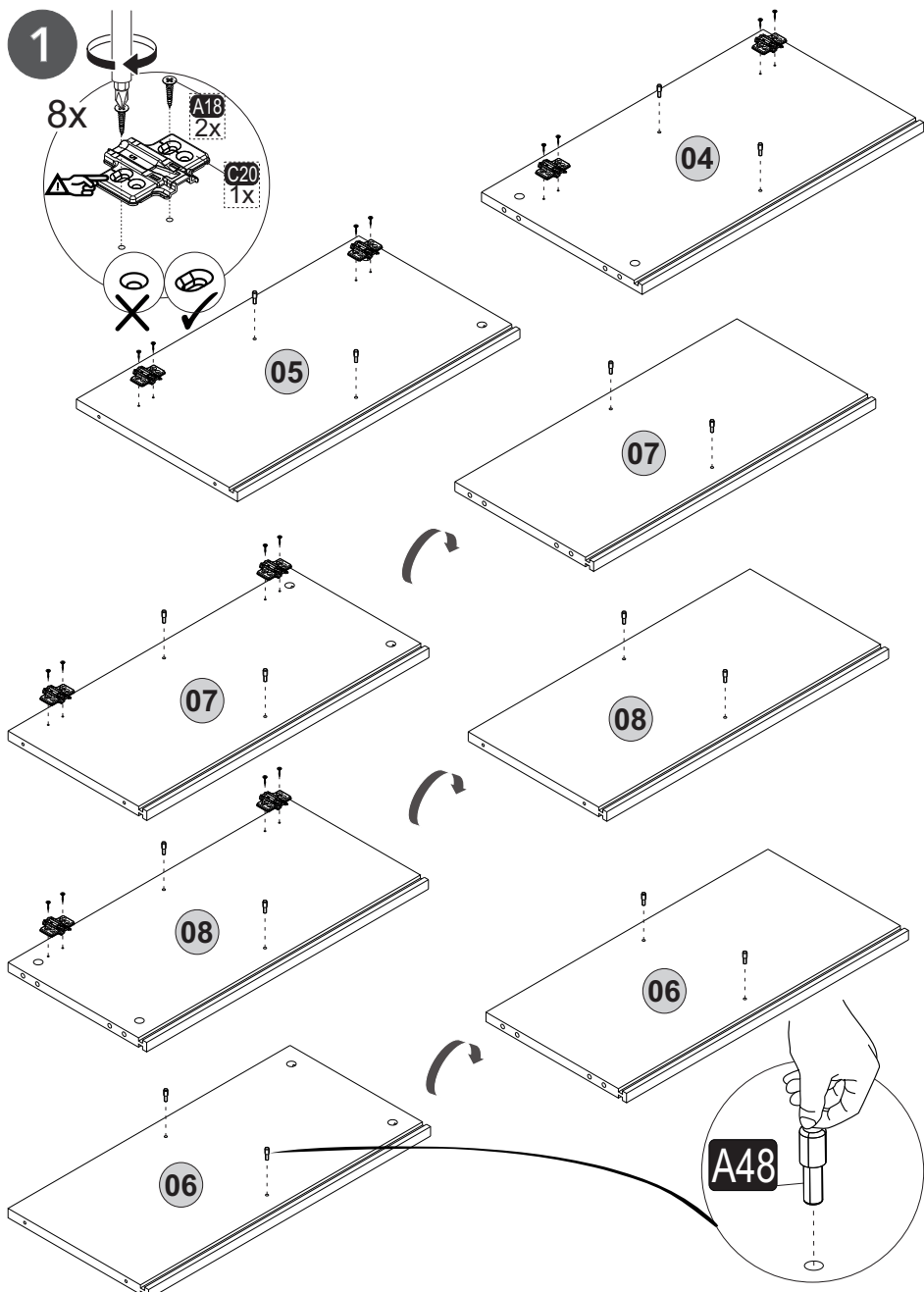
Follow the installation steps in the order as shown.
Position the parts as shown in the installation guide steps.

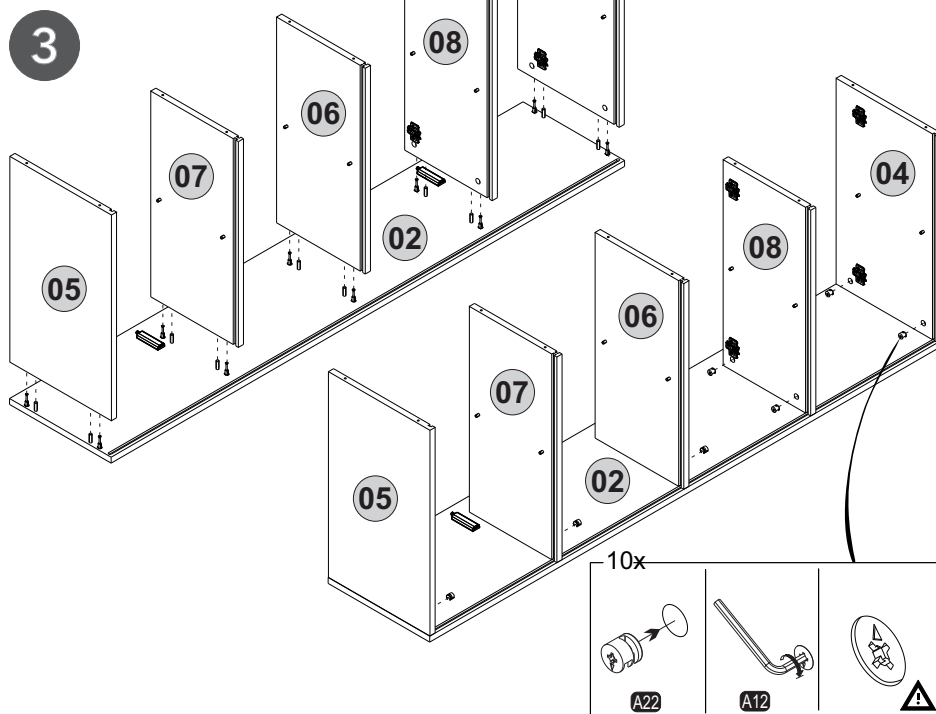
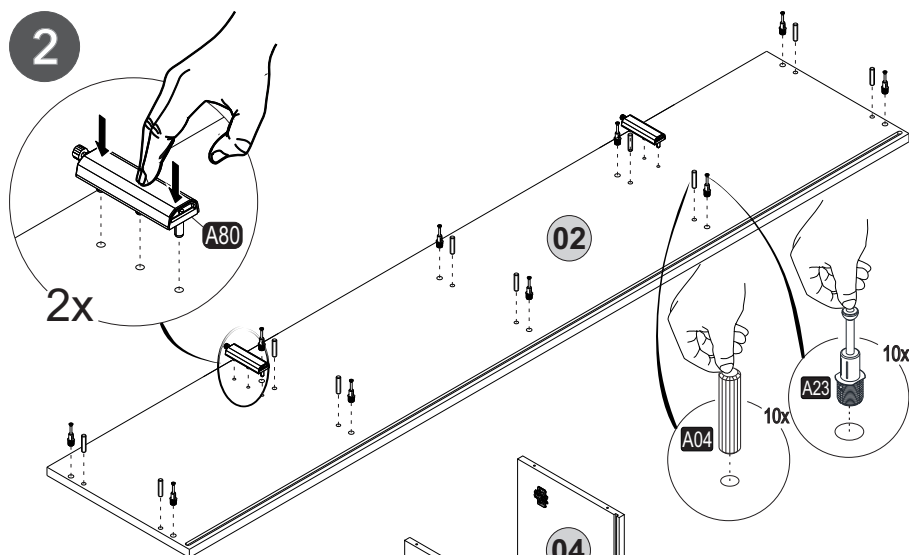


HARDWARE LIST

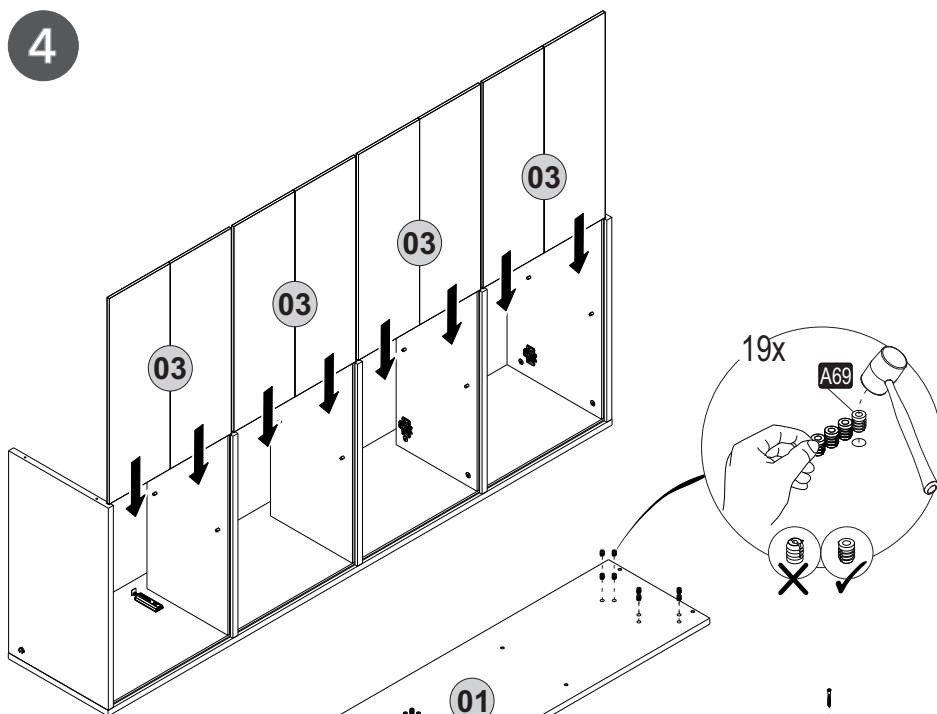
A22 Minifix k18  10x	A23 Minifix M10  10x	A04 Ø8  10x	A12 Allen  1x	A13 50mm  10x
A25 ARK.PL  32x	A18 3,5x18  80x	C16 5db(S)  2x	C19 5dbF(S)  2x	C20 Mtk(S)  8x
A06 18mm  C1-20x C2-06x	A48 Raf Pim  16x	A17 4X50  6x	C15 YdbF(S)  2x	C18 YdbF(S)  2x
Z71 LEG  4x	Z102 A.M.A 160mm  1x	B15 15 (black)mm  19x	A69 P.D.  19x	A75 5X13  6x
A80 bas ac  2x				



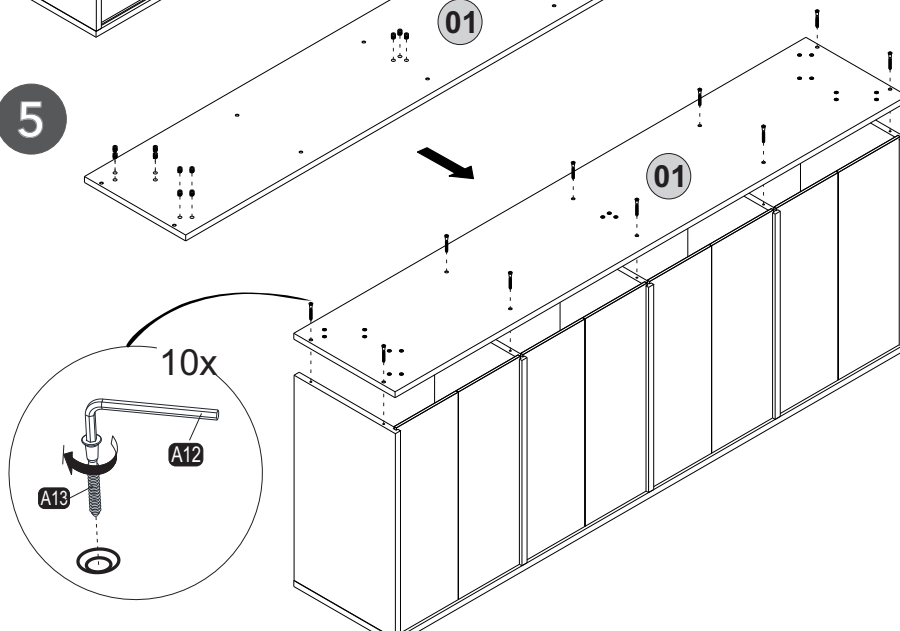


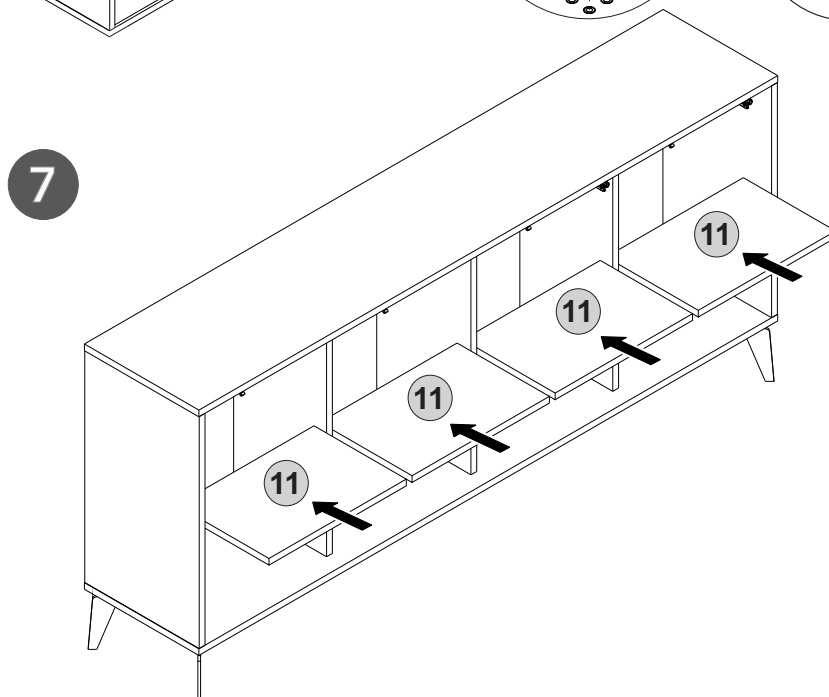
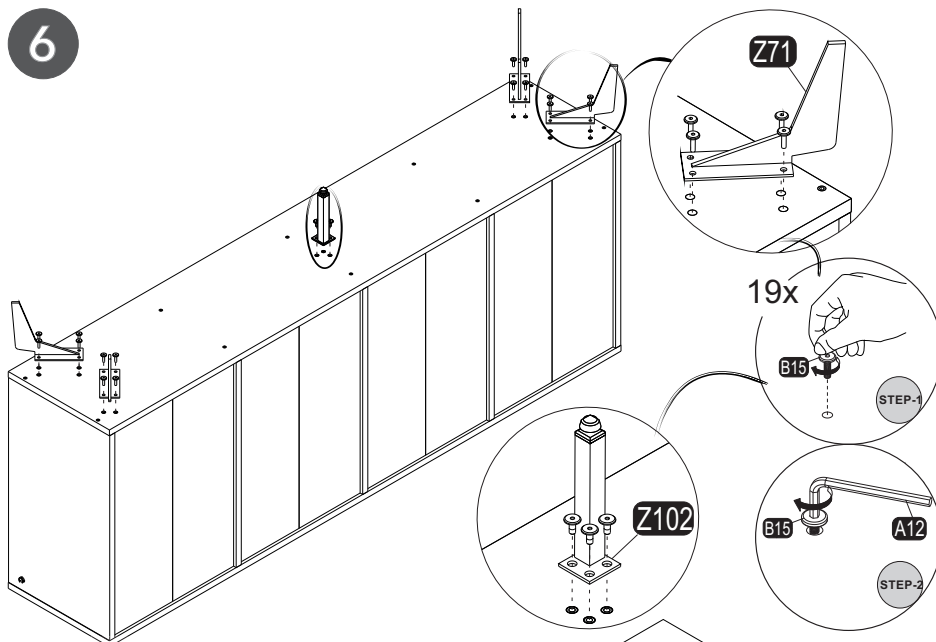


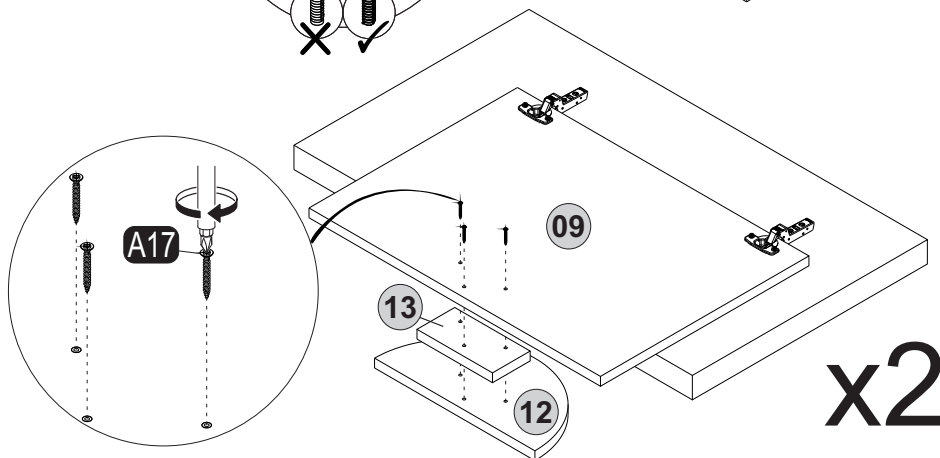
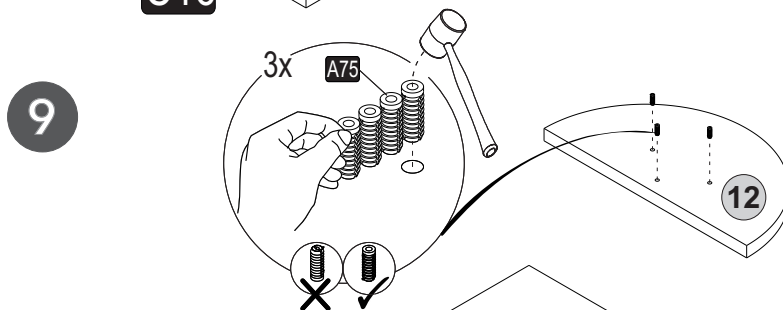
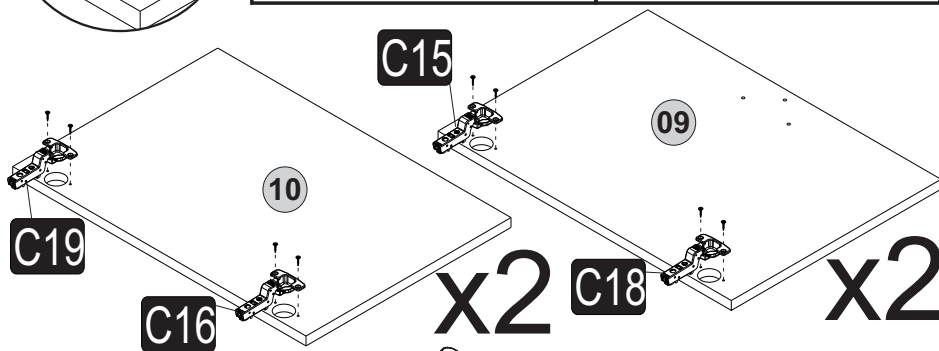
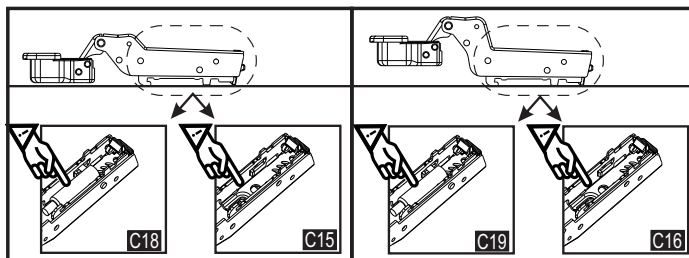
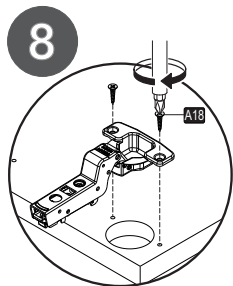
4



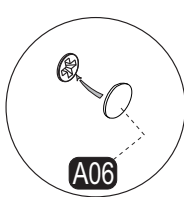
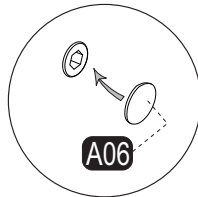
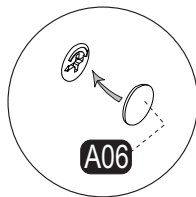
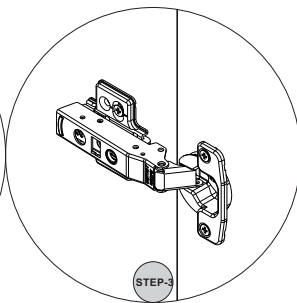
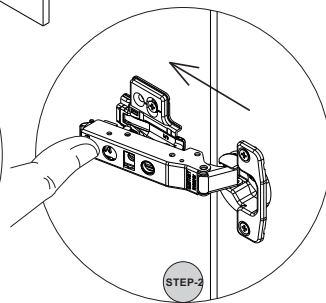
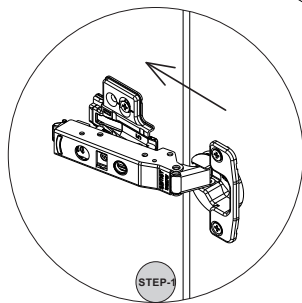
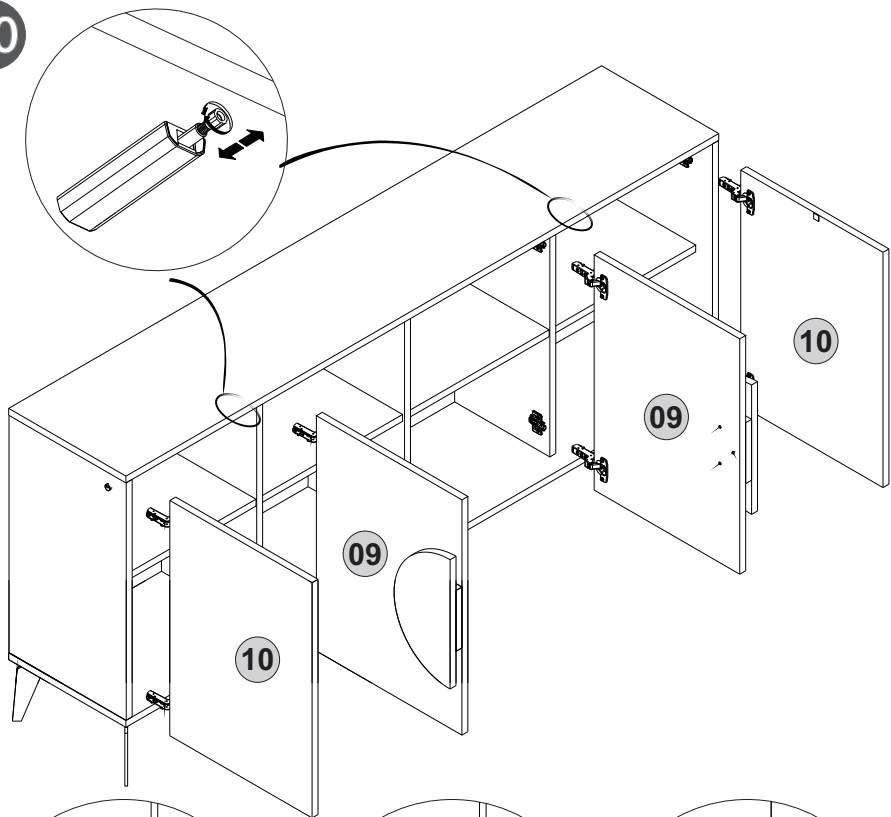
5



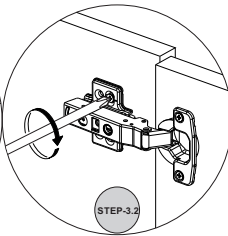
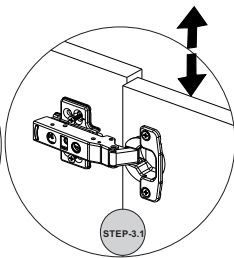
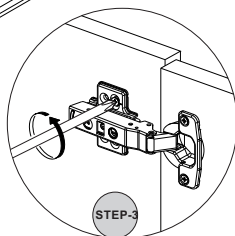
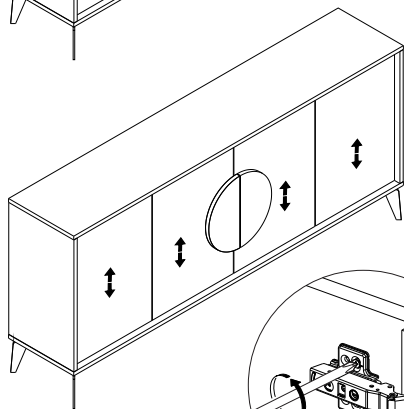
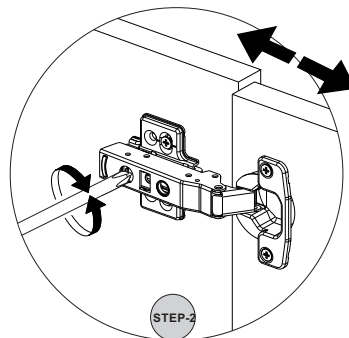
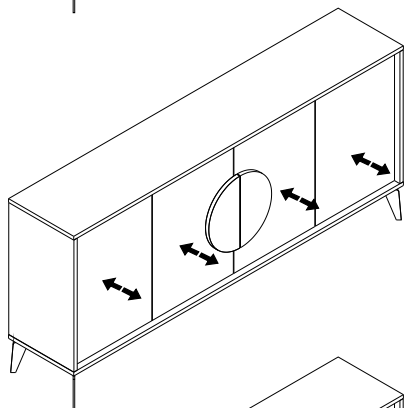
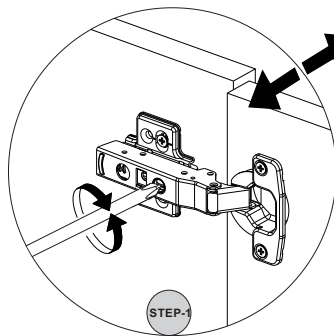
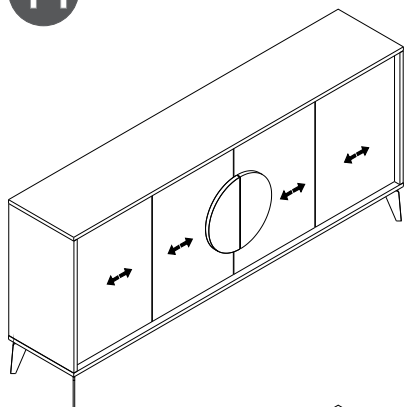




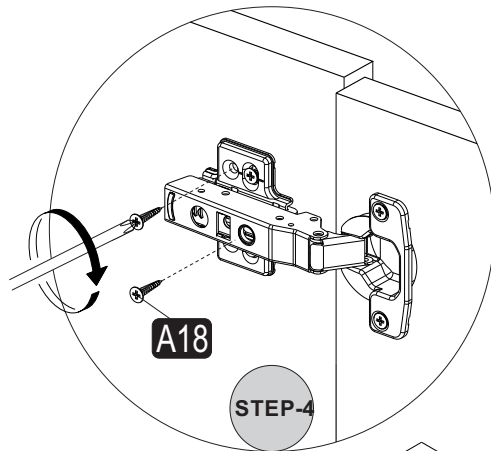
10



11



12



13

