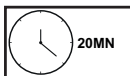


**GP037-0224,1**












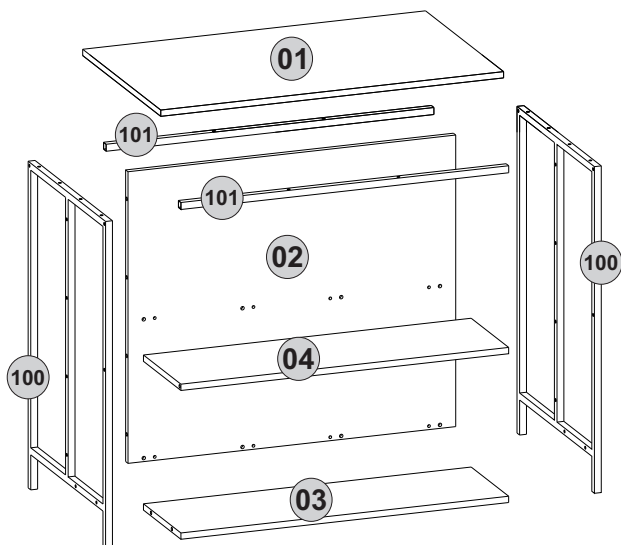


Follow the installation steps in the order as shown.  
Position the parts as shown in the installation guide steps.

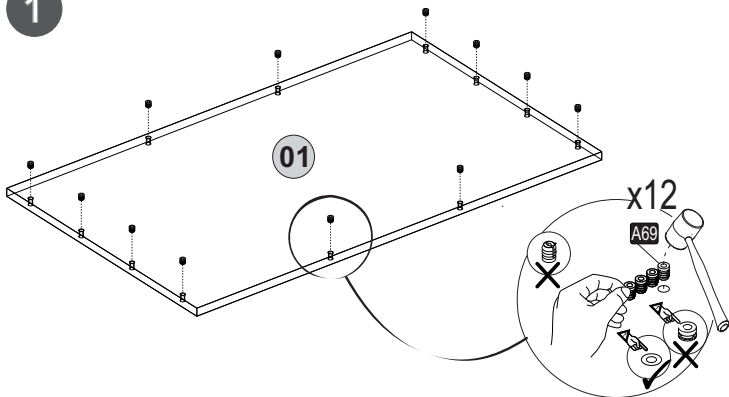


## HARDWARE LIST

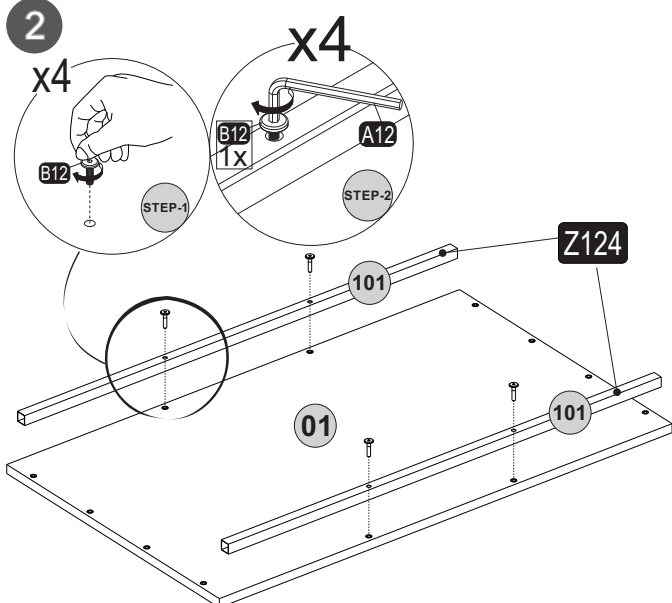
<b>A04</b>  Ø8x30 8x	<b>A06</b>  18mm C3-8x	<b>A12</b>  Allen 1x	<b>A22</b>  Minifix k18 8x	<b>A23</b>  Minifix M10 8x
<b>A69</b>  P.D. 26x	<b>B12</b>  30 (black)mm 30x	<b>Z27</b>  20x20x18 4x	<b>Z124</b>  D.B.M.M. 100-2x 101-2x	



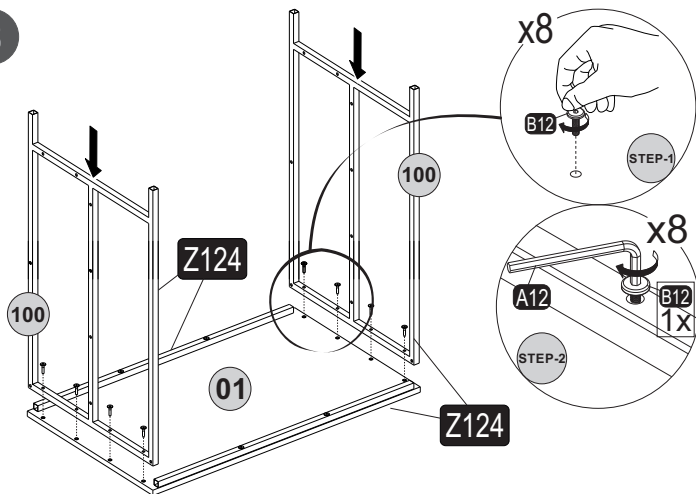
1



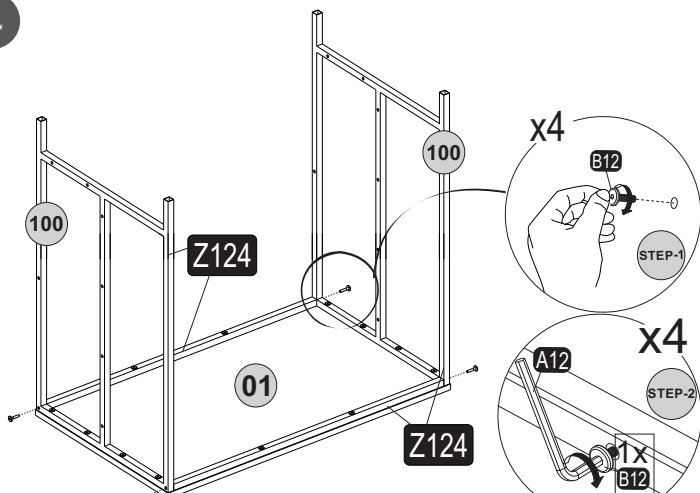
2



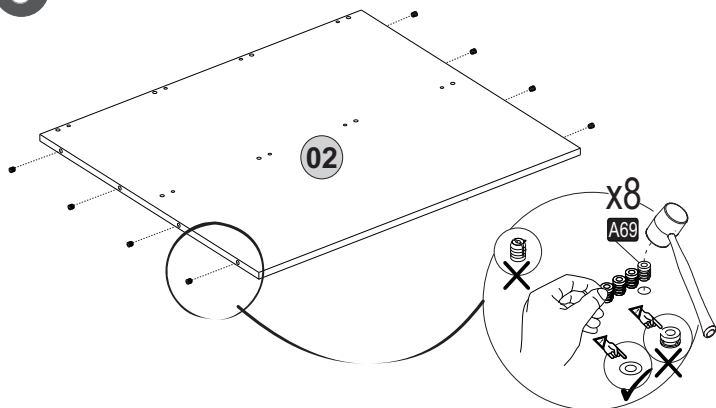
3



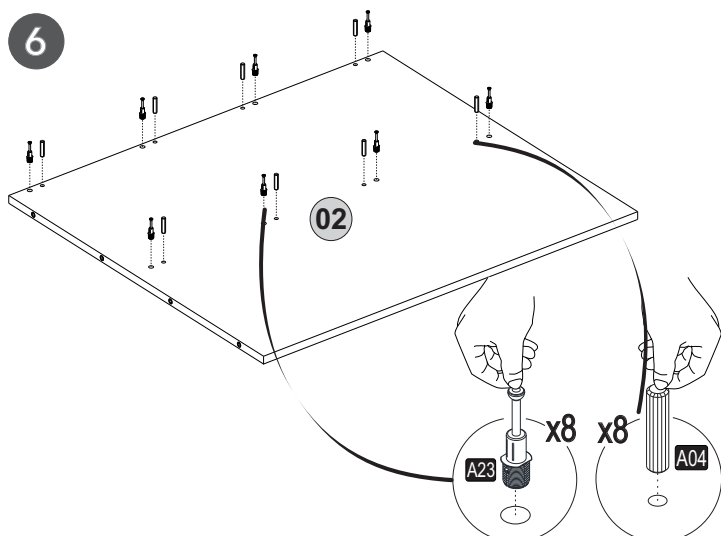
4

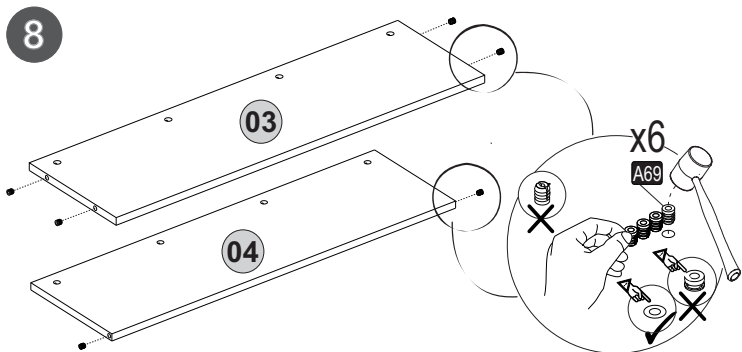
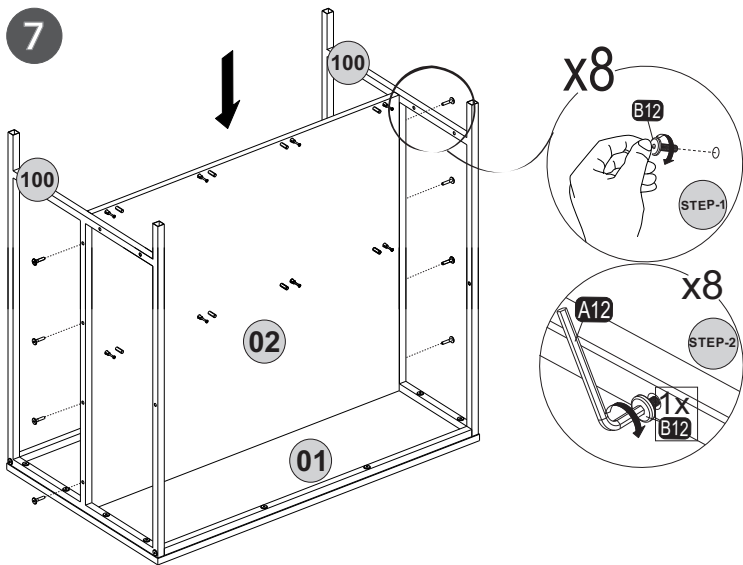


5

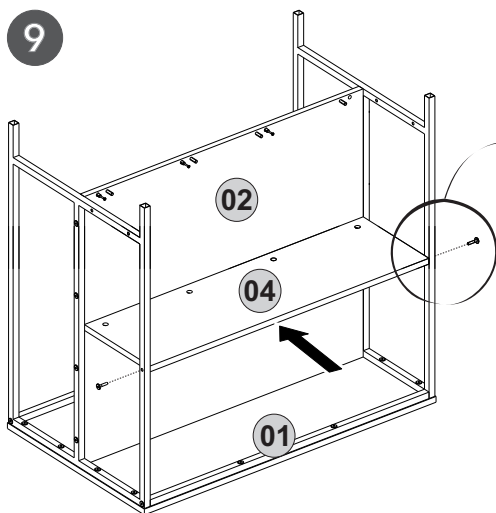


6

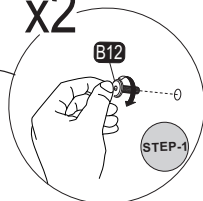




9

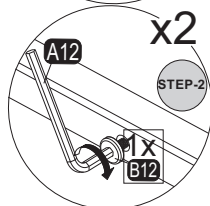


x2



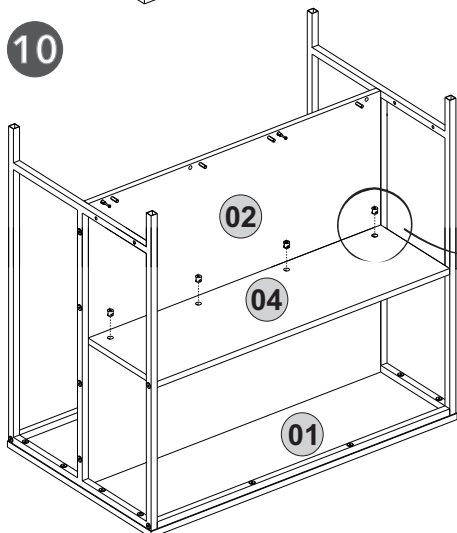
STEP-1

x2

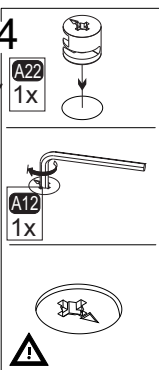


STEP-2

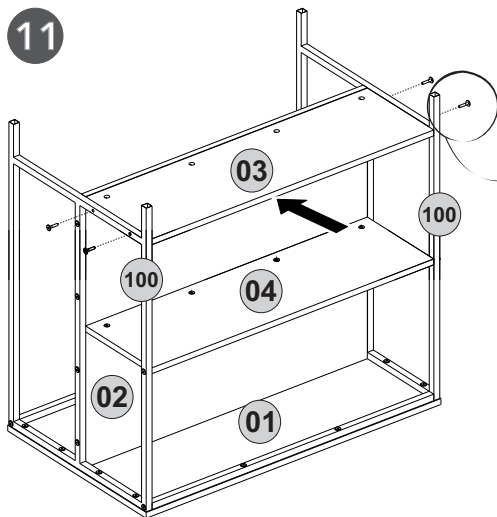
10



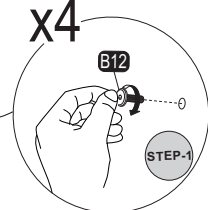
x4



11

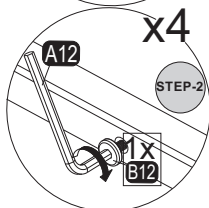


x4



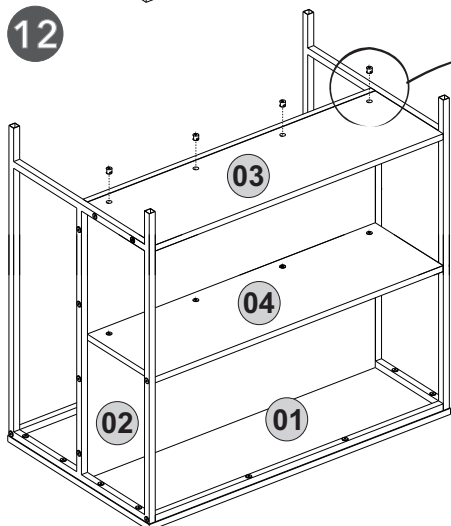
STEP-1

x4

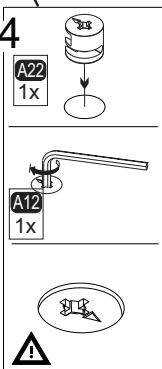


STEP-2

12



x4





13

