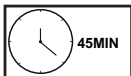


GP037-0247,1









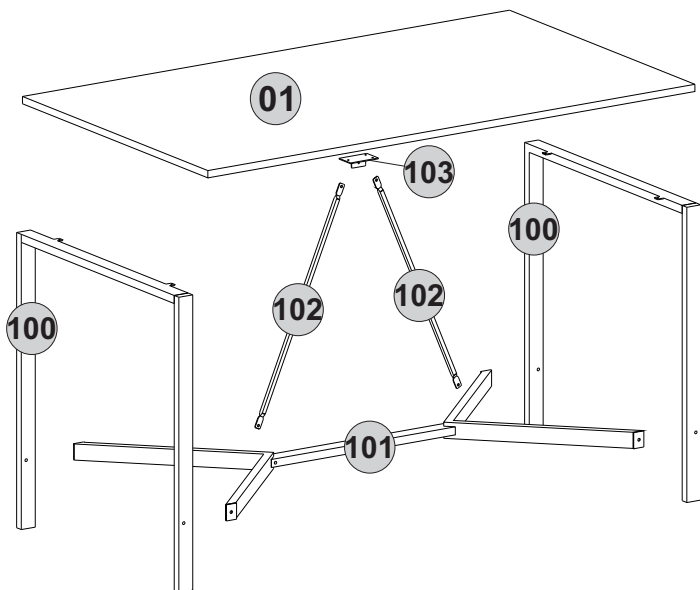


Follow the installation steps in the order as shown.
Position the parts as shown in the installation guide steps.

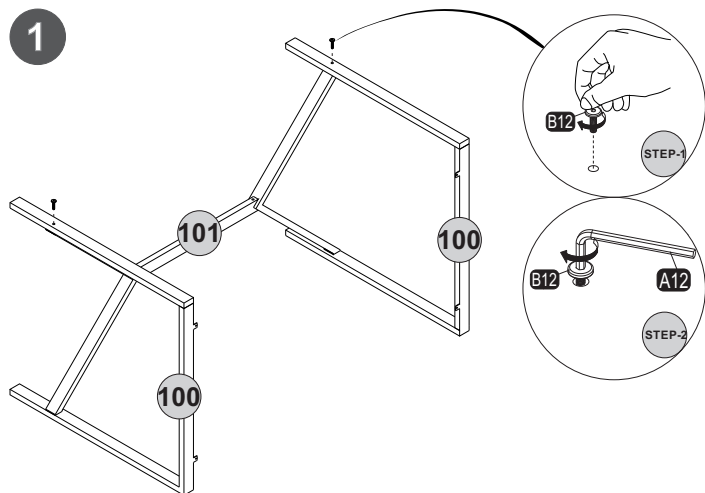


HARDWARE LIST

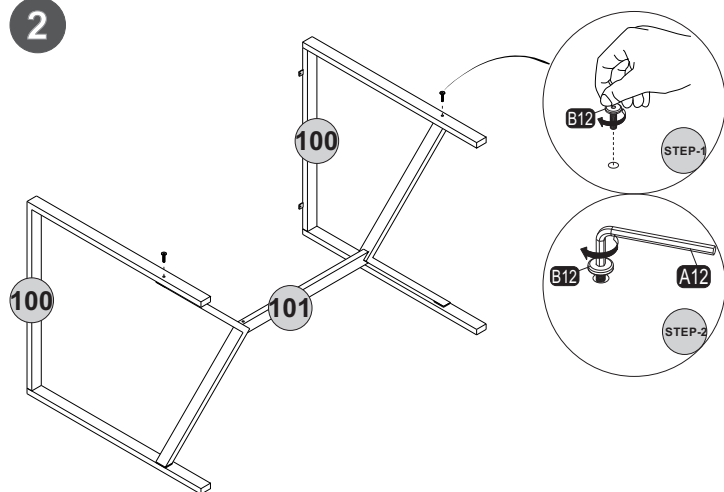
A12	Allen	A50	3,5x16 (Black)	B11	10 (black)mm	B12	30 (black)mm	Z162	YMM
									
1x		7x		3x		4x		1x	
								Z174	40x20
									4x

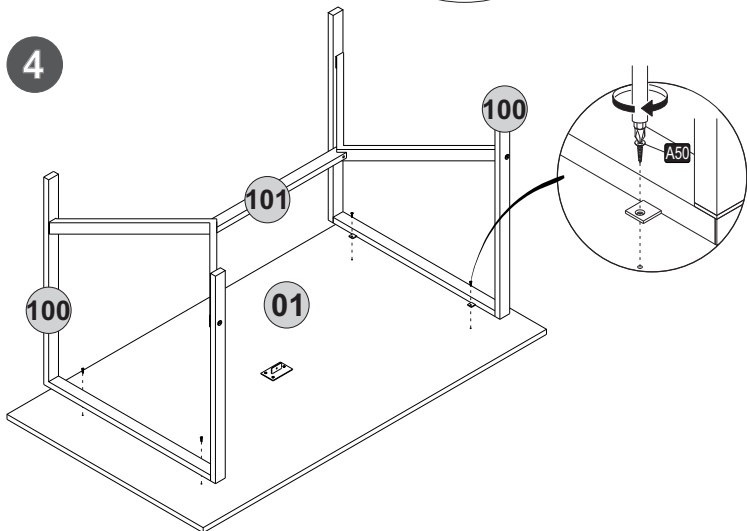
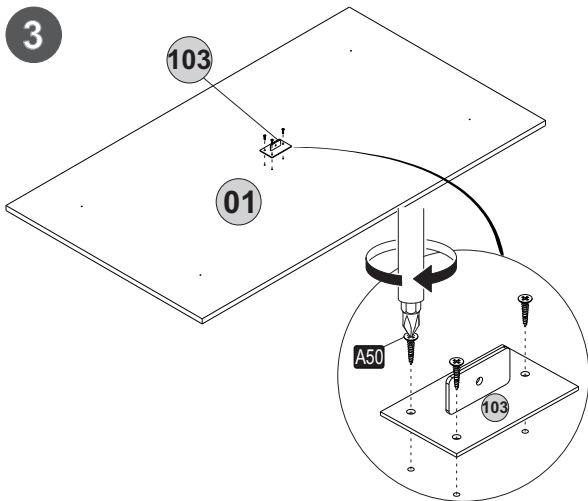


1

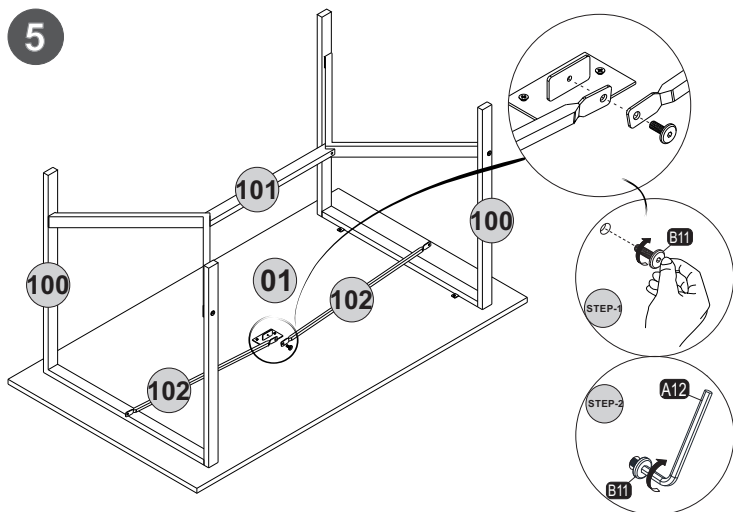


2

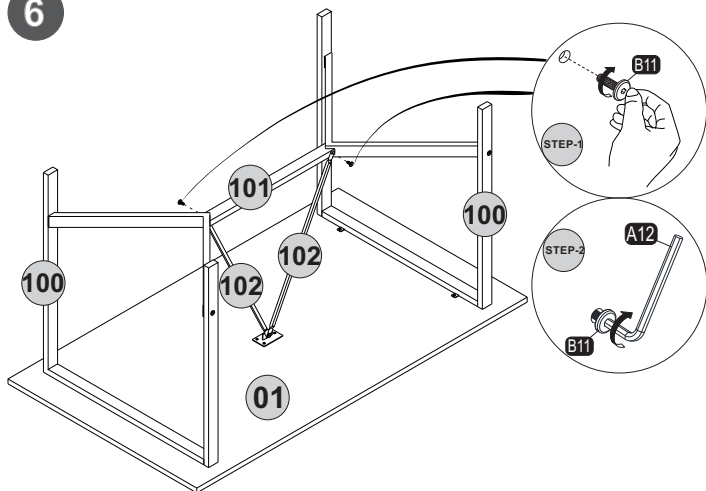




5



6



7

