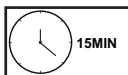


GP037-0261,3



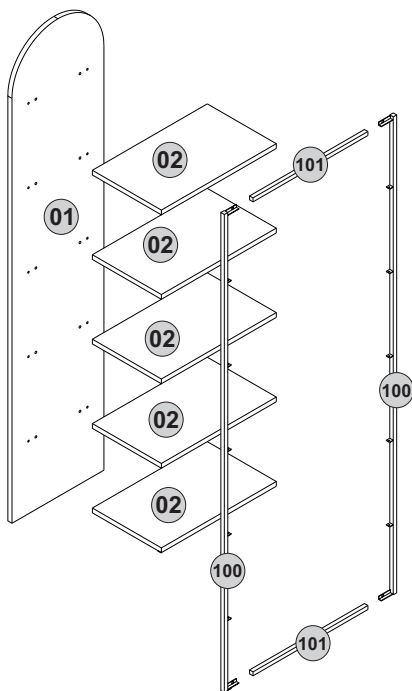


Follow the installation steps in the order as shown.
Position the parts as shown in the installation guide steps.

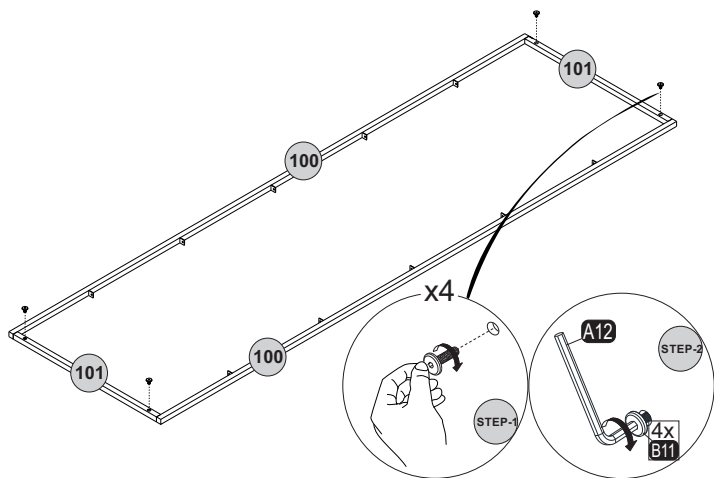
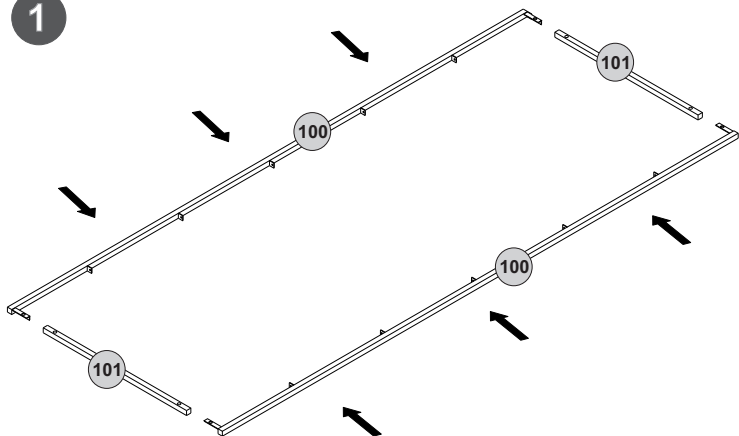


HARDWARE LIST

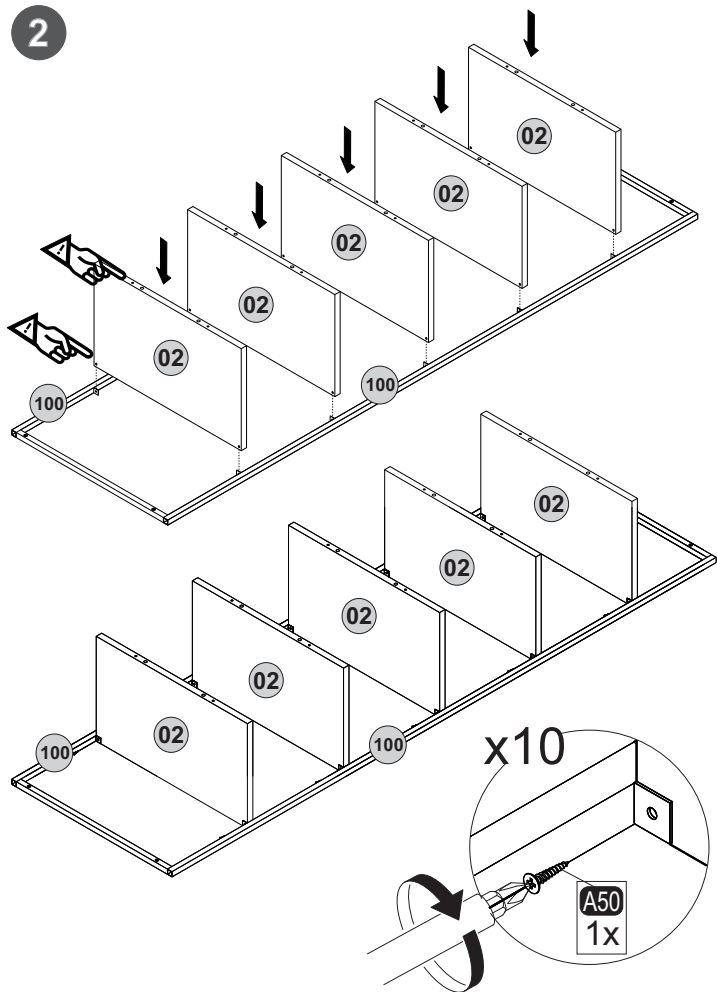
A50 3,5x16 (Black) 10x 4x50 2x	A04 Ø8x30 10x 3,5x18 4x	A13 50mm 10x 15x90x30 2x	A12 Allen 1x 18mm C1-10x	A16 DbØ8 2x 10 (black)mm 4x
A17 2x	A18 4x	A87 2x	A06 1x	B11 4x



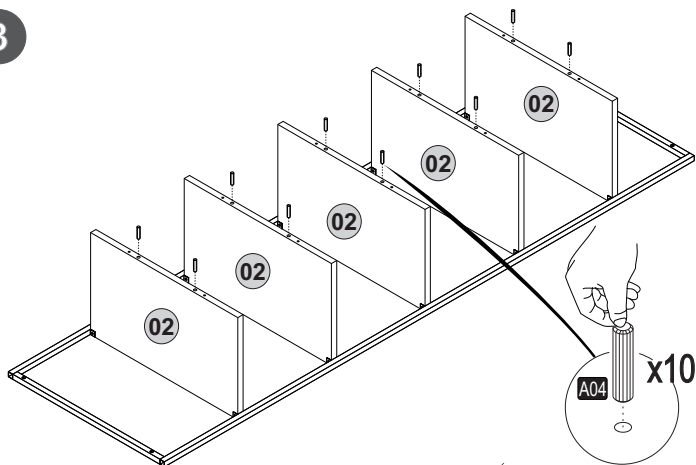
1



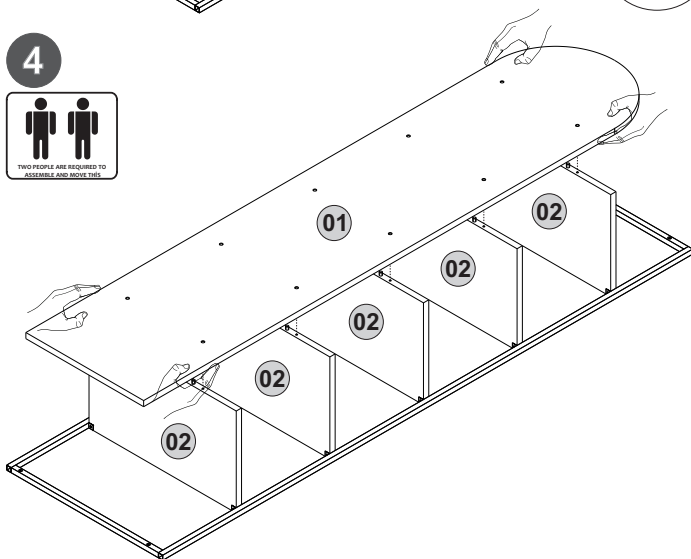
2



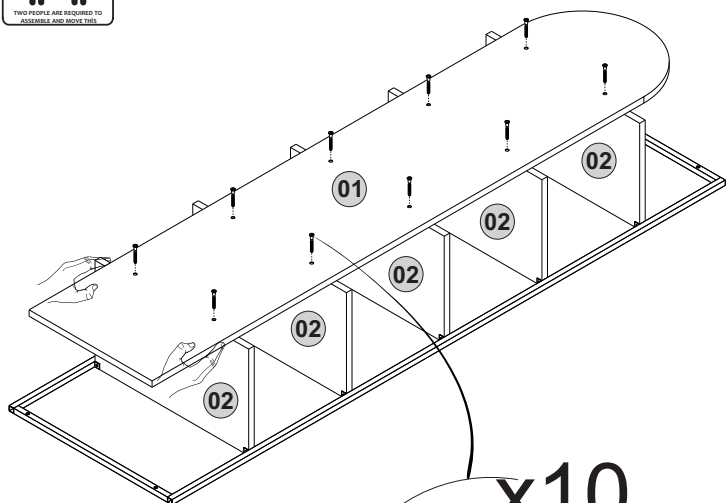
3



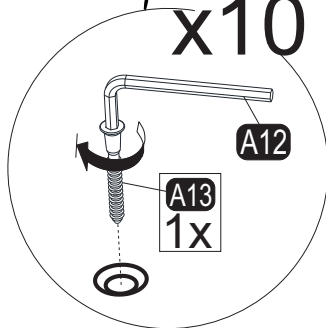
4



5



x10



6

