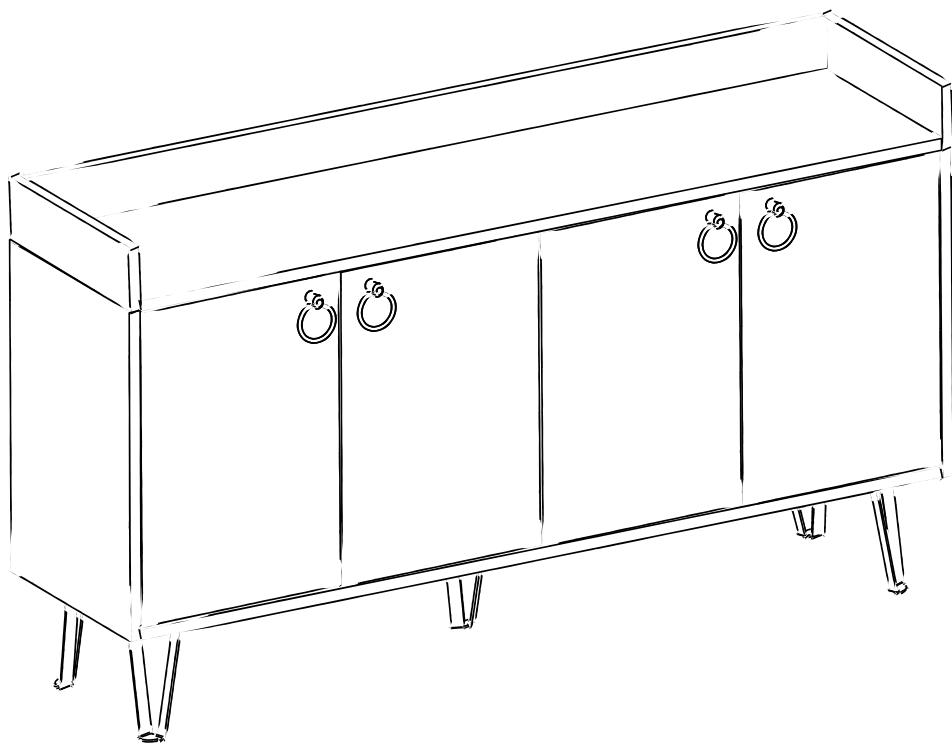


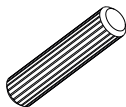
GP037-0064,2



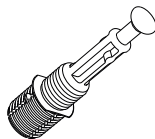
ATTENTION !!

Minifix is the main connection material used in our products.
Before starting assembly, please check the drawings below.

A04



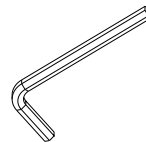
A23



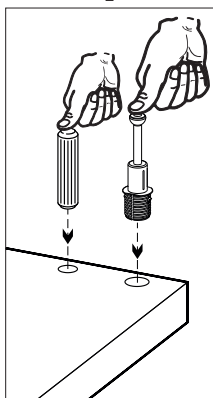
A22



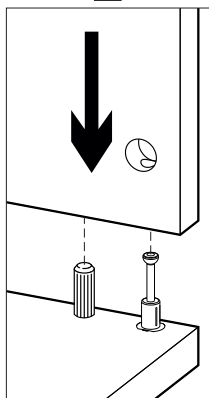
A12



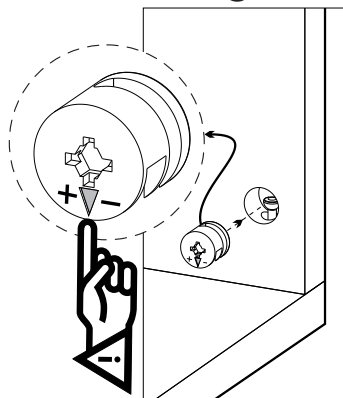
1



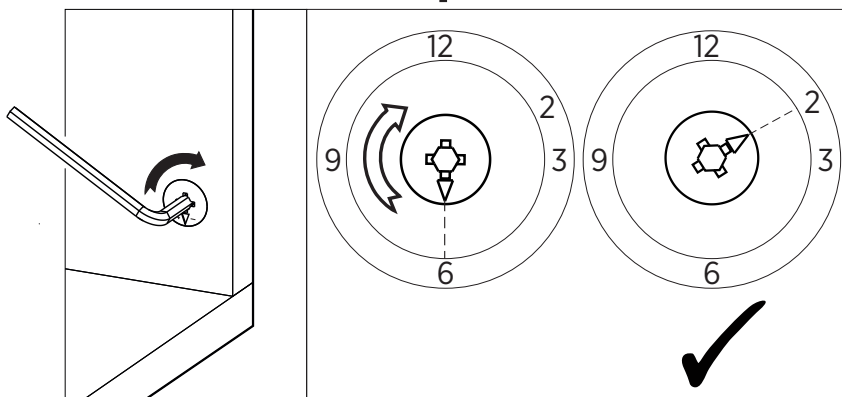
2



3

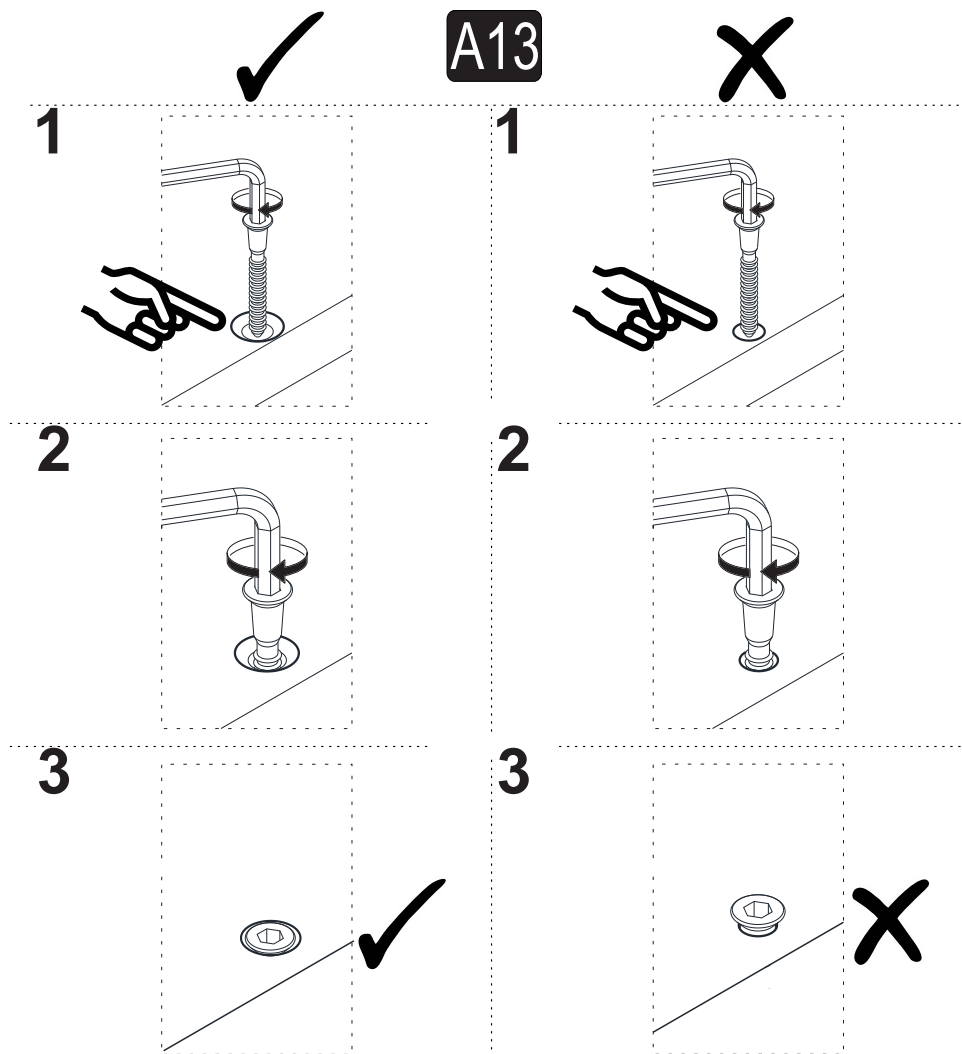


4



ATTENTION !!




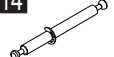
















Our products are screw system. Before you proceed with installation try to understand the following

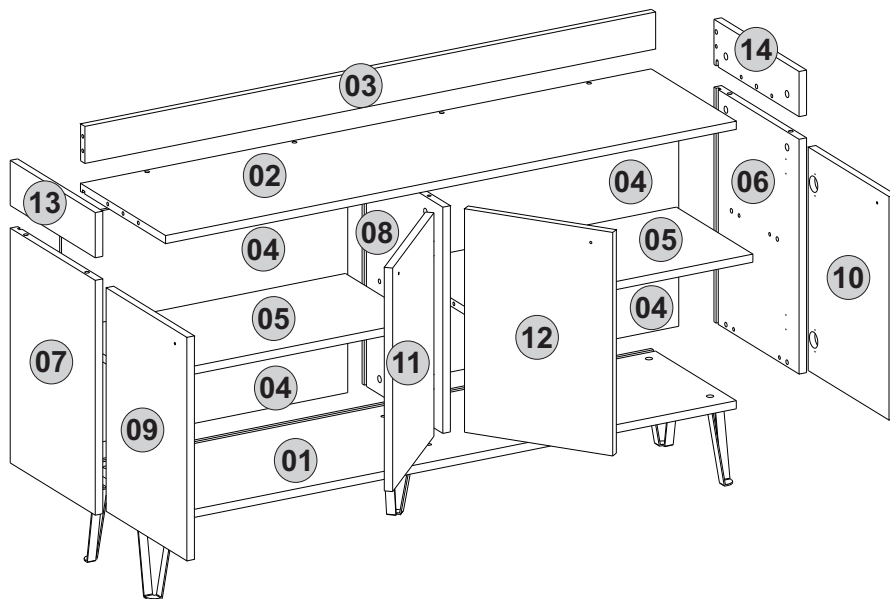


Follow the installation steps in the order as shown.
Position the parts as shown in the installation guide steps.

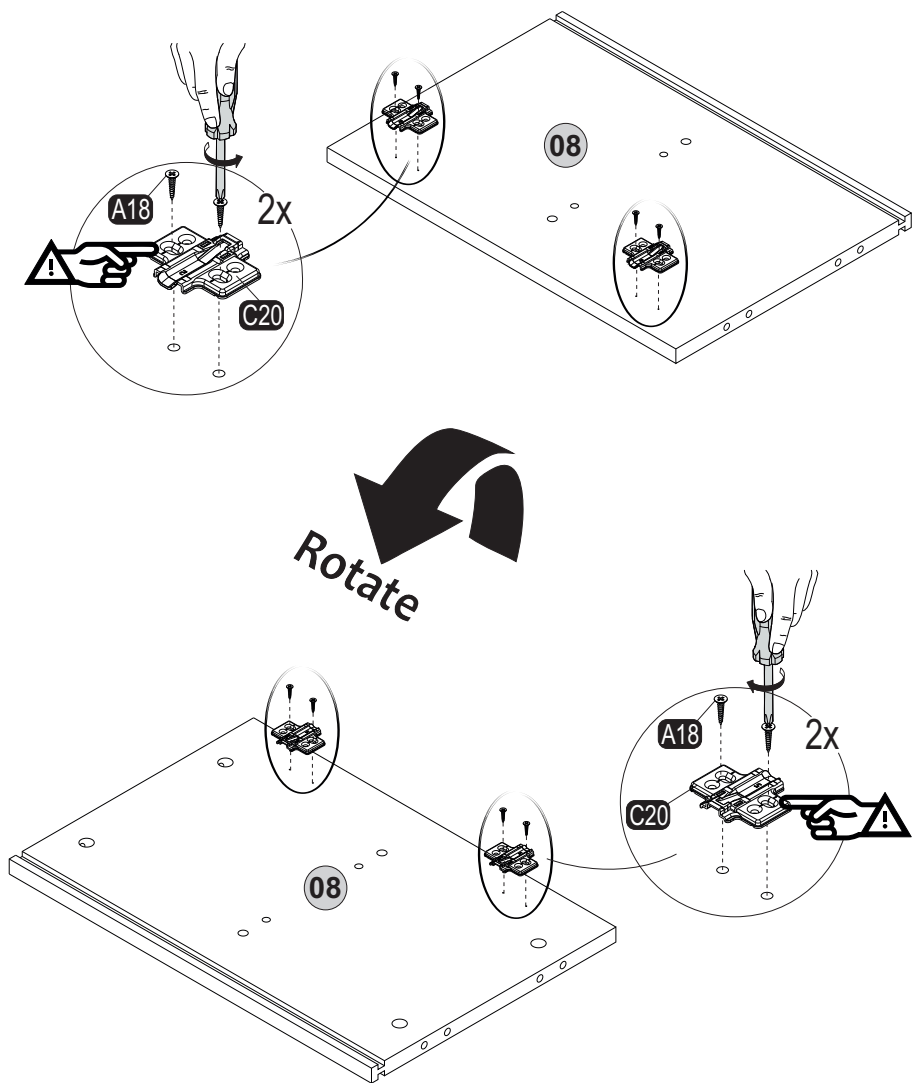


ACCESSORY LIST

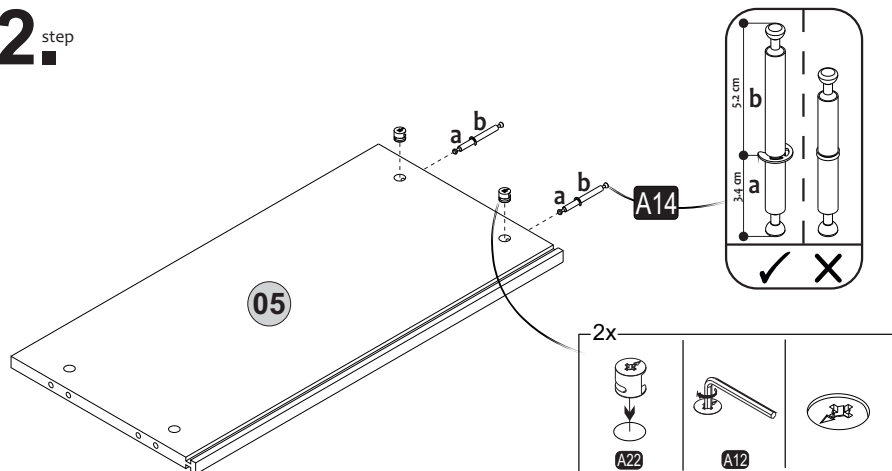
A22 Minifix k18  32x Ø8	A23 Minifix M10  20x 4 SW	A31 DFM6-68  4x	A14 DFM6-86  2x	A04 Ø8  18x
A41  2x	A12  1x	C19 Sdbf(S)  2x	C16 Sdbf(S)  2x	C18 Ydbf(S)  2x
A18 3,5x18  60x	Z53  4x	Z07 4x22kv  4x	C20 Mtk(S)  8x	C15 Ydbf(S)  2x
Z22 Ma Ay002  5x	B15 15mm (black)  10x	A69 P.D.  10x	A06 18mm  C1-20x C2-12x	A25 ARK.PL  12x



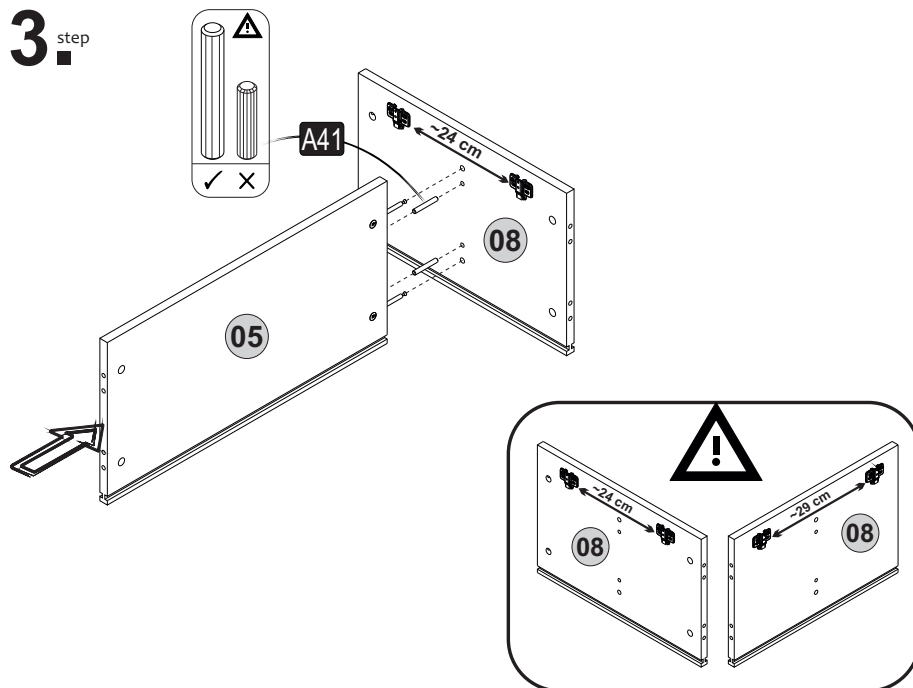
1. step



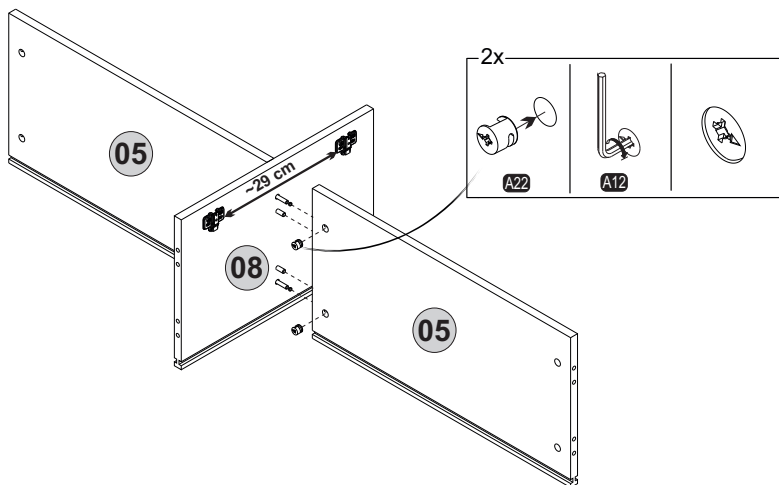
2. step



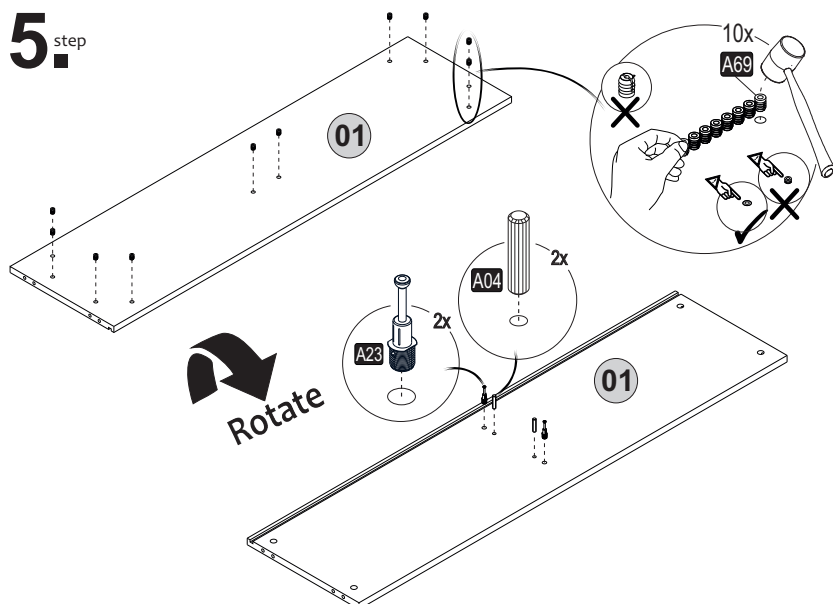
3. step



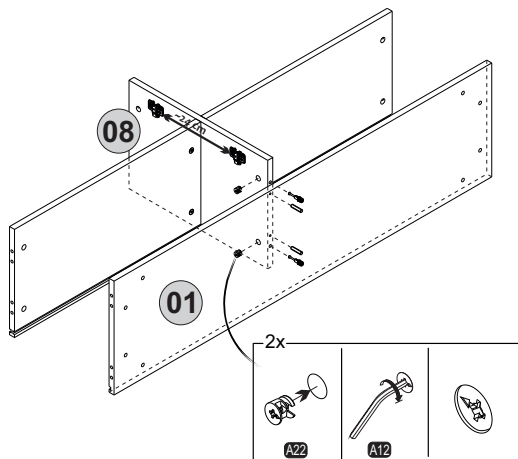
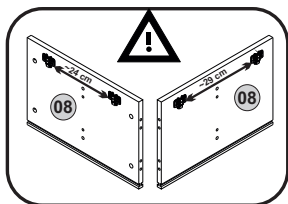
4^{step}



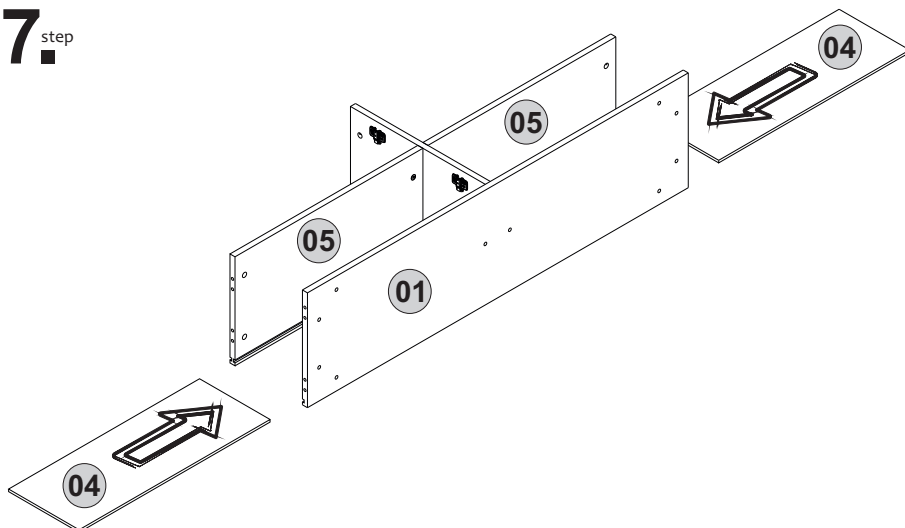
5^{step}



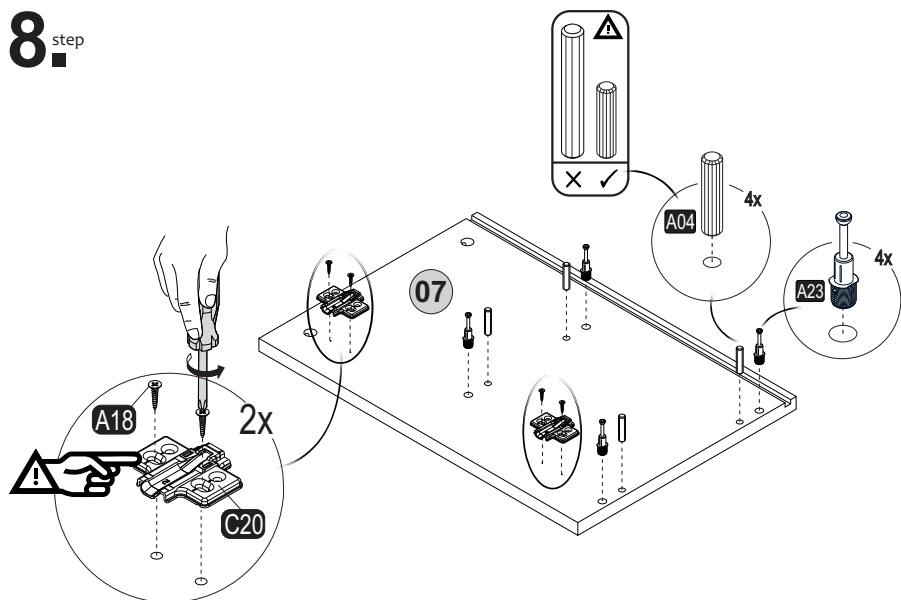
6^{step}



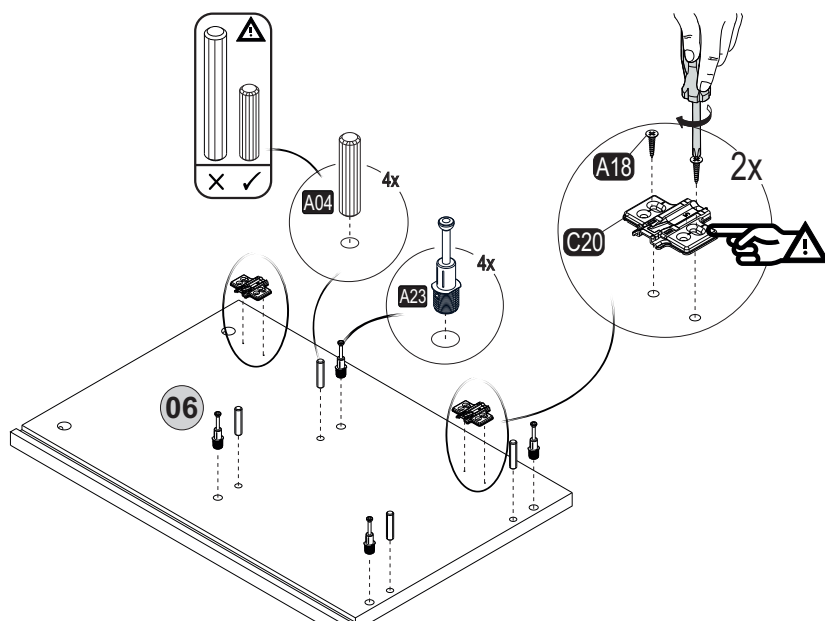
7^{step}



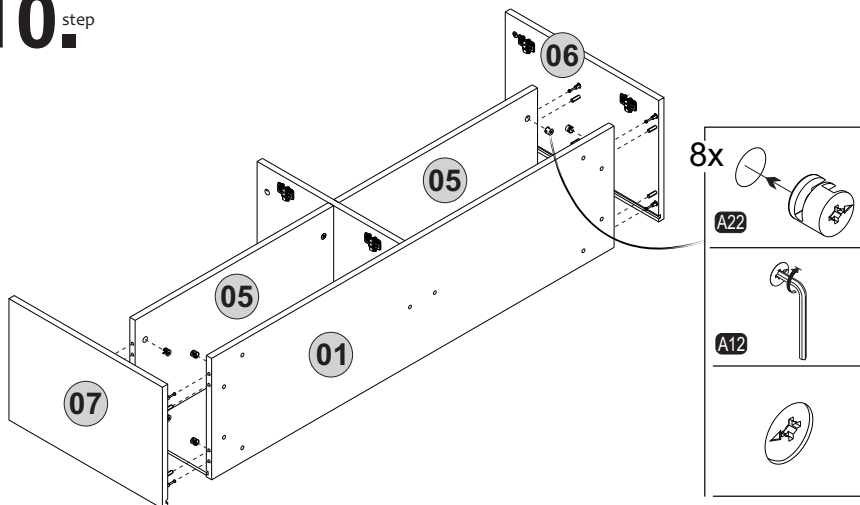
8.^{step}



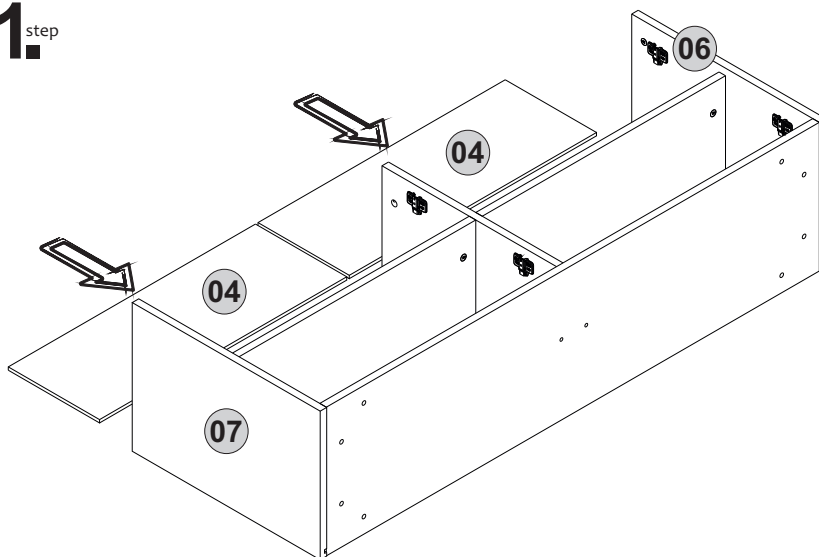
9.^{step}



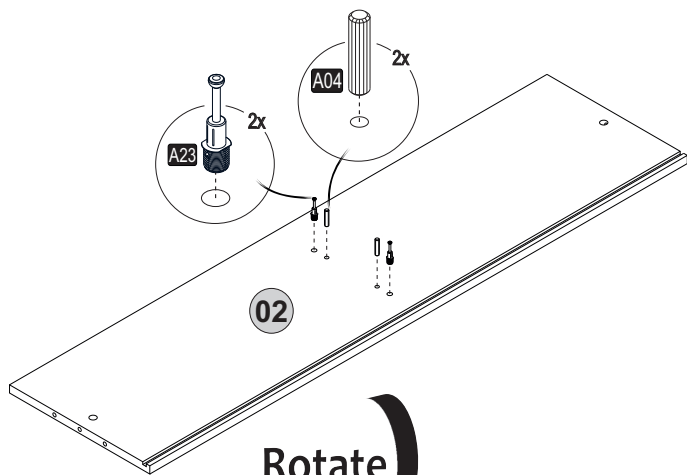
10.^{step}



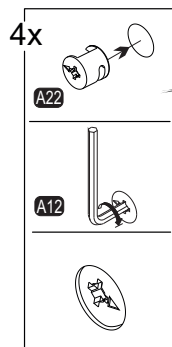
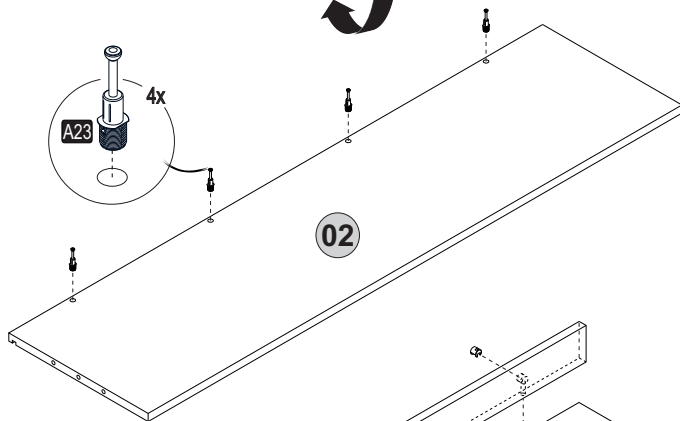
11.^{step}



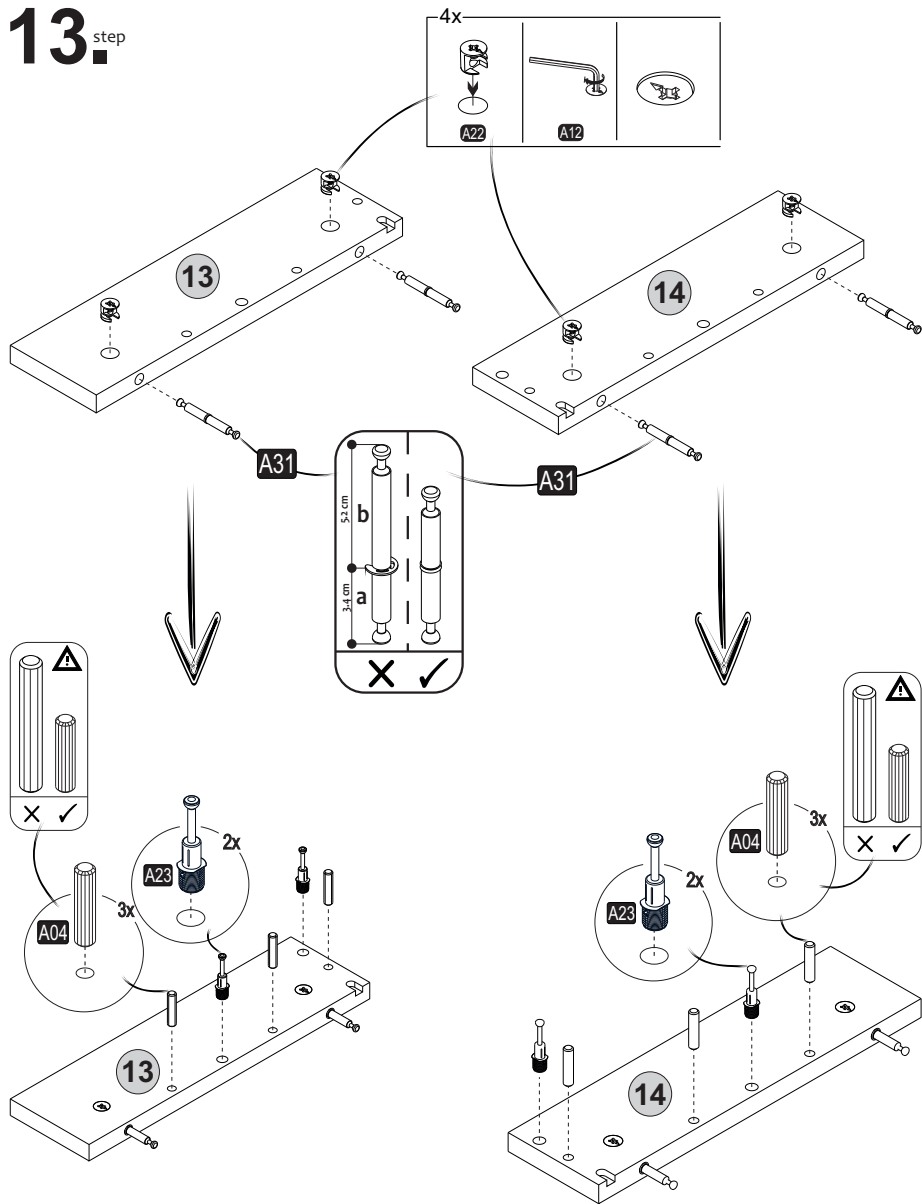
12.^{step}



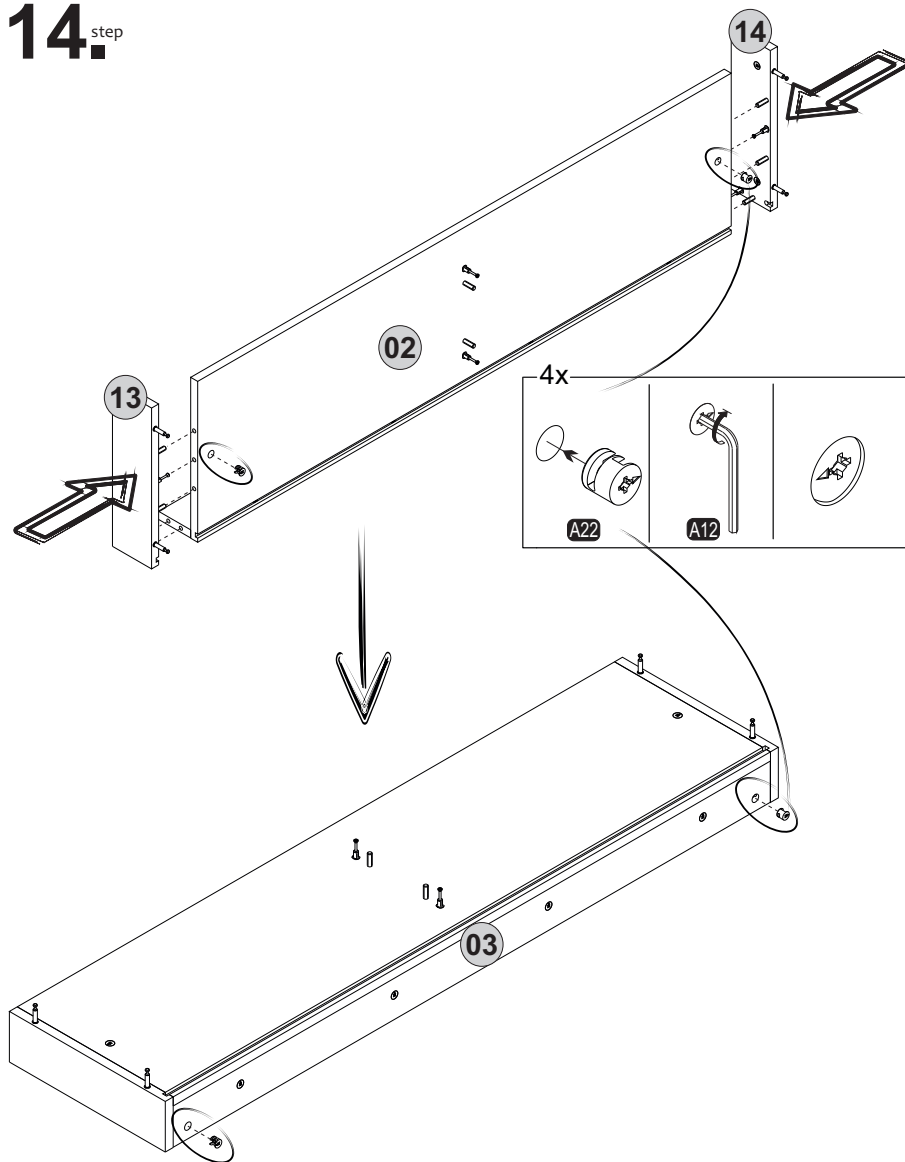
Rotate



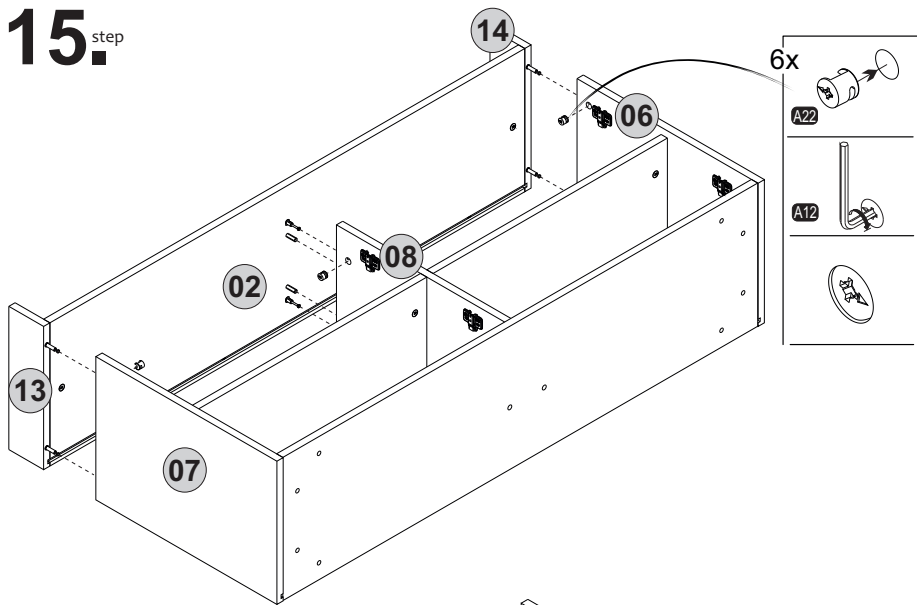
13.^{step}



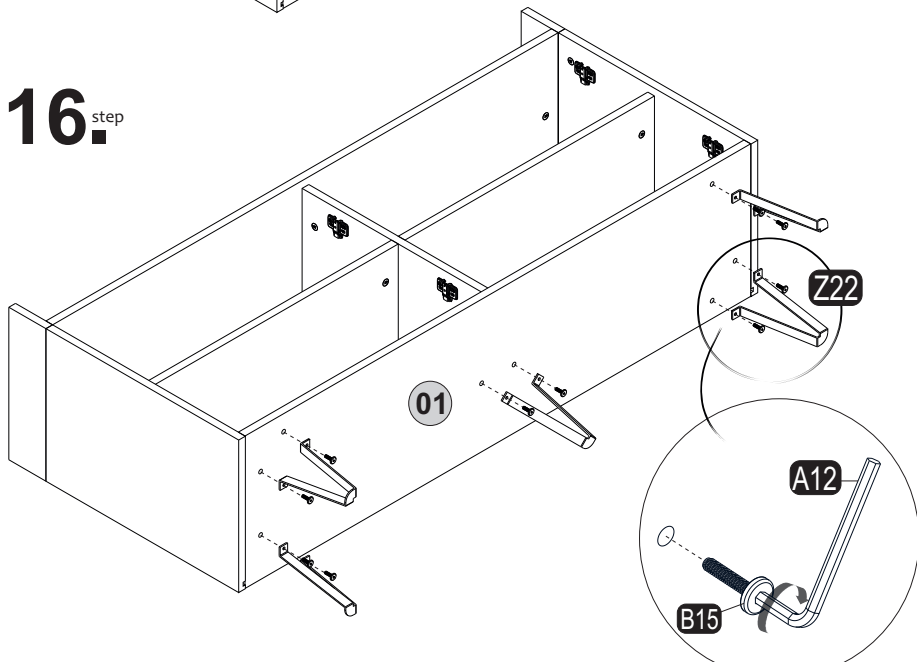
14.^{step}



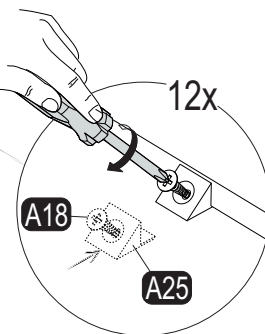
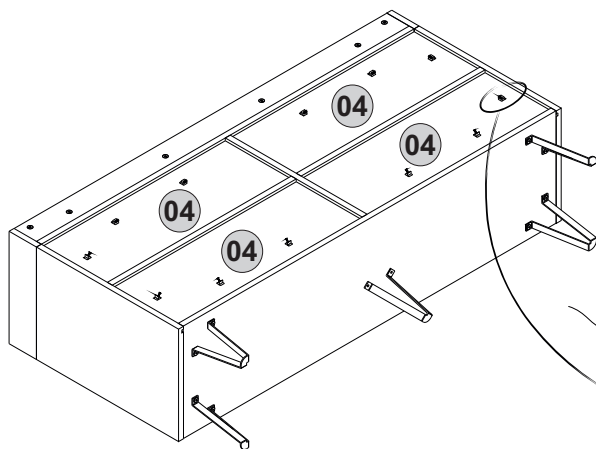
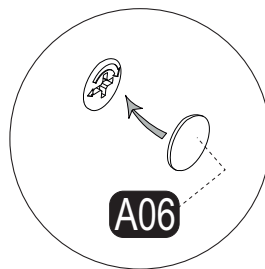
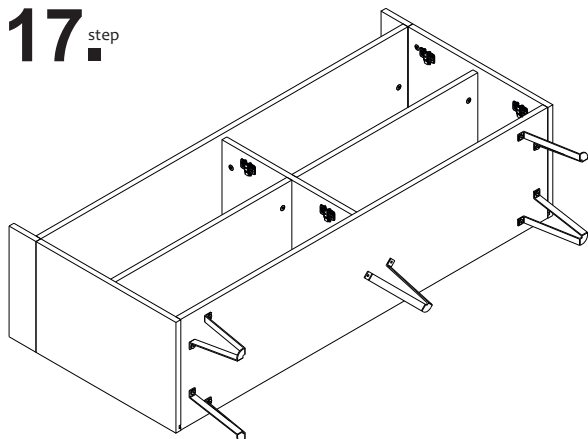
15._{step}



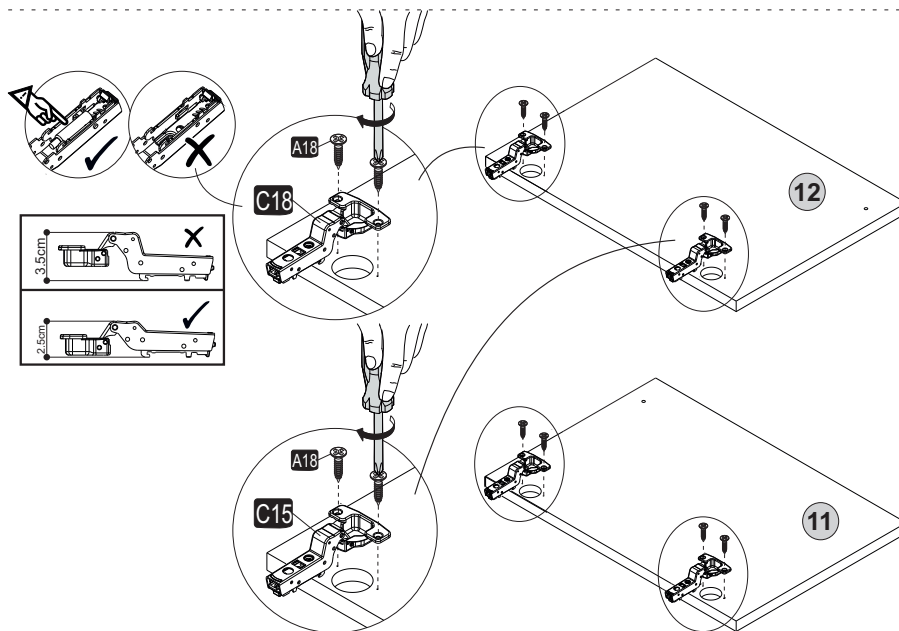
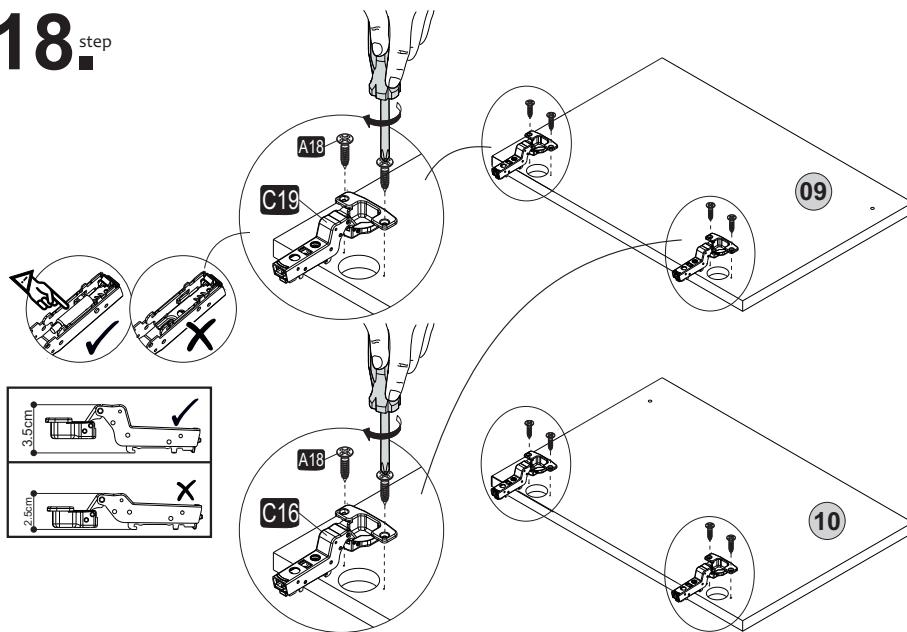
16._{step}



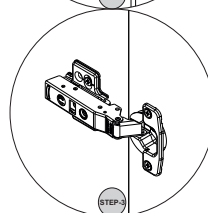
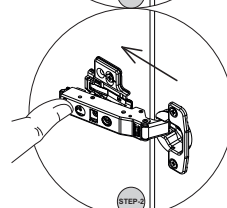
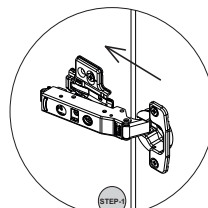
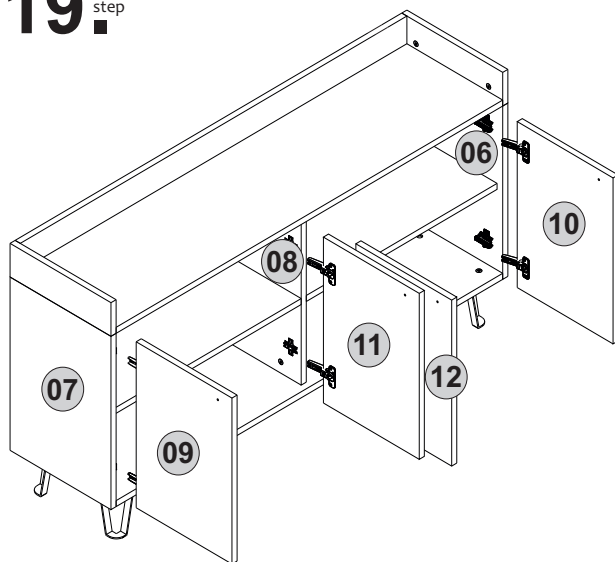
17.^{step}



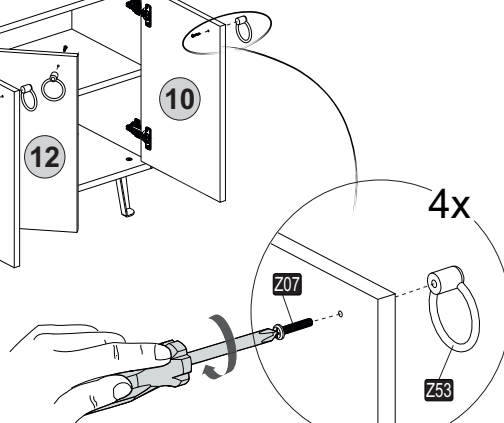
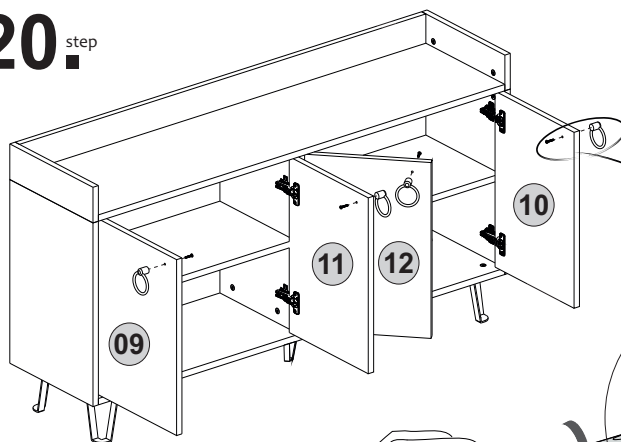
18.^{step}



19.^{step}



20.^{step}



21.^{step}

