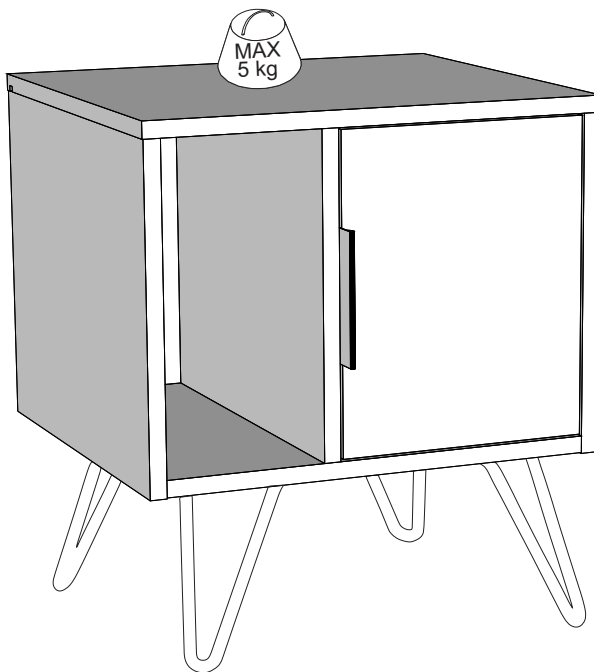


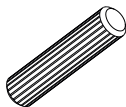
GP037-0081,2



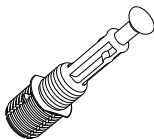
ATTENTION !!

Minifix is the main connection material used in our products.
Before starting assembly, please check the drawings below.

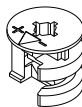
A04



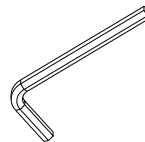
A23



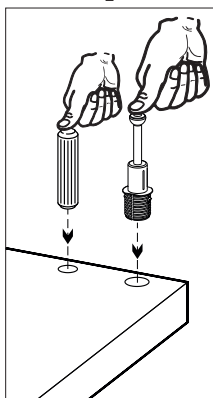
A22



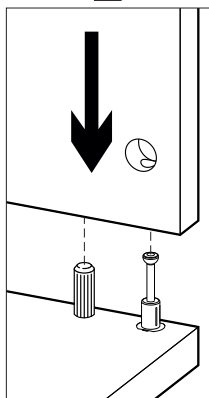
A12



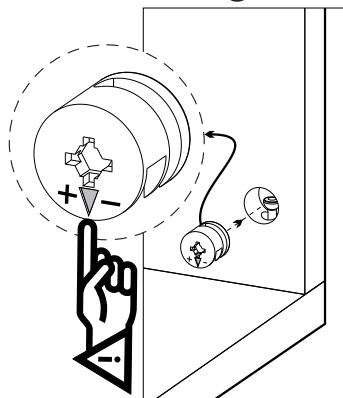
1



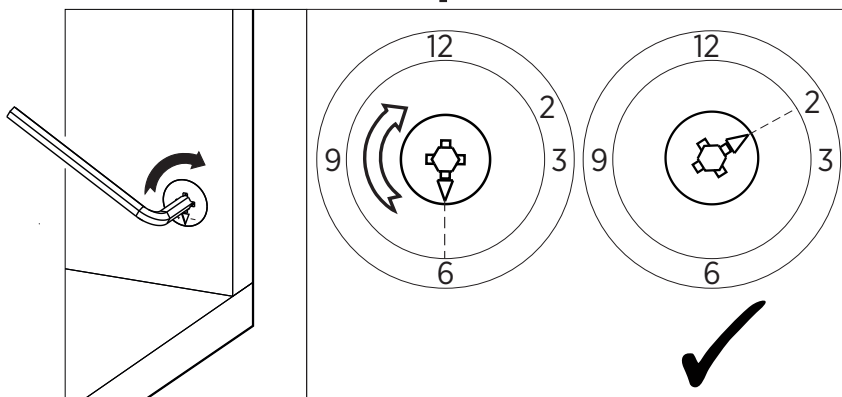
2



3

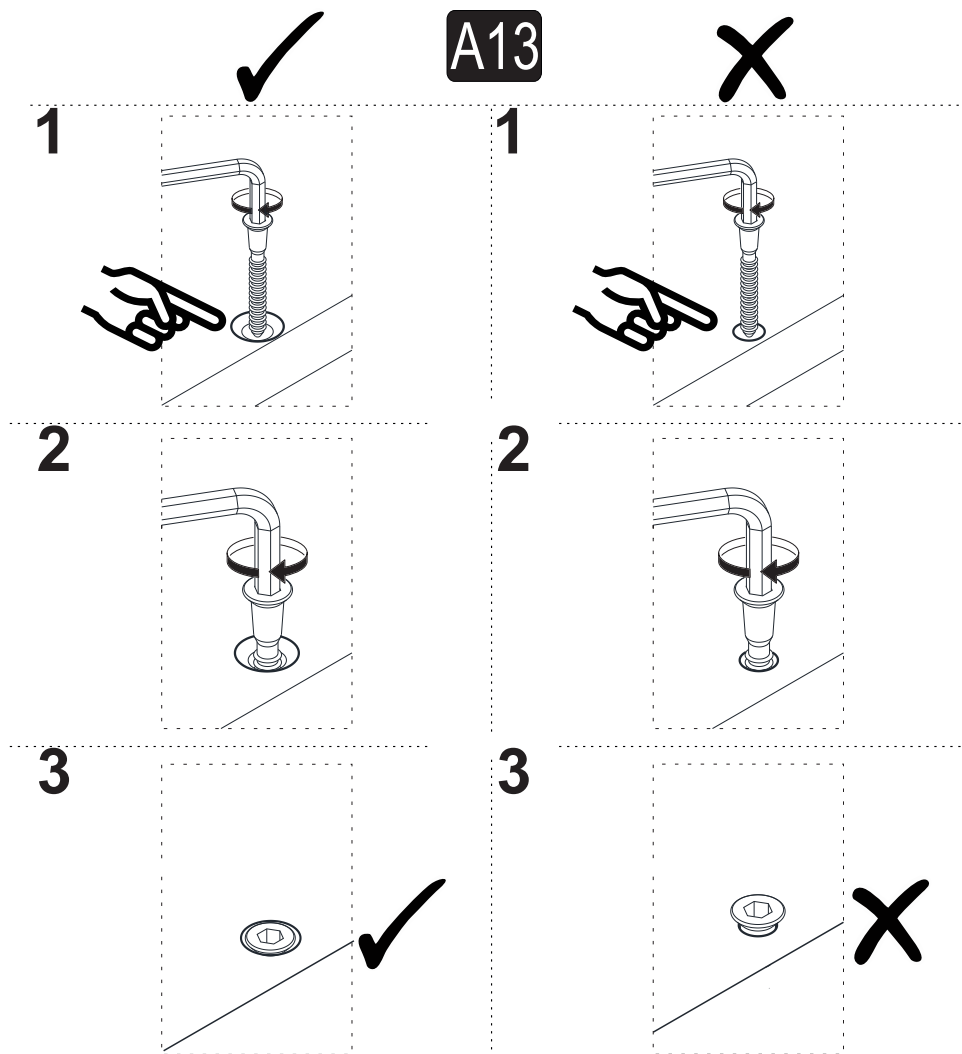


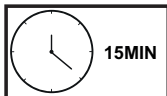
4



ATTENTION !!

Our products are screw system. Before you proceed with installation try to understand the following




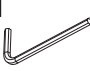














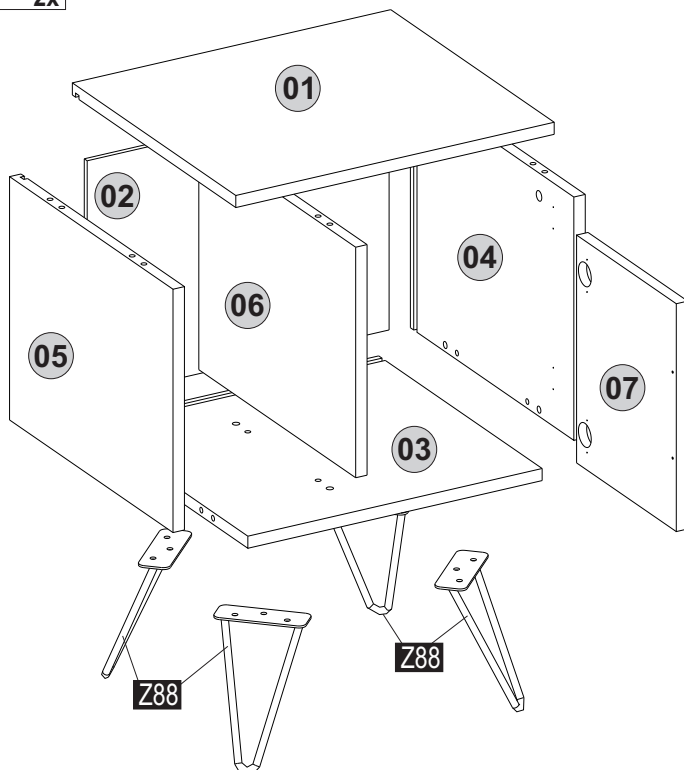


Follow the installation steps in the order as shown.
Position the parts as shown in the installation guide steps.

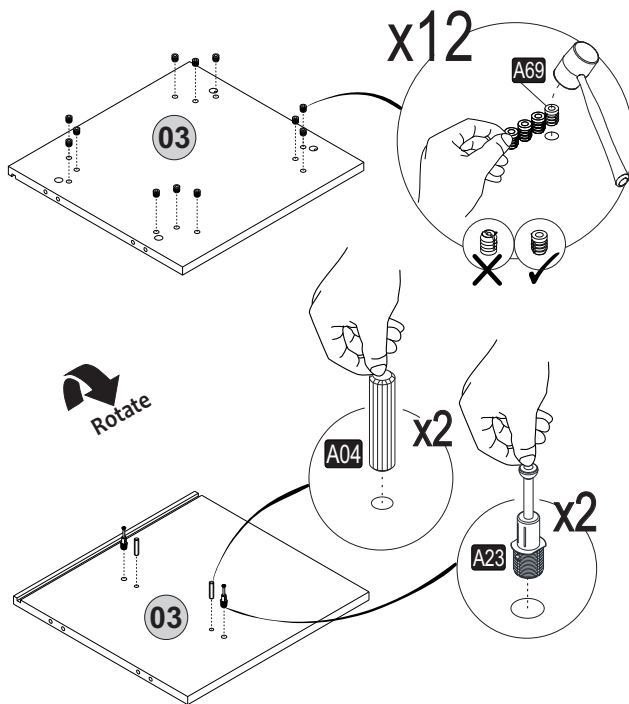


HARDWARE LIST

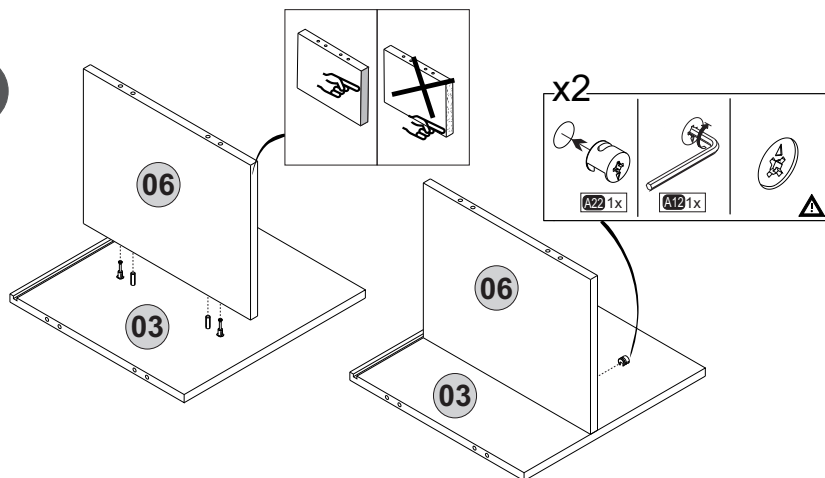
A22  Minifix k18 12x	A23  Minifix M10 12x	A04  Ø8 12x	A12  Allen 1x	A25  ARK.PL 3x
Z88  MBA 4x	B15  15 (black)mm 12x	Z51  K128mm (black) 1x	A18  3,5x18 15x	A06  C1-12x 18mm
A69  P.D. 12x	A48  Raf Piml 1x	C16  Sdb(S) 1x	C19  SdbF(S) 1x	C20  Mtk(S) 2x
A50  3,5x16 (Black) 2x				



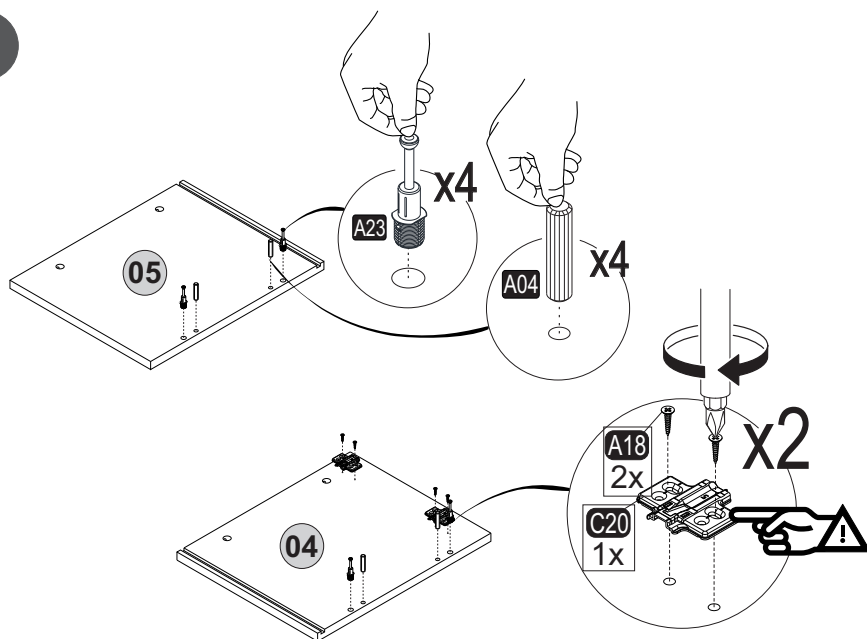
1



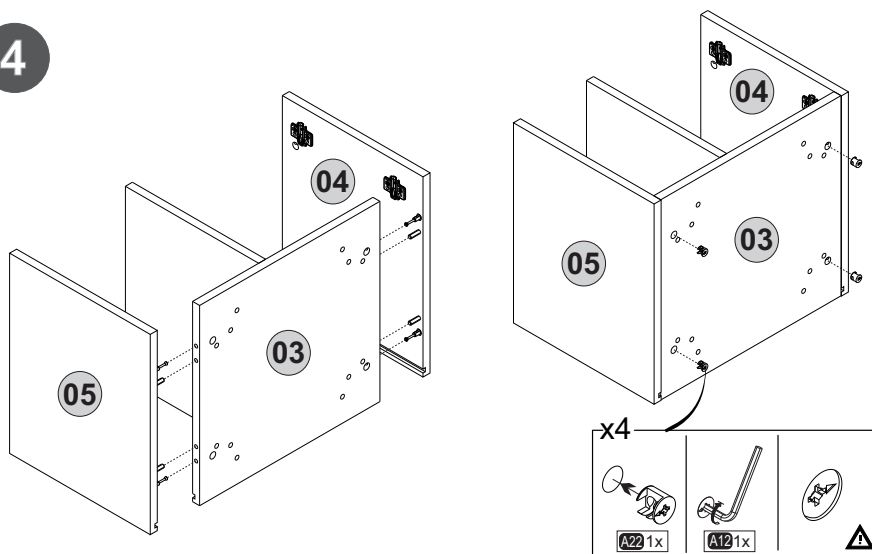
2



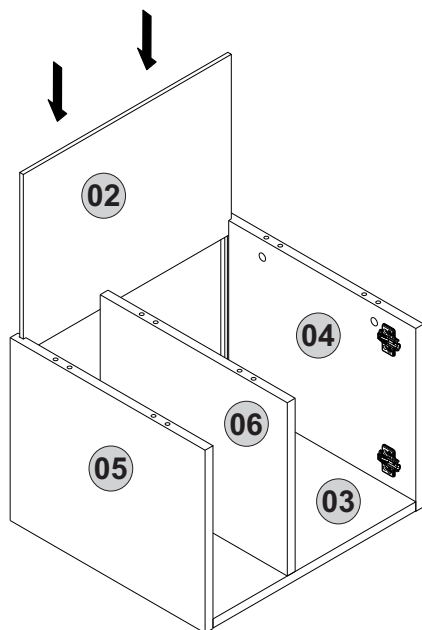
3



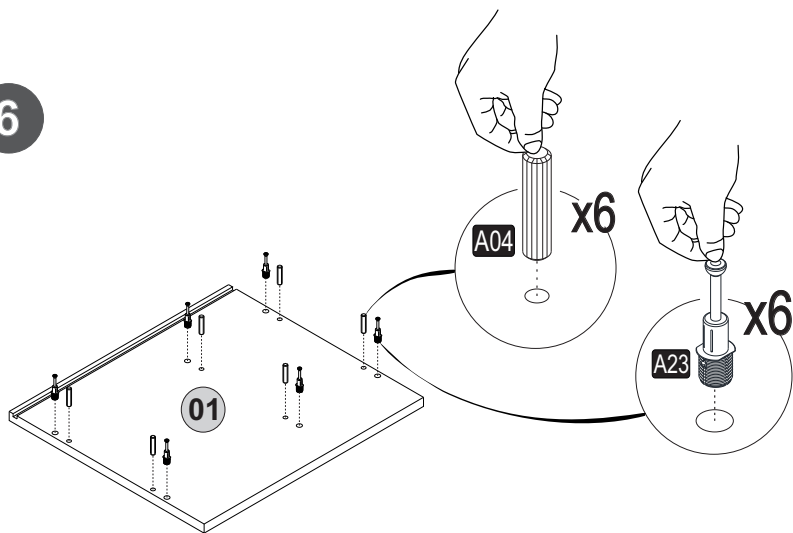
4



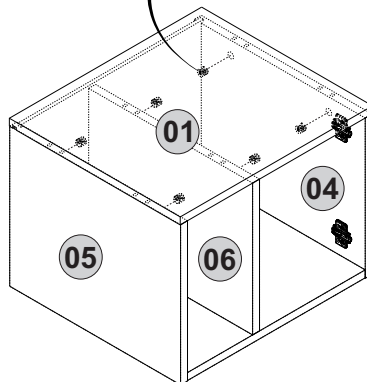
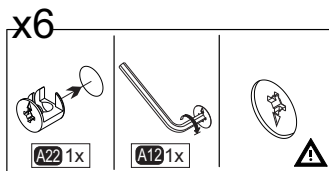
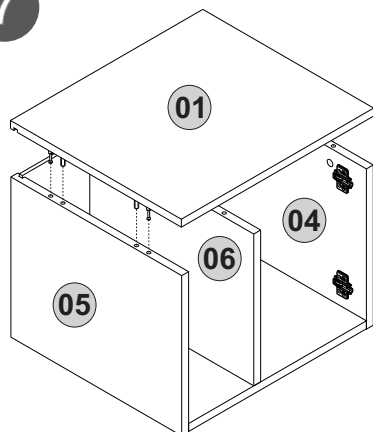
5



6

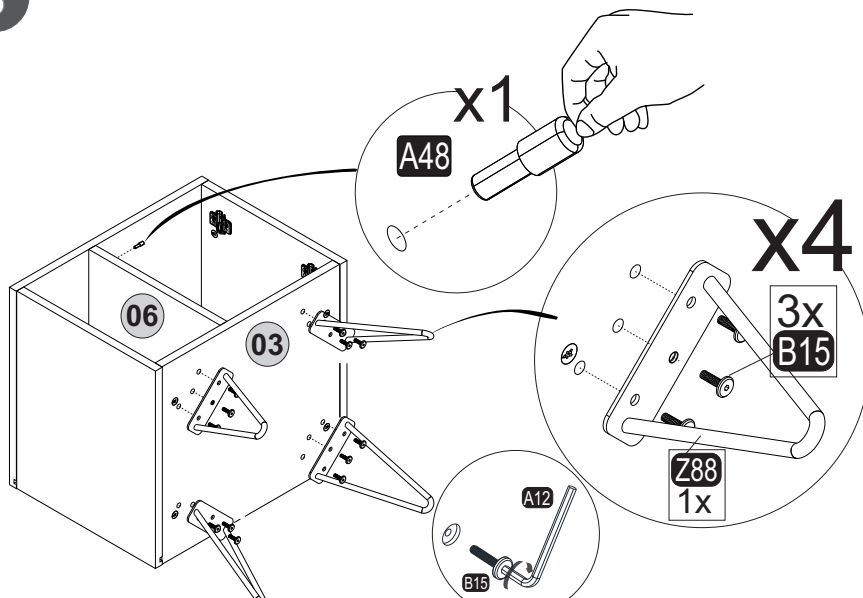


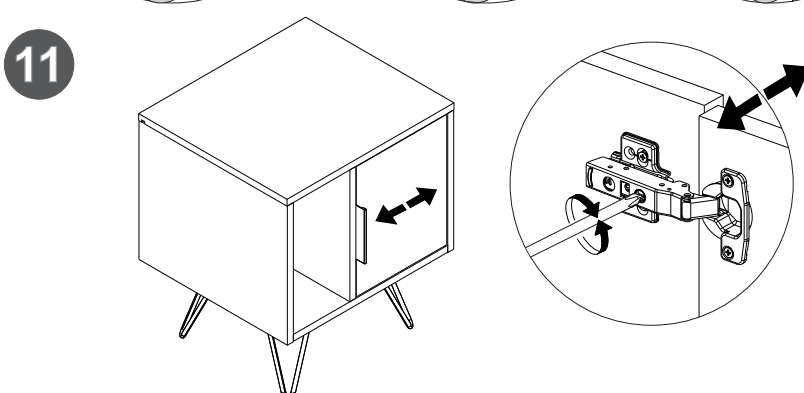
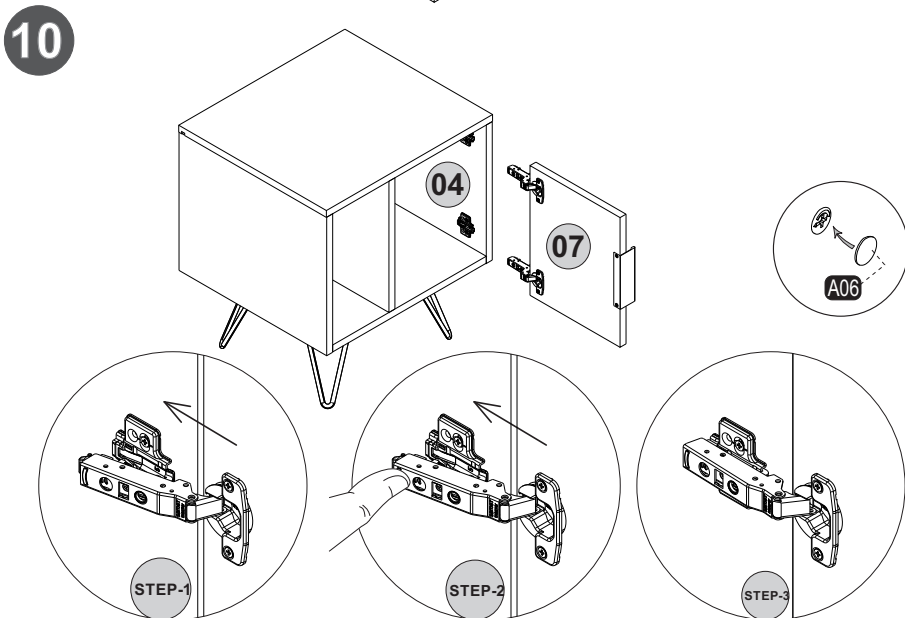
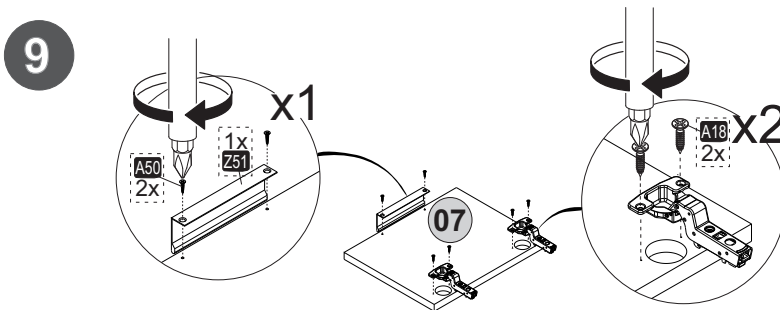
7



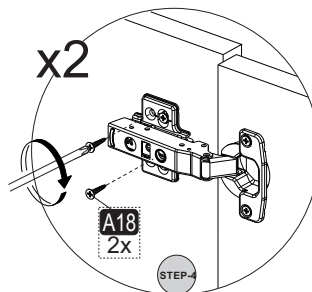
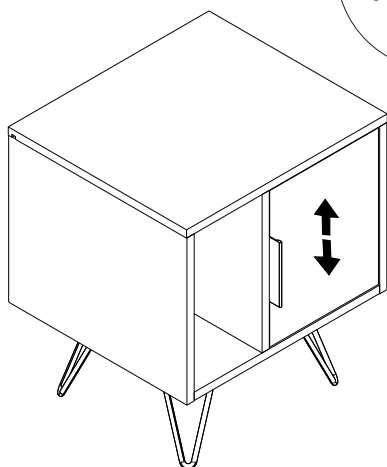
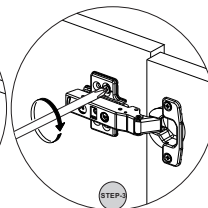
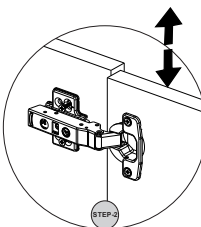
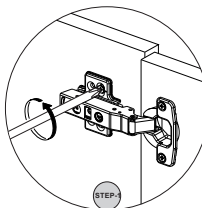
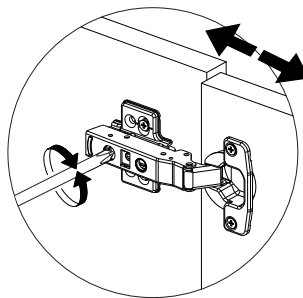
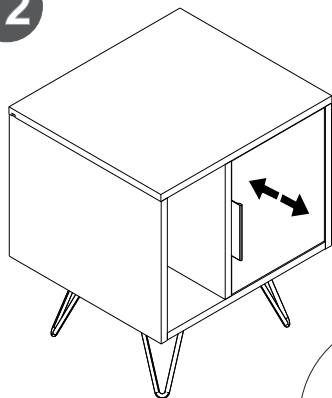
Rotate

8





12



13

