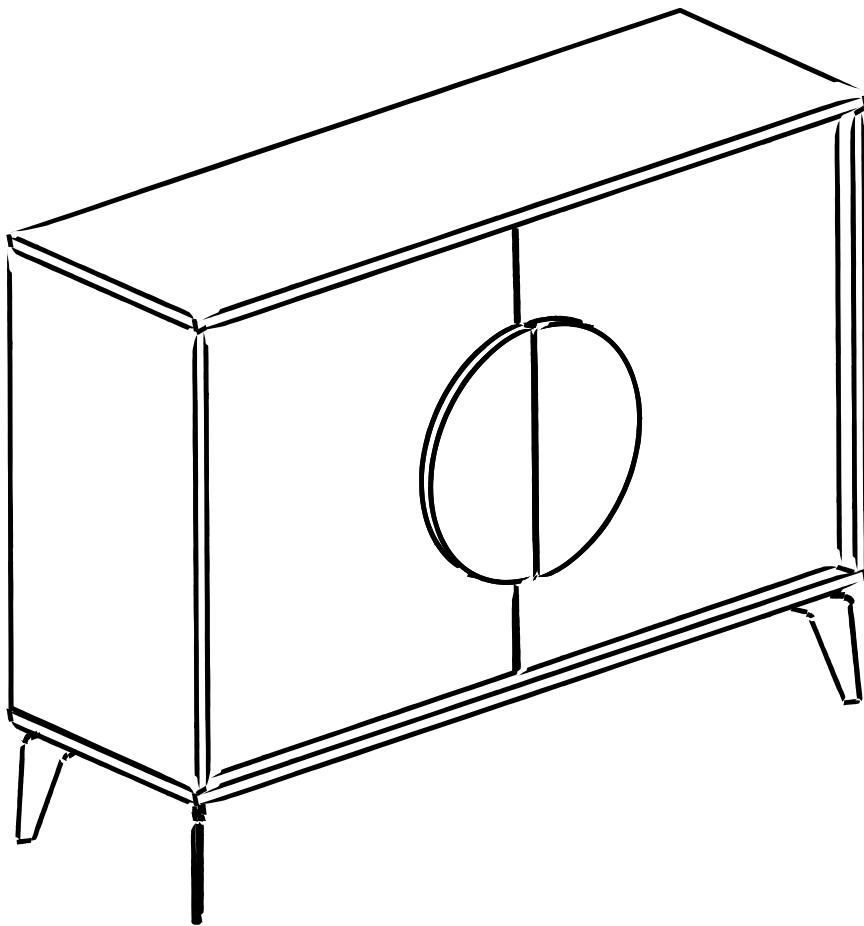


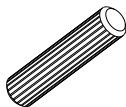
**GP037-0082,3**



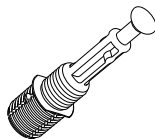
# ATTENTION !!

Minifix is the main connection material used in our products.  
Before starting assembly, please check the drawings below.

A04



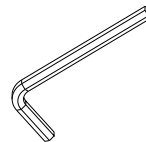
A23



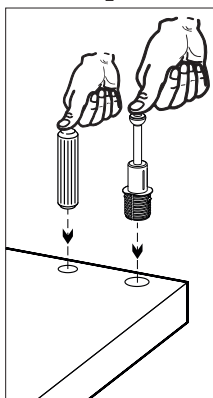
A22



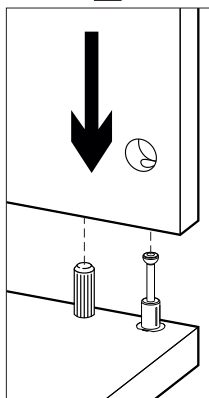
A12



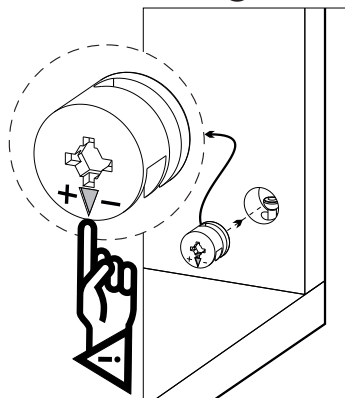
1



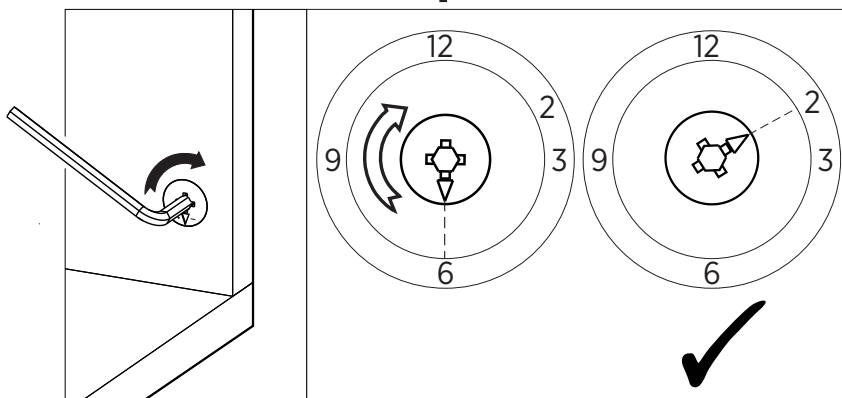
2



3

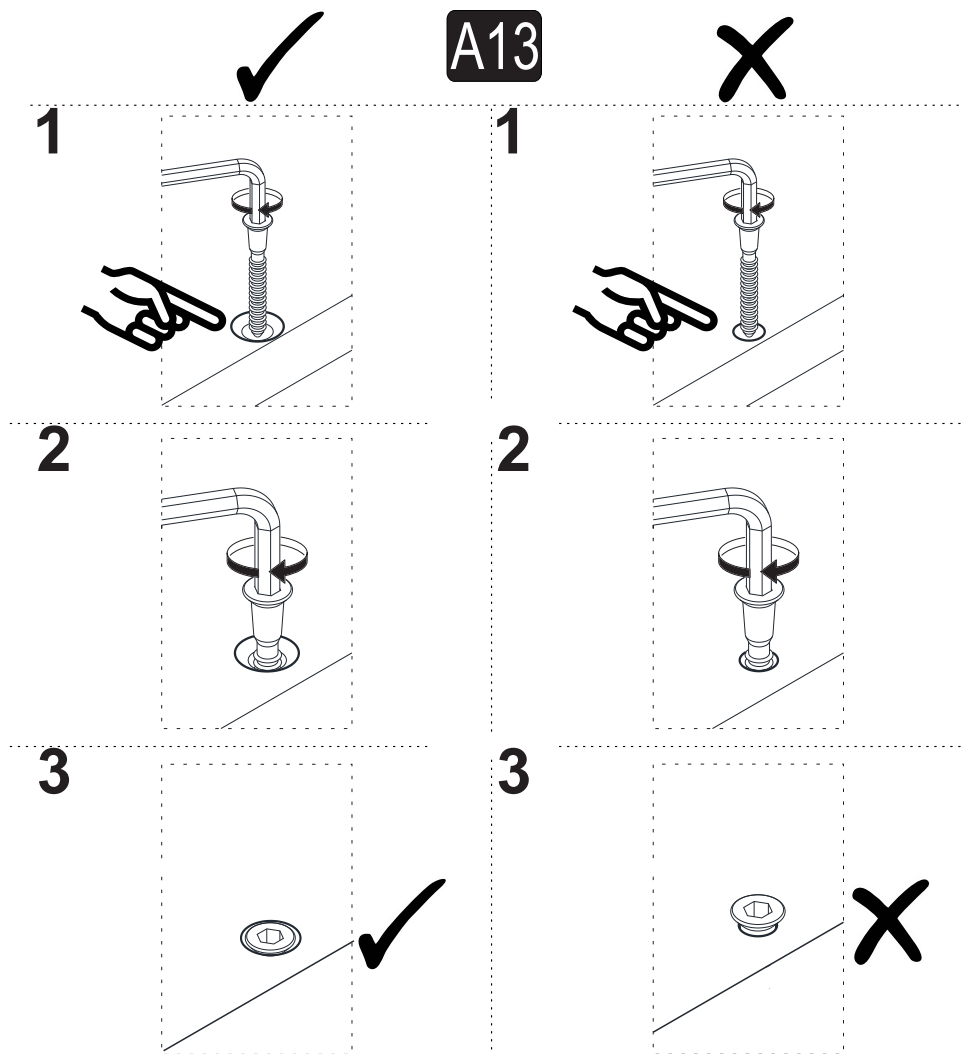


4



# ATTENTION !!






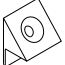









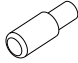

Our products are screw system. Before you proceed with installation try to understand the following

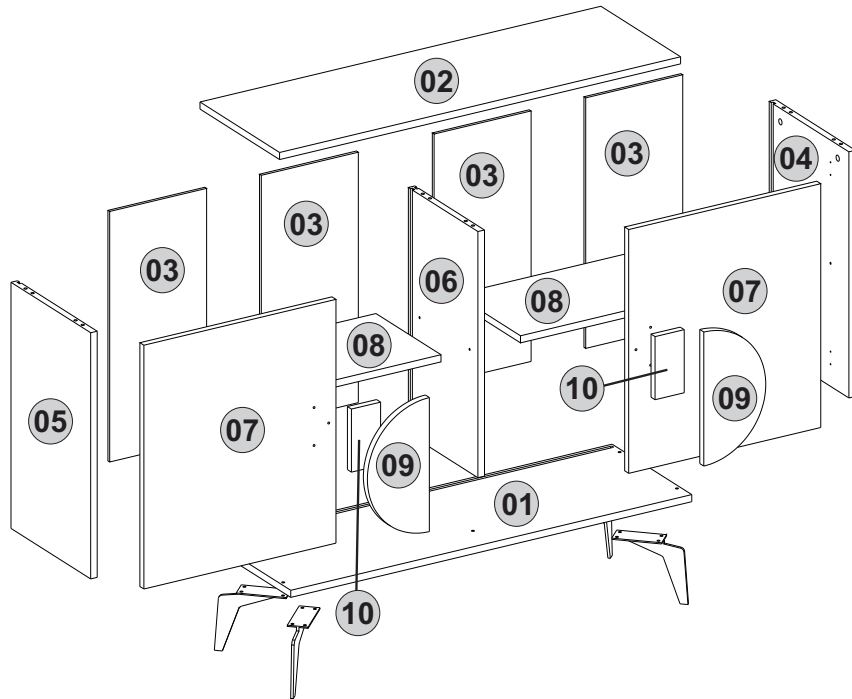


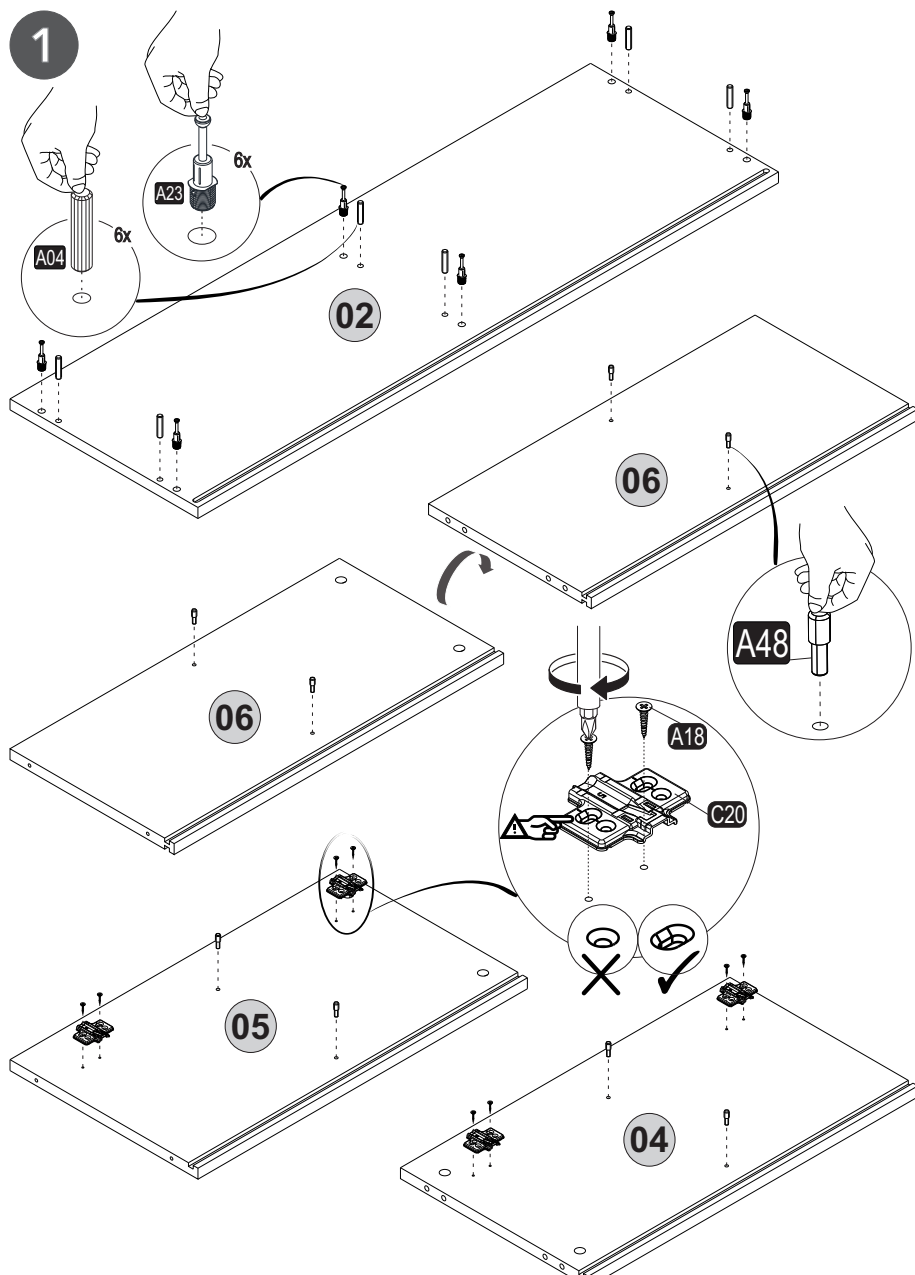
Follow the installation steps in the order as shown.  
Position the parts as shown in the installation guide steps.



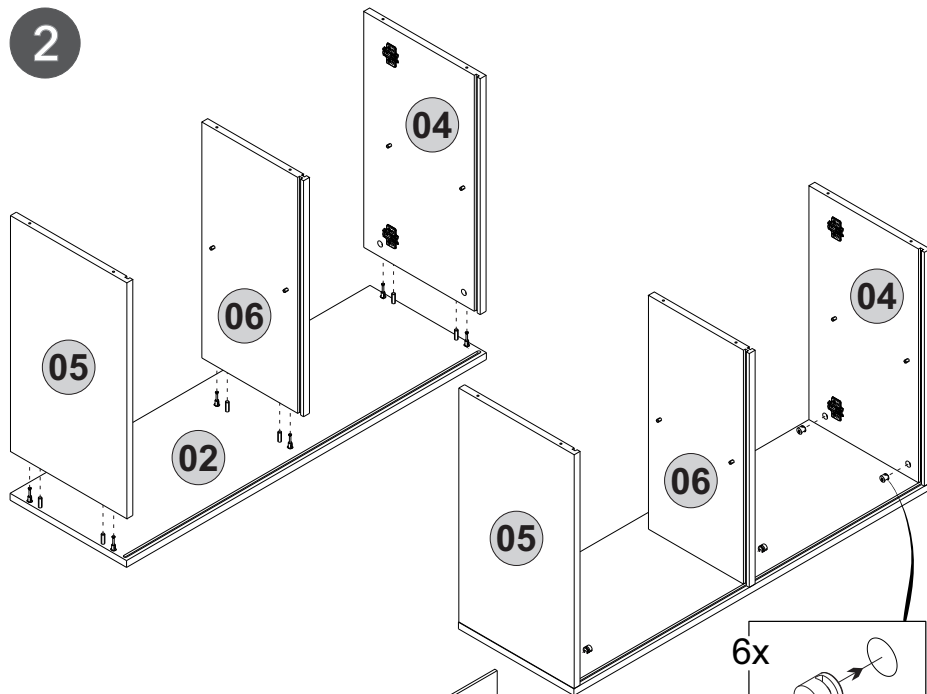
## ACCESSORY LIST

<b>A22</b> Minifix k18  6x	<b>A23</b> Minifix M10  6x	<b>A04</b> Ø8  6x	<b>A12</b> Allen  1x	<b>A13</b> 50mm  6x
<b>A25</b> ARK.PL  16x	<b>A18</b> 3,5x18  40x	<b>C16</b> Sdb(S)  2x	<b>C19</b> SdbF(S)  2x	<b>C20</b> Mtk(S)  4x
<b>Z71</b> LEG  4x	<b>B15</b> 15 (black)mm  16x	<b>A69</b> P.D.  16x	<b>A75</b> 5x13  6x	<b>A17</b> 4x50  6x
<b>A48</b> Raf Pimi  8x	<b>A06</b> 18mm  C1-12x C2-06x			

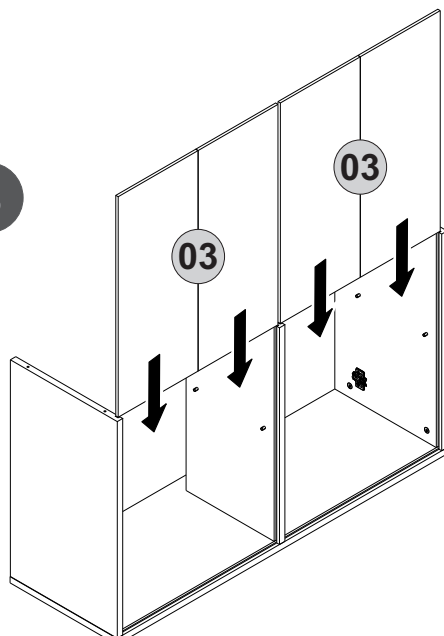




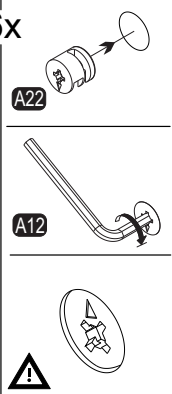
2

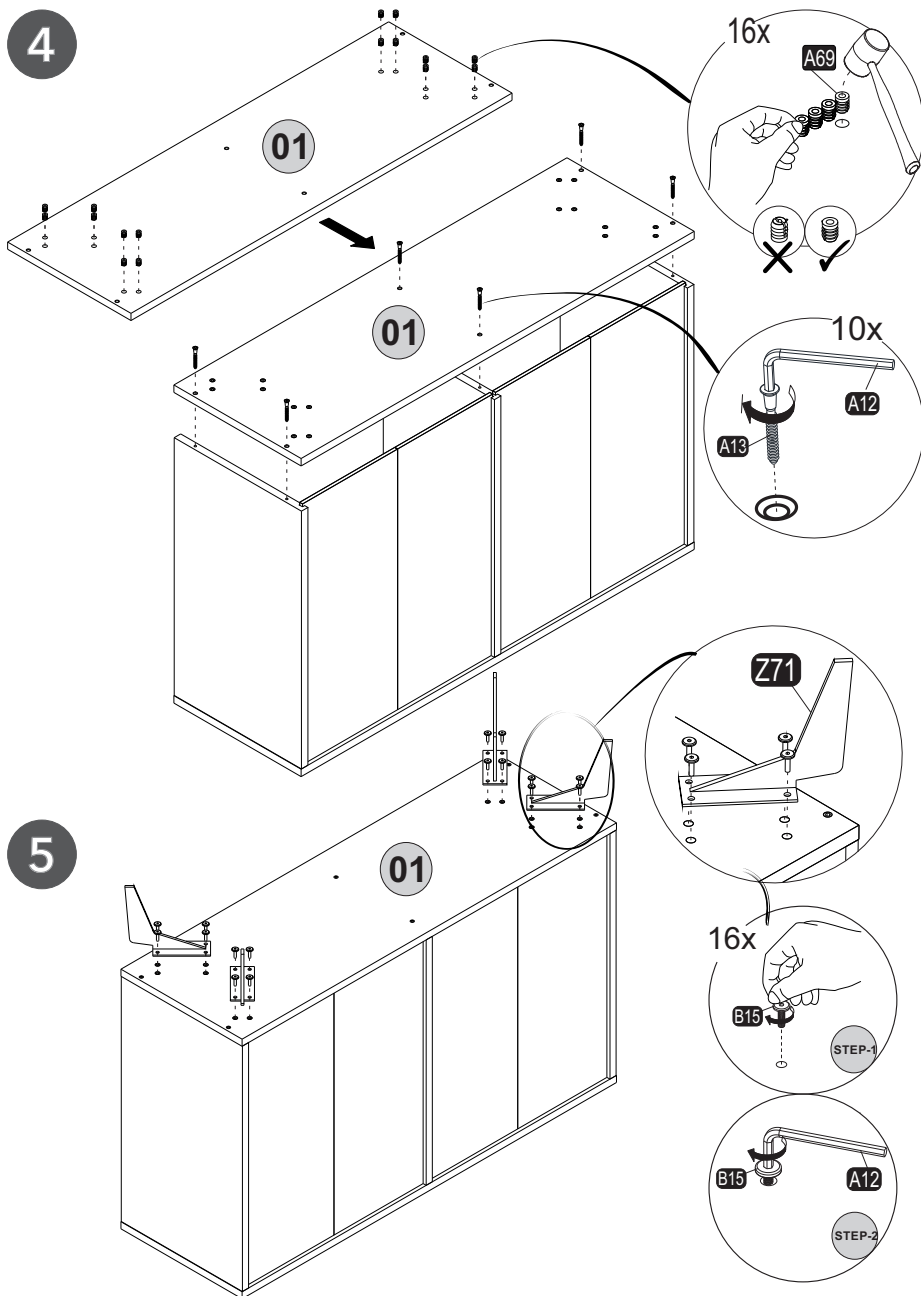


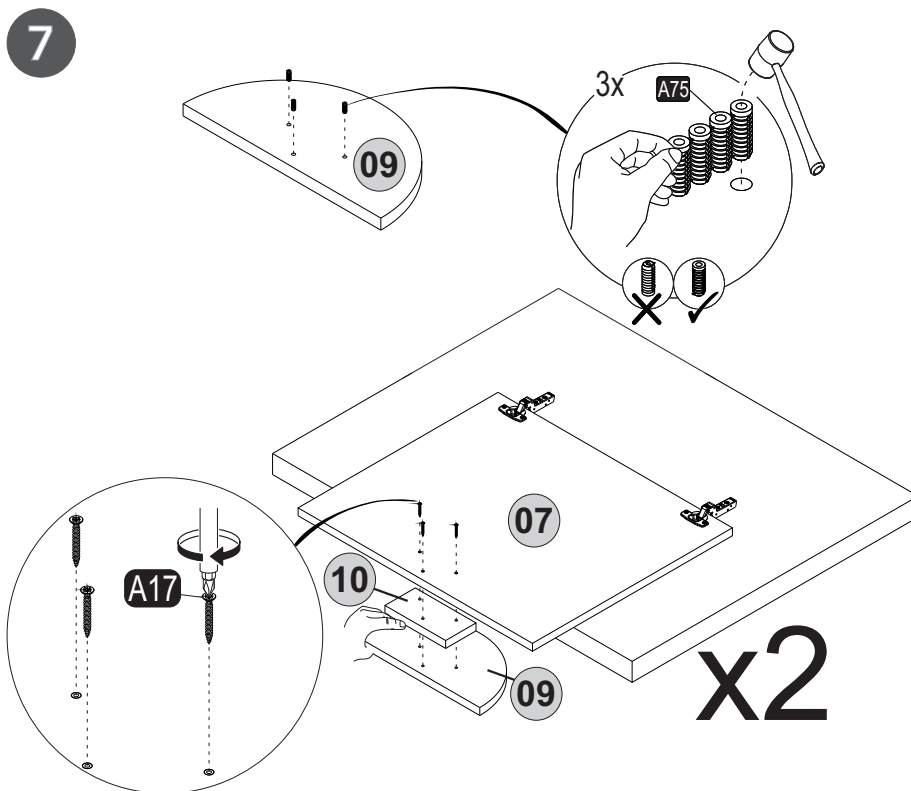
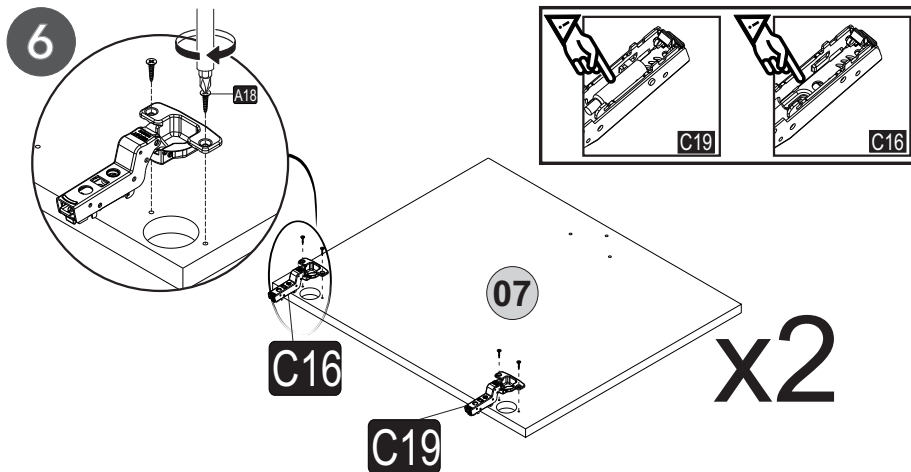
3



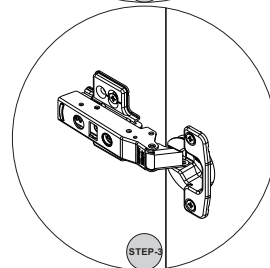
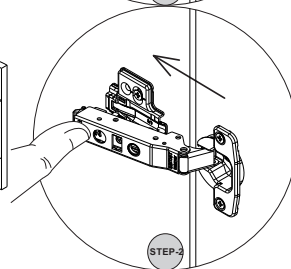
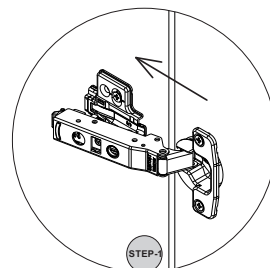
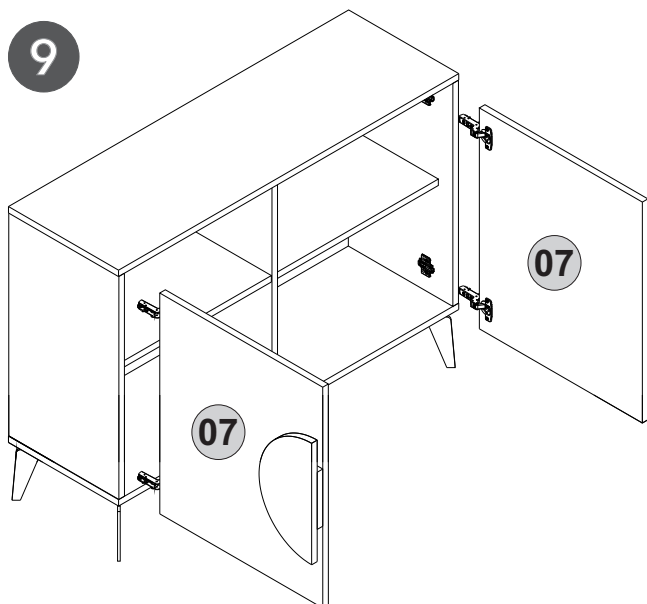
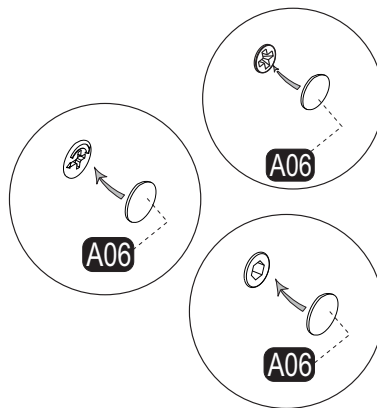
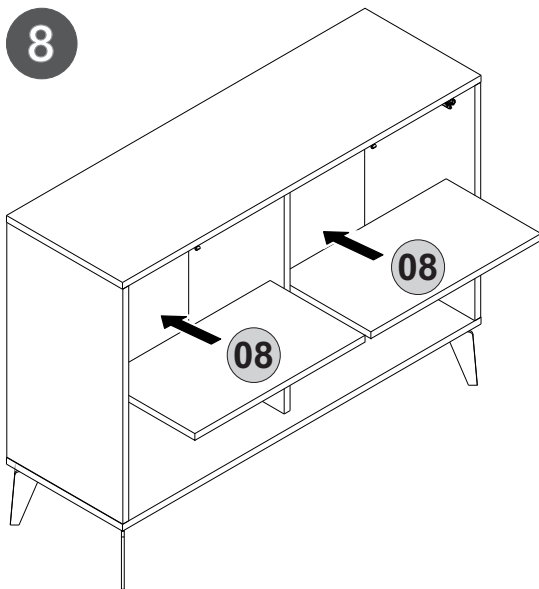
6x



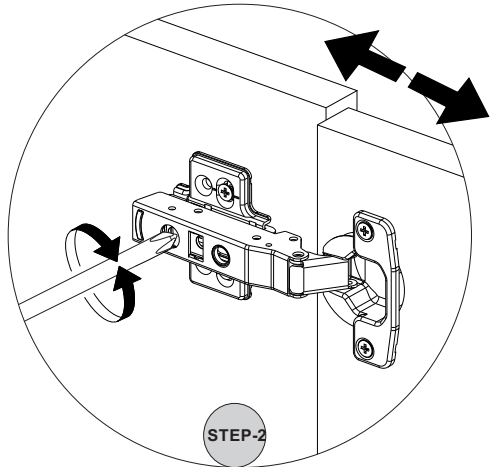
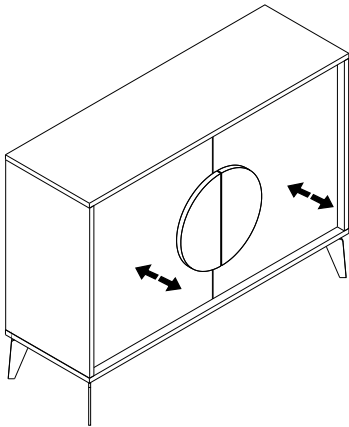
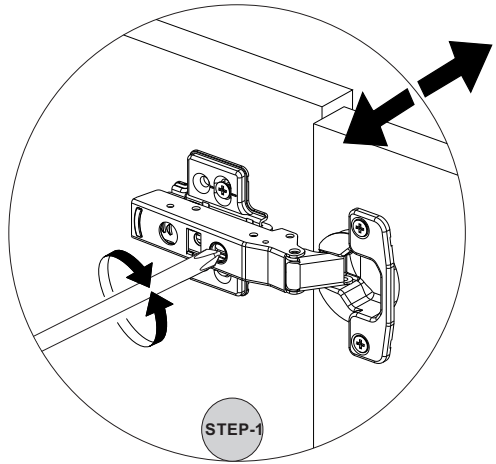
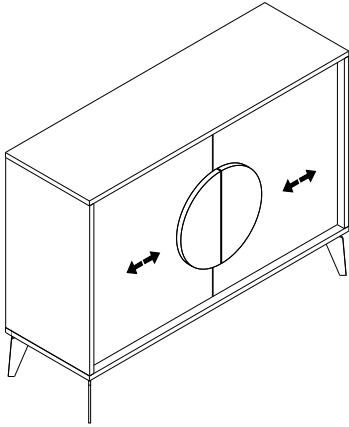




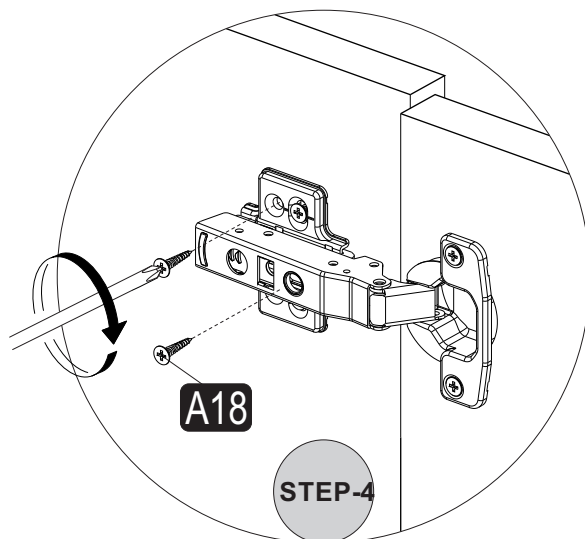
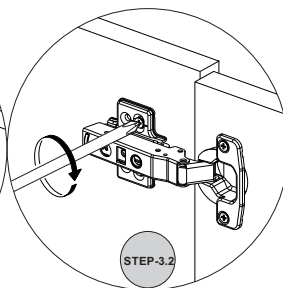
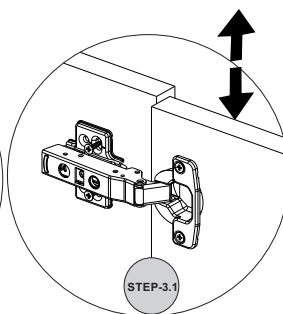
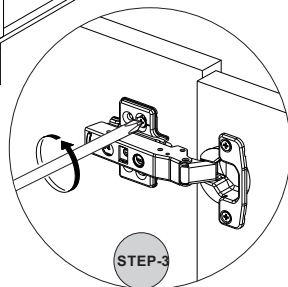
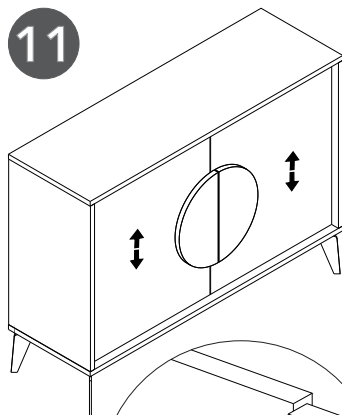




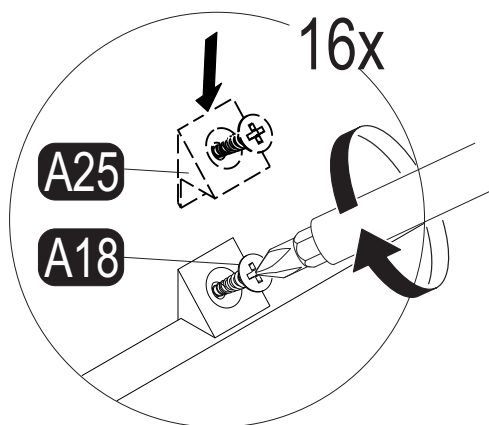
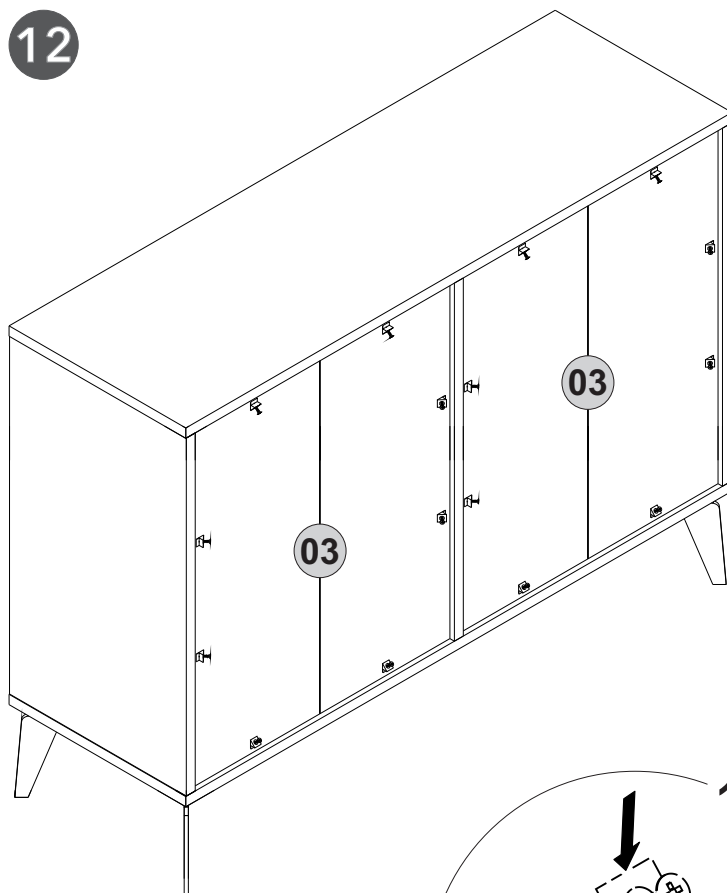
10

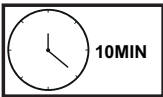


11



12










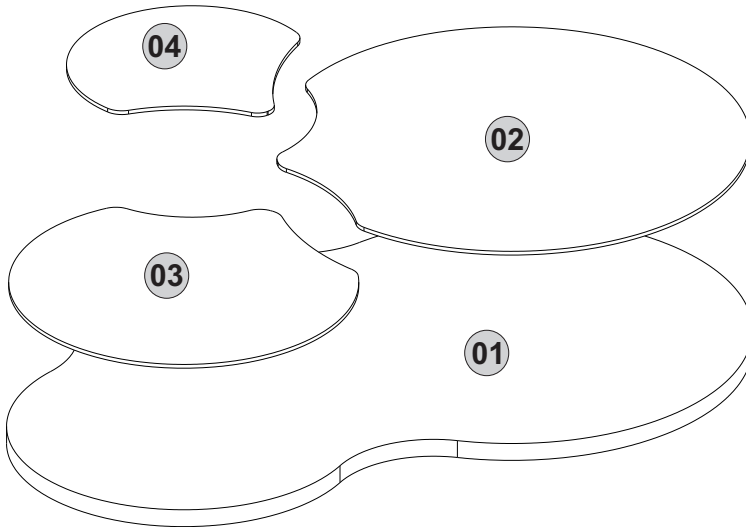
10MIN

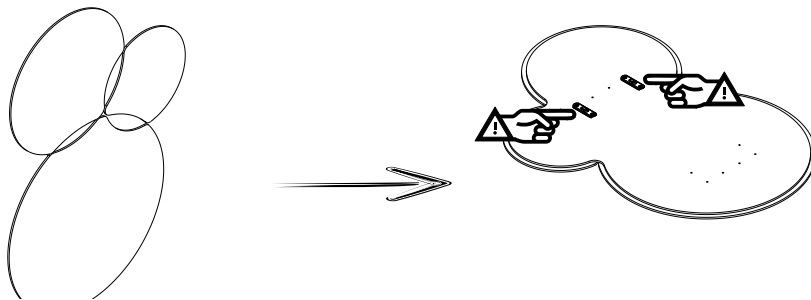
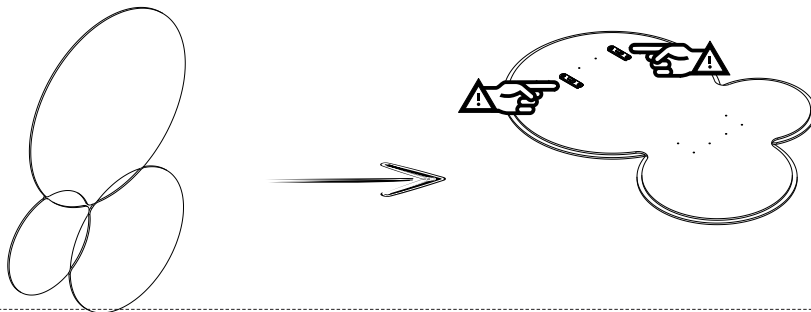
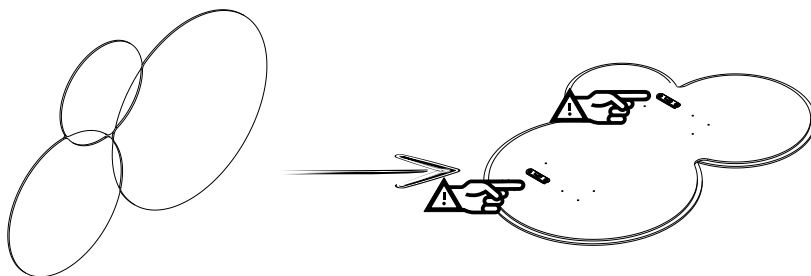
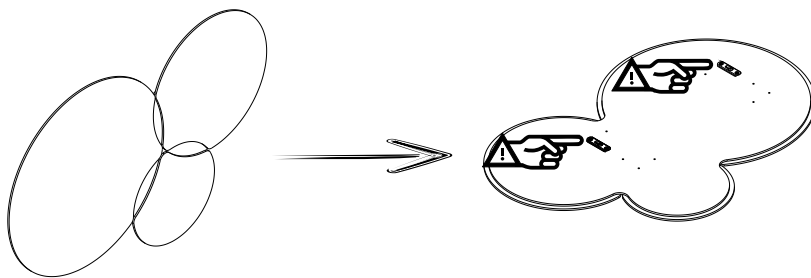
Follow the installation steps in the order as shown.  
Position the parts as shown in the installation guide steps.



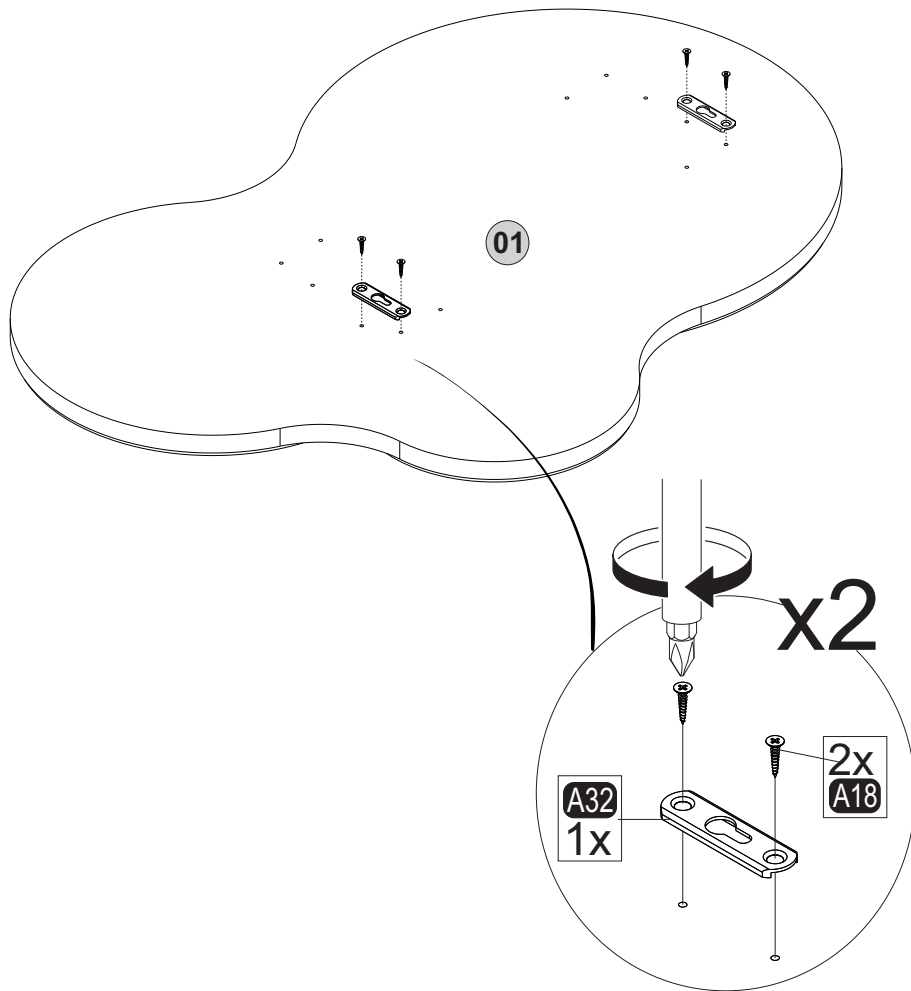
## HARDWARE LIST

<b>A32</b>  2x	60/16 <b>A18</b>  4x	3,5x18 <b>Z18</b>  2x	Gbdy <b>A16</b>  2x	DbØ8 <b>A17</b>  2x	4X50
---	--	---	---	--	------

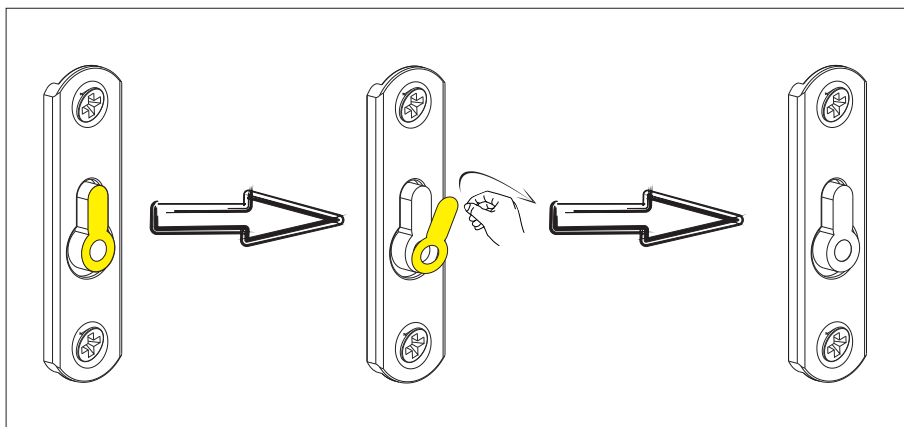
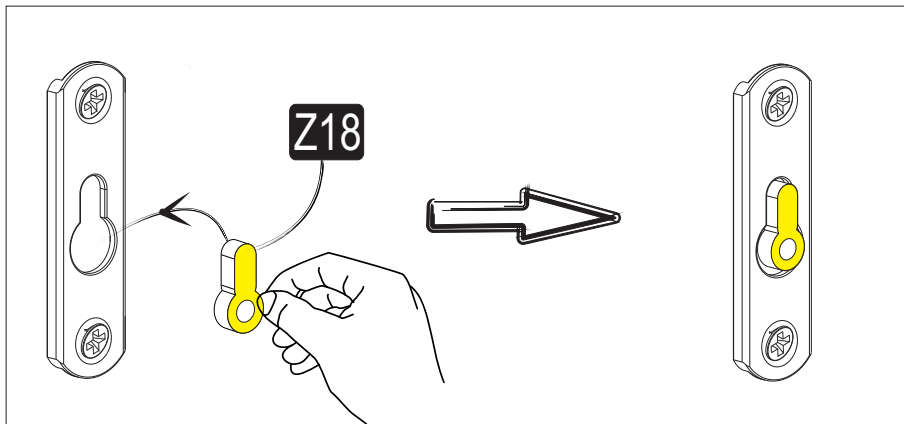




1

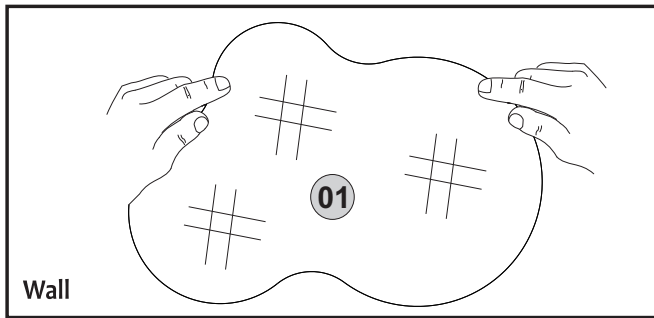


2  
x2

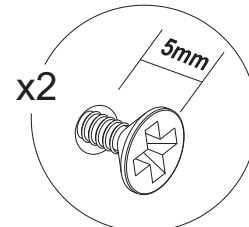
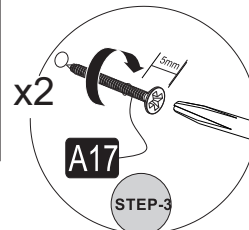
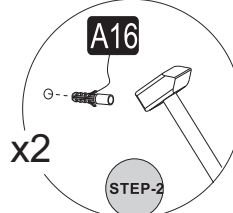
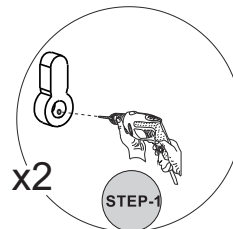
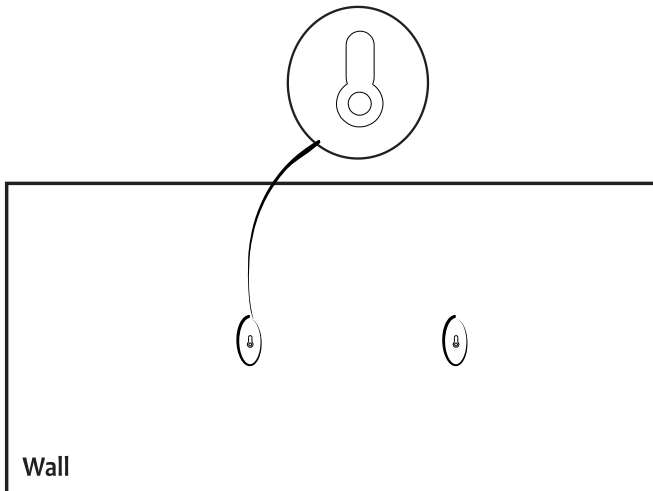




3



4



5

