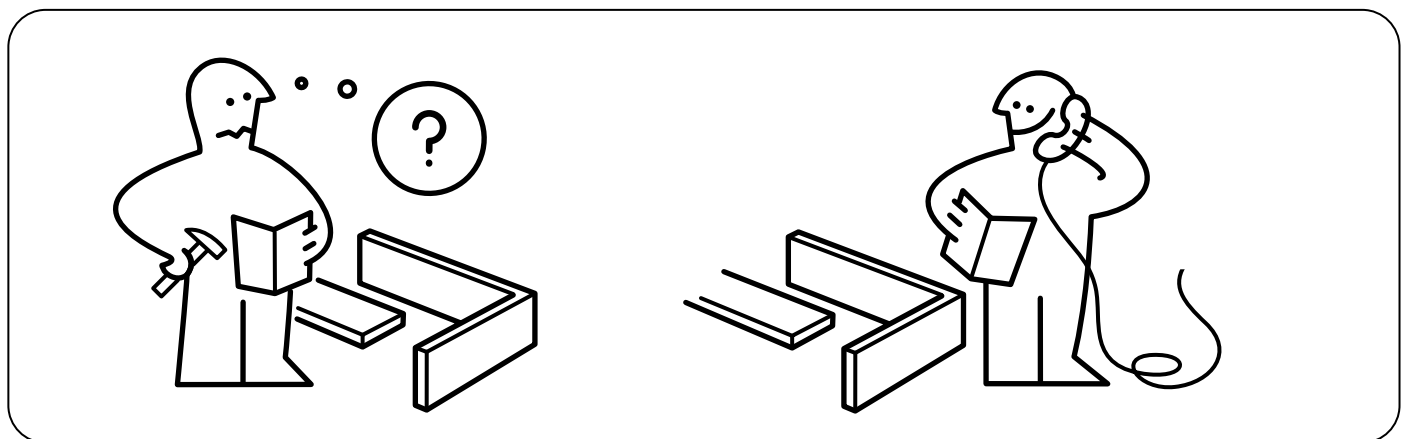
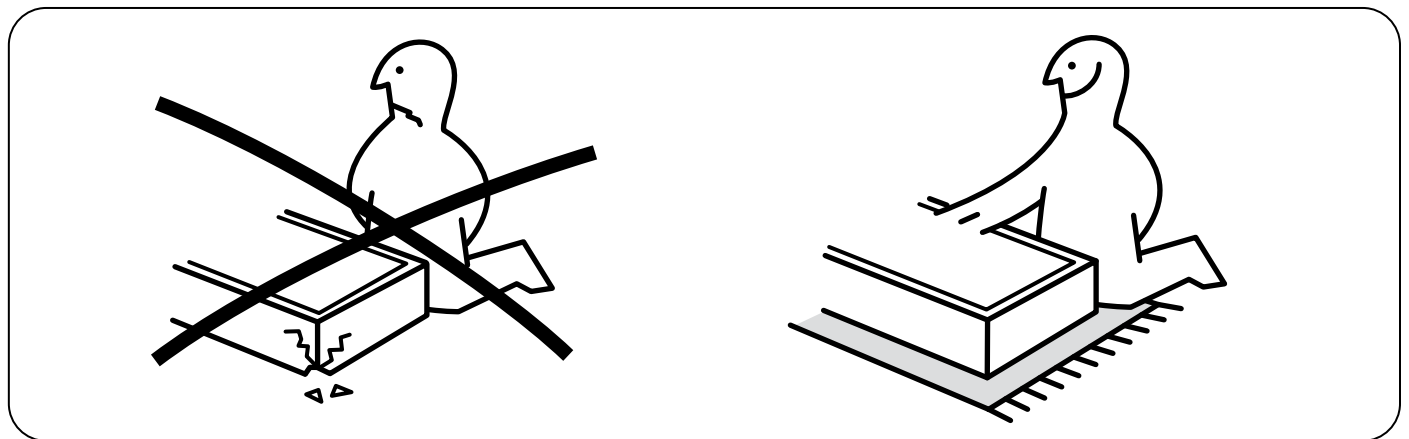
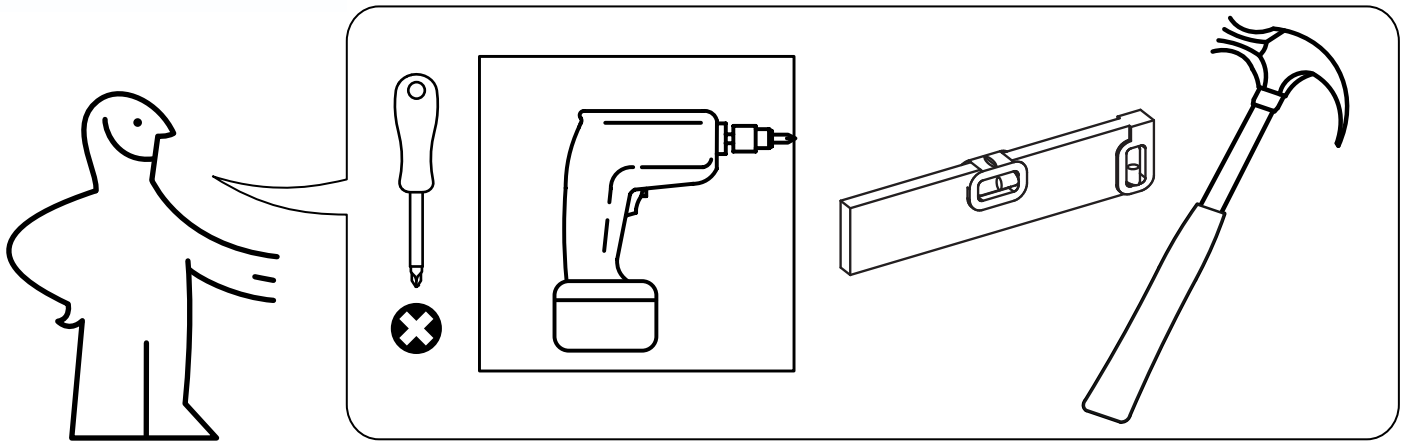
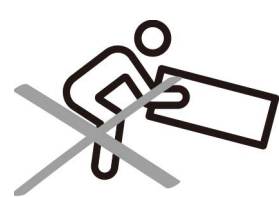


GP028-0052,1



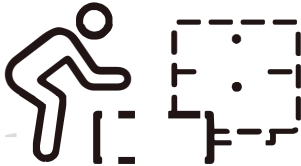
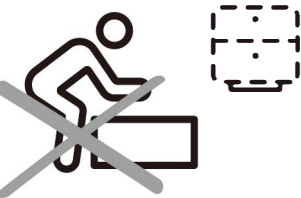
PRE ASSEMBLY INTRODUCTION

We understand building ready-to-assemble furniture can be a challenging experience for some. To help avoid confusion, we have provided some helpful tips that may speed up the process.



Teamwork

ALWAYS have at least two people to help with transporting and assembling the product to avoid potential injury and/or damage.



Suitable Location

Assembling near the area of the intended location is highly recommended.



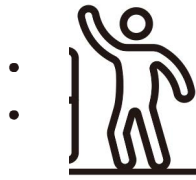
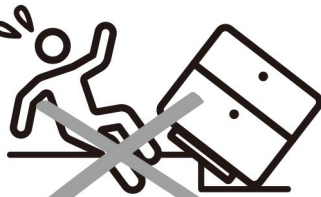
Sufficient Space

Make sure you have enough space to move around during the assembly.



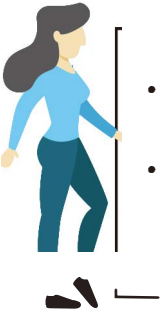
Avoid Scratches

Use cardboard, blankets or a carpeted area while assembling furniture to prevent scratches.

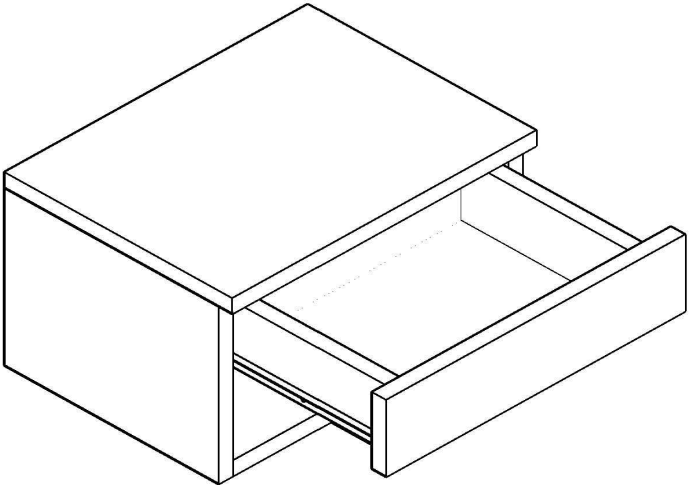
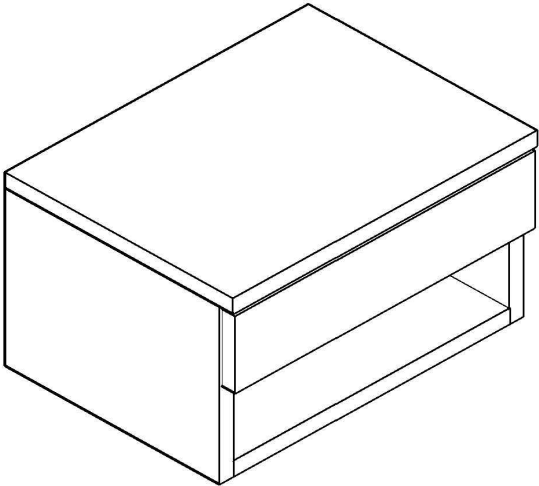


Flat Surface

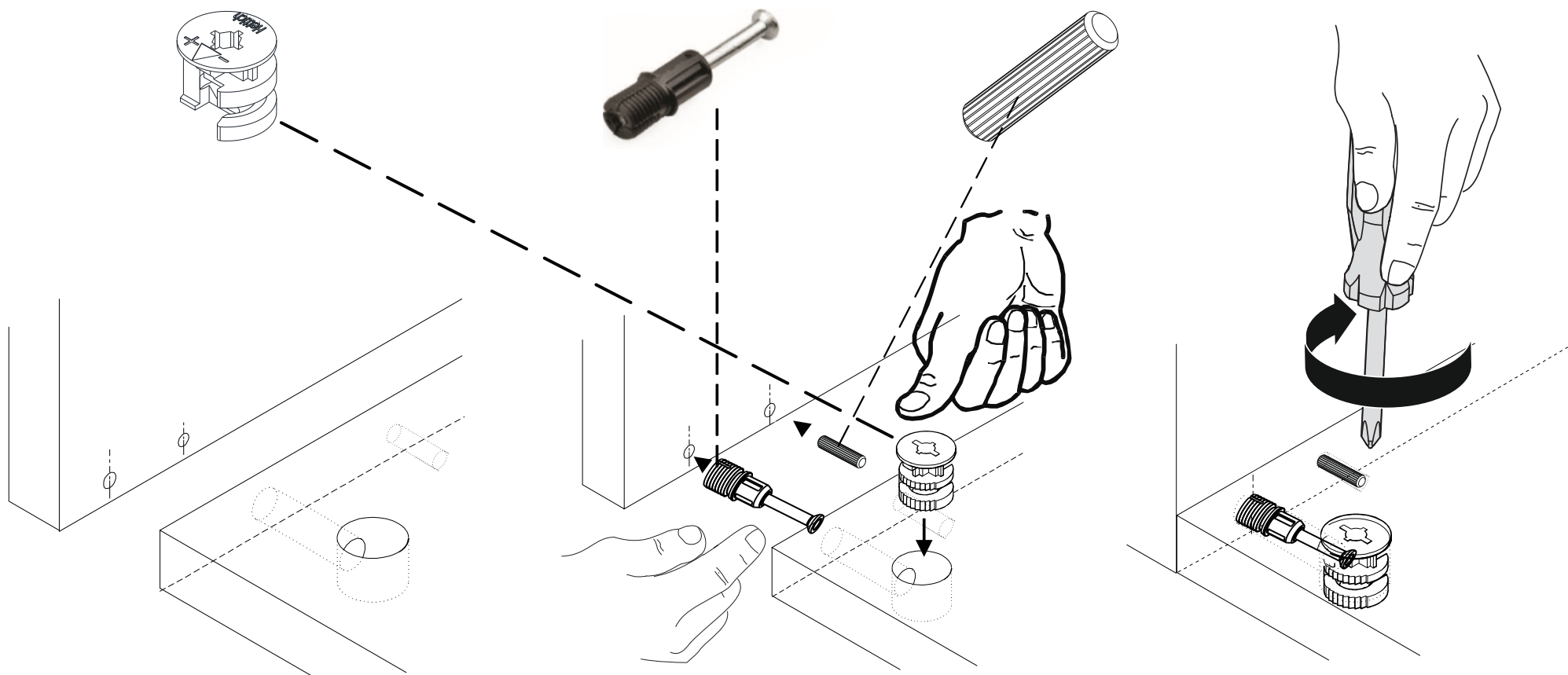
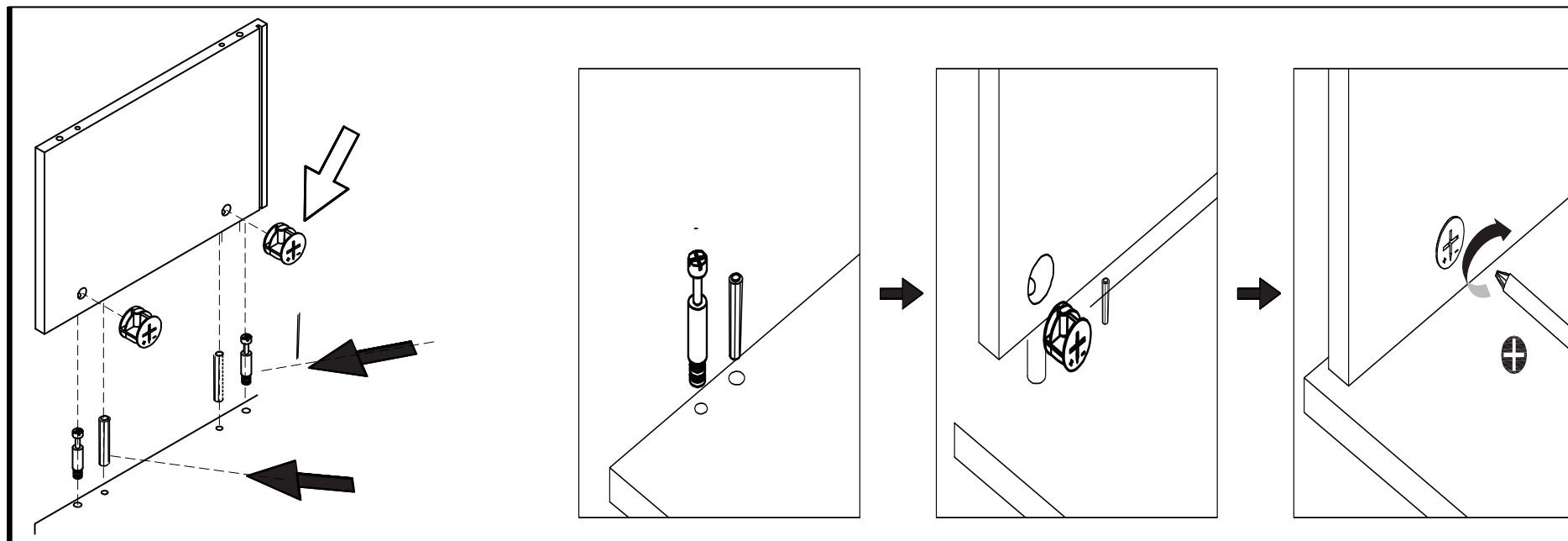
Make sure the furniture rests on a flat and level surface with each leg evenly touching the floor.



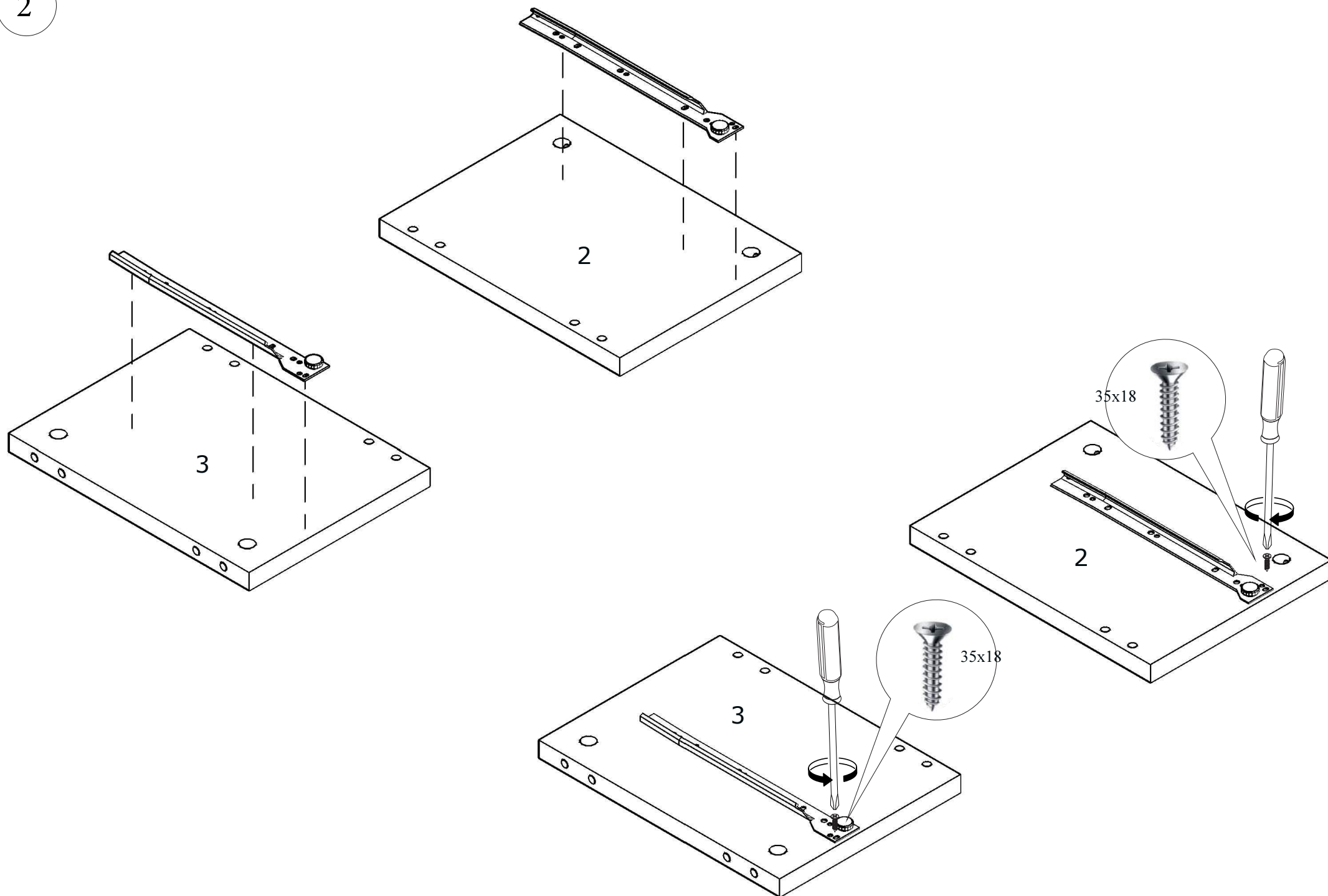
- Please keep instructions for future reference.
- Check the quantity and irregularity of parts and hardware before you start.



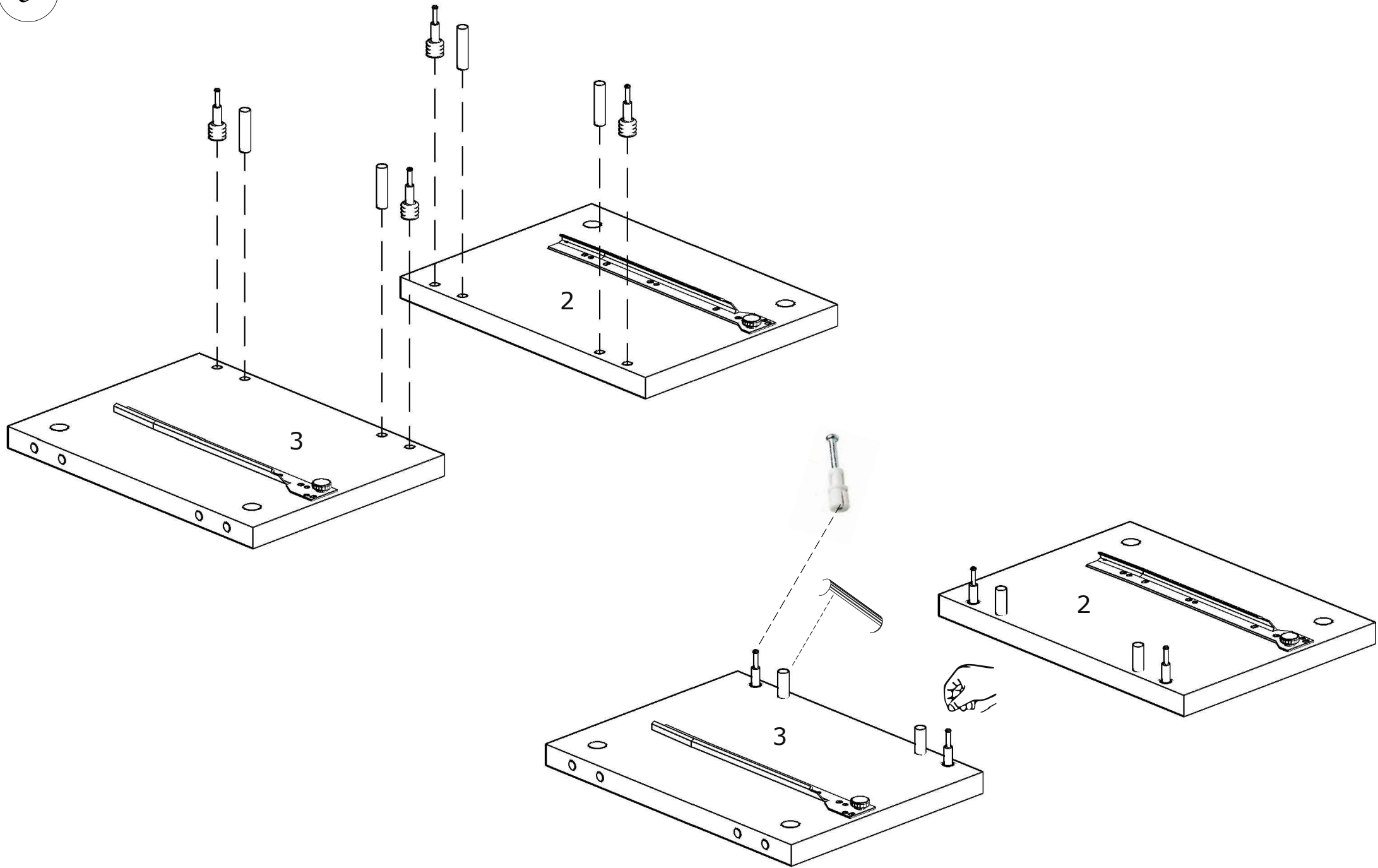
1



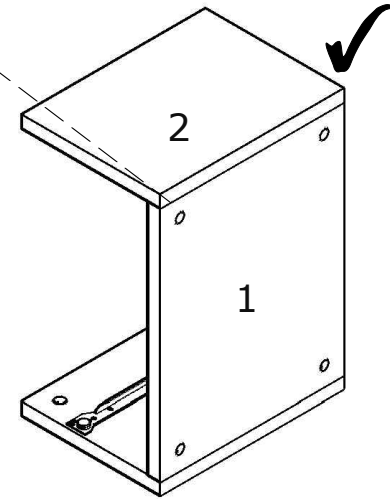
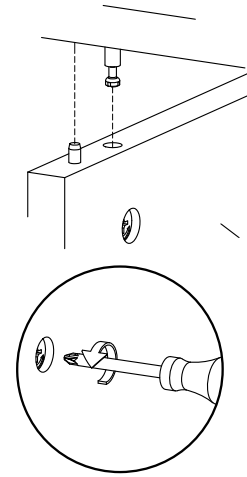
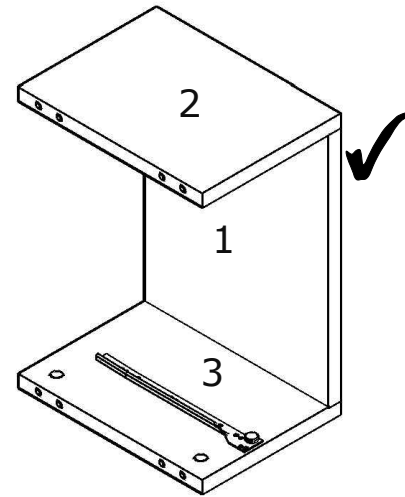
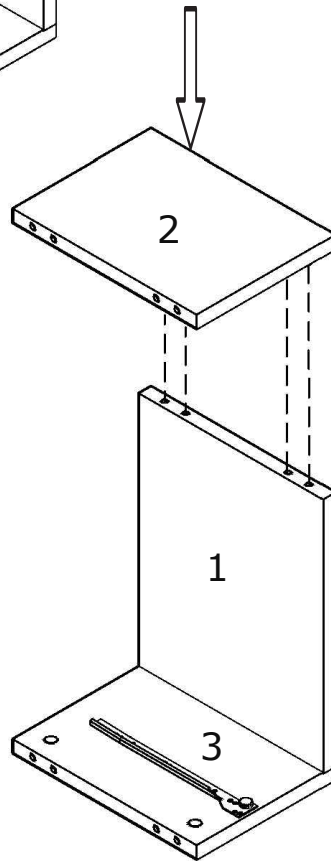
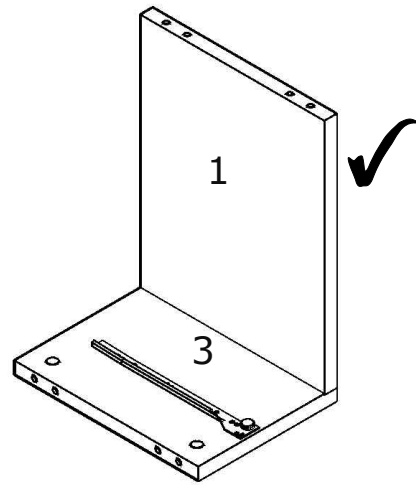
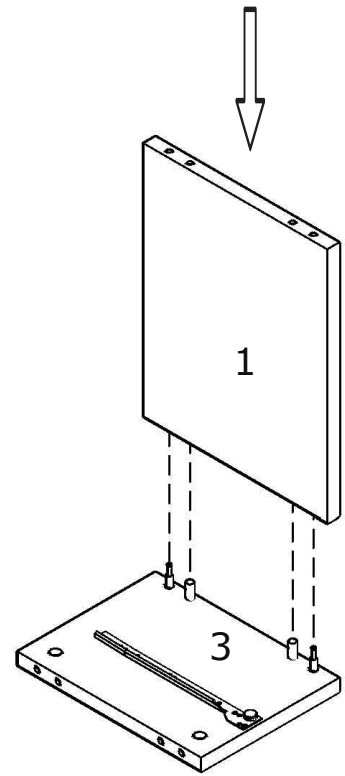
2



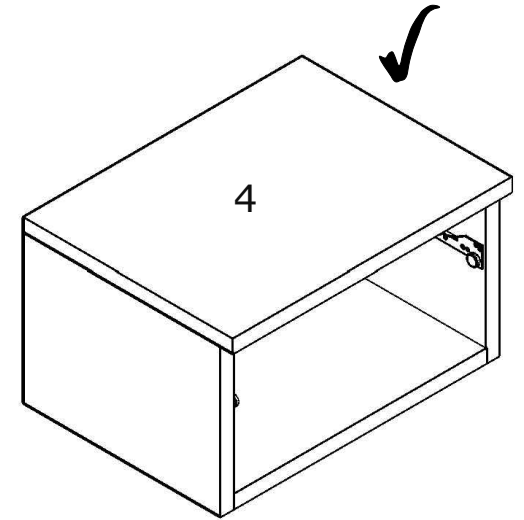
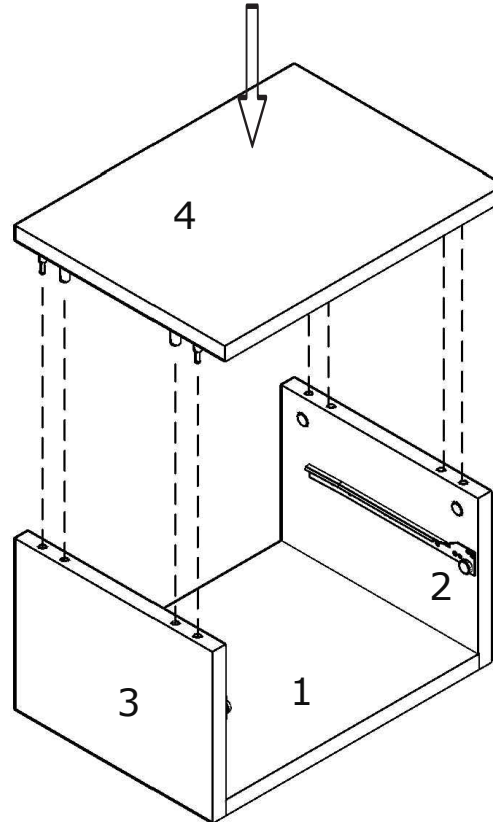
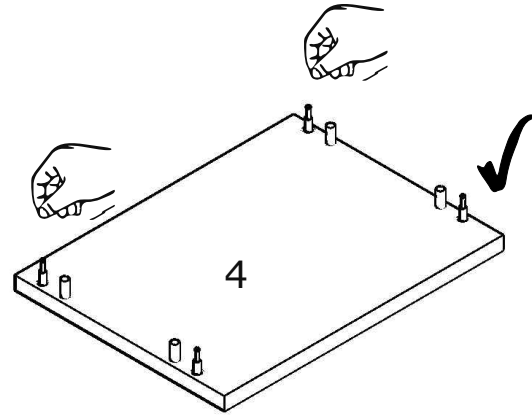
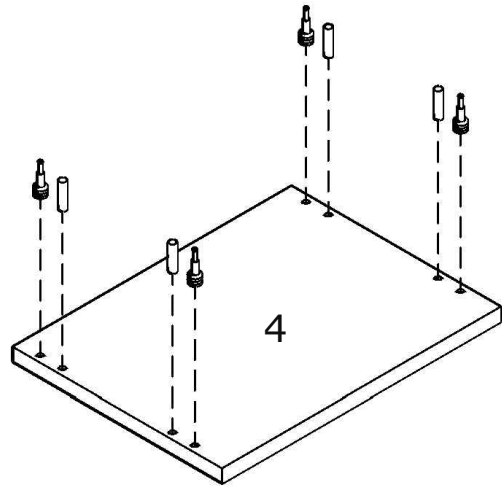
3

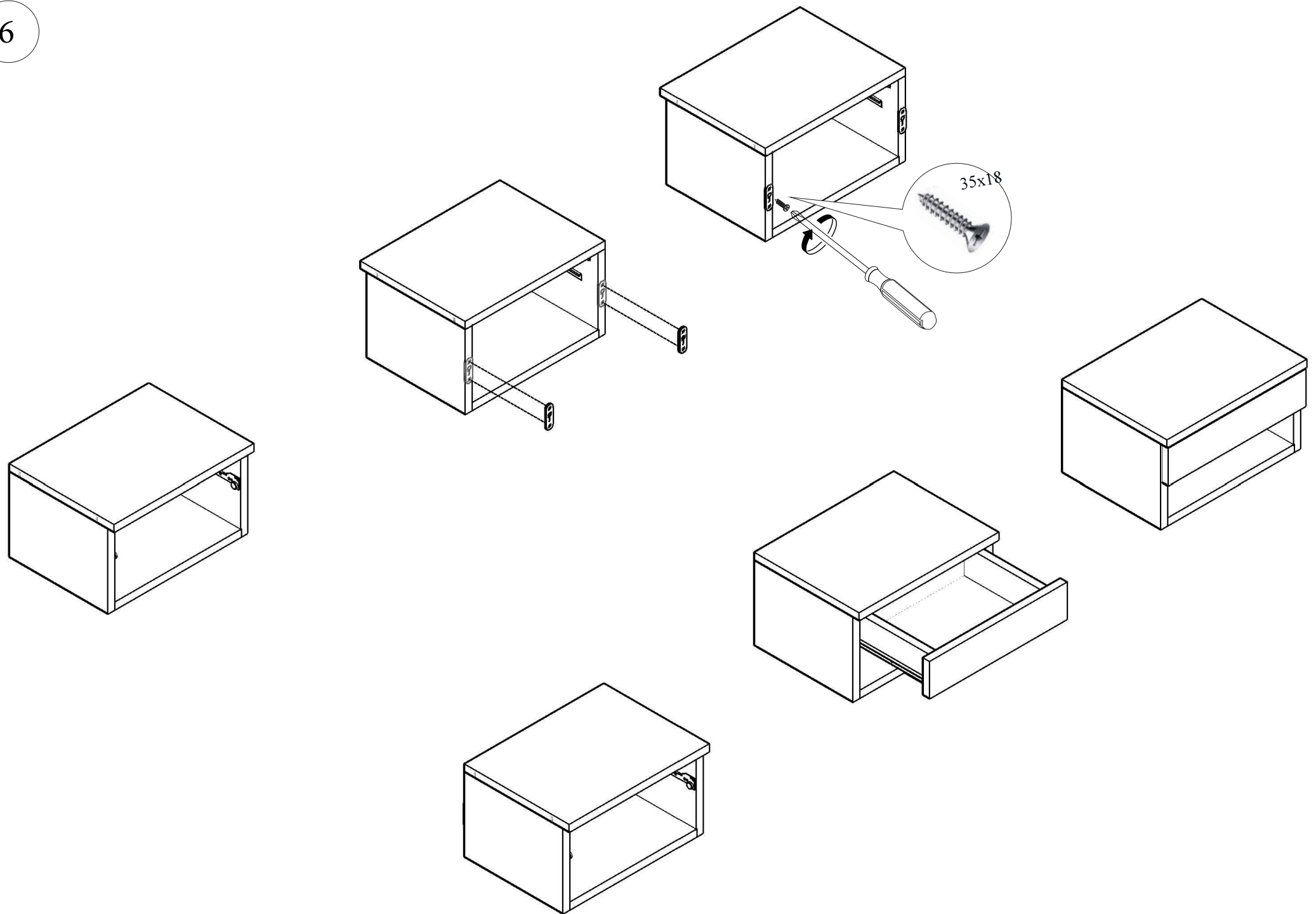


4



5





7

